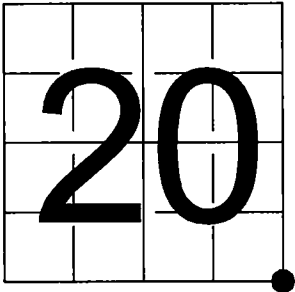


U.S. PUBLIC LAND SURVEY
MONUMENT RECORD

NOTE: This form is intended and designed to fulfill all requirements of Wisconsin Administrative Code, Chapter A-E 7.08 U.S. Public Land Survey Monument Record (3) (a-i)

A-E 7.08(3)(a) Identity of corner:
Southeast Corner Section 20,
Township 36 North, Range 12 East
of the Fourth Principal Meridian,
Town of Crandon, Forest County, Wisconsin

WISCRS - FOREST COUNTY
N: 574,442.019 USft (574,442.082)
E: 810,128.696 USft (810,128.729)
Datum: NAD83 (2011)
GNSS Method RTN
GNSS Control WISCRS VRS



The coordinate value shown has been verified by the average of two or more GPS observations at a markedly different time. Coordinates shown in parenthesis are 2021 measurement values.

A-E 7.08(3)(b)

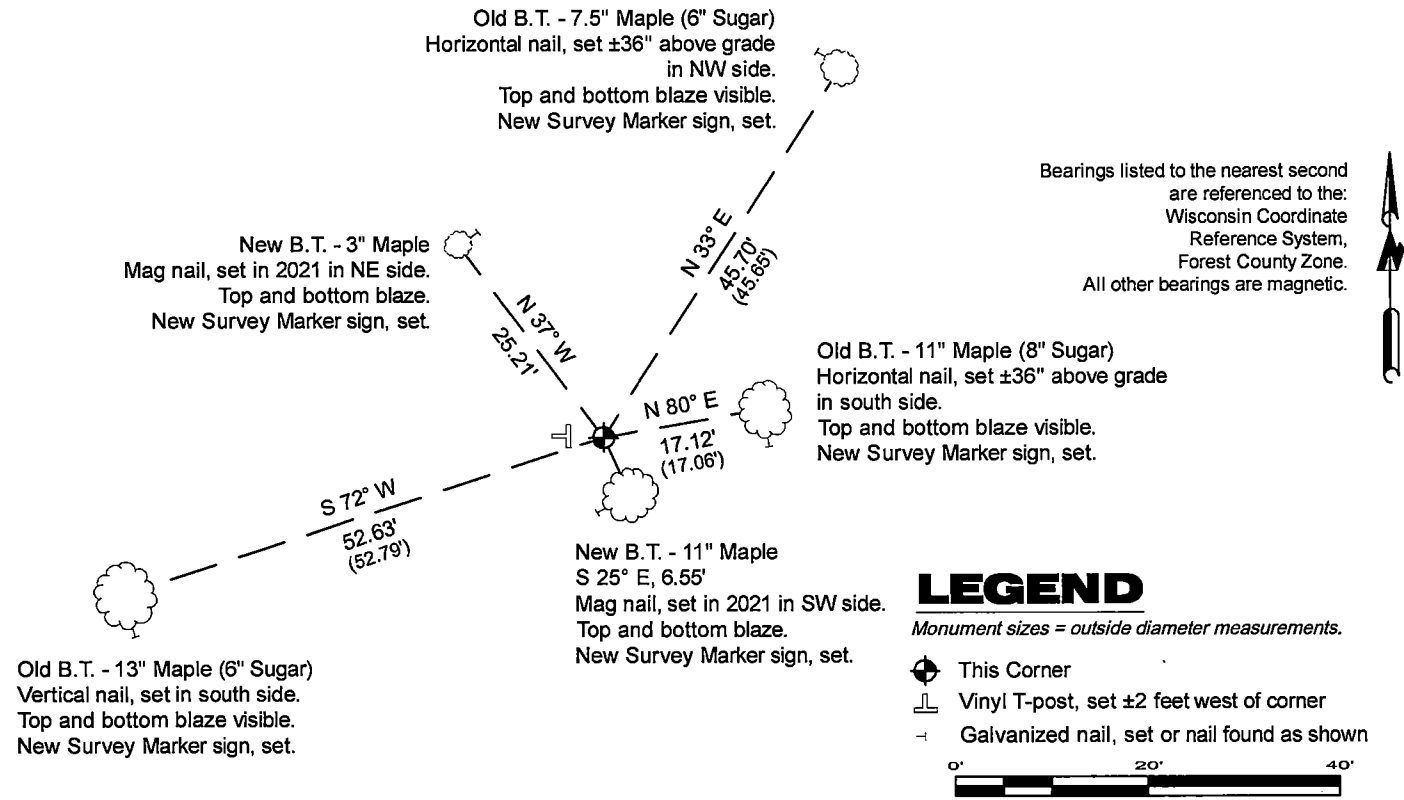
Original Surveyor: William E. Daugherty - August 4, 1859 to August 9, 1859
Hemlock 24 - N 40° E, 18 Links, Sugar 6 - S 18° W, 10 Links

See previous Certified Land Corner Restoration - R-9 - December 30, 1993 - Surveyor 1558 - Milo E. Stefan - THENCE:

- December 1, 1994 - Surveyor 1394 - Norman A. Harrison - county record Map #361229-19941201.
- April 18, 1997 - Surveyor 1731 - Kip W. Soder - county record Map #361221-19970418.
- May 13, 1997 - Surveyor 1731 - Kip W. Soder - county record Map #361228-19970513 & #361228-19970513A.
- September 22, 1998 - Surveyor 1754 - Robert O. Kamps - county record Map #361228-19980922.
- November 06, 2000 - Surveyor 1731 - Kip W. Soder - county record Map #361229-20001106.
- June 18, 2013 - Surveyor 1451 - Eugene C. Uttech - county record Map #361228-20130618.
- June 21, 2013 - Surveyor 1731 - Kip W. Soder - county record Map #361228-20130621.
- June 1, 2021 - Surveyor 2656 - Jeffrey L. DeMuth - county record Map #361229-20210601.
- June 20, 2024 - Surveyor 2263 - Wayne R. Reuter - county record Map #361228-20240620.

August 20, 2025 - I found a 2.4" diameter aluminum pipe monument with a 3.25" diameter aluminum cap stamped to identify the corner location. The monument is ±200 feet west of West Shore Lane, on high land at the intersection of an old rock wall / barbed wire fence heading north and west from the corner, and extends ±18" above grade. I also found 3 of Stefan's bearing trees alive and in good condition. I established 2 new reference monuments as shown below.

A-E 7.08(3)(c)(d) Plan view of corner with references to at least 4 witness monuments.



A-E 7.08(3)(e) 1859 Surveyor set a post, 1993 Surveyor set a 2" X 48" aluminum monument, subsequent Surveyors found the same, as did I in 2025.

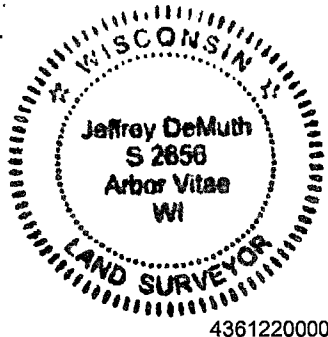
A-E 7.08(3)(f) I accept this monument in good faith as a FOUND PERPETUATED LOCATION of the corner.
A-E 7.08(3)(g)(h) This corner was not determined through lost-corner-proportionate methods.

A-E 7.08(3)(i) I, Jeffrey L. DeMuth, Professional Land Surveyor No. S-2656, hereby certify that the corner location on this record was determined by me or under my direction and control, and that this U.S. Public Land Survey Monument Record is correct and complete to the best of my knowledge, and belief.

SIGNATURE

August 21, 2025

DATE



4361220000

R9

DOCUMENT NUMBER
149578

FORM 985 M. C. MILLER CO., MILWAUKEE

State of Wisconsin }
County of Forest } ss.

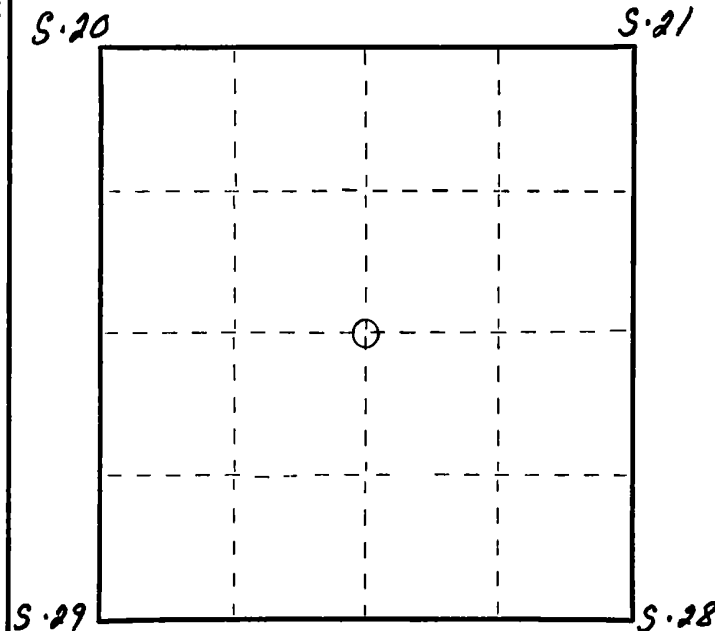
I Milo E. Stefan, do hereby
certify that on the 14th day
of December, 1993, I found
evidence of the Section
corner ~~88~~ to Sections 21, 20, 28 & 29
Township 36, North, Range
12 East, Fourth Principal Meridian,
as described hereon; and that from this evidence
I established a new monument and accessories
as described hereon to perpetuate the original
location of this corner.

Resident witnesses:

Myron Smith

Charles Blomdahl

Ted Golden (Local Resident)



○ = Corner monument restored.

CERTIFIED LAND CORNER RESTORATION

Index No. R-9

History of original corner establishment: By James L. Nowlan, 8/8/1859, at 80.00 Chains, set post
for Section Corner and two BTs:
24" Hemlock, N40°E, 18 Lks
6" Sugar, S18°W, 10 Lks

Description of corner evidence found:

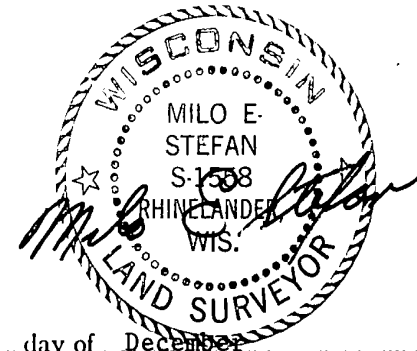
May 2, 1921 - I.R. Ritter's "Record of Survey" as filed with the Forest County Register
of Deeds indicates he found evidence of this corner and made two new BTs:
12" Sugar, N80°W, 25 Lks 12" Hemlock, S75°E, 28 Lks

12/14/1993 - Milo E. Stefan and crew found scribed Cedar Post and three iron pipes in
mound of stone - also pointed out to us by local resident that this was the Section
Corner.

Description of monument and accessories I established to perpetuate the original location of this corner.

We replaced iron pipes with a 2" x 48" aluminum monument in mound of stone and made four
new BTs as follows:

- 8" Sugar Maple, N80°E, 17.06 Feet
- 4" Sugar Maple, S15°E, 70.51 Feet
- 6" Sugar Maple, S72°W, 52.79 Feet
- 6" Sugar Maple, N33°E, 45.65 Feet



Dated at Rhineland, Wis., this 30th day of December, 1993.

Signature Milo E. Stefan Title Registered Land Surveyor Registration No. 1558
(County Surveyor, Registered Land Surveyor, or other duly authorized official)

Office of Register of Deeds, County of Forest, I hereby certify that the within
instrument was filed in this office for record on the 7th day of FEBRUARY, 1994
at 1:30 o'clock P. M.

Paul Hochendanner
(Register of Deeds)

By Deputy

43612 20 0000

c) Describe any material discrepancy between the location of the corner as restored or reestablished and the location of that corner as previously restored or reestablished by distance and direction. Show the discrepancy on the plan view drawing under (d), above. Show the distances between the corner as previously restored or reestablished and (1) the corner as restored or reestablished, and (2) to at least 2 of the witness monuments shown on the drawing in (d), above.

N/A

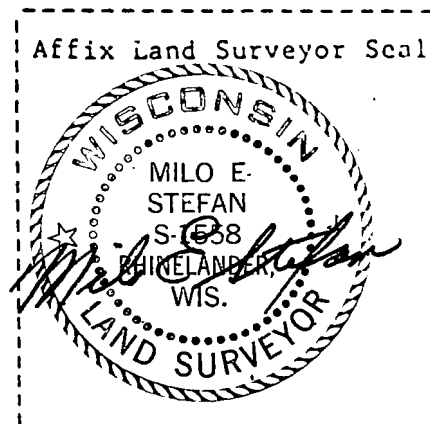
(f) Was the corner restored through acceptance of (1) an obliterated evidence location, or, (2) a found perpetuated location?

(2) a found perpetuated location

(g&h) Was the corner reestablished through lost corner proportionate methods? If so, show the method, including the directions and distances to other public land survey corners used as evidence or used for proportioning in determining the corner location?

N/A

(i) I, Milo E. Stefan
(type or print name) certify that the corner location shown on this record was determined by me or under my direction and control and that this U.S. Public Land Survey Monument Record is correct and complete to the best of my knowledge and belief.



Milo E. Stefan
Signature

12/30/93
Date