

U S PUBLIC LAND SURVEY MONUMENT RECORD

NOTE: This form is intended and designed to fulfill all requirements of Wisconsin Administrative Code, Chapter A-E 7.08 U.S. Public Land Survey Monument Record (3) (a-i)

A-E 7.08(3)(a) Identity of corner
SOUTHEAST CORNER OF SECTION 22
TOWNSHIP 36 NORTH
RANGE 12 EAST OF THE 4TH PM
TOWN OF CRANDON
COUNTY OF FOREST

WISCRS - FOREST COUNTY
N: 574,540.574 USft
E: 820,990.224 USft
Datum: NAD83 (2011)
GNSS Method RTN - Direct
GNSS Control WISCORS VRS



The coordinate value shown has been verified by the average of two or more GPS observations at a markedly different time.

A-E 7.08(3)(b) Description of any record evidence, monument evidence, occupational evidence, testimonial evidence, or any other material evidence.

Original Surveyor: William E. Daugherty

Date of Original Survey Commenced: August 4, 1859
 Completed: August 9, 1859

Original Accessories:

Hemlock 10 N 51° E 40
Birch 14 S 22° W 14

See Previous Monument Record:
Index No. R-17
Document No. 172368

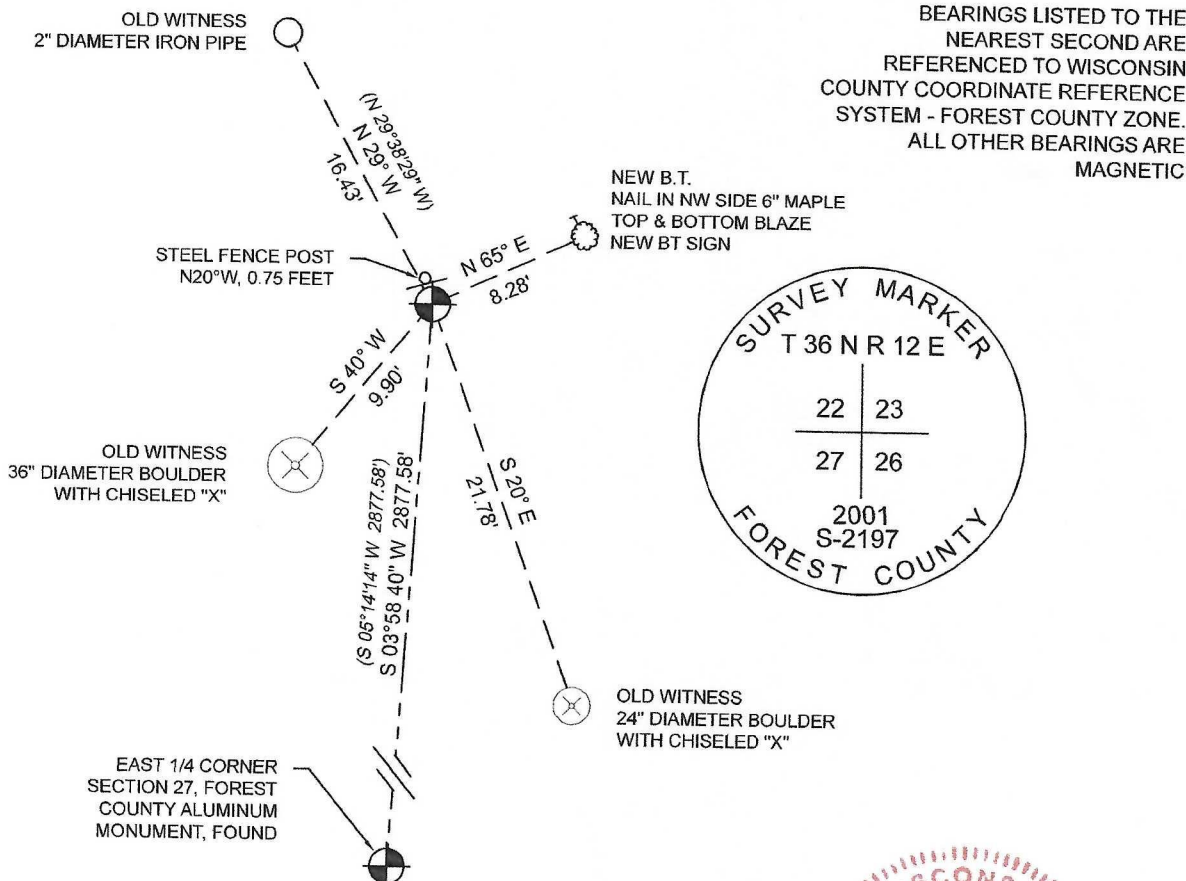
July 23, 2001 - Surveyor 2197 - Michael A. Trembl - Found witnesses and remains of wooden stake at corner location. Trembl set a stamped Forest County aluminum monument.

A-E 7.08(3)(f) The corner is a found perpetuated location.

September 13, 2021 - I found a 2 1/2" diameter aluminum pipe with a 3 1/4" diameter aluminum capped Forest County aluminum monument stamped to identify the corner. I also found 3 witness monuments intact, and established 1 new witness as shown below.

A-E 7.08(3)(c)(d)(e)(h) Plan view of corner with references to at least 4 witness monuments. If in disagreement with previously established corner, show the distances between the two corners and also indicate the ties to the disputed. The directions and distances to other public land survey corners used as evidence or used for determining the corner location.

() = PREVIOUSLY RECORDED AS

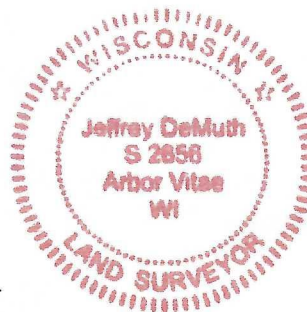


A-E 7.08(3)(i) I, Jeffrey L. DeMuth, Professional Land Surveyor No. S-2656, hereby certify that the corner location on this record was determined by me or under my direction and control and that this U.S. Public Land Survey Monument Record is correct and complete to the best of my knowledge, and belief

SIGNATURE

February 2, 2022

DATE



43612220000

Document Number
172368

REGISTER'S OFFICE
Forest County, Wis.
Received for record this 24th day
of July A.D., 2001 at
9:00 o'clock A.M. and recorded
in Vol. Corner Restoration
page R-17

Kay Swanson, Deputy
Register of Deeds

U.S. PUBLIC LAND SURVEY MONUMENT RECORD

(As Required by WI Adm. Code)

History of original corner establishment and subsequent restorations and descriptions of any record, monument, occupational, testimonial or other evidence considered:

1859 - William Daugherty, set original corner post and made the following B.T.'s:

Hemlock, 10", N 51° E, 40 lks.
Birch, 14", S 22° W, 14 lks.

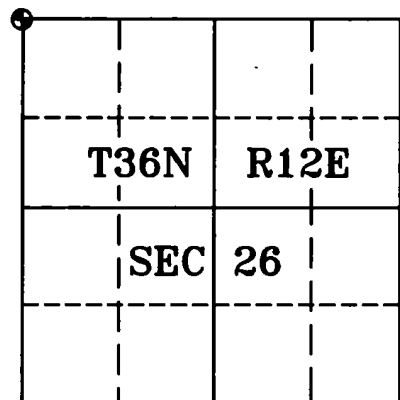
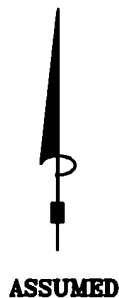
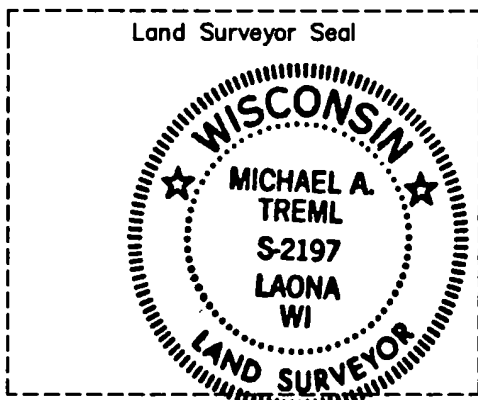
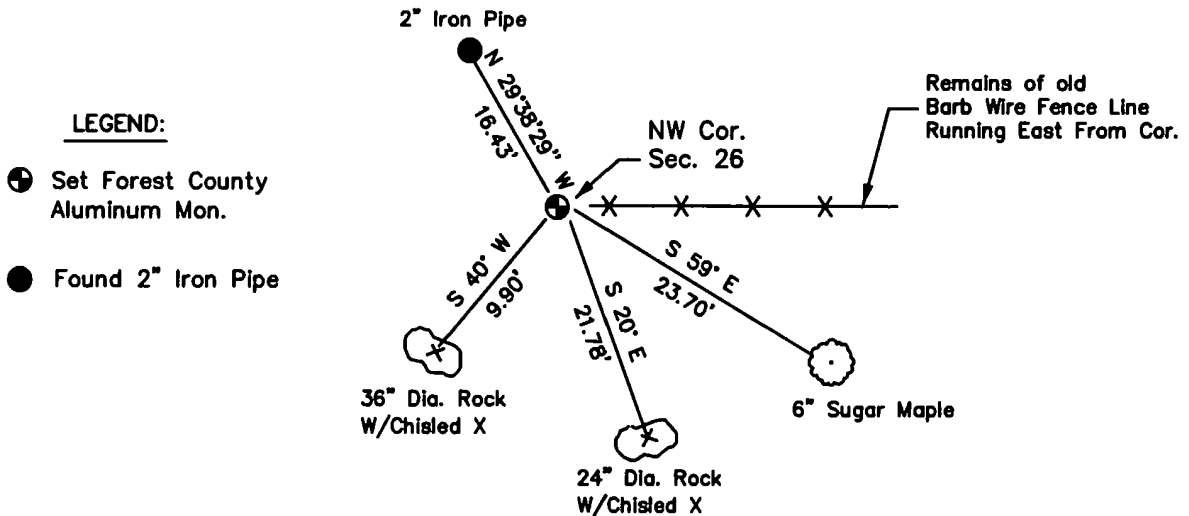
1921 - I. R. Ritter, Forest County Surveyor, set a wooden stake at the Section Corner position.
He also references this corner by bearing and distance from two Rocks as follows:
Rock 36" Dia., S 40° W, 15 links, 9.90' & Rock 24" Dia., S 20° E, 33 links, 21.78'

2001 - I found the two rocks mentioned above, they were the only exposed rocks in the vicinity.
Measuring the record distance and bearing from the rocks I dug down 14" and recovered
remains of the wooden stake set by Ritter.
I then set a stamped Forest County Aluminum Monument at this found corner position.

Corner was: (Check All That Apply)

- ☒ Restored through acceptance of an obliterated evidence location.
☒ Restored through acceptance of a found perpetuated location.
☐ Considered a lost corner and reestablished through lost corner proportionate methods (include a plan view drawing showing distances and directions to other Public Land Survey Corners used for proportioning and determining the corner location).
☐ Restored or reestablished in a location that differs from a previous restoration or reestablishment (include a plan view drawing and indicate what was set and/or found).

Describe the monument and accessories used to perpetuate the location of this corner (include a plan view drawing and indicate what was set and/or found).



I, Michael A. Tremel, RLS
(type or print name) certify that the corner location shown on
this record was determined by me or under my direction and
control and that this U.S. Public Land Survey Monument Record
is correct and complete to the best of my knowledge and belief.

Michael A. Tremel 7-23-01
Signature Date

The Northwest corner of
Section 26 T. 36 N., R. 12 E.
Forest County, WI

Index No. R-17

43612220000

R-17