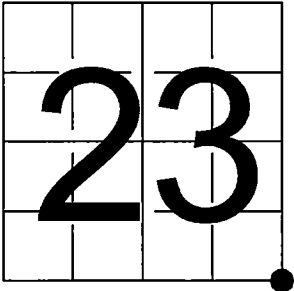


U.S. PUBLIC LAND SURVEY  
MONUMENT RECORD - ADDENDUM

NOTE: This form is intended and designed to fulfill all requirements of Wisconsin Administrative Code,  
Chapter A-E 7.08 U.S. Public Land Survey Monument Record (3) (a-i)

A-E 7.08(3)(a) Identity of corner:  
Southeast Corner Section 23,  
Township 36 North, Range 12 East  
of the Fourth Principal Meridian,  
Town of Crandon Forest County, Wisconsin

WISCRS - FOREST COUNTY  
N: 574,418.022 USft (XXX,XXX.XXX)  
E: 826,214.357 USft (XXX,XXX.XXX)  
Datum: NAD83 (2011)  
GNSS Method RTK  
GNSS Control WISCORS VRS



The coordinate value shown has been verified by the average of two or more GPS observations  
at a markedly different time. Coordinates shown in parenthesis are previously published values.

A-E 7.08(3)(b)

Original Surveyor: William E. Daugherty - August 4, 1859 to August 9, 1859  
Fir 6 - N 58° W, 21 Links, Hemlock 8 - N 58° W, 15 Links

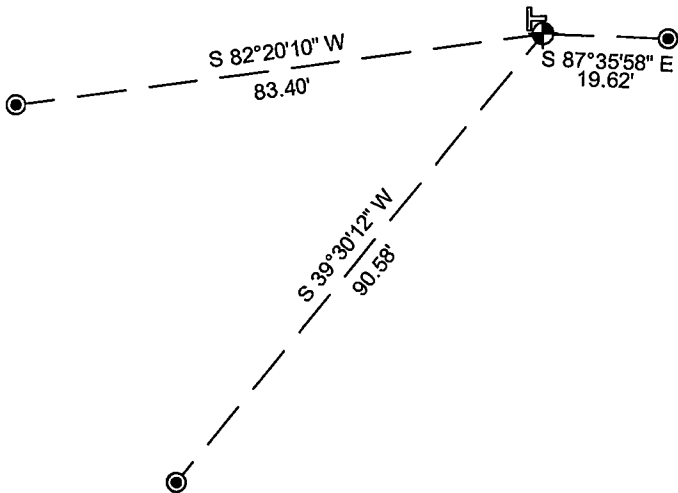
See previous Certified Land Corner Restoration - R21 - January 28, 1980 - Surveyor 887 - Thomas R. Arnott - THENCE:

- August 17, 2000 - Surveyor 1731 - Kip W. Soder - indicates this position as "1 1/4" dia. iron pipe found" on county record Map #361226-20000817.
- May 7, 2003 - Surveyor 1795 - Devon Vanden Heuvel - indicates this position as "1 1/4" iron pipe found" on county record Map #361225-20030307 & #361225-20030507A.
- November 19, 2009 - Surveyor 2656 - Jeffrey L. DeMuth - indicates this position as "3/4" IR set from CSM 115367" on county record Map #361224-20091119.
- September 13, 2013 - Surveyor 1763 - Thomas A. Boettcher - indicates this position as "1" iron pipe found" on county record Map #361226-20130930 & #361226-20170504.
- April 10, 2018 - Surveyor 1731 - Kip W. Soder - indicates this position as "1" dia. iron pipe found" on Certified Survey Map 225070.

April 9, 2025 I found a 1" diameter iron rod in concrete. The monument is in a open parking area of the the Crandon International Off Road Raceway. There is a Vinyl T-Post along the northwest edge of the monument. No reference monuments were found. This monument disagrees with all monuments cited above, but it's location matches that of Kip Soder's from his 2018 C.S.M. (distance from section corner, west to a computed position on the section line, north of the northwest corner of Lot 1 - recorded as 1935.91' measured 1935.75'). As there is no other evidence available, I accept this monument to be the section corner.  
I established 3 new reference monuments as shown below.

A-E 7.08(3)(c)(d) Plan view of corner with references to at least 4 witness monuments.

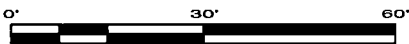
Bearings listed to the nearest second  
are referenced to the:  
Wisconsin County Coordinate  
Reference System,  
Forest County Zone.  
All other bearings are magnetic.



LEGEND

Monument sizes = outside diameter measurements.

- ⊕ This Corner
- ⌚ Vinyl T-post, found at NW edge of monument
- 0.75" diameter X 18" long iron rod, set

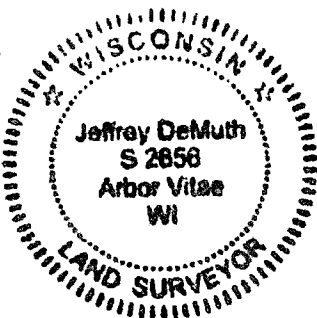


A-E 7.08(3)(e) 1859 Surveyor set a post, 1980 Surveyor set a 1 1/4" iron pipe, subsequent surveyors found a similar monument (with the exception of 2009, where I said I set a 3/4" IR). In 2025, I found 1" diameter iron rod in concrete.

A-E 7.08(3)(f) I accept this monument in good faith as a FOUND PERPETUATED LOCATION of the corner.

A-E 7.08(3)(g)(h) This corner was not determined through lost-corner-proportionate methods.

A-E 7.08(3)(i) I, Jeffrey L. DeMuth, Professional Land Surveyor No. S-2656, hereby certify that the corner location on this record was determined by me or under my direction and control, and that this U.S. Public Land Survey Monument Record is correct and complete to the best of my knowledge, and belief.



SIGNATURE

April 10, 2025

DATE

43612230000

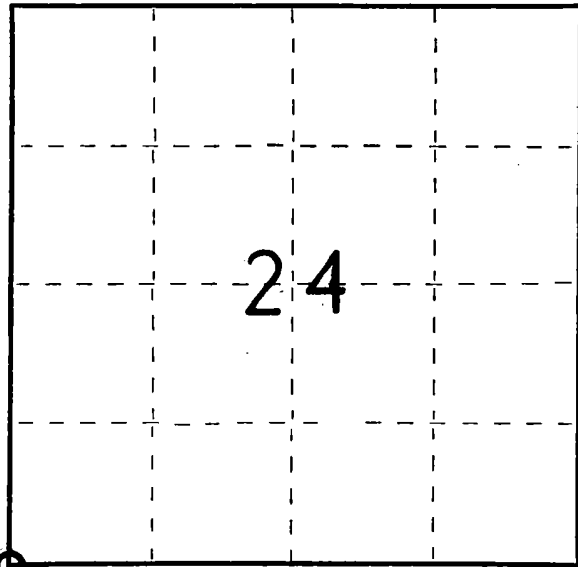
43612230000

R21

State of Wisconsin }  
County of Forest } ss.

I Thomas R. Arnott, do hereby  
certify that on the 20th day  
of June, 1978, I found  
evidence of the section  
corner of sec. 23, 24, 25, 26  
Township 36, North, Range  
12 E, Fourth Principal Meridian,  
as described hereon; and that from this evidence  
I established a new monument and accessories  
as described hereon to perpetuate the original  
location of this corner.

Resident witnesses:



○ = Corner monument restored.

CERTIFIED LAND CORNER RESTORATION

Index No. R21

History of original corner establishment:

Original subdivision by William Daugherty 4 Aug. - 9 Aug. 1859

Fir 6 N58W 21 Lks.  
Hemlock 8 S16E 15 Lks.

Description of corner evidence found:

Remonumented by Ritter 21 June - 28 June, 1921

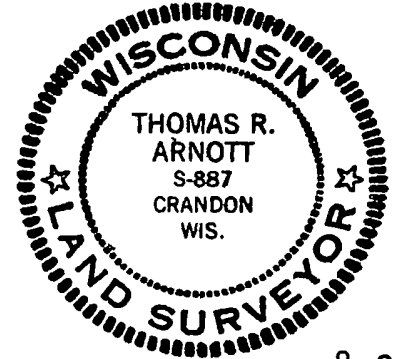
Birch 24 S35E 158 Lks (found)  
Hemlock 8 S70W 139 Lks

Description of monument and accessories I established to perpetuate the original location of this corner.

Set 1 1/4 " iron pipe from birch stump found

Ties:

Forest County Aluminum Monument S4E 19.42 feet  
Maple 8 N50E 39.27 feet



Dated at Crandon, Wis., this 28th day of January, 1980

Signature Thomas R. Arnott Title Surveyor Registration No. S-887  
(County Surveyor, Registered Land Surveyor, or other duly authorized official)

Office of Register of Deeds, County of Forest, I hereby certify that the within  
instrument was filed in this office for record on the 29th day of January, 1980  
at 10:30 o'clock AM M.

Eugene Stutzman  
(Register of Deeds)

Document Number **117462**

By \_\_\_\_\_ Deputy

43612230000