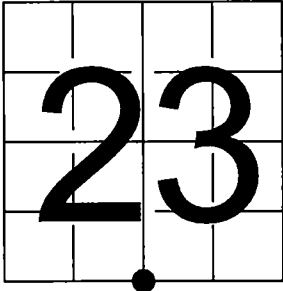


U.S. PUBLIC LAND SURVEY
MONUMENT RECORD - ADDENDUM

NOTE: This form is intended and designed to fulfill all requirements of Wisconsin Administrative Code, Chapter A-E 7.08 U.S. Public Land Survey Monument Record (3) (a-i)

A-E 7.08(3)(a) Identity of corner:
South 1/4 Corner Section 23,
Township 36 North, Range 12 East
of the Fourth Principal Meridian,
Town of Crandon Forest County, Wisconsin

WISCRS - FOREST COUNTY
N: 574,525.859 USft (XXX,XXX.XXX)
E: 823,591.052 USft (XXX,XXX.XXX)
Datum: NAD83 (2011)
GNSS Method RTK
GNSS Control WISCORS VRS



The coordinate value shown has been verified by the average of two or more GPS observations at a markedly different time. Coordinates shown in parenthesis are previously published values.

A-E 7.08(3)(b)

Original Surveyor: William E. Daugherty - August 4, 1859 to August 9, 1859
Hemlock 10 - N 59° W, 21 Links, Birch 12 - S 17° E, 25 Links

See previous Certified Land Corner Restoration - R19 - December 16, 1975 - Surveyor 887 - Thomas R. Arnett - THENCE:

- August 17, 2000 - Surveyor 1731 - Kip W. Soder - indicates this position as "P.K. nail found" on county record Map #361226-20000817.
- July 30, 2001 - Surveyor 2197 - Michael A. Tremel - indicates this position as "iron monument / record monument" on county record Map #361226-20010730.
- June 11, 2007 - Surveyor 1451 - Eugene C. Uttech - indicates this position as "1 1/2" dia. I.P. found" on county record Map #361223-20070611.
- September 13, 2013 - Surveyor 1763 - Thomas A. Boettcher - indicates this position as "steel survey pin set over 1" iron pipe found under pavement" on county record Map #361226-20130930 & #361226-20170504.
- September 30, 2015 - Surveyor 1234 - James D. Rein - indicates this position as "1 dia. survey nail set using WI DOT reference monuments" on county record Map #361223-20150930.
- April 10, 2018 - Surveyor 1731 - Kip W. Soder - indicates this position as "steel survey pin found" on Certified Survey Map 225070.

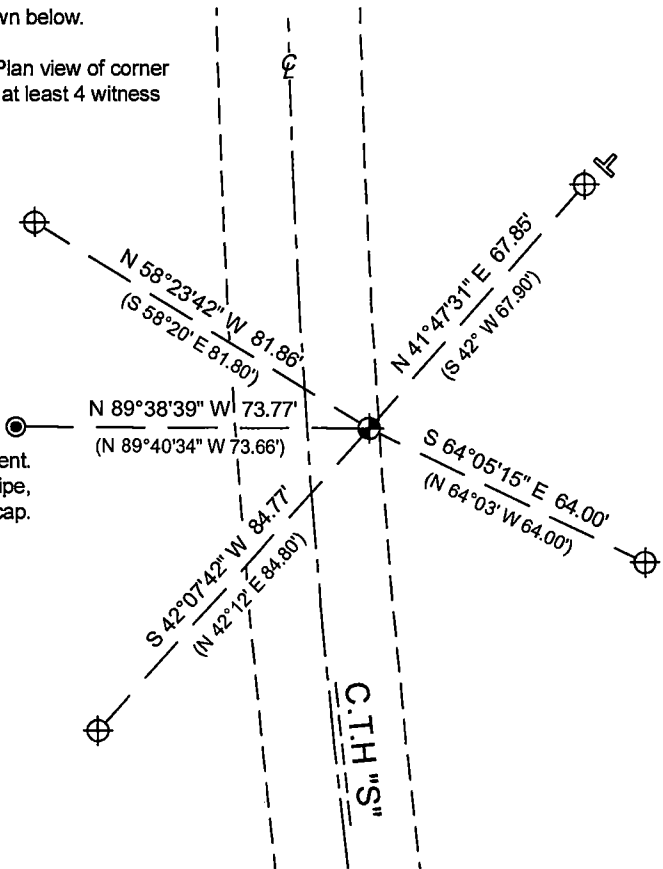
April 9, 2025 I found a 1" diameter Survey Mark spike ±13' east of the County Trunk Highway "S" centerline and near the east edge of pavement. I also found 4 WisDOT reference monuments. Each of the WisDOT monuments had a distance and direction to the section corner stamped on the cap, which matched the location of the Survey Mark spike.

I also found a " diameter Survey Mark spike of unknown origin, N45°45' W, 1.73 feet from the section corner.

I established 1 new reference monument as shown below.

A-E 7.08(3)(c)(d) Plan view of corner with references to at least 4 witness monuments.

New reference monument.
1" diameter iron pipe,
with yellow Wilderness cap.

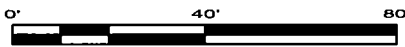


Bearings listed to the nearest second
are referenced to the:
Wisconsin County Coordinate
Reference System,
Forest County Zone.
All other bearings are magnetic.

LEGEND

Monument sizes = outside diameter measurements.

- ⊕ This Corner
- ⊥ Vinyl T-post, set ±1 NE of reference monument.
- ⊕ WisDOT - 4" diameter cast aluminum monument, found



A-E 7.08(3)(e) 1859 Surveyor set a post, 1975 Surveyor found a 1 1/2" iron pipe and replaced it with a Forest Co. aluminum monument. No subsequent surveyors found an aluminum monument. 2015 Surveyor set a 1" dia. survey nail, 2018 Surveyor found the same, as did I in 2025.

A-E 7.08(3)(f) I accept this monument in good faith as a FOUND PERPETUATED LOCATION of the corner.

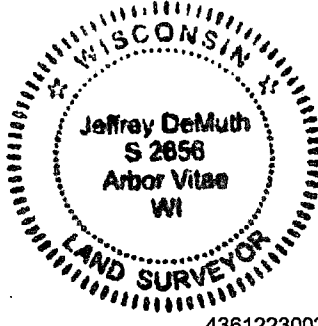
A-E 7.08(3)(g)(h) This corner was not determined through lost-corner-proportionate methods.

A-E 7.08(3)(i) I, Jeffrey L. DeMuth, Professional Land Surveyor No. S-2656, hereby certify that the corner location on this record was determined by me or under my direction and control, and that this U.S. Public Land Survey Monument Record is correct and complete to the best of my knowledge, and belief.

SIGNATURE

April 10, 2025

DATE



43612230020

43612230020

R19

State of Wisconsin }
County of Forest } ss.

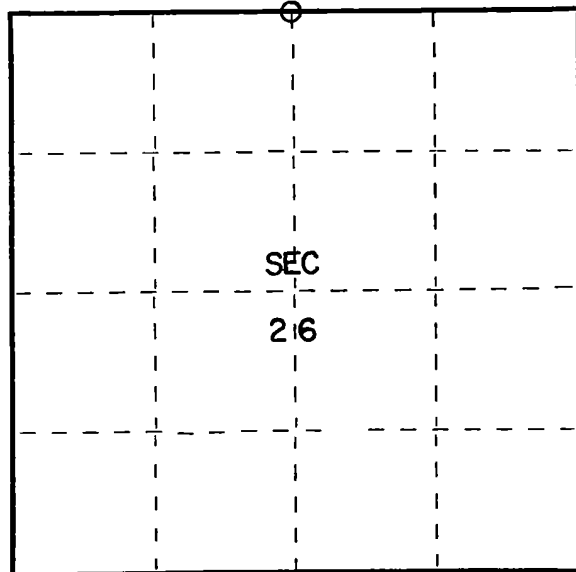
I, Thomas R. Arnott, do hereby
certify that on the 15th day
of December, 19 75, I found
evidence of the 1/4
corner of sections 23 & 26
Township 36, North, Range
12 E, Fourth Principal Meridian,
as described hereon; and that from this evidence
I established a new monument and accessories
as described hereon to perpetuate the original
location of this corner.

Resident witnesses:

.....

.....

.....



○ = Corner monument restored.

CERTIFIED LAND CORNER RESTORATION

Index No. R19

History of original corner establishment:

Original Survey by William Daugherty Aug. 4, - Aug. 9, 1859

Hemlock	10	N59W	21 Lks.
Birch	12	S17E	25 Lks.

Description of corner evidence found:

Found 1 1/2" iron pipe



Description of monument and accessories I established to perpetuate the original location of this corner.

Replaced iron pipe with a new Forest County aluminum monument

Ties:

Maple	8	N15W	60.26 feet
Maple	8	S60W	27.61 feet

Dated at Crandon, Wis., this 16th day of December, 19 75.

Signature Thomas R. Arnott Title Land Surveyor Registration No. S-887
(County Surveyor, Registered Land Surveyor, or other duly authorized official)

Office of Register of Deeds, County of Forest, I hereby certify that the within
instrument was filed in this office for record on the 16th day of December, 19 75
at 11 o'clock A. M.

Engine Stagny Document Number
(Register of Deeds)

By _____ Deputy

108401

43612230020