

**!Attention!**

This PLSS corner is in the process of being updated by Forest County. An updated Tie Sheet will be available for this corner soon.

Please contact Kayla at the Forest County Land Information Department for more information.

Contact Info:

715-478-1387 or [Kayla.L@co.forest.wi.us](mailto:Kayla.L@co.forest.wi.us)

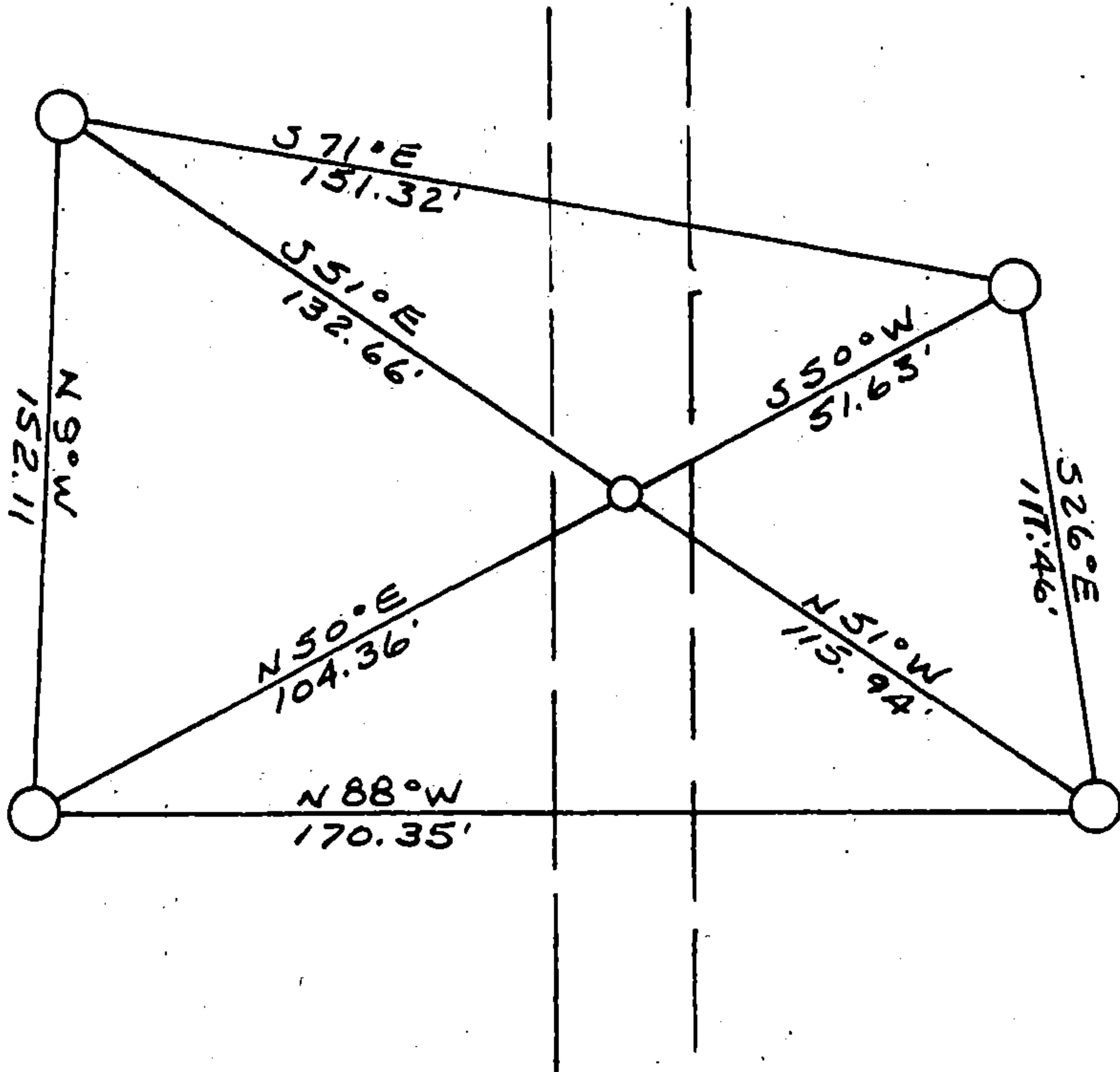
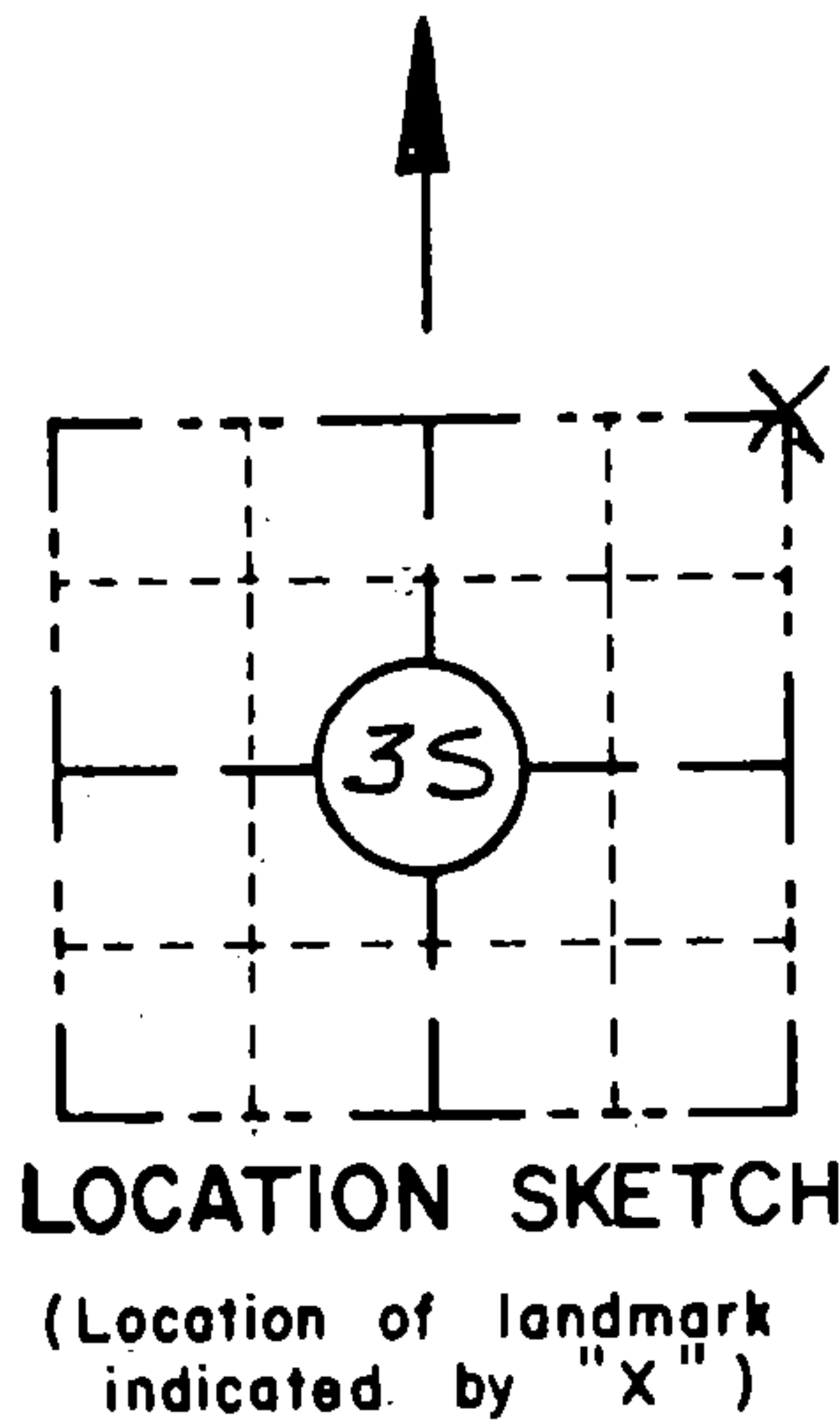
ORIGINAL ON FILE IN CO CLERK'S OFFICE  
COPY HERE FOR REFERENCE

RECORD AND CERTIFICATION OF U.S.  
PUBLIC LAND SURVEY CONTROL STATION  
E-D-716-72

State of Wisconsin / Department of Transportation

District 7	Project I. D. 9339-06-70	Located by R.B. JOHNSON - SURVEY CREW CHIEF			
Corner N.E. COR. 35 SECTION	Township 36 N	Range (E,W) 12 E	County FOREST		
Wisconsin Coordinates CORNER N/A	East (X)	North (Y)	Elevation (Z)	Zone	
Control Station Name	East (X)	North (Y)	Elevation (Z)	Zone	
Horizontal — NORTH AMERICAN, 1927		CONTROL DATUM Vertical — MEAN SEA LEVEL, 1929 ADJUSTMENT			
Horizontal — _____ Order		SURVEY CONTROL Vertical — _____ Order			

SKETCH



I hereby certify that on the 4<sup>TH</sup> day of MAY 1993, that I did locate the above corner which was evidenced by R.R. SPIKE

\_\_\_\_\_ ; I further certify that to perpetuate the location of such corner I did, at the exact location thereof, place a permanent marker consisting of NONE

\_\_\_\_\_ ; I further certify that I did establish 4 references or witness monuments consisting of 5/8" X 24" RE-BARS WITH RED PLASTIC WDOT CAPS

\_\_\_\_\_ located as shown above:

SEAL

Signature Registered Land Surveyor	Registration No. S--	Title
------------------------------------	-------------------------	-------

CORNER  
N.E. COR.  
SECTION  
35  
TOWN  
36 N  
RANGE  
12 E

43612260000

CERTIFIED LAND CORNER RESTORATION

Index No. V-21

State of Wisconsin }  
County of Forest } ss.

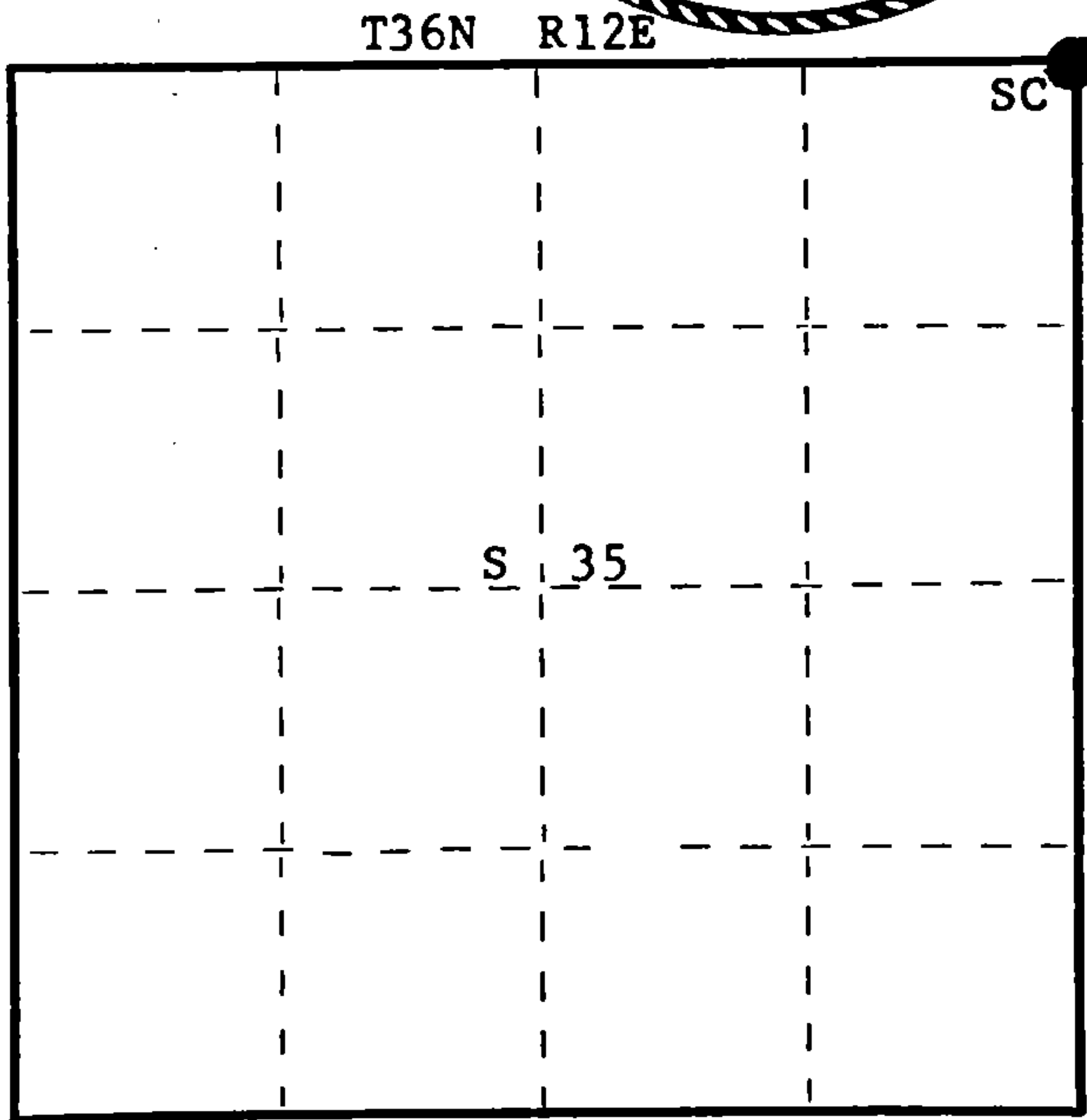
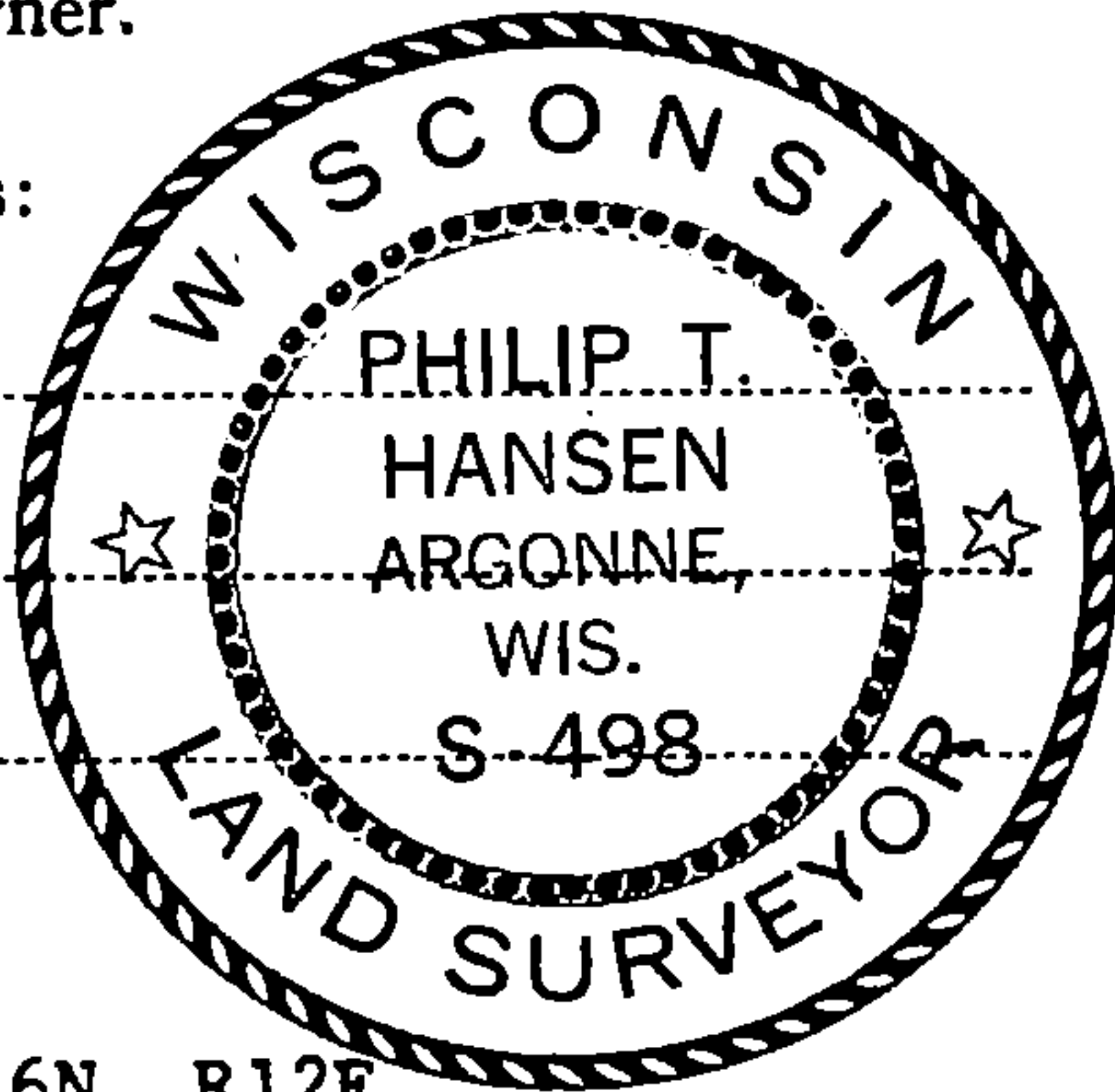
I Philip T. Hansen, do hereby  
certify that on the 8th day  
of August, 1977, I found  
evidence of the Section  
corner of Sec. 26, 25, 36, 35  
Township 36, North, Range  
12 East, Fourth Principal Meridian,  
as described hereon; and that from this evidence  
I established a new monument and accessories  
as described hereon to perpetuate the original  
location of this corner.

Resident witnesses:

Glen Barker

Jim Claflin

Herb Wagoner



○ = Corner monument restored.

History of original corner establishment:

Original Corner established by J.L. Nowlin, Deputy Surveyor, in 1859, from which Fir 8" bears N75°E, 12 links and Hemlock 8" bears S50°W, 15 links.

Corner re-established by Tom Arnott, Registered Land Surveyor. Set PK in highway at intersection of N-S Highway S - south, town road east and Kendall Road west.  
Used this for subdivision of Section 25.

Description of corner evidence found:

Recovered PK on the east edge of highway S.

Description of monument and accessories I established to perpetuate the original location of this corner.

Drove RR spike in place of PK in road.

Set 2½" Berntsen A-1 Federal Monument 100 links west for witness corner.

Monument projects 18" above ground. Cap stamped:

Marked BO from true corner.

Hi line pole #3612-35E9 S66°W, 58.4 links.

Hi line pole #3612 36W1 S41°E, 62.4 links.

T36N R12E  
Sec. 26 | 25 W.C.  
35 | 36  
S498-1977  
E-100 lks to Cor.

Dated at Rhineland, Wis., this 10th day of August, 1977

Signature Philip T. Hansen Title Registered Land Surveyor Registration No. S-498  
(County Surveyor, Registered Land Surveyor, or other duly authorized official)

Office of Register of Deeds, County of Forest, I hereby certify that the within  
instrument was filed in this office for record on the 22nd day of AUGUST, 1977  
at 3:30 o'clock P. M.

Eugene Stutzman  
(Register of Deeds)  
By \_\_\_\_\_ Deputy

DOCUMENT NUMBER **112162**

43612260000