

U.S. PUBLIC LAND SURVEY MONUMENT RECORD

NO. 4 36 12 28 20 00
T-13

HISTORY OF ORIGINAL CORNER ESTABLISHMENT:

I, TIFFANY N. HEISEL, DO HEREBY CERTIFY THAT ON THE 19TH DAY OF JUNE 2025, I FOUND EVIDENCE OF THE EAST QUARTER CORNER OF SECTION 28, T 36 N, R 12 E, FOURTH PRINCIPAL MERIDIAN, AND I RE-ESTABLISHED SAID CORNER ACCORDING TO THE WISCONSIN STATUTES AS SHOWN AND DESCRIBED HEREON.

1.) 1859 - J.L. NOWLIN, DEPUTY SURVEYOR, ESTABLISHED DURING ORIGINAL GOVERNMENT SURVEY.
2.) 1979 - OCT. 18TH, P. HANSEN FOUND NO EVIDENCE OF A CORNER. HE ESTABLISHED THE CORNER BY TRAVERSE AND COMPUTATION. HIS TRAVERSE RAN FROM SECTION CORNERS 21, 22, 27, AND 28 TO SECTION CORNERS 27, 28, 33, AND 34. COMPUTED DISTANCE IS 5326.225' AT BEARING S2°32'41"E. HE SET 1/4 CORNER AT 2663.112' INTERMEDIATE. HE SET A 1.5" X 18" IRON PIPE 6" NORTH OF CENTERLINE OF OLD HIGHWAY "8". 4" BELOW SURFACE FOR TRUE CORNER. HE SET A 2.5" BERTNSEN MONUMENT 50' NORTH FOR A WITNESS CORNER AND MARKED BEARING TREES AND TIED TO POWER POLE #3612.

246175

FILED ON:

07/17/2025 02:00 PM

CORTNEY BRITTEN CLEERMAN
REGISTER OF DEEDS

FOREST COUNTY WI

PAGES: 1

T-13

THIS 25TH DAY OF JUNE, 2025.

Tiffany N. Heisel
TIFFANY N. HEISEL
PROFESSIONAL LAND SURVEYOR

rasSmith

CREATIVITY BEYOND ENGINEERING

100 West Lawrence Street, Suite 412
Appleton, WI 54911-5754
(920) 731-3499
rasmith.com

WITNESSES TO CORNER LOCATION:

NICHOLAS J. KREPLINE

TIFFANY N. HEISEL

LEGEND

- 1.5" IRON PIPE FOUND 0.5' BELOW GRADE
- ALUM WITNESS MONUMENT FOUND
- 1" IRON PIPE SET



GRAPHIC SCALE



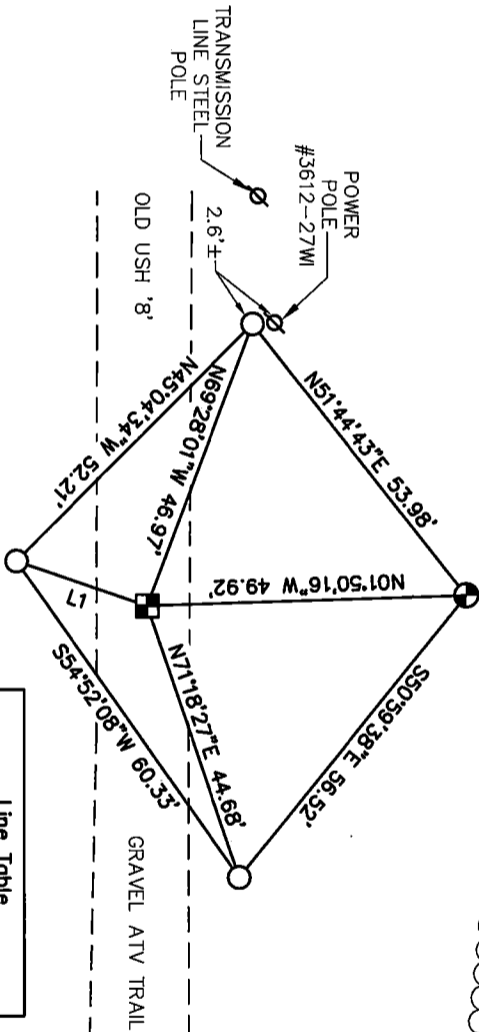
WISCONSIN COORDINATE REFERENCE SYSTEM FOR FOREST COUNTY

NAD83 (2011) COORDS.	NORTH (Y)	EAST (X)
	571,933.33	815,666.45

COORDINATES
OBTAINED
USING RTK
GPS

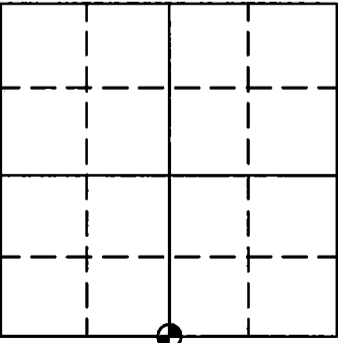
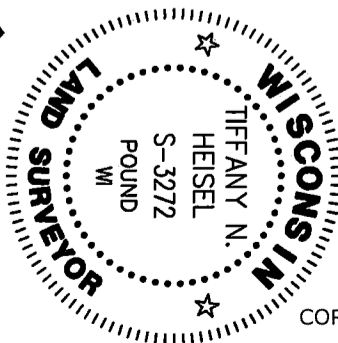
Line Table		
Line #	Direction	Length
L1	S18°59'03"W	21.57

DESCRIPTION OF CORNER EVIDENCE FOUND:
ON JUNE 19, 2025 RASMITH FOUND THE 1.5" IRON PIPE 0.5' BELOW THE GRAVEL SURFACE. THE WITNESS MONUMENT TO THE NORTH AND THE POWER POLE TO THE NORTHWEST WERE ALSO FOUND. THREE ADDITIONAL WITNESSES WERE SET AND TIED AS SHOWN. OLD HIGHWAY "8" IS NORTH OF CURRENT USH "8".



WOODS

SECTION: 28



☉ = CORNER LOCATION

T 36 N R 12 E

WISCONSIN

TOWN OF: CRANDON

COUNTY OF: FOREST

DRAFTED BY: TNH

43612282000

CERTIFIED LAND CORNER RESTORATION

Index No. T-13

State of Wisconsin }
County of Forest } ss.

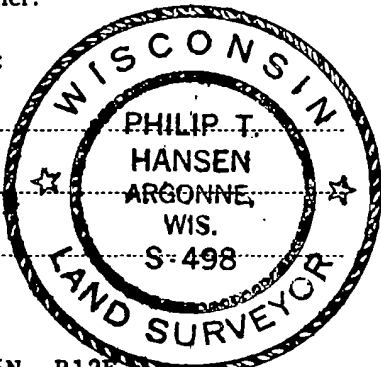
I Philip T. Hansen, do hereby
certify that on the 18th day
of October, 1979, I ~~found~~
~~established~~ re-established the Quarter
corner of Sections 27 and 28
Township 36, North, Range
12 East, Fourth Principal Meridian,
as described hereon; and that from this evidence
I established a new monument and accessories
as described hereon to perpetuate the original
location of this corner.

Resident witnesses:

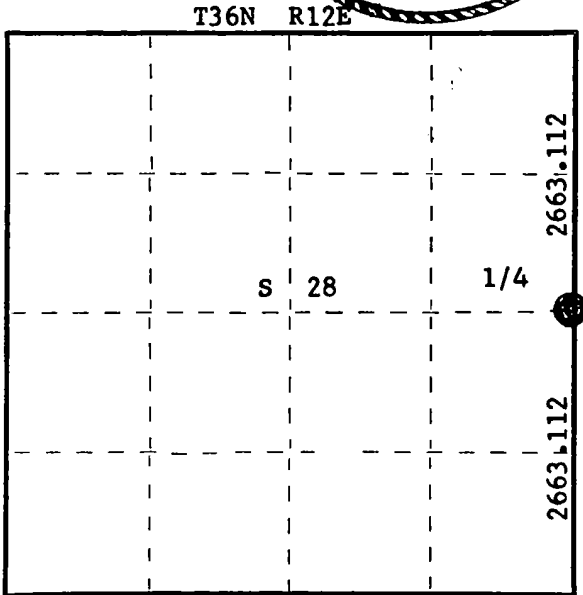
Glen Barker

Jim Claflin

Herb Wagoner



FORM 985 M. C. MILLER CO., MILWAUKEE



○ = Corner monument restored.

History of original corner establishment:

Original corner established by J.L. Nowlin, Deputy Surveyor, in 1859.

Description of corner evidence found:

No evidence of any corner recovered.

Corner established by traverse and computation. Ran traverse from section corners 21, 22, 27 and 28 to section corners 27, 28, 33 and 34. Computed distance is 5326.225 ft. at bearing S 2° 32' 41" E. Set 1/4 corner at 2663.112 feet intermediate.

Description of monument and accessories I established to perpetuate the original location of this corner.

Drove a 1-1/2" x 18" iron pipe 6" north of centerline of old Highway 8, 4 inches below the surface for true corner.

Set a 2-1/2" Berntsen A-1 Federal Monument 50' north for witness corner.

Monument projects 8" above ground - cap stamped:

Marked NBT's to true corner -

Sugar 6" N17°E 62.68' scribed 1/4 BT.

Sugar 5" N19°W 70.35' scribed 1/4 BT.

B.O. Power Pole #3612 27W N66°W 47.45.

T36N R12E
1/4 S28 + S27 W.C.
S 50' to Cor.
S498 - 1979

Dated at Rhineland, Wis., this 16th day of May, 1980

Signature Philip T. Hansen Title Registered Land Surveyor Registration No. S-498
(County Surveyor, Registered Land Surveyor, or other duly authorized official)

Office of Register of Deeds, County of Forest, I hereby certify that the within
instrument was filed in this office for record on the 2nd day of June, 1980
at 8:30 o'clock A. M.

Eugene J. Stutzman
(Register of Deeds)
By _____ Deputy

DOCUMENT NO. **118000**

43012282000

CERTIFIED LAND CORNER RESTORATION

Index No. 7-13

State of Wisconsin }
County of Forest } ss.

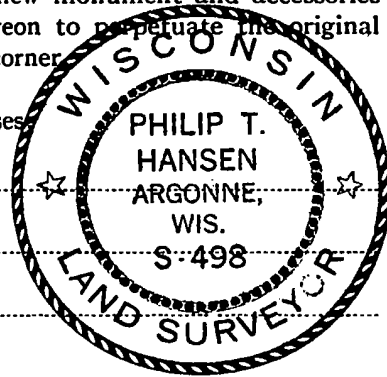
I Philip T. Hansen, do hereby
certify that on the 7th day
of June, 1979, I ~~found~~
established the 1/4
corner of Section 27
Township 36N, North, Range
12 East, Fourth Principal Meridian,
as described hereon; and that from this evidence
I established a new monument and accessories
as described hereon to perpetuate the original
location of this corner.

Resident witnesses

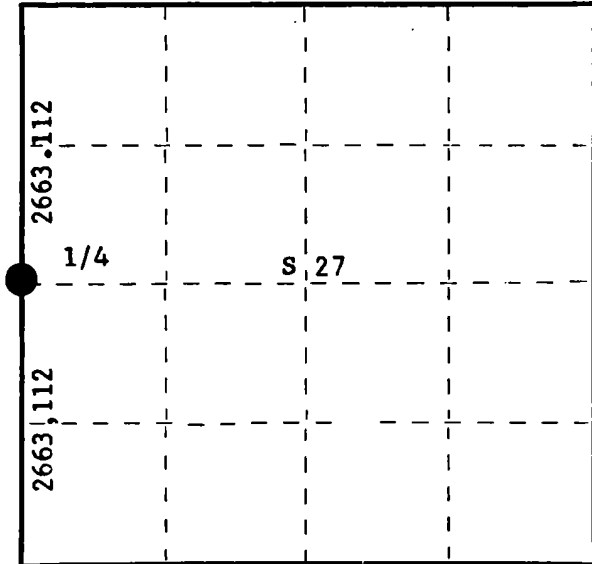
Glen Barker

Jim Claflin

Herb Wagoner



T36N R12E



○ = Corner monument restored.

History of original corner establishment:

Original corner established by Wm. E. Dougherty, Deputy Surveyor, in 1859.
No records of any subsequent survey.

Description of corner evidence found:

No evidence of any corner recovered. All evidence destroyed during construction of old Highway 8. Corner established by traverse and computation. Ran traverse from section corner 21, 22, 27 and 28 to section corner 27, 28, 33 and 34. Computed distance at 5326.225 feet at bearing S 2° 32' 41" E. Set 1/4 corner at 2663.112 feet intermediate.

Description of monument and accessories I established to perpetuate the original location of this corner.

Drove a 1-1/2" x 18" iron pipe, 6" North of the centerline of old Highway 8, 4" below the surface of the road.

Set a 2-1/2" Berntsen A-1 Federal Monument, 50 feet north for a witness monument.

Monument projects 8" above ground - cap stamped:

Marked NBT's -

Sugar 6" N17°E 62.68 feet, scribed 1/4 BT.

Sugar 5" N19°W 70.35 feet, scribed 1/4 BT.

NBO - Power Pole #3612 27101 N66°W 47.45'

T36N R12E

1/4 28 + 27 W.C.

S 50 ft. to Cor.

S498 - 1979

Dated at Rhineland, Wis., this 12th day of June, 1979.

Signature Philip T. Hansen Title Registered Land Surveyor Registration No. S-498
(County Surveyor, Registered Land Surveyor, or other duly authorized official)

Office of Register of Deeds, County of Forest, I hereby certify that the within
instrument was filed in this office for record on the 13th day of November, 1979
at 8:30 o'clock A. M.

Eugene Staszny
(Register of Deeds)
By _____ Deputy

DOCUMENT NO. **117078**