

U.S. PUBLIC LAND SURVEY MONUMENT RECORD

NO. 4 36 12 28 20 20
T-11

HISTORY OF ORIGINAL CORNER ESTABLISHMENT:

1.) 1979 - OCT. 18TH, P. HANSEN FOUND NO EVIDENCE OF A CORNER. HE ESTABLISHED THE CORNER BY TRAVERSE AND COMPUTATION. HIS TRAVERSE RAN FROM THE SOUTH 1/4 TO THE NORTH 1/4 AND FROM THE EAST 1/4 TO THE WEST 1/4 TO ESTABLISH THE CENTER. FROM N 1/4, S2°12'15"E, 2813.90', FROM E 1/4, S84°04'18"W, 2760.03', FROM S 1/4, N2°12'15"W, 2676.05', AND FROM W 1/4, N84°04'18"E, 2647.39'. LOCATION IS 8' SOUTH OF CENTERLINE OF NEW HWY "8". HE SET A BERTNSEN MONUMENT S2°12'15"E, 150' FROM THE C 1/4 CORNER. HE SET A 1.5" IRON PIPE S2°12'15"E, 200' FROM THE CORNER.

246192

FILED ON:

07/21/2025 09:37 AM

CORTNEY BRITTEN CLEERMAN
REGISTER OF DEEDS

FOREST COUNTY WI

PAGES: 1

I, TIFFANY N. HEISEL, DO HEREBY CERTIFY THAT ON THE 19TH DAY OF JUNE 2025, I FOUND EVIDENCE OF THE CENTER OF SECTION 28, T 36 N, R 12 E, FOURTH PRINCIPAL MERIDIAN, AND I RE-ESTABLISHED SAID CORNER ACCORDING TO THE WISCONSIN STATUTES AS SHOWN AND DESCRIBED HEREON.

THIS 25TH DAY OF JUNE, 2025.

Tiffany N. Heisel
TIFFANY N. HEISEL
PROFESSIONAL LAND SURVEYOR

rasSmith

100 West Lawrence Street, Suite 412
Appleton, WI 54911-5754
(920) 731-3499
rasmith.com

WITNESSES TO CORNER LOCATION:

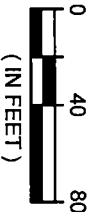
NICHOLAS J. KREPLINE

TIFFANY N. HEISEL

LEGEND

- 2.5" FOREST COUNTY ALUM MON FOUND
- ALUM WITNESS MONUMENT FOUND
- 1" IRON PIPE SET
- 1" IRON PIPE FOUND

GRAPHIC SCALE



WISCONSIN COORDINATE REFERENCE SYSTEM FOR FOREST COUNTY

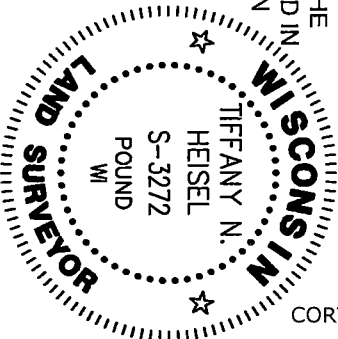
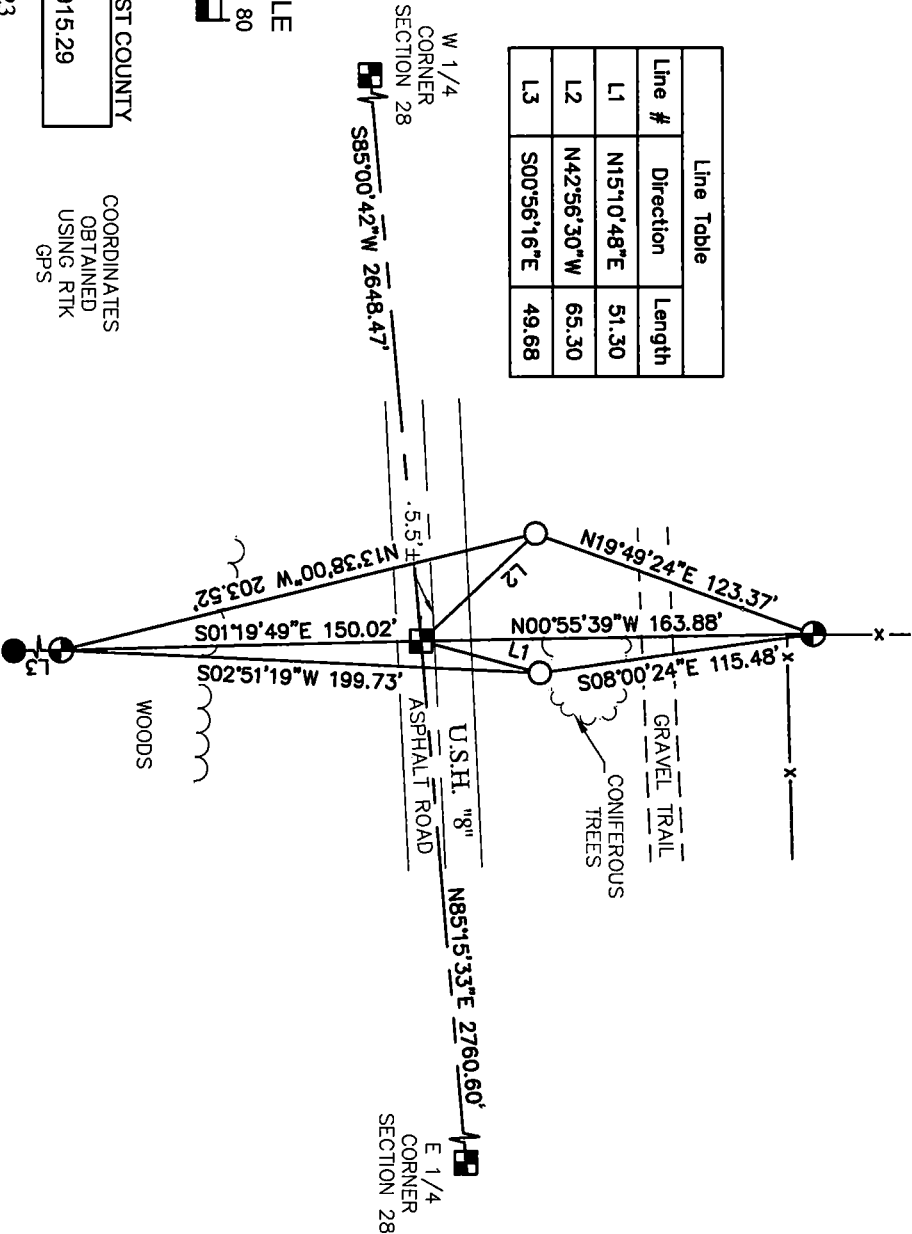
NAD83 (2011) COORDS.	NORTH (Y)	EAST (X)
	571,705.17	812,915.29

COORDINATES
OBTAINED
USING RTK
GPS

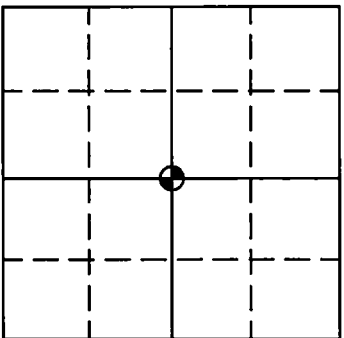
DESCRIPTION OF CORNER EVIDENCE FOUND:

ON JUNE 19, 2025 RASMITH FOUND THE TWO WITNESS MONUMENTS TO THE SOUTH AND AN ALUM. MON TO THE NORTH CALLED OUT ON A 2002 SURVEY. DISTANCES FROM THE EAST 1/4 AND WEST 1/4 CORNERS WERE USED IN CONJUNCTION WITH THE 2002 AND 2013 SURVEYS ON FILE TO SET A 3" MAG SPIKE AT THE CENTER OF SECTION BY PROPORTIONATE MEASUREMENT. TWO ADDITIONAL WITNESSES WERE SET AND TIED AS SHOWN.

Line Table		
Line #	Direction	Length
L1	N151°0'48"E	51.30
L2	N42°56'30"W	65.30
L3	S00°56'16"E	49.68



SECTION: 28



☉ = CORNER LOCATION

T 36 N R 12 E

WISCONSIN

TOWN OF: CRANDON

COUNTY OF: FOREST

DRAFTED BY: TNH

43612282020

CERTIFIED LAND CORNER RESTORATION

Index No. T-11

State of Wisconsin }
County of Forest } ss.

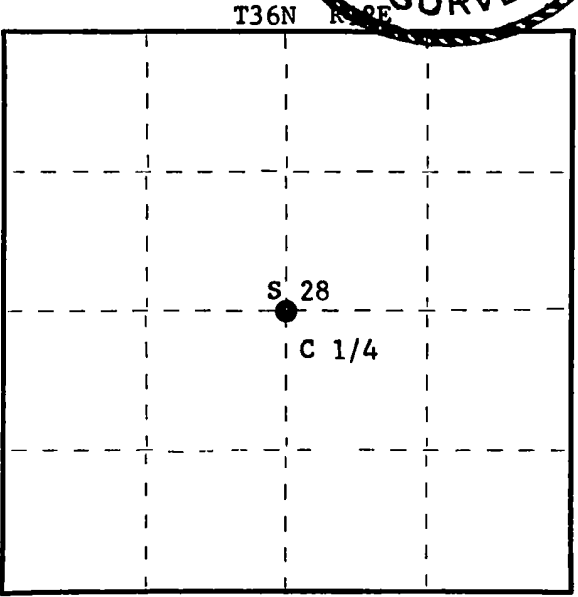
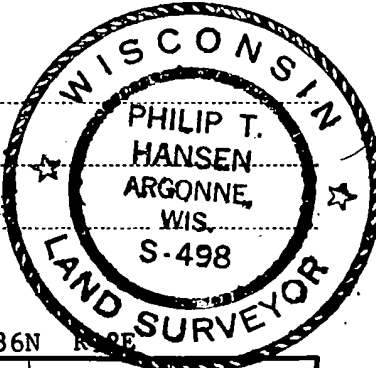
I, Philip T. Hansen, do hereby
certify that on the 18th day
of October, 1979, I ~~found~~
~~recovered~~ established the C 1/4
corner of Section 28
Township 36, North, Range
12 East, Fourth Principal Meridian,
as described hereon; and that from this evidence
I established a new monument and accessories
as described hereon to perpetuate the original
location of this corner.

Resident witnesses:

Glen Barker

Jim Claflin

Herb Wagoner



○ = Corner monument restored.

History of original corner establishment:

No records available on previous survey.

Description of corner evidence found:

No evidence of any corner recovered.
Corner established by traverse and computation.
Ran traverse from S 1/4 to N 1/4 and from E 1/4 to West 1/4 to establish C 1/4.
Corner sets S2°12'15"E, 2813.90 from N 1/4.
S84°04'18"W, 2760.03 from E 1/4.
N2°12'15"W, 2676.05 from S 1/4.
N84°04'18"E, 2647.39 from W 1/4.

Description of monument and accessories I established to perpetuate the original location of this corner.

Location of corner is 8' south of centerline of New Highway 8.
Set a 2-1/2" Berntsen A-1 Federal Monument, S2°12'15" E, 150' from C 1/4 corner,
projecting 18", cap stamped:
Set a 1-1/2" x 18" iron pipe, flush with ground, S2°12'15" E, 200 ft.
from C 1/4 corner in the N-S 1/4 line.
Marked NBT's - Sugar 6" N6°W 85.60 feet
Sugar 6" S71°E 8.90 feet
Sugar 5" S3°W 11.98 feet
all scribed C 1/4 BT

S498
T36N R12E
C 1/4 S + 28
N 2° 12' 15" W
150 ft. to Cor
1979

Dated at Rhineland, Wis., this 16th day of May, 1980

Signature Philip T. Hansen Title Registered Land Surveyor Registration No. S-498
(County Surveyor, Registered Land Surveyor, or other duly authorized official)

Office of Register of Deeds, County of Forest, I hereby certify that the within
instrument was filed in this office for record on the 2nd day of June, 1980
at 8:30 o'clock A. M.

Eugene Stutzman
(Register of Deeds)
By _____ Deputy

DOCUMENT NO. **118003**

FORM 985 H. C. MILLER CO., MILWAUKEE

43012 28 2020