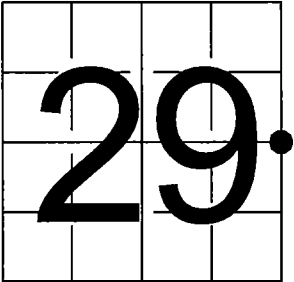


U.S. PUBLIC LAND SURVEY  
MONUMENT RECORD

NOTE: This form is intended and designed to fulfill all requirements of Wisconsin Administrative Code, Chapter A-E 7.08 U.S. Public Land Survey Monument Record (3) (a-i)

A-E 7.08(3)(a) Identity of corner:  
East 1/4 Corner Section 29,  
Township 36 North, Range 12 East  
of the Fourth Principal Meridian,  
Town of Crandon, Forest County, Wisconsin

WISCRS - FOREST COUNTY  
N: 571,474.784 USft (571,474.796)  
E: 810,276.851 USft (810,276.792)  
Datum: NAD83 (2011)  
GNSS Method RTN  
GNSS Control WSCORS VRS



The coordinate value shown has been verified by the average of two or more GPS observations at a markedly different time. Coordinates shown in parenthesis are 2021 measurement values.

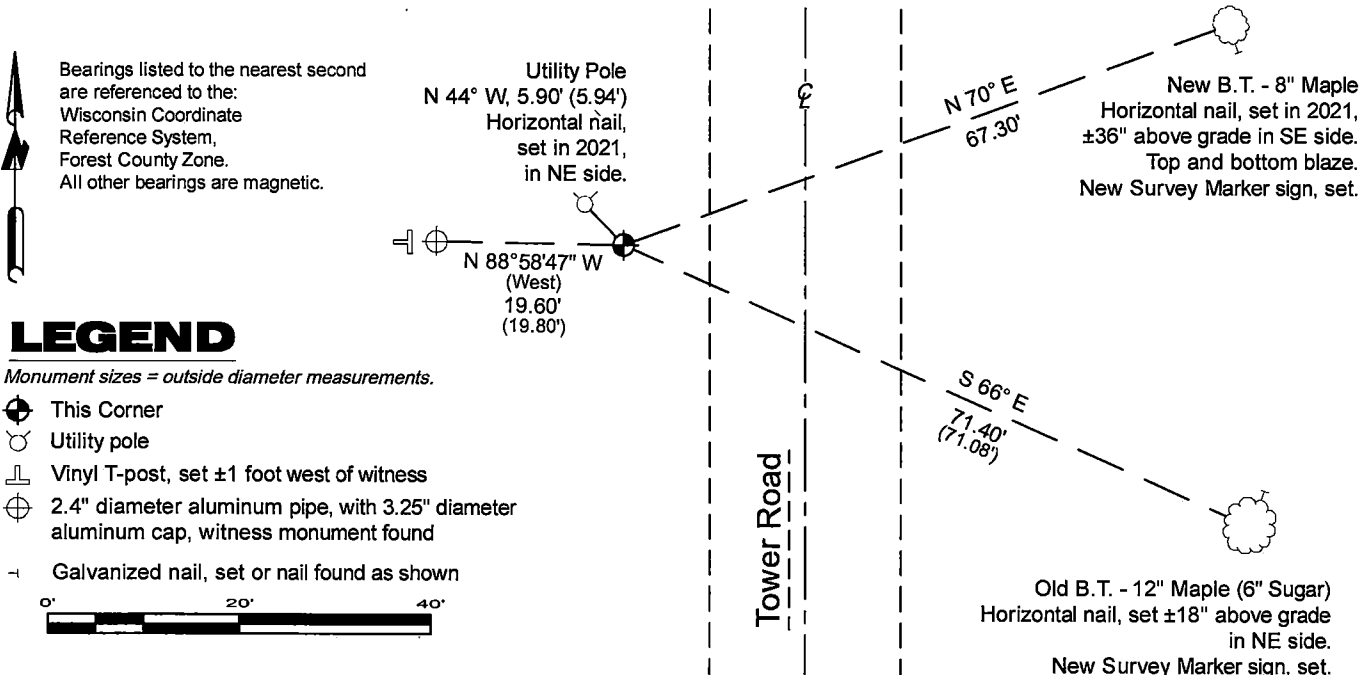
A-E 7.08(3)(b) Original Surveyor: William E. Daugherty - August 4, 1859 to August 9, 1859  
Birch 10 - S 86° E, 17 Links, Birch 8 - N 71° W, 18 Links

See previous Certified Land Corner Restoration - T-9 - June 21, 1976 - Surveyor 498 - Philip T. Hansen - THENCE:

- December 1, 1994 - Surveyor 1394 - Norman A. Harrison - indicates this position as "irons found" on county record Map #361229-19941201.
- May 13, 1997 - Surveyor 1731 - Kip W. Soder - indicates this position as "iron pipe in base of old R/W post" on county record Map #361228-19970513 & #361228-19970513A.
- October 20, 1999 - Surveyor 1394 - Norman A. Harrison - indicates this position as by symbol on county record Map #361229-19991020 & #361228-19991020.
- November 06, 2000 - Surveyor 1731 - Kip W. Soder - indicates this position as "1" dia. iron pipe found" on county record Map #361229-20001106.
- June 18, 2013 - Surveyor 1451 - Eugene C. Uttech - - indicates this position as "mon. found" on county record Map #361228-20130618.
- July 26, 2018 - Surveyor 1523 - Todd J. Loftus - indicates this position as "1" iron pipe" on county record Map #361229-20180726 & #361229-20180727.
- June 21, 2013 - Surveyor 1731 - Kip W. Soder - indicates this position as "1" dia. iron pipe found" on county record Map #361228-20130621.
- June 1, 2021 - Surveyor 2656 - Jeffrey L. DeMuth - indicates this position as "found 1" diameter iron pipe" on county record Map #361229-20210601.
- December 18, 2022 - Surveyor 809-8 - Michael S. Hess - indicates this position as "1" iron pipe" on county record Map #361229-20221218.
- May 5, 2025 - Surveyor 2729 - Gregory S. Maines - indicates this position as "1" dia. iron pipe found" on county record Map #361228-20250512.

August 20, 2025 - I found a 1" diameter iron pipe. The monument is ±19 feet west of the centerline of Tower Road and flush with grade. I also found 1 of Hansen's bearing trees alive and in good condition, Hansen's witness monument, and a utility pole that agrees with Hansen's bearing and distance, but it is doubtful that it is the same pole. I established 2 new reference monuments as shown below.

A-E 7.08(3)(c)(d) Plan view of corner with references to at least 4 witness monuments.

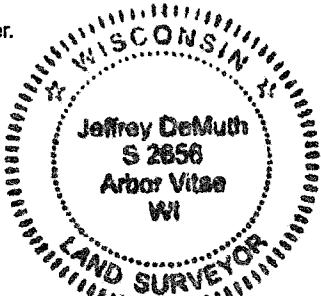


A-E 7.08(3)(e) 1859 Surveyor set a post, 1976 Surveyor doesn't say he set a pipe, but I believe he did, subsequent Surveyors found the same, as did I in 2021 and in 2025.

A-E 7.08(3)(f) I accept this monument in good faith as a FOUND PERPETUATED LOCATION of the corner.

A-E 7.08(3)(g)(h) This corner was not determined through lost-corner-proportionate methods.

A-E 7.08(3)(i) I, Jeffrey L. DeMuth, Professional Land Surveyor No. S-2656, hereby certify that the corner location on this record was determined by me or under my direction and control, and that this U.S. Public Land Survey Monument Record is correct and complete to the best of my knowledge, and belief.



SIGNATURE

August 21, 2025

DATE

43612292000

43612292000

T9

# CERTIFIED LAND CORNER RESTORATION

Index No. T-9

State of Wisconsin }  
County of Forest } ss.

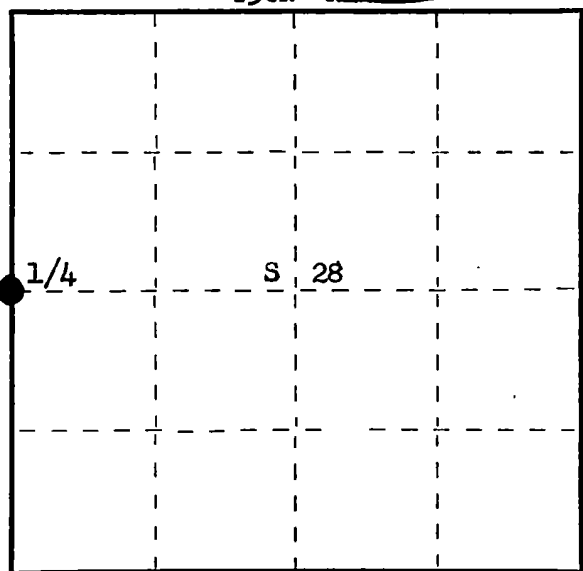
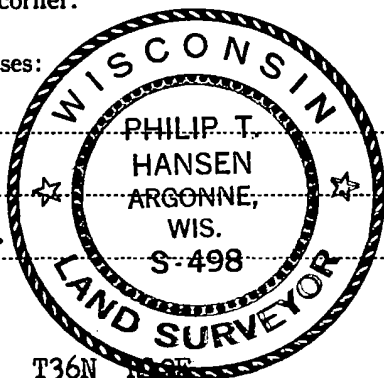
I Philip T. Hansen, do hereby  
certify that on the 16th day  
of June, 19 76, I found  
evidence of the Quarter  
corner of Section 28 - 29  
Township 36, North, Range  
12 East, Fourth Principal Meridian,  
as described hereon; and that from this evidence  
I established a new monument and accessories  
as described hereon to perpetuate the original  
location of this corner.

Resident witnesses:

Glen Barker

Jim Claflin

Herb Wagoner



○ = Corner monument restored.

History of original corner establishment:

Original corner established by Wm. E. Dougherty, Deputy Surveyor, in 1859, from which  
Birch 10" bears S86°E 17 lks and Birch 8" bears N71°W 18 lks.

State Highway Engineers tied to this 1/4 corner during survey for relocation of Highway "8".

Description of corner evidence found:

Recovered 7" yellow right of way post set for 1/4 corner.

No record of any bearing trees. Distance to North right of way line (112') checks  
records on highway plat.

Computed traverse distance from Section Corner 28, 29, 32, 33 is 40.65 chains, bearing  
N 0° 19' E.

Description of monument and accessories I established to perpetuate the original location of this corner.

Set 2 1/2" Berntsen A-1 Federal Monument 30 lks West for witness corner. Monument projects 8"  
above ground. Cap stamped.

NBTs - Sugar 6" S66°E 107.7 lks, scribed 1/4 BT.

Power Pole #MB 69 - PP 35 N 44° W 9.0 lks.

Pipe and BT painted blue.

T36N R12E

W. C.

S498 1/4 29/28 1976

E 30 lks. to Cor.

Dated at Rhineland, Wis., this 21st day of June, 19 76.

Signature Philip T. Hansen Title Registered Land Surveyor Registration No. S-498  
(County Surveyor, Registered Land Surveyor, or other duly authorized official)

Office of Register of Deeds, County of Forest, I hereby certify that the within  
instrument was filed in this office for record on the 22nd day of June, 19 76  
at 3:45 o'clock P.M.

Eugene Stutzman  
(Register of Deeds)

DOCUMENT NUMBER

**109502**

By \_\_\_\_\_ Deputy

FORM 985

43612292000