

**!Attention!**

This PLSS corner is in the process of being updated by Forest County. An updated Tie Sheet will be available for this corner soon.

Please contact Kayla at the Forest County Land Information Department for more information.

Contact Info:

715-478-1387 or [Kayla.L@co.forest.wi.us](mailto:Kayla.L@co.forest.wi.us)

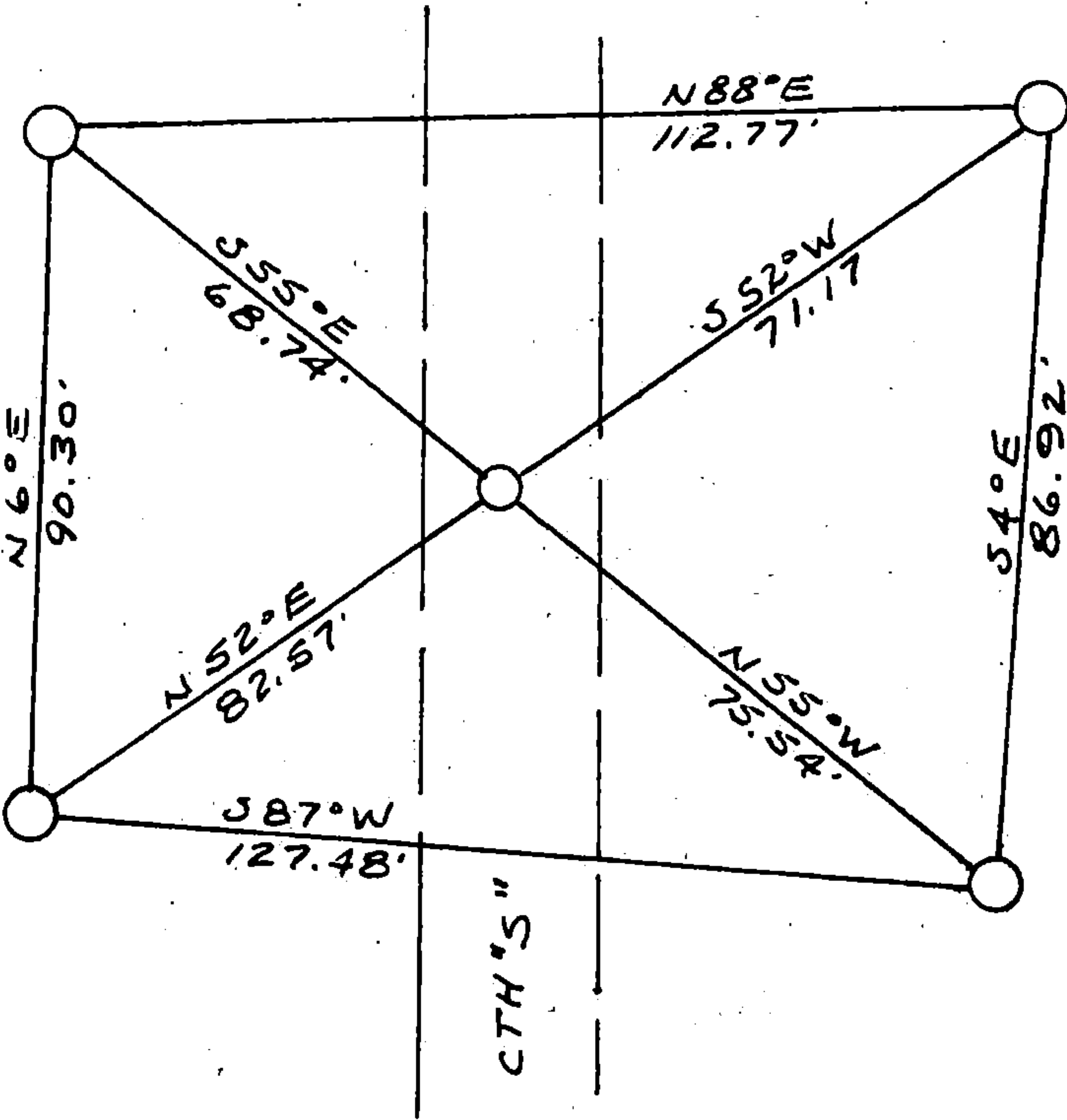
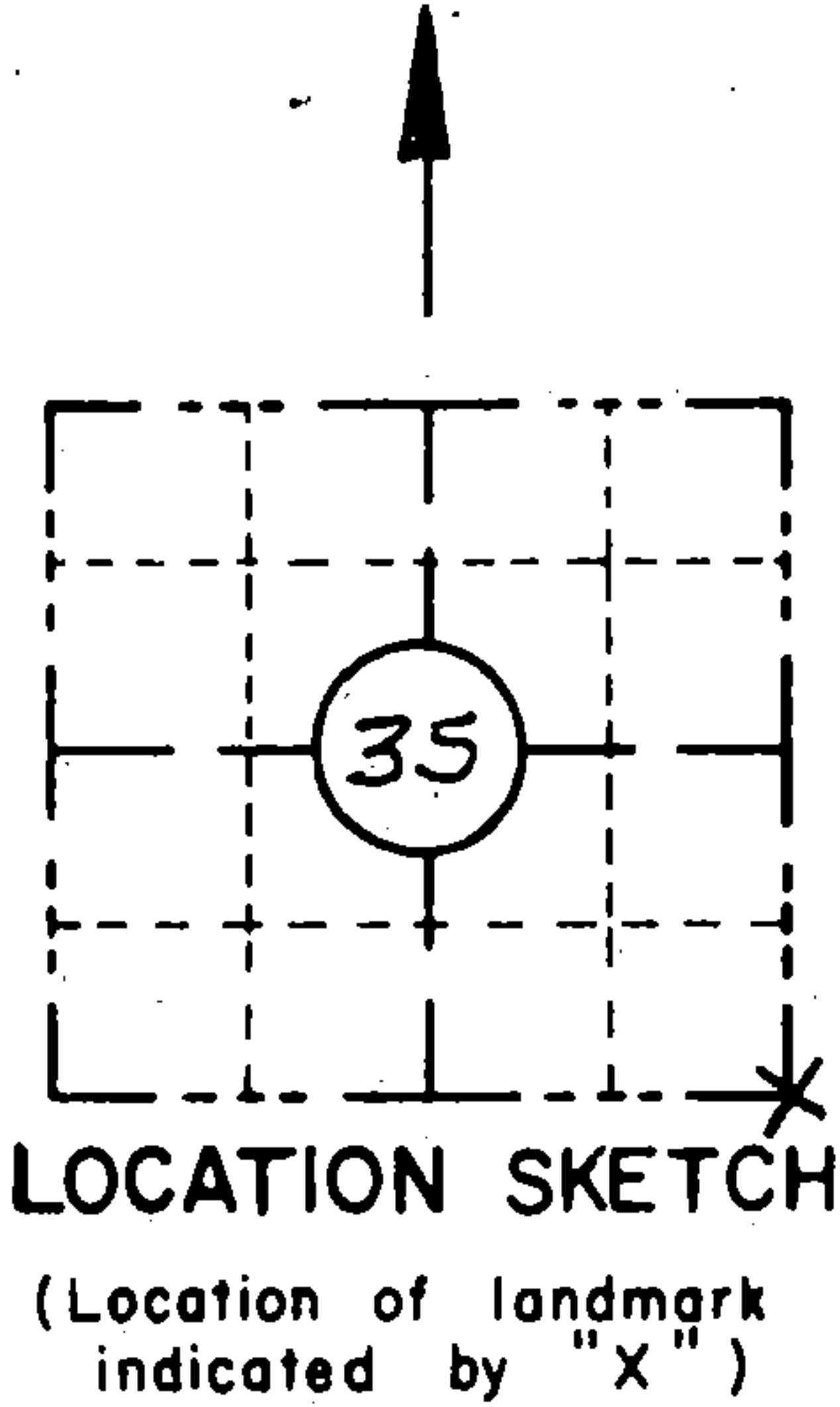
ORIGINAL ON FILE IN CO CLERK'S OFFICE  
COPY HERE FOR REFERENCE

RECORD AND CERTIFICATION OF U.S.  
PUBLIC LAND SURVEY CONTROL STATION  
E-D-716-72

State of Wisconsin / Department of Transportation

District 7	Project I. D. 9339-06-70	Located by R.B. JOHNSON - SURVEY CREW CHIEF			
Corner S.E. COR. 35 SECTION	Township 36 N	Range (E,W) 12 E.	County FOREST		
Wisconsin Coordinates CORNER	East (X) NA	North (Y) NA	Elevation (Z)	Zone	
Control Station Name	East (X)	North (Y)	Elevation (Z)	Zone	
Horizontal — NORTH AMERICAN, 1927		CONTROL DATUM Vertical — MEAN SEA LEVEL, 1929 ADJUSTMENT			
Horizontal — _____ Order		SURVEY CONTROL Vertical — _____ Order			

SKETCH



I hereby certify that on the 4<sup>TH</sup> day of MAY 1993, that I did locate the above corner which was evidenced by R.R. SPIKE; I further certify that to perpetuate the location of such corner I did, at the exact location thereof, place a permanent marker consisting of NA; I further certify that I did establish 4 references or witness monuments consisting of 5/8" x 24" RE-BARS WITH RED PLASTIC WDOT CAPS located as shown above:

SEAL

Signature Registered Land Surveyor	Registration No. S--	Title
------------------------------------	-------------------------	-------

CORNER  
S.E. COR.  
SECTION  
35  
TOWN  
36 N  
RANGE  
12 E

4361235 0000

CERTIFIED LAND CORNER RESTORATION

Index No. A-21

State of Wisconsin }  
County of Forest } ss.

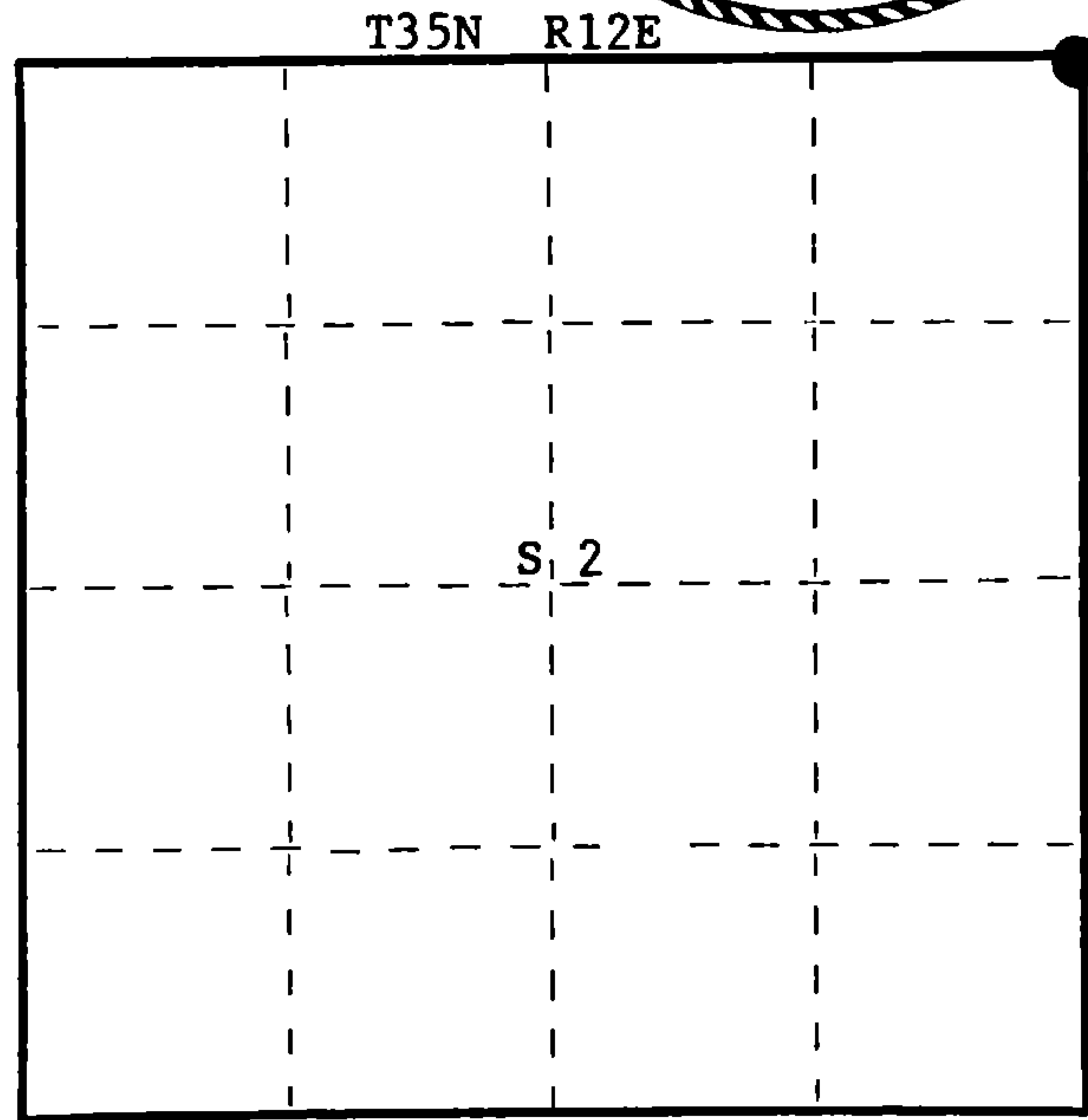
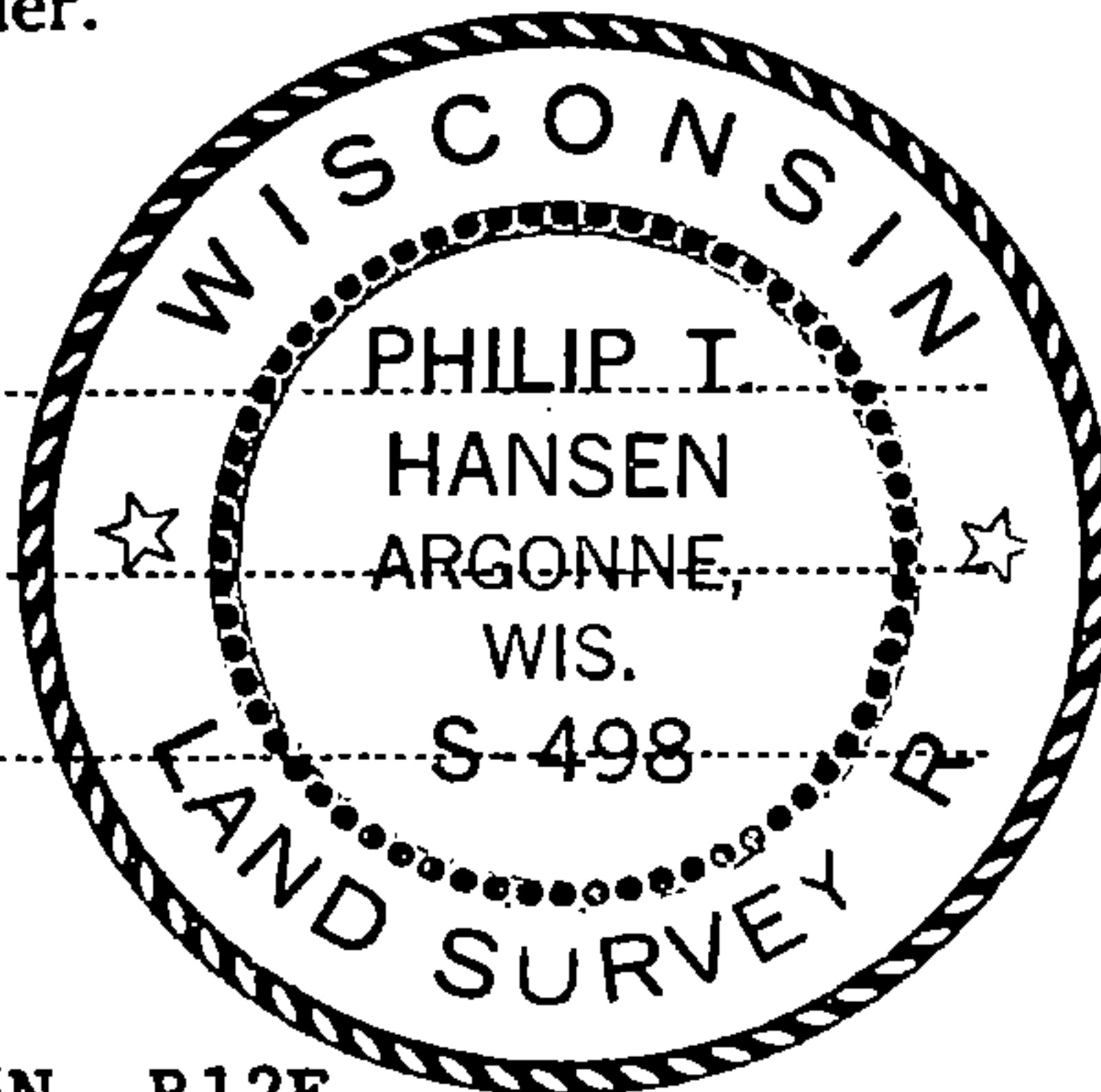
I Philip T. Hansen, do hereby  
certify that on the 29th day  
of July, 19 77, I ~~found~~  
established the Section  
corner of Sec. 35, 36, 2, 1  
Township 36 - 35, North, Range  
12 East, Fourth Principal Meridian,  
as described hereon; and that from this evidence  
I established a new monument and accessories  
as described hereon to perpetuate the original  
location of this corner.

Resident witnesses:

Glen Barker

Jim Claflin

Herb Wagoner



○ = Corner monument restored.

History of original corner establishment:

Original Corner established by A. Curtiss, Deputy Surveyor, in 1858, from which ironwood 10" bears N62°E, 36 links; Sugar 12" N62°W, 24 links; yellow birch 12" S20°W, 39 links; sugar maple 15" S25°E, 60 links.

No records of any subsequent survey.

Description of corner evidence found:

Corner established by accepting the intersection of centerline of County Trunk S, Sipple Road to west and Town road east for corner.

Description of monument and accessories I established to perpetuate the original location of this corner.

Set a railroad spike at the intersection for true corner.  
Set a 2½" Berntsen A-1 Federal Monument for witness corner S45°E, 90 links, stamped:  
Monument projects 2' above ground.  
Marked BTs - Sugar 10" N70°W, 153.3 links.  
Sugar 7" SE, 171.8 links  
Sugar 6" S66°W, 102.9 links.  
Sign post, County S & Sipple Road N54°W, 48.5 links.  
Measurements made from true corner.

T36N R12E  
Sec.  $\frac{35}{2} + \frac{36}{1}$  W.C.  
T35N R12E  
S498  
N45°W 90 lks. to Cor.

Dated at Rhineland, Wis., this 2nd day of August, 1977

Signature Philip T. Hansen Title Registered Land Surveyor Registration No. S-498  
(County Surveyor, Registered Land Surveyor, or other duly authorized official)

Office of Register of Deeds, County of Forest, I hereby certify that the within  
instrument was filed in this office for record on the 22nd day of AUGUST, 1977.  
at 3:30 o'clock P. M.

Eugene Stutzman  
(Register of Deeds)  
By \_\_\_\_\_ Deputy

DOCUMENT NUMBER **112168**

FORM 985 H. C. MILLER CO., MILWAUKEE

43612350000