

**!Attention!**

This PLSS corner is in the process of being updated by Forest County. An updated Tie Sheet will be available for this corner soon.

Please contact Kayla at the Forest County Land Information Department for more information.

Contact Info:

715-478-1387 or [Kayla.L@co.forest.wi.us](mailto:Kayla.L@co.forest.wi.us)

ORIGINAL ON FILE IN CO CLERK'S OFFICE  
COPY HERE FOR REFERENCE

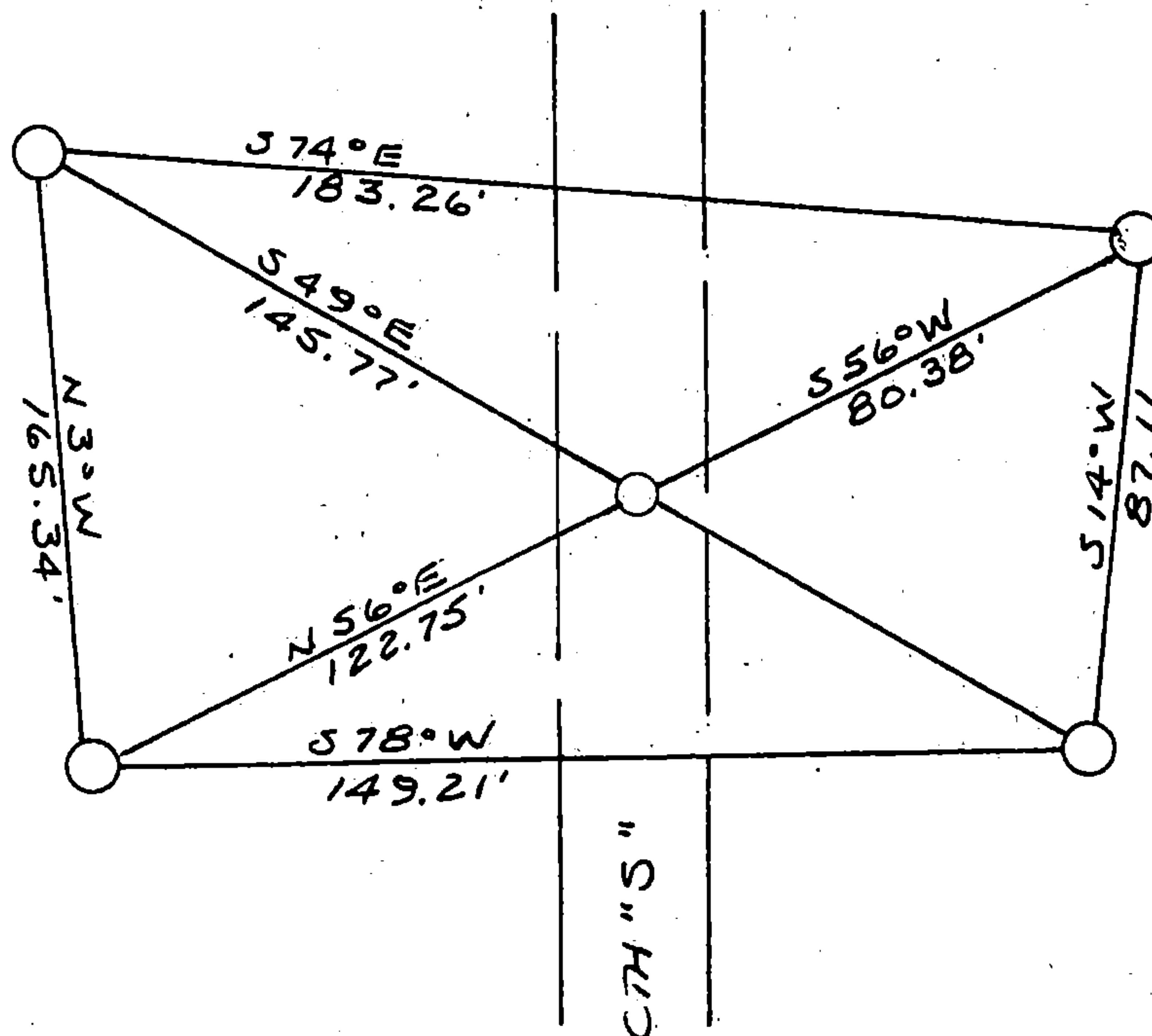
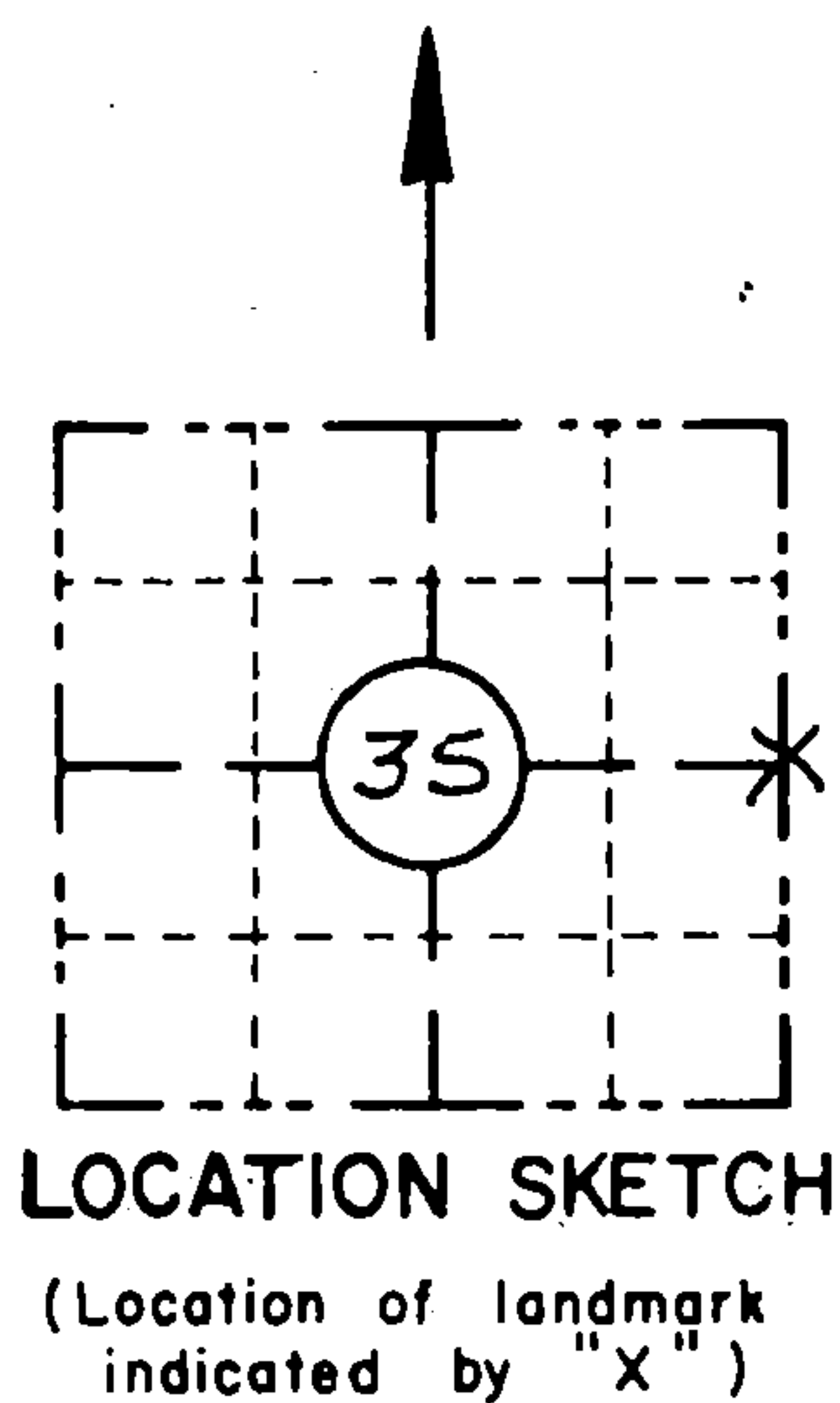
RECORD AND CERTIFICATION OF U.S.  
PUBLIC LAND SURVEY CONTROL STATION

E-D-716-72

State of Wisconsin / Department of Transportation

District 7	Project I. D. 9339-06-70	Located by R. B. JOHNSON - SURVEY CREW CHIEF			
Corner E - 1/4 35 SECTION	Township 36. N	Range (E,W) 12 E		County FOREST	
Wisconsin Coordinates CORNER N/A	East (X)	North (Y)		Elevation (Z)	Zone
Control Station Name	East (X)	North (Y)		Elevation (Z)	Zone
Horizontal — NORTH AMERICAN, 1927		CONTROL DATUM Vertical — MEAN SEA LEVEL, 1929 ADJUSTMENT			
Horizontal — Order		SURVEY CONTROL Vertical — Order			

SKETCH



I hereby certify that on the 4TH day of MAY 1993, that I did locate the above corner which was evidenced by R. R. SPIKE

; I further certify that to perpetuate the location of such corner I did, at the exact location thereof, place a permanent marker consisting of NONE

; I further certify that I did establish 4 references or witness monuments consisting of 5/8" x 24" RE-BARS WITH RED PLASTIC WDOT CAPS

located as shown above:

SEAL

Signature Registered Land Surveyor	Registration No. S--	Title
------------------------------------	-------------------------	-------

43612352000

CORNER  
EAST 1/4  
SECTION  
35  
TOWN  
T 36 N  
RANGE  
R 12 E  
X-21

CERTIFIED LAND CORNER RESTORATION

Index No. **X-21**

State of Wisconsin }  
County of Forest } ss.

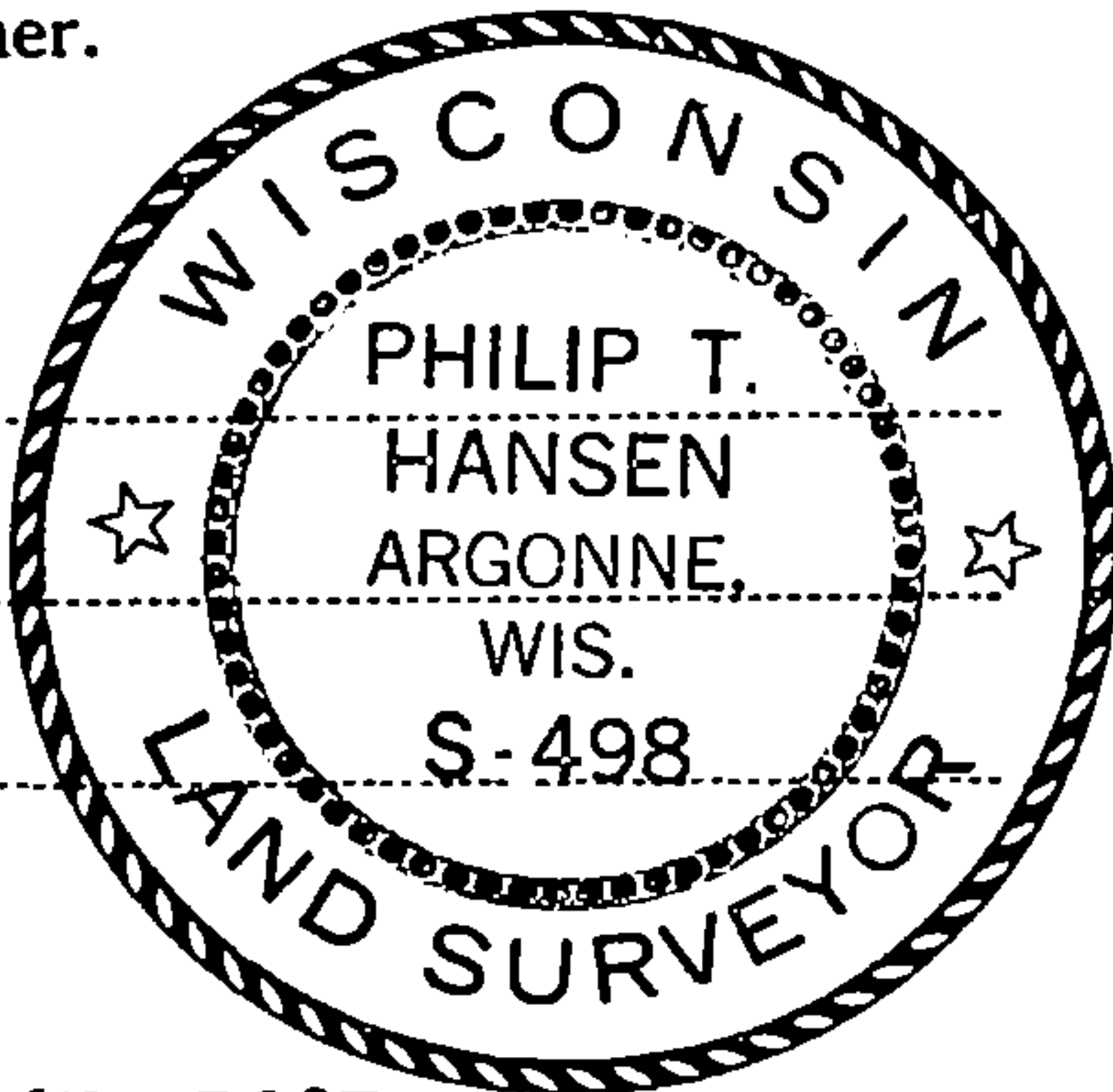
I Philip T. Hansen, do hereby  
certify that on the 3rd day  
of August, 1977, I found  
evidence of the Quarter  
corner of Section 35 & 36  
Township 36 North, Range  
12 East, Fourth Principal Meridian,  
as described hereon; and that from this evidence  
I established a new monument and accessories  
as described hereon to perpetuate the original  
location of this corner.

Resident witnesses:

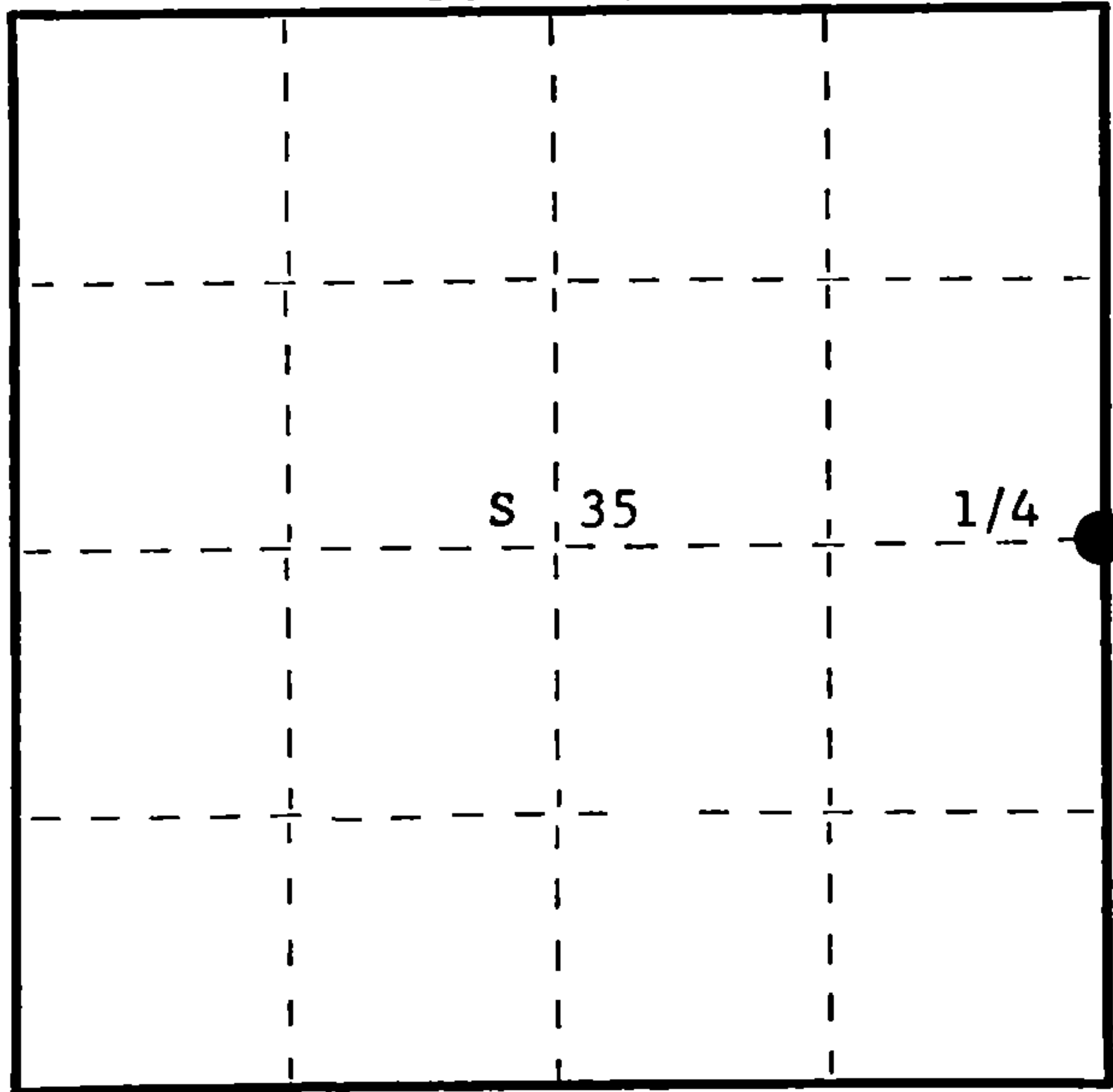
Glen Barker

Jim Claflin

Herb Wagoner



T36N R12E



○ = Corner monument restored.

History of original corner establishment:

Original Corner established by J.L. Nowlin, Deputy Surveyor, in 1859, from which  
Birch 10" bears S37°W, 10 links and Birch 11" bears S56°E, 10 links.

No records of any subsequent survey.

Description of corner evidence found:

Accepted the old E-W fence line running west from angle in county trunk S as the E-W 1/4  
line. This fence has been accepted as the quarter line for over 50 years.

Description of monument and accessories I established to perpetuate the original location of this corner.

Set a RR spike in line with west fence 33 feet east of old RR fence. This point falls  
3' west of center line of highway.

Set a 2 1/2" Berntsen A-1 Federal Monument 55 links west of the RR spike in highway for  
witness corner. Cap stamped:

Marked B.O. from true corner:

3/4" iron pipe S36°W, 100 links, projects 2' above ground.

Power pole PT Co. GL 1970 S30°E, 91 links.

T36N R12E  
1/4 S35+S36 W.C.

S498-1977  
E 55 lks to Cor.

Dated at Rhinelander, Wis., this 9th day of August, 1977.

Signature *Philip T. Hansen* Title Registered Land Surveyor Registration No. S-498  
(County Surveyor, Registered Land Surveyor, or other duly authorized official)

Office of Register of Deeds, County of Forest, I hereby certify that the within  
instrument was filed in this office for record on the 22nd day of AUGUST, 1977  
at 3:30 o'clock P. M.

*Eugene J. Staszewski*  
(Register of Deeds)

By Deputy

DOCUMENT NUMBER **112165**

FORM 985 H. C. MILLER CO., MILWAUKEE

H3612 352000