

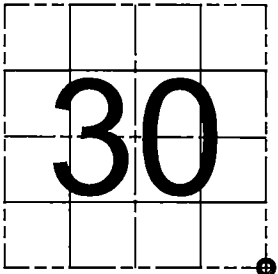
FILED ON:  
12/10/2025 10:02 AM  
CORTNEY BRITTEN CLEEREMAN  
REGISTER OF DEEDS  
FOREST COUNTY WI  
PAGES: 1

U S PUBLIC LAND SURVEY MONUMENT RECORD

(As Required By s. A-E 7.08, WI Adm. Code)

(a) CORNER LOCATION  
SOUTHEAST 1/4 CORNER OF  
SECTION 30, TOWNSHIP 36  
NORTH, RANGE 13 EST OF THE  
4TH PM CITY OF CRANDON,  
COUNTY OF FOREST

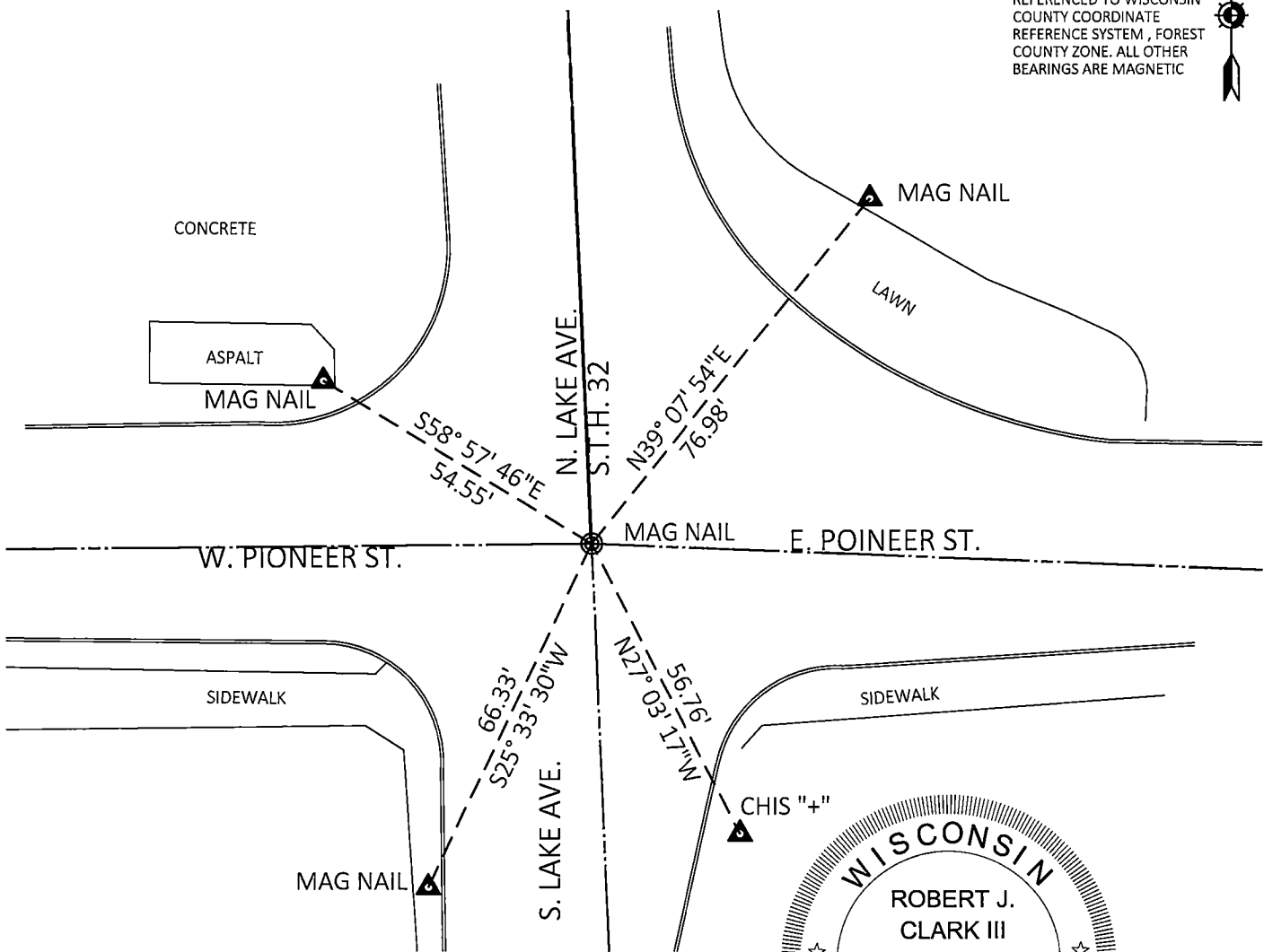
WISCORS - FOREST COUNTY  
N: 568,606.80 US ft  
E: 835,948.53 US ft  
Datum: NAD83 (2011)  
GNSS METHOD rtn - Direct  
GNSS Control WISCORS VRS



History of original corner establishment and subsequent restorations and description of any record, monument, occupational, testimonial or other evidence considered:

- 1865 - ORIGINAL SURVEY BY JAMES L. NOWLIN JUNE 2- JUNE 12, 1865.  
SUGAR 15 N29W 20 LKS, SUGAR 12 N77E 30 LKS
- 1972 - THOMAS R. ARNOTT, S-887 STATES R.R. SPIKE FOUND. LEFT R.R. SPIKE. SET PK NAIL IN ISLAND SURFACE N61E 31.05 FEET, PK NAIL IN POWER POLE S26E 61.25 FEET, CHISELED X IN SIDEWALK S46W 34.60 FEET, CHISELED X IN SIDEWALK N52W 36.91 FEET
- 2002, SEPTEMBER 25-SURVEYOR 1641-JAMES H. MOORE, FOUND ABOVE MONUMENT AS RECORDED AT FOREST COUNTY REGISTER OF DEEDS, NOVEMBER 1976, DOCUMENT NUMBER 110646, INDEX NUMBER V5, MONUMENT SUBSEQUENTLY DESTROYED BY CONSTRUCTION REPLACED SEPTEMBER 2002 AS FOLLOWS: SET MAGNAIL: 568,607.07 E 835,948.52 WISCONSIN COUNTY COORDINATE SYSTEM "FOREST COUNTY". SET REFERENCE MONUMENTS: N59°51'08"W 52.43', S37°27'29"E 51.42', N60°54'37"E 65.87', S50°12'05"W 43.06'
- 2003, MARCH 18-SURVEYOR 1641-JAMES H. MOORE REFILES MONUMENT RECORD DUPLICATE OF ABOVE, WITH COUNTY NAME CHANGED FROM MARINETTE TO FOREST.
- 2021, JULY 2-JEFFREY DEMUTH FOUND MINI-MAG NAIL AT THE INTERSECTION OF SOUTH LAKE AVE AND PIONEER STREET, AND A BENT -3/4" DIAMETER IRON ROD, NEAR THE NW REFERENCE MONUMENT FROM JAMES MOORE. MOORE MEASURED N59°51'08"W, 52.43'. HE MEASURED N59°24'22"W, 52.56'. ALL OTHER WITNESS ARE LOST. HE ACCEPTED THE MINI-MAG NAIL, AND THE 3/4" IRON ROD AS THE BEST EVIDENCE OF THE SECTION CORNER, AND NEW WITNESSES, SET MAGNAIL S25°24'09"W 66.34', SET MAGNAIL N58°54'39"W 54.58', SET MAGNAIL N39°12'59"E 76.94', SET MAGNAIL S27°04'28"E 56.84'.
- 2024, SEPTEMBER 4-I FOUND ALL 3 EXISTING TIES AS NOTED FROM PREVIOUS MONUMENT RECORD BY DEMUTH. THE MAGNAIL AT CORNER LOCATION WAS DESTROYED FROM ROAD CONSTRUCTION. RESET MAGNAIL AT CORNER LOCATION AND 1 NEW WITNESS AS SHOWN BELOW.

BEARINGS LISTED TO THE NEAREST SECOND ARE REFERENCED TO WISCONSIN COUNTY COORDINATE REFERENCE SYSTEM, FOREST COUNTY ZONE. ALL OTHER BEARINGS ARE MAGNETIC



I, Robert J. Clark III, certify that the CORNER LOCATION shown on this record was determined by me or under my direction and control and that this U.S. Public Land Survey Monument Record is correct and complete to the best of my knowledge and belief.

Robert J. Clark III  
Signature

9/04/2024  
Date



43613360000

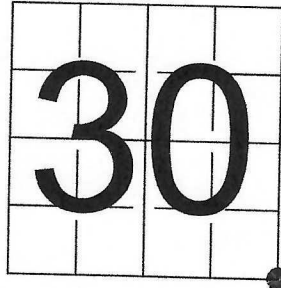
V5

U S PUBLIC LAND SURVEY MONUMENT RECORD

NOTE: This form is intended and designed to fulfill all requirements of Wisconsin Administrative Code, Chapter A-E 7.08 U.S. Public Land Survey Monument Record (3) (a-i)

(a) CORNER LOCATION  
SOUTHEAST CORNER OF SECTION 30  
TOWNSHIP 36 NORTH  
RANGE 13 EAST OF THE 4TH PM  
CITY OF CRANDON  
COUNTY OF FOREST

WISCRS - FOREST COUNTY  
N: 568,606.80 USft  
E: 835,948.53 USft  
Datum: NAD83 (2011)  
GNSS Method RTN - Direct  
GNSS Control WISCORS VRS



(b) HISTORY OF ORIGINAL CORNER ESTABLISHMENT

Original Surveyor: JAMES L. NOWLIN

Original Accessories:

SUGAR 15 N29W. 20LKS  
SUGAR 12 N77E. 30"

Date of Survey

Commenced: JUNE 2, 1865  
Completed: JUNE 12, 1865

See previous USPLS Monument Record  
INDEX NO. V-5 - DOCUMENT NO. 110646, 176810 & 178829  
43613300000

(f)(g)(h) Description of monument found at this corner and if it was accepted, state all evidence (material, testimonial, occupational, plats, records, other monuments) used as a basis for accepting. If not accepted or if nothing was found, state evidence used as basis for establishing location. If re-established through lost corner proportionate methods, indicate all monuments, distances and directions used to establish. Indicate type of monument and sign post found or set.

OCTOBER 31, 1972 - SURVEYOR 887 - THOMAS R. ARNOTT STATES R.R. SPIKE FOUND. LEFT R.R. SPIKE

SET THE FOLLOWING ACCESSORIES:

P.K. NAIL IN ISLAND SURFACE  
P.K. NAIL IN POWER POLE

N61E  
S26E

31.05 FEET  
61.25 FEET

CHISELED X IN SIDEWALK  
CHISELED X IN SIDEWALK

S46W  
N52W

34.60 FEET  
36.91 FEET

SEPTEMBER 25, 2002 - SURVEYOR 1641 - JAMES H. MOORE

"FOUND ABOVE MONUMENT AS RECORDED AT FOREST COUNTY REGISTER OF DEEDS, NOVEMBER 1976, DOCUMENT NUMBER 110646, INDEX NUMBER V5. MONUMENT SUBSEQUENTLY DESTROYED BY CONSTRUCTION REPLACED SEPTEMBER 2002 AS FOLLOWS:

SET MAG NAIL: N 568,607.07 E 835,948.52 WISCONSIN COUNTY COORDINATE SYSTEM "FOREST COUNTY"

SET THE FOLLOWING ACCESSORIES:

REFERENCE MONUMENT N59°51'08"W 52.43'  
REFERENCE MONUMENT N60°54'37"E 65.87'

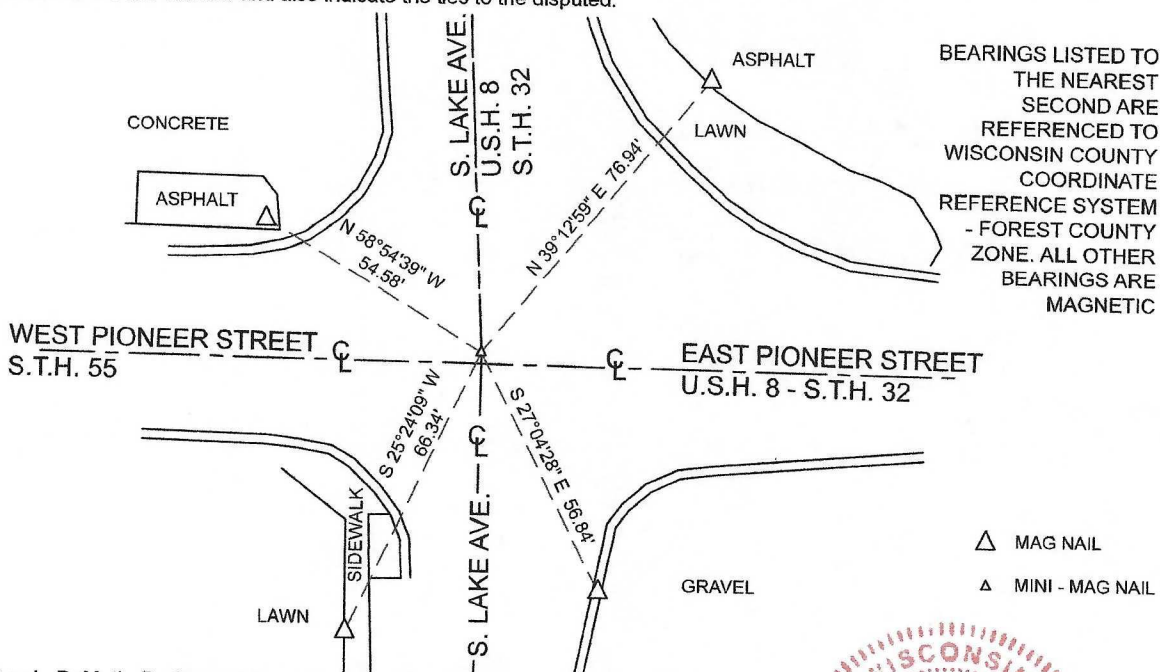
REFERENCE MONUMENT S37°27'29"E 51.42'  
REFERENCE MONUMENT S50°12'05"W 43.06'

MARCH 18, 2003 - SURVEYOR 1641 - JAMES H. MOORE - REFILES MONUMENT RECORD - DUPLICATE OF ABOVE, WITH COUNTY NAME CHANGED FROM MARINETTE TO FOREST.

JULY 21, 2021 - I FOUND A MINI-MAG NAIL AT THE INTERSECTION OF SOUTH LAKE AVE AND PIONEER STREET, AND A BENT - 3/4" DIAMETER IRON ROD, NEAR THE NW REFERENCE MONUMENT FROM JAMES MOORE. MOORE MEASURED N59°51'08"W, 52.43'. I MEASURED N59°24'22"W, 52.56'. ALL OTHER WITNESSES ARE LOST. I ACCEPTED THE MINI-MAG NAIL, AND THE 3/4" IRON ROD AS THE THE BEST EVIDENCE OF THE SECTION CORNER, AND MADE NEW WITNESSES AS SHOWN BELOW.

The coordinate value shown has been verified by at least one of the following methods: 1) comparison to a previously GPS determined published value; 2) the value is the average of two or more GPS observations at a markedly different time; 3) one or more distances were measured back to the GPS observed corner from temporary GPS observed offset locations.

(c)(d)(e) Plan view of corner with ties to at least 4 witness monuments. If in disagreement with previously established corner, show the distances between the two corners and also indicate the ties to the disputed.



(i) I, Jeffrey L. DeMuth, Professional Land Surveyor No. S-2656, hereby certify that the corner location on this record was determined by me or under my direction and control and that this U.S. Public Land Survey Monument Record is correct and complete to the best of my knowledge, and belief

February 2, 2022  
DATE



43613300000

Document Number

178829

REGISTER'S OFFICE  
Forest County, Wis.  
Received for record this 18<sup>th</sup> day  
of March A.D., 2003 at  
11:15 o'clock A.M. and recorded  
in Vol. Corner Restoration  
page V-5  
Kay Swanson, Deputy  
Register of Deeds

## U.S. PUBLIC LAND SURVEY MONUMENT RECORD

(AS REQUIRED BY S. A-E 5.02, WI ADM. CODE)

HISTORY OF ORIGINAL CORNER ESTABLISHMENT AND SUBSEQUENT RESTORATIONS AND DESCRIPTION OF ANY RECORD, MONUMENT, OCCUPATIONAL, TESTIMONIAL, OR OTHER EVIDENCE CONSIDERED:

1865 - ORIGINAL SURVEY BY JAMES L. NOWLIN JUNE 2 - JUNE 12, 1865.  
SUGAR 15" N29°W 20 LINKS  
SUGAR 20" N77°E 30 LINKS

1972 - THOMAS R. ARNOTT, S-887 STATES IN CERTIFIED LAND CORNER RESTORATION FORM, R.R. SPIKE FOUND

LEFT R.R. SPIKE

TIES:

P.K. NAIL IN ISLAND SURFACE	N81°E	31.05 FEET
P.K. IN POWERPOLE	S28°E	61.25 FEET
CHISLED X IN SIDEWALK	S46°W	34.60 FEET
CHISLED X IN SIDEWALK	N52°W	36.91 FEET

CORNER WAS: (CHECK ALL THAT APPLY)

☐ RESTORED THROUGH ACCEPTANCE OF AN OBLITERATED LOCATION

☒ RESTORED THROUGH ACCEPTANCE OF A FOUND PERPETUATED LOCATION

☐ CONSIDERED A LOST CORNER AND REESTABLISHED THROUGH LOST CORNER PROPORTIONATE METHODS (INCLUDING A PLAN VIEW DRAWING SHOWING DISTANCES AND DIRECTIONS TO OTHER PUBLIC LAND SURVEY CORNERS USED FOR PROPORTIONING AND DETERMINING THE CORNER LOCATION)

☐ RESTORED OF REESTABLISHED IN A LOCATION THAT DIFFERS FROM A PREVIOUS RESTORATION OF REESTABLISHMENT (INCLUDE A PLAN VIEW DRAWING AND INDICATE WHAT WAS SET AND/OR FOUND)

DESCRIBE THE MONUMENT AND ACCESSORIES USED TO PERPETUATE THE LOCATION OF THIS CORNER. (INCLUDE A PLAN VIEW DRAWING AND INDICATE WHAT WAS SET AND/OR FOUND)

FOUND ABOVE MONUMENT AS RECORDED AT FOREST COUNTY REGISTER OF DEEDS, NOVEMBER 1976, DOCUMENT NUMBER 110646, INDEX NUMBER V5. MONUMENT SUBSEQUENTLY DESTROYED BY CONSTRUCTION REPLACED SEPTEMBER 2002 AS FOLLOWS:

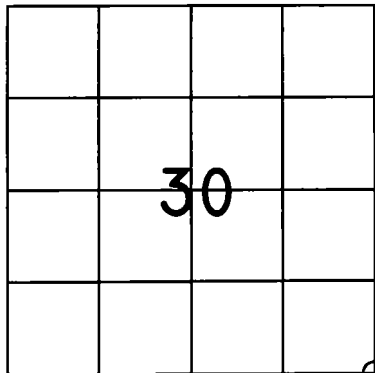
SET MAG NAIL: N 568,607.07 E 835,948.52 WISCONSIN COUNTY COORDINATE SYSTEM "FOREST COUNTY"

SET THE FOLLOWING ACCESSORIES:

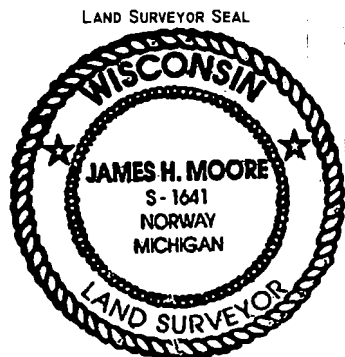
REFERENCE MONUMENT	N59°51'06"W	52.43'
REFERENCE MONUMENT	N60°54'37"E	65.87'
REFERENCE MONUMENT	S37°27'29"E	51.42'
REFERENCE MONUMENT	S50°12'05"W	43.06'



THE SOUTHEAST  
CORNER OF SECTION 30,  
T. 36 N., R. 13 E.,  
FOURTH PRINCIPAL MERIDIAN,  
FOREST COUNTY, WISCONSIN



⊕ = LOCATION OF CORNER



REFERENCE  
MONUMENT

SET MAG NAIL

REFERENCE  
MONUMENT

REFERENCE  
MONUMENT

REFERENCE  
MONUMENT

I, JAMES H. MOORE

(TYPE OR PRINT NAME) CERTIFY THAT THE CORNER LOCATION SHOWN ON THIS ABOVE RECORD WAS DETERMINED BY ME OR UNDER MY DIRECTION AND CONTROL AND THAT THIS U.S. PUBLIC LAND SURVEY MONUMENT RECORD IS CORRECT AND COMPLETE TO THE BEST OF MY KNOWLEDGE AND BELIEF.

SIGNATURE

DATE

INDEX No. V-5

43613300000

V-5

Document Number

176810

REGISTER'S OFFICE  
Forest County, Wis.

Received for record this 27<sup>th</sup> day  
of September A.D., 2002 at  
9:00 o'clock A.M. and recorded  
in Vol. Corner Restoration  
page V-5

Kay Swanson, Deputy  
Register of Deeds

U.S. PUBLIC LAND SURVEY MONUMENT RECORD

(AS REQUIRED BY S. A-E 5.02, WI ADM. CODE)

HISTORY OF ORIGINAL CORNER ESTABLISHMENT AND SUBSEQUENT RESTORATIONS AND DESCRIPTION OF ANY RECORD, MONUMENT, OCCUPATIONAL, TESTIMONIAL, OR OTHER EVIDENCE CONSIDERED:

1885 - ORIGINAL SURVEY BY JAMES L. NOWLIN JUNE 2 - JUNE 12, 1885.  
SUGAR 15" N28°W 20 LINKS  
SUGAR 20" N77°E 30 LINKS

1972 - THOMAS R. ARNOTT, S-887 STATES IN CERTIFIED LAND CORNER RESTORATION FORM, R.R. SPIKE FOUND

LEFT R.R. SPIKE

TIES:

P.K. NAIL IN ISLAND SURFACE	N81°E	31.05 FEET
P.K. IN POWERPOLE	S26°E	81.25 FEET
CHISLED X IN SIDEWALK	S48°W	34.80 FEET
CHISLED X IN SIDEWALK	N52°W	38.91 FEET

CORNER WAS: (CHECK ALL THAT APPLY)

☐ RESTORED THROUGH ACCEPTANCE OF AN OBLITERATED LOCATION

☒ RESTORED THROUGH ACCEPTANCE OF A FOUND PERPETUATED LOCATION

☐ CONSIDERED A LOST CORNER AND REESTABLISHED THROUGH LOST CORNER PROPORTIONATE METHODS (INCLUDING A PLAN VIEW DRAWING SHOWING DISTANCES AND DIRECTIONS TO OTHER PUBLIC LAND SURVEY CORNERS USED FOR PROPORTIONING AND DETERMINING THE CORNER LOCATION)

☐ RESTORED OF REESTABLISHED IN A LOCATION THAT DIFFERS FROM A PREVIOUS RESTORATION OF REESTABLISHMENT (INCLUDE A PLAN VIEW DRAWING AND INDICATE WHAT WAS SET AND/OR FOUND)

DESCRIBE THE MONUMENT AND ACCESSORIES USED TO PERPETUATE THE LOCATION OF THIS CORNER. (INCLUDE A PLAN VIEW DRAWING AND INDICATE WHAT WAS SET AND/OR FOUND)

FOUND ABOVE MONUMENT AS RECORDED AT FOREST COUNTY REGISTER OF DEEDS, NOVEMBER 1976, DOCUMENT NUMBER 110646, INDEX NUMBER VS. MONUMENT SUBSEQUENTLY DESTROYED BY CONSTRUCTION REPLACED SEPTEMBER 2002 AS FOLLOWS:

SET MAG NAIL: N 568,607.07 E 835,948.52 WISCONSIN COUNTY COORDINATE SYSTEM "FOREST COUNTY"

SET THE FOLLOWING ACCESSORIES:

REFERENCE MONUMENT	N59°51'06"W	52.43'
REFERENCE MONUMENT	N60°54'37"E	65.87'
REFERENCE MONUMENT	S37°27'29"E	51.42'
REFERENCE MONUMENT	S50°12'05"W	43.06'

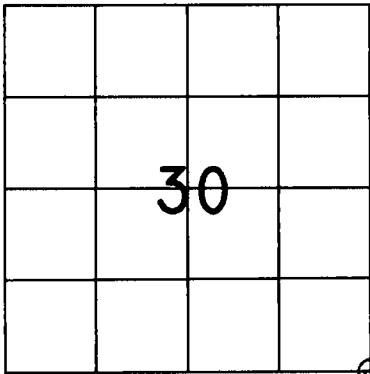
THE SOUTHEAST

CORNER OF SECTION 30

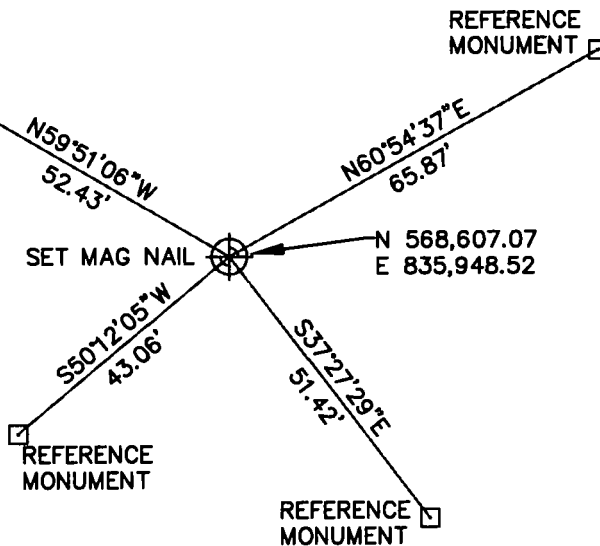
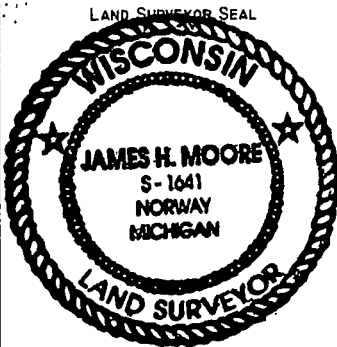
T. 36 N., R. 13 E.,

FOURTH PRINCIPAL MERIDIAN,

MARINETTE COUNTY, WISCONSIN



⊕ = LOCATION OF CORNER



I, JAMES H. MOORE

(TYPE OR PRINT NAME) CERTIFY THAT THE CORNER LOCATION SHOWN ON THIS ABOVE RECORD WAS DETERMINED BY ME OR UNDER MY DIRECTION AND CONTROL AND THAT THIS U.S. PUBLIC LAND SURVEY MONUMENT RECORD IS CORRECT AND COMPLETE TO THE BEST OF MY KNOWLEDGE AND BELIEF.

INDEX No. V-5

SIGNATURE

DATE

9-25-02

4361330 0000

V-5

CERTIFIED LAND CORNER RESTORATION

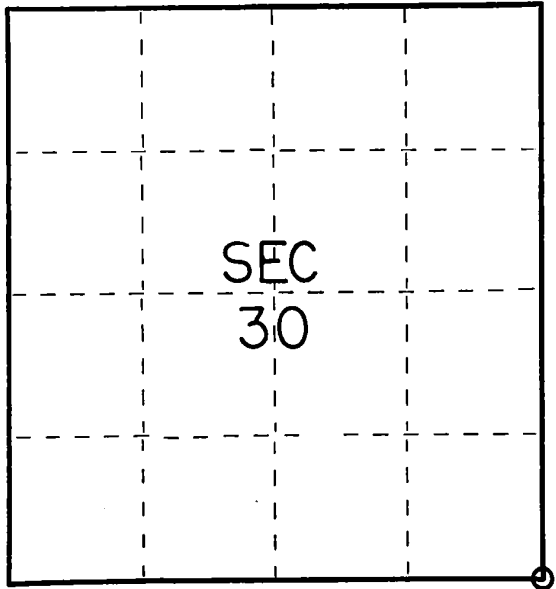
Index No. **V-5**

State of Wisconsin }  
County of Forest } ss.

I Thomas R. Arnott, do hereby  
certify that on the 31 day  
of Oct., 1972, I found  
evidence of the section  
corner of sec. 29, 30, 31 & 32  
Township 36, North, Range  
13 E, Fourth Principal Meridian,  
as described hereon; and that from this evidence  
I established a new monument and accessories  
as described hereon to perpetuate the original  
location of this corner.

Resident witnesses:  
\_\_\_\_\_  
\_\_\_\_\_  
\_\_\_\_\_

FORM 985 R. C. MILLER CO., MILWAUKEE



○ = Corner monument restored.

History of original corner establishment:

Original survey by James L. Nowlin June 2 - June 12, 1865.

Sugar	15	N29W	20 Lks.
Sugar	12	N77E	30 Lks.

Description of corner evidence found:

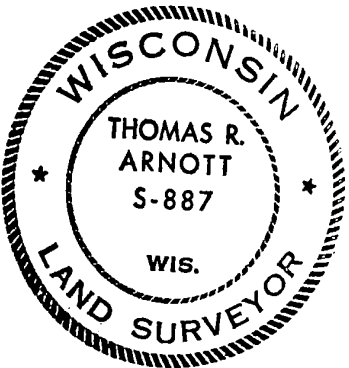
R.R. Spike found

Description of monument and accessories I established to perpetuate the original location of this corner.

Left R.R. Spike

Ties:

P.K. Nail in island surface	N61E	31.05 feet
P.K. in power pole	S26E	61.25 feet
Chisled X in sidewalk	S46W	34.60 feet
Chisled X in sidewalk	N52W	36.91 feet



43613300000

Dated at Crandon, Wis., this 30 day of Nov., 1976.

Signature Thomas Arnott Title Surveyor Registration No S-887  
(County Surveyor, Registered Land Surveyor, or other duly authorized official)

Office of Register of Deeds, County of Forest, I hereby certify that the within  
instrument was filed in this office for record on the 30 day of Nov., 1976.  
at 11:30 o'clock A M.

Eugene Stetson Document Number **110646**  
(Register of Deeds)

By \_\_\_\_\_ Deputy