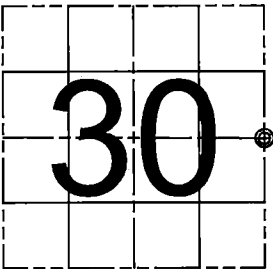


U S PUBLIC LAND SURVEY MONUMENT RECORD

(As Required By s. A-E 7.08, WI Adm. Code)

(a) CORNER LOCATION
EAST 1/4 CORNER OF SECTION 30,
TOWNSHIP 36 NORTH, RANGE 13
EST OF THE 4TH PM CITY OF
CRANDON, COUNTY OF FOREST

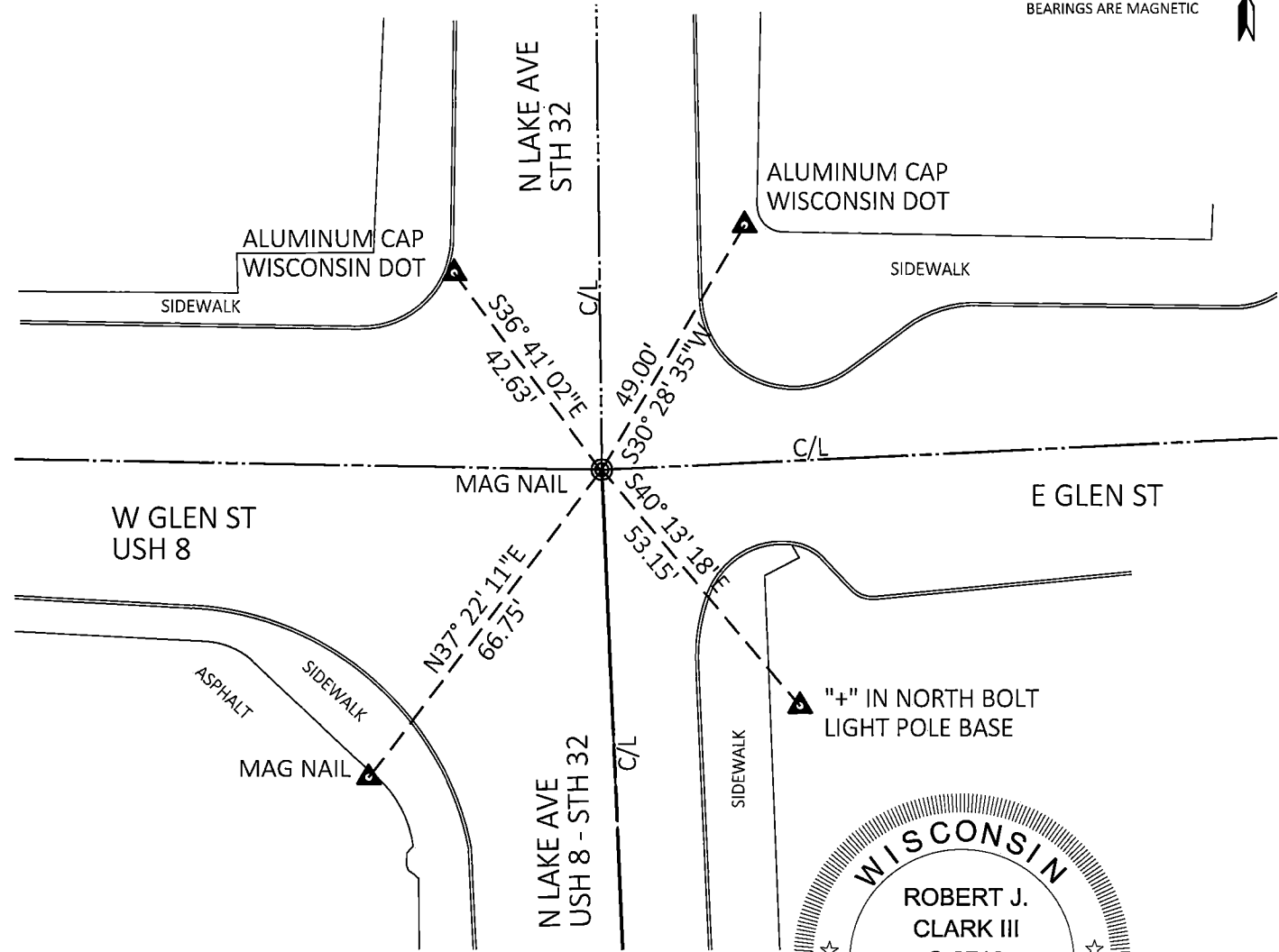
WISCRS - FOREST COUNTY
N: 571,266.71 US ft
E: 835,834.06 US ft
Datum: NAD83 (2011)
GNSS METHOD rtn - Direct
GNSS Control WISCRS VRS



History of original corner establishment and subsequent restorations and description of any record, monument, occupational, testimonial or other evidence considered:

- 1865-ORIGINAL SURVEY BY JAMES L. NOWLIN JUNE 2- JUNE 12, 1865.
SUGAR 15 S16W 12 LKS, BIRCH 20 N34E 45 LKS
- 1972-THOMAS R. ARNOTT, S-887 FOUND "BRASS CAP IN CONCRETE SET BY HIGHWAY DEPARTMENT 1971...PK NAIL AND REPLACED THAT WITH R.R. SPIKE. LEFT BRASS CAP." SET CHISELED X IN SIDEWALK N46E 42.48 FEET, MAG. ALUM. MON. S56E 48.94 FEET, MAG. ALUM. MON. S18W 102.10 FEET, SE COR. TAVERN N42W 49.90 FEET.
- 2002, SEPTEMBER 25-SURVEYOR 1641-JAMES H. MOORE, FOUND ABOVE MONUMENT AS RECORDED AT FOREST COUNTY REGISTER OF DEEDS, NOVEMBER 1976, DOCUMENT NUMBER 110644, INDEX NUMBER T5, MONUMENT SUBSEQUENTLY DESTROYED BY CONSTRUCTION REPLACED SEPTEMBER 2002 AS FOLLOWS: SET MAGNAIL: 571,266.72 E 835,833.92 WISCONSIN COUNTY COORDINATE SYSTEM "FOREST COUNTY". SET REFERENCE MONUMENTS: N37°02'54"W 42.61', S61°23'40"E 41.78', N30°26'57"E 49.05', S23°16'49"W 72.68'
- 2003, MARCH 18-SURVEYOR 1641-JAMES H. MOORE REFILES MONUMENT RECORD DUPLICATE OF ABOVE, WITH COUNTY NAME CHANGED FROM MARINETTE TO FOREST.
- 2021, JULY 2-JEFFREY DEMUTH FOUND 2 WISDOT WITNESS MONUMENTS AND STANDARD SIZE MAGNAIL, ACCEPTED THE MAGNAIL AND WITNESSES AS THE BEST EVIDENCE OF THE 1/4 CORNER, AND SET MAGNAIL S37°24'17"W 66.81', "+" IN NORTH BOLT OF LIGHT POLE BASE S40°09'31"E 53.09'.
- 2024, SEPTEMBER 4-I FOUND ALL 4 EXISTING TIES AS NOTED FROM PREVIOUS MONUMENT RECORD BY DEMUTH. THE MAGNAIL AT CORNER LOCATION WAS DESTROYED FROM ROAD CONSTRUCTION. RESET MAGNAIL AS SHOWN BELOW.

BEARINGS LISTED TO THE NEAREST SECOND ARE REFERENCED TO WISCONSIN COUNTY COORDINATE REFERENCE SYSTEM, FOREST COUNTY ZONE. ALL OTHER BEARINGS ARE MAGNETIC



I, Robert J. Clark III, certify that the CORNER LOCATION shown on this record was determined by me or under my direction and control and that this U.S. Public Land Survey Monument Record is correct and complete to the best of my knowledge and belief.

Robert J. Clark III
Signature

9/04/2024
Date



43613302000

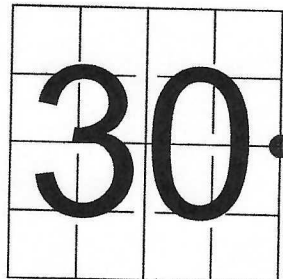
75

U S PUBLIC LAND SURVEY MONUMENT RECORD

NOTE: This form is intended and designed to fulfill all requirements of Wisconsin Administrative Code, Chapter A-E 7.08 U.S. Public Land Survey Monument Record (3) (a-i)

(a) CORNER LOCATION
EAST 1/4 CORNER OF SECTION 30
TOWNSHIP 36 NORTH
RANGE 13 EAST OF THE 4TH PM
CITY OF CRANDON
COUNTY OF FOREST

WISCRS - FOREST COUNTY
N: 571,266.71 USft
E: 835,834.06 USft
Datum: NAD83 (2011)
GNSS Method RTN - Direct
GNSS Control WISCORS VRS



(b) HISTORY OF ORIGINAL CORNER ESTABLISHMENT

Original Surveyor: JAMES L. NOWLIN

Original Accessories:

SUGAR 15 S16W. 12LKS
BIRCH 20 N34E. 45 "

Date of Survey

Commenced: JUNE 2, 1865
Completed: JUNE 12, 1865

See previous USPLS Monument Record

INDEX NO. T-5 - DOCUMENT NO. 110644, 176809 & 178830
43613302000

(f)(g)(h) Description of monument found at this corner and if it was accepted, state all evidence (material, testimonial, occupational, plats, records, other monuments) used as a basis for accepting. If not accepted or if nothing was found, state evidence used as basis for establishing location. If re-established through lost corner proportionate methods, indicate all monuments, distances and directions used to establish. Indicate type of monument and sign post found or set.

OCTOBER 31, 1972 - SURVEYOR 887 - THOMAS R. ARNOTT FOUND "BRASS CAP IN CONCRETE SET BY HIGHWAY DEPARTMENT 1971...P.K. NAIL AND REPLACED THAT WITH R.R. SPIKE. LEFT BRASS CAP."

SET THE FOLLOWING ACCESSORIES:

CHISELED X IN SIDEWALK
MAG. ALUM. MON.

N46E
S18W

42.48 FEET
102.10 FEET

MAG. ALUM. MON. S56E
SE COR. TAVERN N42W

48.94 FEET
49.90 FEET

SEPTEMBER 25, 2002 - SURVEYOR 1641 - JAMES H. MOORE

"FOUND ABOVE MONUMENT AS RECORDED AT FOREST COUNTY REGISTER OF DEEDS, NOVEMBER 1976, DOCUMENT NUMBER 110644, INDEX NUMBER T5, MONUMENT SUBSEQUENTLY DESTROYED BY CONSTRUCTION REPLACED SEPTEMBER 2002 AS FOLLOWS:

SET MAG NAIL: N 571,266.72 E 853,833.92 WISCONSIN COUNTY COORDINATE SYSTEM "FOREST COUNTY"

SET THE FOLLOWING ACCESSORIES:

REFERENCE MONUMENT N37°02'54"W 42.61'
REFERENCE MONUMENT N30°26'57"E 49.05'

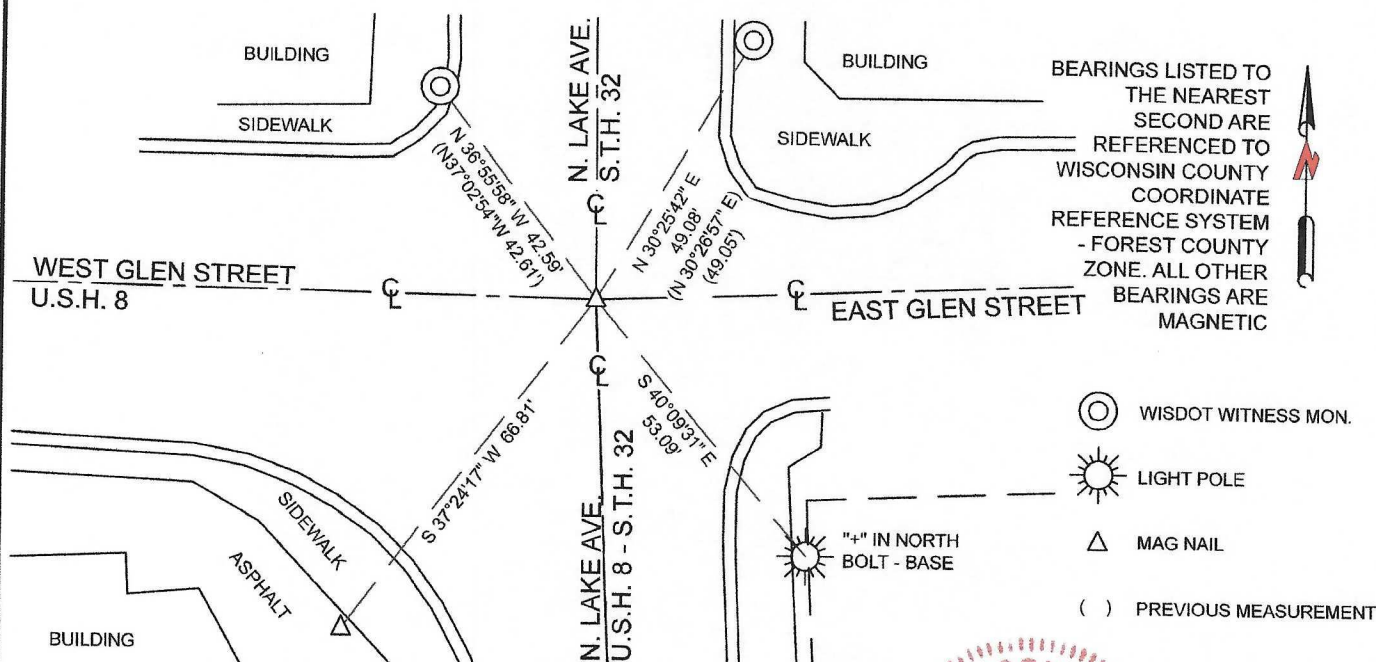
REFERENCE MONUMENT S61°23'40"E 41.78'
REFERENCE MONUMENT S23°16'49"W 72.68'

MARCH 18, 2003 - SURVEYOR 1641 - JAMES H. MOORE - REFILES MONUMENT RECORD - DUPLICATE OF ABOVE, WITH COUNTY NAME CHANGED FROM MARINETTE TO FOREST.

JULY 21, 2021 - I FOUND 2 WISDOT WITNESS MONUMENTS AND A STANDARD SIZE MAG NAIL, I ACCEPTED THE MAG NAIL AND WITNESSES AS THE THE BEST EVIDENCE OF THE 1/4 CORNER, AND MADE OR VERIFIED WITNESSES AS SHOWN BELOW.

The coordinate value shown has been verified by at least one of the following methods: 1) comparison to a previously GPS determined published value; 2) the value is the average of two or more GPS observations at a markedly different time; 3) one or more distances were measured back to the GPS observed corner from temporary GPS observed offset locations.

(c)(d)(e) Plan view of corner with ties to at least 4 witness monuments. If in disagreement with previously established corner, show the distances between the two corners and also indicate the ties to the disputed.

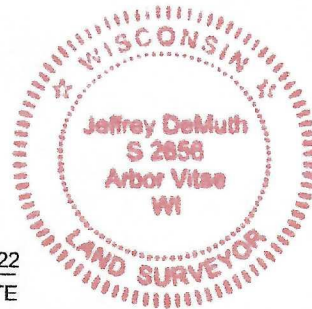


(i) I, Jeffrey L. DeMuth, Professional Land Surveyor No. S-2656, hereby certify that the corner location on this record was determined by me or under my direction and control and that this U.S. Public Land Survey Monument Record is correct and complete to the best of my knowledge, and belief

SIGNATURE

February 2, 2022

DATE



43613302000

Document Number

178830

REGISTER'S OFFICE
Forest County, Wis.
Received for record this 18th day
of March A.D., 2003 at
11:15 o'clock A.M. and recorded
in Vol. Corner Restoration
page T-5
Kay Swanson Deputy
Register of Deeds

U.S. PUBLIC LAND SURVEY MONUMENT RECORD

(AS REQUIRED BY S. A-E 5.02, WI ADM. CODE)

HISTORY OF ORIGINAL CORNER ESTABLISHMENT AND SUBSEQUENT RESTORATIONS AND DESCRIPTION OF ANY RECORD, MONUMENT, OCCUPATIONAL, TESTIMONIAL, OR OTHER EVIDENCE CONSIDERED:

1865 - ORIGINAL SURVEY BY JAMES L. NOWLIN JUNE 2 - JUNE 12, 1865.

SUGAR	15"	S18°W	12 LINKS
BIRCH	20"	N34°E	45 LINKS

1976 - THOMAS ARNOTT, S-887 STATES IN CERTIFIED LAND CORNER RESTORATION FORM, I FOUND P.K. NAIL AND REPLACED IT WITH R.R. SPIKE, HIGHWAY DEPARTMENT FOUND R.R. SPIKE AND REPLACED WITH BRASS CAP IN 1971.

LEFT BRASS CAP

TIES:

CHISELED X IN SIDEWALK	N46°E	42.48 FEET
MAG. ALUM. MON.	S56°E	48.94 FEET
MAG. ALUM. MON.	S18°W	102.10 FEET
SE COR. TAVERN	N42°W	49.90 FEET

CORNER WAS: (CHECK ALL THAT APPLY)

- ☐ RESTORED THROUGH ACCEPTANCE OF AN OBLITERATED LOCATION
- ☒ RESTORED THROUGH ACCEPTANCE OF A FOUND PERPETUATED LOCATION
- ☐ CONSIDERED A LOST CORNER AND REESTABLISHED THROUGH LOST CORNER PROPORTIONATE METHODS (INCLUDING A PLAN VIEW DRAWING SHOWING DISTANCES AND DIRECTIONS TO OTHER PUBLIC LAND SURVEY CORNERS USED FOR PROPORTIONING AND DETERMINING THE CORNER LOCATION)
- ☐ RESTORED OF REESTABLISHED IN A LOCATION THAT DIFFERS FROM A PREVIOUS RESTORATION OF REESTABLISHMENT (INCLUDE A PLAN VIEW DRAWING AND INDICATE WHAT WAS SET AND/OR FOUND)

DESCRIBE THE MONUMENT AND ACCESSORIES USED TO PERPETUATE THE LOCATION OF THIS CORNER. (INCLUDE A PLAN VIEW DRAWING AND INDICATE WHAT WAS SET AND/OR FOUND)

FOUND ABOVE MONUMENT AS RECORDED AT FOREST COUNTY REGISTER OF DEEDS, NOVEMBER 1976, DOCUMENT NUMBER 110844, INDEX NUMBER T5. MONUMENT SUBSEQUENTLY DESTROYED BY CONSTRUCTION, REPLACED SEPTEMBER 2002 AS FOLLOWS:

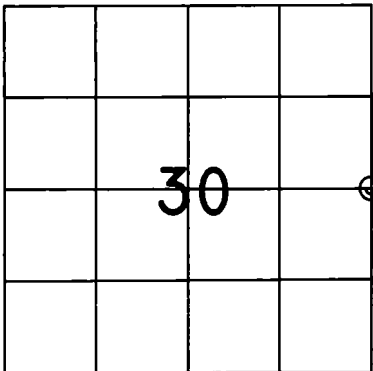
SET MAG NAIL: N 571,266.72 E 853,833.92 WISCONSIN COUNTY COORINATE SYSTEM "FOREST COUNTY"

SET THE FOLLOWING ACCESSORIES:

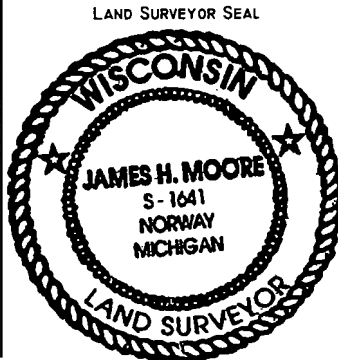
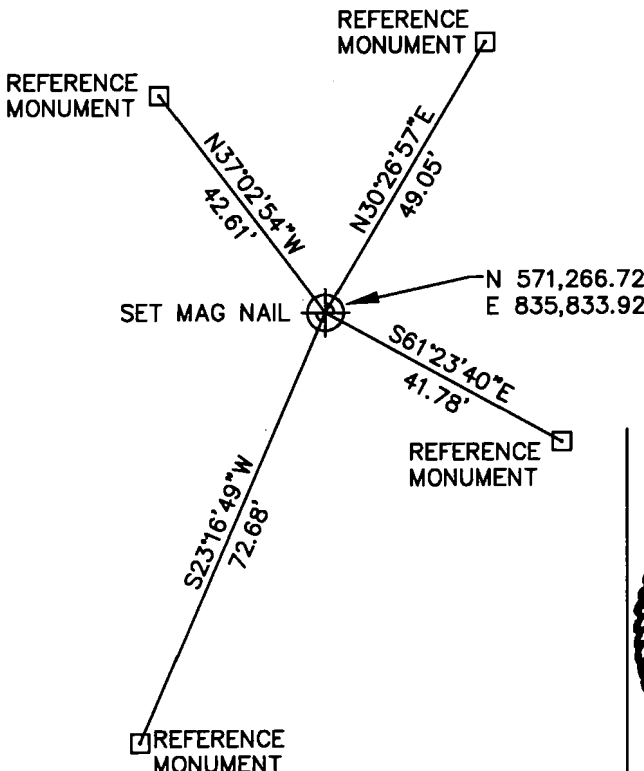
REFERENCE MONUMENT	N37°02'54"W	42.61'
REFERENCE MONUMENT	N30°26'57"E	49.05'
REFERENCE MONUMENT	S61°23'40"E	41.78'
REFERENCE MONUMENT	S23°16'49"W	72.68'



THE EAST 1/4
CORNER OF SECTION 30
T. 36 N., R. 13 E.,
FOURTH PRINCIPAL MERIDIAN,
FOREST COUNTY, WISCONSIN



⊗ = LOCATION OF CORNER



I, JAMES H. MOORE

(TYPE OR PRINT NAME) CERTIFY THAT THE CORNER LOCATION SHOWN ON THIS ABOVE RECORD WAS DETERMINED BY ME OR UNDER MY DIRECTION AND CONTROL AND THAT THIS U.S. PUBLIC LAND SURVEY MONUMENT RECORD IS CORRECT AND COMPLETE TO THE BEST OF MY KNOWLEDGE AND BELIEF.

James H. Moore 3-18-03
SIGNATURE DATE

INDEX No. T-5

43613302000

T-5

Document Number

176809

REGISTER'S OFFICE
Forest County, Wis.
Received for record this 27th day
of September A.D., 2002 at
9:00 o'clock A.M. and recorded
in Vol. Corner Restoration
page T-5

Kay Swanson Deputy
Register of Deeds

U.S. PUBLIC LAND SURVEY MONUMENT RECORD

(AS REQUIRED BY S. A-E 5.02, WI ADM. CODE)

HISTORY OF ORIGINAL CORNER ESTABLISHMENT AND SUBSEQUENT RESTORATIONS AND DESCRIPTION OF ANY RECORD, MONUMENT, OCCUPATIONAL, TESTIMONIAL, OR OTHER EVIDENCE CONSIDERED:

1885 - ORIGINAL SURVEY BY JAMES L. NOWLIN JUNE 2 - JUNE 12, 1885.

SUGAR	15"	S18°W	12 LINKS
BIRCH	20"	N34°E	45 LINKS

1976 - THOMAS ARNOTT, S-887 STATES IN CERTIFIED LAND CORNER RESTORATION FORM, I FOUND P.K. NAIL AND REPLACED IT WITH R.R. SPIKE, HIGHWAY DEPARTMENT FOUND R.R. SPIKE AND REPLACED WITH BRASS CAP IN 1971.

LEFT BRASS CAP

TIES:

CHISELED X IN SIDEWALK	N46°E	42.48 FEET
MAG. ALUM. MON.	S56°E	48.94 FEET
MAG. ALUM. MON.	S18°W	102.10 FEET
SE COR. TAVERN	N42°W	49.90 FEET

CORNER WAS: (CHECK ALL THAT APPLY)

☐ RESTORED THROUGH ACCEPTANCE OF AN OBLITERATED LOCATION

☐ RESTORED THROUGH ACCEPTANCE OF A FOUND PERPETUATED LOCATION

☐ CONSIDERED A LOST CORNER AND REESTABLISHED THROUGH LOST CORNER PROPORTIONATE METHODS (INCLUDING A PLAN VIEW DRAWING SHOWING DISTANCES AND DIRECTIONS TO OTHER PUBLIC LAND SURVEY CORNERS USED FOR PROPORTIONING AND DETERMINING THE CORNER LOCATION)

☐ RESTORED OF REESTABLISHED IN A LOCATION THAT DIFFERS FROM A PREVIOUS RESTORATION OF REESTABLISHMENT (INCLUDE A PLAN VIEW DRAWING AND INDICATE WHAT WAS SET AND/OR FOUND)

DESCRIBE THE MONUMENT AND ACCESSORIES USED TO PERPETUATE THE LOCATION OF THIS CORNER. (INCLUDE A PLAN VIEW DRAWING AND INDICATE WHAT WAS SET AND/OR FOUND)

FOUND ABOVE MONUMENT AS RECORDED AT FOREST COUNTY REGISTER OF DEEDS, NOVEMBER 1976, DOCUMENT NUMBER 110644, INDEX NUMBER T5. MONUMENT SUBSEQUENTLY DESTROYED BY CONSTRUCTION, REPLACED SEPTEMBER 2002 AS FOLLOWS:

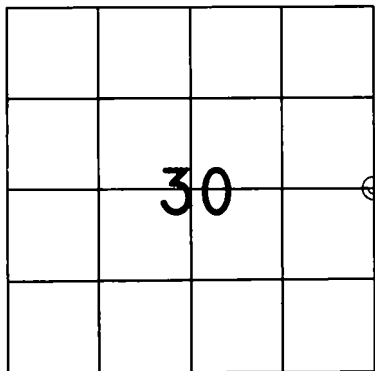
SET MAG NAIL: N 571,266.72 E 853,833.92 WISCONSIN COUNTY COORINATE SYSTEM "FOREST COUNTY"

SET THE FOLLOWING ACCESSORIES:

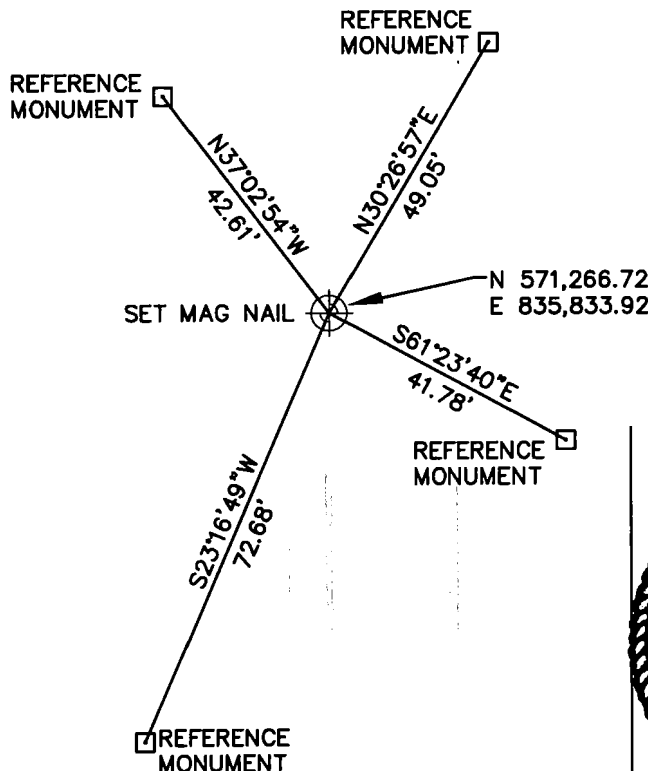
REFERENCE MONUMENT	N37°02'54"W	42.61'
REFERENCE MONUMENT	N30°26'57"E	49.05'
REFERENCE MONUMENT	S61°23'40"E	41.78'
REFERENCE MONUMENT	S23°16'49"W	72.68'



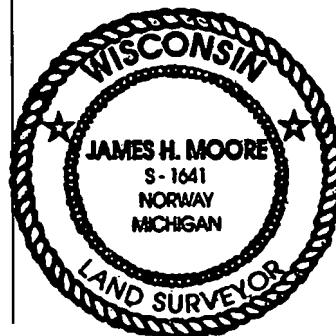
THE EAST 1/4
CORNER OF SECTION 30,
T. 36 N., R. 13 E.,
FOURTH PRINCIPAL MERIDIAN,
MARINETTE COUNTY, WISCONSIN



⊕ = LOCATION OF CORNER



LAND SURVEYOR SEAL



I, JAMES H. MOORE

(TYPE OR PRINT NAME) CERTIFY THAT THE CORNER LOCATION SHOWN ON THIS ABOVE RECORD WAS DETERMINED BY ME OR UNDER MY DIRECTION AND CONTROL AND THAT THIS U.S. PUBLIC LAND SURVEY MONUMENT RECORD IS CORRECT AND COMPLETE TO THE BEST OF MY KNOWLEDGE AND BELIEF.

James H. Moore 9-25-02
SIGNATURE DATE

INDEX No. T-5

43613302000

T-5

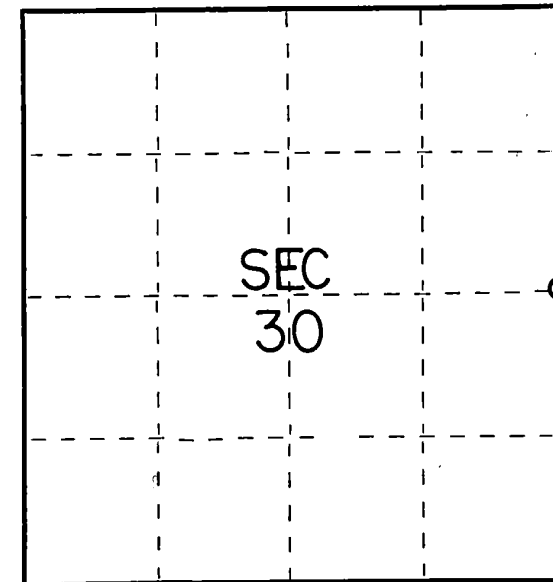
CERTIFIED LAND CORNER RESTORATION

Index No. **T 5**

State of Wisconsin }
County of Forest } ss.

I Thomas R. Arnott, do hereby
certify that on the 31 day
of Oct, 1972, I found
evidence of the 1/4
corner of sec. 30 & 29
Township 36, North, Range
13 E, Fourth Principal Meridian,
as described hereon; and that from this evidence
I established a new monument and accessories
as described hereon to perpetuate the original
location of this corner.

Resident witnesses:



○ = Corner monument restored.

History of original corner establishment:

Original survey by James L. Nowlin June 2 - June 12, 1865.

Sugar	15	S16W	12 Lks.
Birch	20	N34E	45 Lks.

Description of corner evidence found:

Brass cap in pavement set by the highway department
1971, I found P.K. nail and replaced that with R.R. Spike

Description of monument and accessories I established to perpetuate the original location of this corner.

Left brass cap

Ties:

Chiseled X in sidewalk	N46E	42.48 feet
Mag. Alum. Mon.	S56E	48.94 feet
Mag. Alum. Mon.	S18W	102.10 feet
SE Cor. Tavern	N42W	49.90 feet



Dated at Grandon, Wis., this 30 day of Nov., 1976.

Signature Thomas Arnott Title Surveyor Registration No. S-887
(County Surveyor, Registered Land Surveyor, or other duly authorized official)

Office of Register of Deeds, County of Forest, I hereby certify that the within
instrument was filed in this office for record on the 30 day of Nov., 1976
at 11:30 o'clock A. M.

Eugene Stutzman
(Register of Deeds)

Document Number **110644**

By _____ Deputy