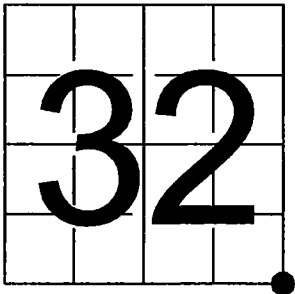


U. S. PUBLIC LAND SURVEY MONUMENT RECORD

NOTE: This form is intended and designed to fulfill all requirements of Wisconsin Administrative Code, Chapter A-E 7.08 U.S. Public Land Survey Monument Record (3) (a-i)

A-E 7.08(3)(a) Identity of corner:
Southeast Corner Section 32,
Township 36 North, Range 13 East
of the Fourth Principal Meridian,
City of Crandon, Forest County,
Wisconsin

WISCRS - FOREST COUNTY
N: 563,401.054 USft (XXX,XXX.XXX)
E: 841,429.299 USft (XXX,XXX.XXX)
Datum: NAD83 (2011)
GNSS Method RTK
GNSS Control WISCORS VRS



The coordinate value shown has been verified by the average of two or more GPS observations at a markedly different time. Coordinates shown in parenthesis are previously published values.

A-E 7.08(3)(b)

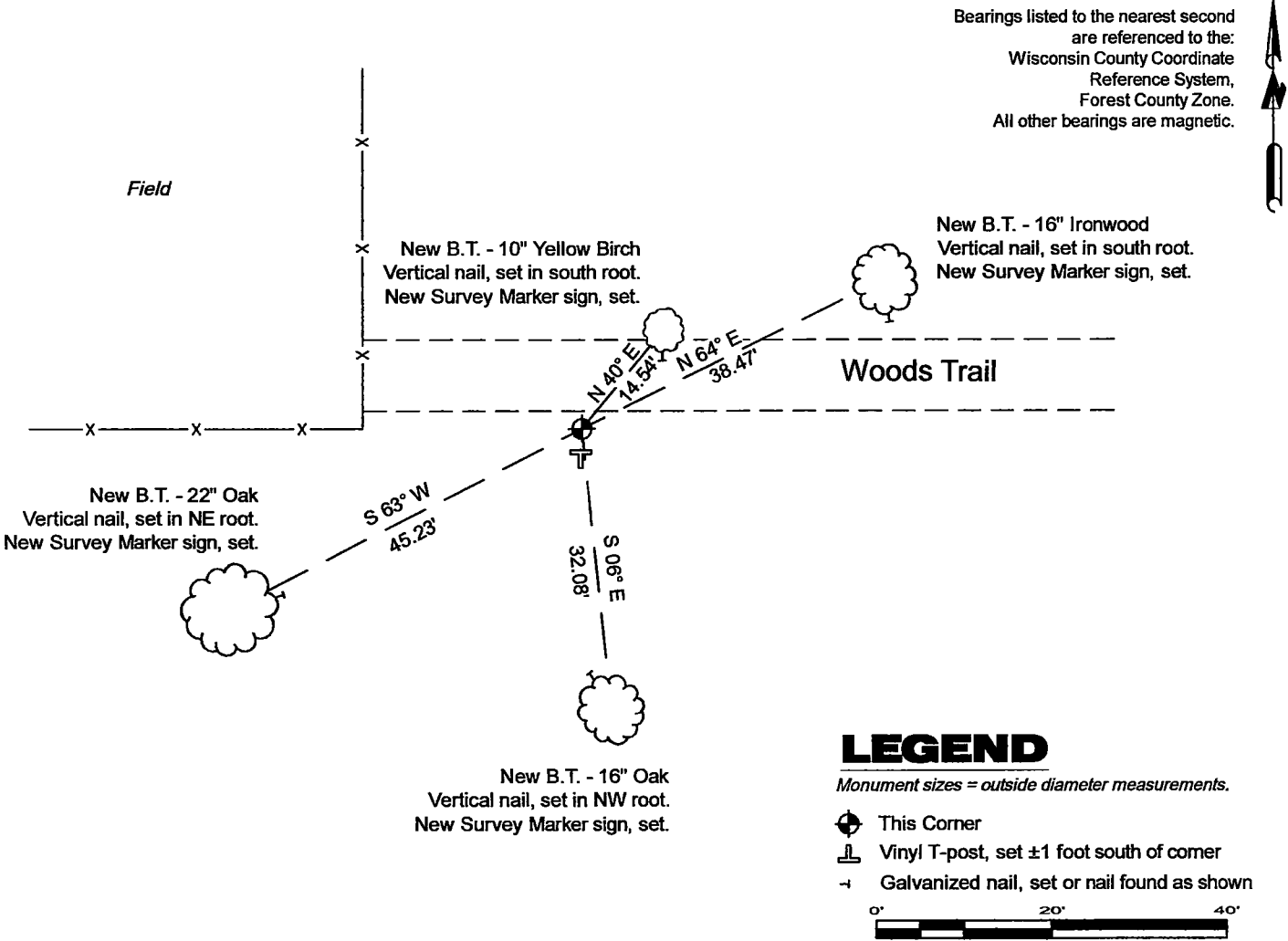
Original Surveyor: Alfred Millard - May 1858
Maple 10 - N 50° E, 22 Links, Sugar 12 - N 18° W, 35 Links, Hemlock 18 - S 15° W, 45 Links, Ironwood 11 - S 15°E, 30 Links

See Restoration of Lost Original Government Survey Corner - A9- January 12, 1965- Surveyor 463 - Neal Sperhake - THENCE:

- March 25, 2004 - Surveyor 1616 - Stephen J. Favorite - indicates this position as "4" dia. alum. mon." on county record Map #361333-20040325.

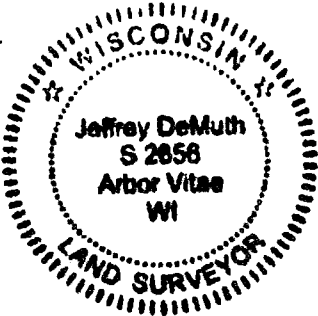
September 16, 2024 - I found a 1.3" diameter galvanized iron pipe monument, with a 4" diameter aluminum cap stamped to identify the corner location. The monument is in a rock wall, ±10' south of a woods trail and extends ±13" above grade. I did not find any of Sperhake's bearing trees. I established 4 new reference monuments as shown below.

A-E 7.08(3)(c)(d) Plan view of corner with references to at least 4 witness monuments.



A-E 7.08(3)(e) 1858 Surveyor set a post, 1965 Surveyor found an iron pipe and replaced it with a 1" diameter galvanized iron pipe with an aluminum cap, 2004 Surveyor found a 4" dia. alum. mon. I found a 1.3" diameter galvanized iron pipe monument, with a 4" diameter aluminum cap stamped to identify the corner location in 2024.
A-E 7.08(3)(f) I accept this monument in good faith as a FOUND PERPETUATED LOCATION of the corner.
A-E 7.08(3)(g)(h) This corner was not determined through lost-corner-proportionate methods.

A-E 7.08(3)(i) I, Jeffrey L. DeMuth, Professional Land Surveyor No. S-2656, hereby certify that the corner location on this record was determined by me or under my direction and control, and that this U.S. Public Land Survey Monument Record is correct and complete to the best of my knowledge, and belief.



SIGNATURE

December 31, 2024

DATE

43613320000

43613320000

A9

State of Wisconsin
County of FOREST

ss. RESTORATION OF LOST ORIGINAL GOVERNMENT SURVEY CORNER.

I NEAL SPERHAKE, do hereby certify that on the SEVENTH day of AUGUST, 19 64, I established the NORTHWEST SECTION CORNER OF SECTION 4, TOWNSHIP 35 NORTH, RANGE 13 EAST, Fourth Principal Meridian, as described hereon.

History: This corner was established during the original survey of this township, as noted in the original field notes for the original survey of T36N-R13E, 4th. p.m. A later retracement survey re-established this corner with the setting of an iron pipe as noted below. No record of this survey can be located.

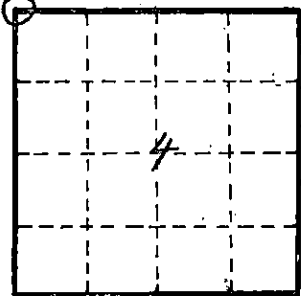
Description of monument and accessories I established to perpetuate the location of this corner:

At the point determined for the location of the corner I emplaced a:
GALVANIZED IRON PIPE, THREE FEET LONG, ONE INCH IN DIAMETER, WITH ALUMINUM CAP DENOTED AS, "KIMBERLY CLARK CORP. T35-36N 32, 33, 5, 4 R13E SPERHAKE RLS 463 8/7/64."

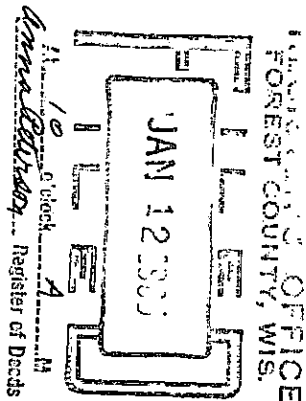
The pipe is witnessed by:

Maple 7 S 77°W 31 links. (SCRIBED S 5 NBT).
Y. Birch 7 S 42°E 26½ links. (SCRIBED S 4 NBT).

Description as to how corner was located: The meander corner between 32 and 5, and the quarter section corner between 32 and 5 had been previously located. A straight line was projected to the east between them. At exactly 39.92 chains east of the quarter corner and on the straight line projected between the two aforementioned corners, the iron pipe was located in a fence line. The farmer residing immediately north of this pipe has stated that this pipe has always been accepted as the section corner common to 32, 33, 4 and 5. The original distance between the quarter corner and this section corner was 40.00 chains. The difference of 8 links between record and actual distance is compatible with other retracement work done in this vicinity. As a further check a line was surveyed further east of the pipe. At 19.90 chains was located a north-south fence that junctioned with the existing east-west fence. This junction has been used as the west sixteenth between 33 and 4, and though it does not make a perfect mathematical proportion between the quarter between 32 and 5 and the section corner, and the section corner and the west sixteenth between 33 and 4, it is close enough to convince me that a further refinement is not necessary, and that the pipe before described either is in the exact position of the original corner, or is as close as any retracement survey lacking original evidence could place it. I have accepted the pipe as marking the corner, replaced it as noted above, rewitnessed it, and recorded it.



0 = Corner monument restored



89575

Resident witnesses _____

Dated at Crandon, Wisconsin, this 12th day of January, 19 65.

Signature Neal Sperhake

Title Registered Land Surveyor Registration No. 463

Office of Forest County of Wisconsin

I hereby certify that the within instrument was ~~filed in this~~ signed and sworn to ~~on the~~ on the 12th day of January 19 65, and was filed in Book No. 43613320000 signed and ~~Page No.~~ sworn to ~~in County Records.~~ before me.

Signature Anna Peterson Title Notary Public

43613320000

Index No. 49