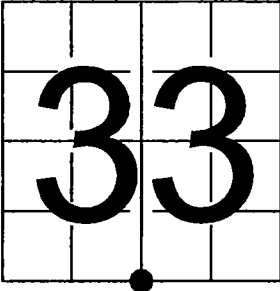


U. S. PUBLIC LAND SURVEY MONUMENT RECORD

NOTE: This form is intended and designed to fulfill all requirements of Wisconsin Administrative Code, Chapter A-E 7.08 U.S. Public Land Survey Monument Record (3) (a-i)

A-E 7.08(3)(a) Identity of corner:
South 1/4 Corner Section 33,
Township 36 North, Range 13 East
of the Fourth Principal Meridian,
City of Crandon, Forest County,
Wisconsin

WISCRS - FOREST COUNTY
N: 563,403.223 USft (XXX,XXX.XXX)
E: 844,048.128 USft (XXX,XXX.XXX)
Datum: NAD83 (2011)
GNSS Method RTK
GNSS Control WISCORS VRS



The coordinate value shown has been verified by the average of two or more GPS observations at a markedly different time. Coordinates shown in parenthesis are previously published values.

A-E 7.08(3)(b)

Original Surveyor: Alfred Millard - May 1858
W. Pine 15 - N 56° E, 3 Links, Fir 9 - S 54° W, 27 Links

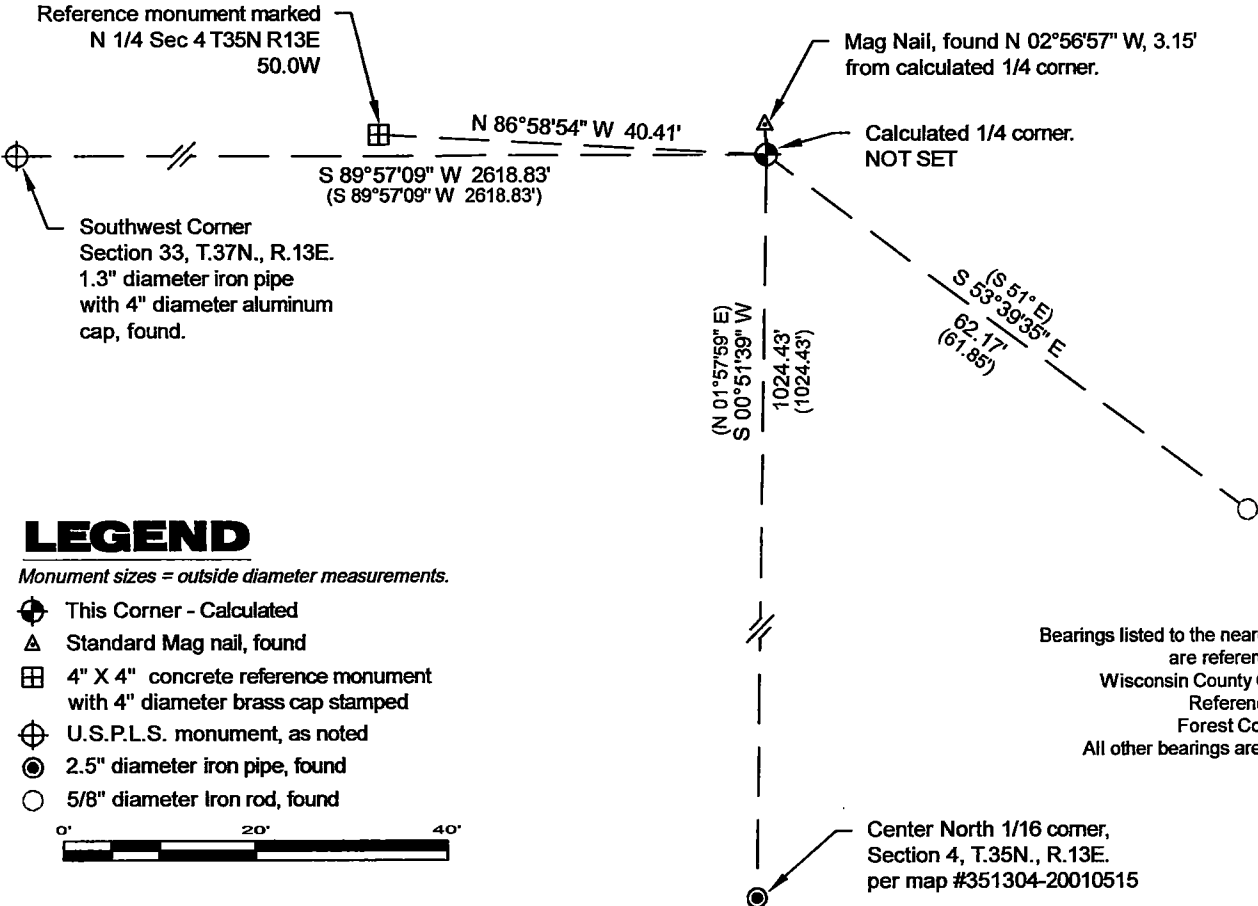
See previous U.S. Public Land Survey Monument Record - A-11 - May 15, 2001 - Surveyor 2197 - Michael A. Trembl - THENCE:

- March 25, 2004 - Surveyor 1616 - Stephen J. Favorite - indicates this position as "PK nail" on county record Map #361333-20040325.
- May 8, 2009 - Surveyor 2197 - Michael A. Trembl - indicates this position as "P.K. nail" on county record Map #361333-20090508.
- June 14, 2020 - Surveyor 3127 - James E. Anderson - indicates this position as "set Mag nail from ties" on county record Map #361333-20200614.

September 4, 2024 - I found a standard size Mag nail near the centerline of County Trunk Highway "W". I also found a 4.5"x4.5" square concrete monument with a 4 diameter brass cap stamped as being 50 feet west of the corner location, as well as 1 of Trembl's reference monuments. As the Mag nail did not agree with the measurement to the existing reference monuments, I re-established the corner 2618.83 feet east of the Southwest corner Section (Favorite) and 1024.43 feet north of the Center North 1/16th corner, Section 04 (Trembl).

I did not set a new monument. I did not set any new reference monuments as shown below. This is a calculated position for coordinates only.

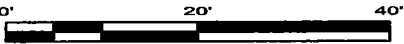
A-E 7.08(3)(c)(d) Plan view of corner with references to at least 4 witness monuments.



LEGEND

Monument sizes = outside diameter measurements.

- ⊕ This Corner - Calculated
- △ Standard Mag nail, found
- ⊞ 4" X 4" concrete reference monument with 4" diameter brass cap stamped
- ⊕ U.S.P.L.S. monument, as noted
- ⊙ 2.5" diameter iron pipe, found
- 5/8" diameter Iron rod, found



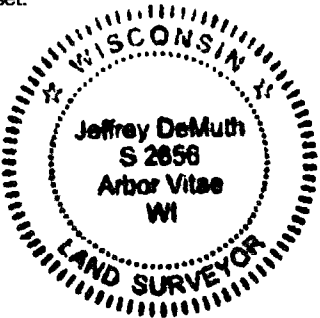
Bearings listed to the nearest second are referenced to the: Wisconsin County Coordinate Reference System, Forest County Zone. All other bearings are magnetic.



A-E 7.08(3)(e) 1858 Surveyor set a post, 2001 Surveyor set a P.K. nail, 2004 Surveyor found the same, 2020 Surveyor set a Mag nail. In 2024 I disagreed with a found Mag nail. This monument record indicates a calculated position, no monument was set.

A-E 7.08(3)(f) I accept this position in good faith as a FOUND PERPETUATED LOCATION of the corner.
A-E 7.08(3)(g)(h) This corner was not determined through lost-corner-proportionate methods.

A-E 7.08(3)(i) I, Jeffrey L. DeMuth, Professional Land Surveyor No. S-2656, hereby certify that the corner location on this record was determined by me or under my direction and control, and that this U.S. Public Land Survey Monument Record is correct and complete to the best of my knowledge, and belief.



December 31, 2024
SIGNATURE DATE

Document Number

171817

REGISTER'S OFFICE
Forest County, Wis.

Received for record this 6th day
of June A.D., 2001 at
9:50 o'clock A.M. and recorded
in Vol. Corner Restoration
page A-11

Lay Swanson, Deputy
Register of Deeds

U.S. PUBLIC LAND SURVEY MONUMENT RECORD

(As Required by WI Adm. Code)

History of original corner establishment and subsequent restorations and descriptions of any record, monument, occupational, testimonial or other evidence considered:

1858 - Alfred Millard, set original corner post and made the following B.T.'s:

W. Pine, 15", N 56° E, 3 lks.
Fir, 9", S 54° W, 27 lks.

1960's - Forest County highway plans S1363(3) of County Trunk Highway "W" indicate an iron pipe for quarter corner located at the center line of Highway "W" and East of Fence Line.

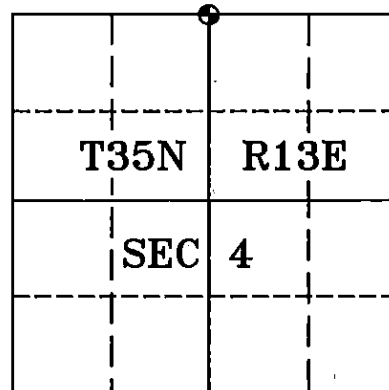
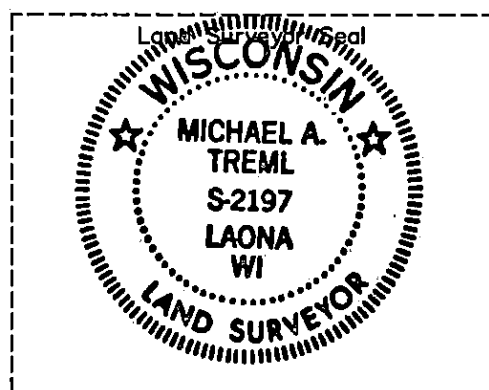
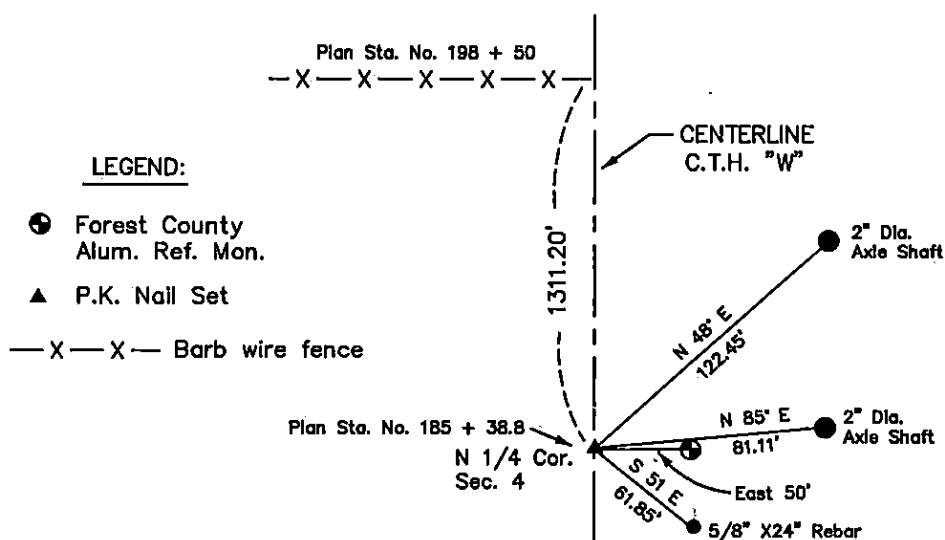
2001 - I did not find the iron pipe indicated on County Highway plans. Restored corner by using highway plan distance to old fence line North and the centerline of Highway "W".

I set a P.K. nail in blacktop for corner with Forest County Aluminum reference monument.

Corner was: (Check All That Apply)

- ☒ Restored through acceptance of an obliterated evidence location.
☐ Restored through acceptance of a found perpetuated location.
☐ Considered a lost corner and reestablished through lost corner proportionate methods (include a plan view drawing showing distances and directions to other Public Land Survey Corners used for proportioning and determining the corner location).
☐ Restored or reestablished in a location that differs from a previous restoration or reestablishment (include a plan view drawing and indicate what was set and/or found).

Describe the monument and accessories used to perpetuate the location of this corner (include a plan view drawing and indicate what was set and/or found).



I, Michael A. Trembl, RLS
(type or print name) certify that the corner location shown on this record was determined by me or under my direction and control and that this U.S. Public Land Survey Monument Record is correct and complete to the best of my knowledge and belief.

Michael A. Trembl 5/15/01
Signature Date

The North One-quarter corner of
Section 4 T. 35 N., R. 13 E.
Forest County, WI

Index No. A-11

43613330020