

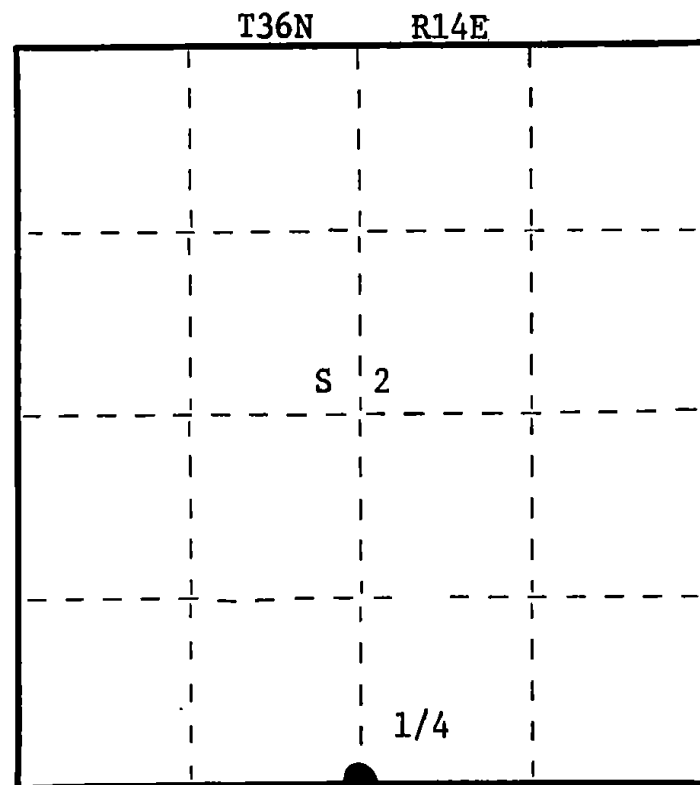
State of Wisconsin }
County of Oneida } ss.

I Glen Barker, do hereby
certify that on the 6th day
of November, 1985, I found
evidence of the Quarter
corner of Sections 2 & 11
Township 36 North, Range
14 East, Fourth Principal Meridian,
as described hereon; and that from this evidence
I established a new monument and accessories
as described hereon to perpetuate the original
location of this corner.

Resident witnesses:

N. Spiess

H. Wagoner



○ = Corner monument restored.

CERTIFIED LAND CORNER RESTORATION
U.S. PUBLIC LAND SURVEY

History of original corner establishment:

Original corner established by James McBride, deputy surveyor, in 1859, from which
Tamarack 8" bears N14W 20 links; Birch 10" S43E 70 links.

Description of corner evidence found:

Recovered two old squared cedar stakes, also three old cedar points, buried in muck
along side stakes.

Partly visible on a 14" Hemlock are initials of four men dated 1938.
Old blazed line running east.

Description of monument and accessories I established to perpetuate the original location of this corner.

Replaced old stakes and points with a 2 1/4" aluminum Forest County monument with 3"
diameter cap stamped:

Monument projects 6" above ground.

Marked NBTs:

| | | | |
|---------|-----|------|--------|
| Hemlock | 8" | N22E | 13.60' |
| Hemlock | 15" | S72E | 35.28' |
| Hemlock | 8" | S6°E | 37.72' |
| Cedar | 7" | N30W | 21.30' |

| | |
|------|-------------|
| T36N | R14E |
| 1/4 | + S2 S11 |
| | 1985 |
| | S1682 |

Dated at Rhinelander, Wis., this 23rd day of December, 1985.

Signature Glen Barker Title Registered Land Surveyor Registration No. S1682
(County Surveyor, Registered Land Surveyor, or other duly authorized official)

Office of Register of Deeds, County of Forest, I hereby certify that the within
instrument was filed in this office for record on the 1st day of May, 1986
at 10:30 o'clock A. M.

Paul Aschenbrenner
(Register of Deeds)

By Deputy

(c) Describe any material discrepancy between the location of the corner as restored or reestablished and the location of that corner as previously restored or reestablished by distance and direction. Show the discrepancy on the plan view drawing under (d), above. Show the distances between the corner as previously restored or reestablished and (1) the corner as restored or reestablished, and (2) to at least 2 of the witness monuments shown on the drawing in (d), above.

(f) Was the corner restored through acceptance of (1) an obliterated evidence location, or, (2) a found perpetuated location?

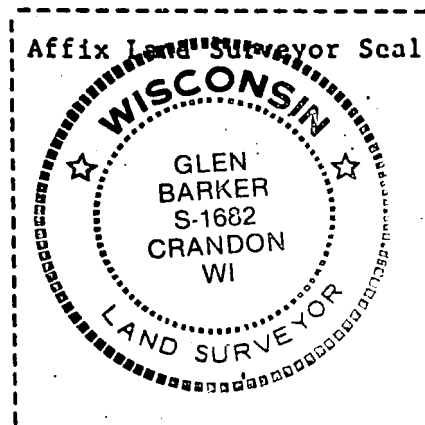
Perpetuated location

(g&h) Was the corner reestablished through lost corner proportionate methods? If so, show the method, including the directions and distances to other public land survey corners used as evidence or used for proportioning in determining the corner location?

(i) 1. Glen Barker
(type or print name) certify that the corner location shown on this record was determined by me or under my direction and control and that this U.S. Public Land Survey Monument Record is correct and complete to the best of my knowledge and belief.

Signature

Date



U.S. PUBLIC LAND SURVEY MONUMENT RECORD

Index No. E-19

State of Wisconsin }
County of Forest } ss.

I Gary L. Pisoni, do hereby
certify that on the 30th day
of August, 1994, I found
evidence of the North Quarter
corner of Section 11
Township 36, North, Range
14 East, Fourth Principal Meridian,
as described hereon; and that from this evidence
I established a new monument and accessories
as described hereon to perpetuate the original
location of this corner.

Resident witnesses:

History of original corner establishment:

Original Government Survey in 1859 by James McBride, deputy surveyor. West corrected at 39.80
chs. between Sections 2 and 11, set Quarter Section post from which the following bear: Tamarack,
8", N 14° W, 20 lks; Birch, 10", S 43° E, 70 lks.

In 1985, Glen Barker RLS, found two old squared cedar stakes and three old cedar points
buried in muck. Replaced old stakes with a 2½" dia. aluminum Forest County monument with
and aluminum cap from which the following bear:

| | | | | | |
|------------|---------|------------|-------------|---------|------------|
| Hemlock 8" | N 22° E | 13.60 feet | Hemlock 15" | S 72° E | 35.28 feet |
| Hemlock 8" | S 06° E | 37.72 feet | Cedar 7" | N 30° W | 21.30 feet |

Description of corner evidence found:

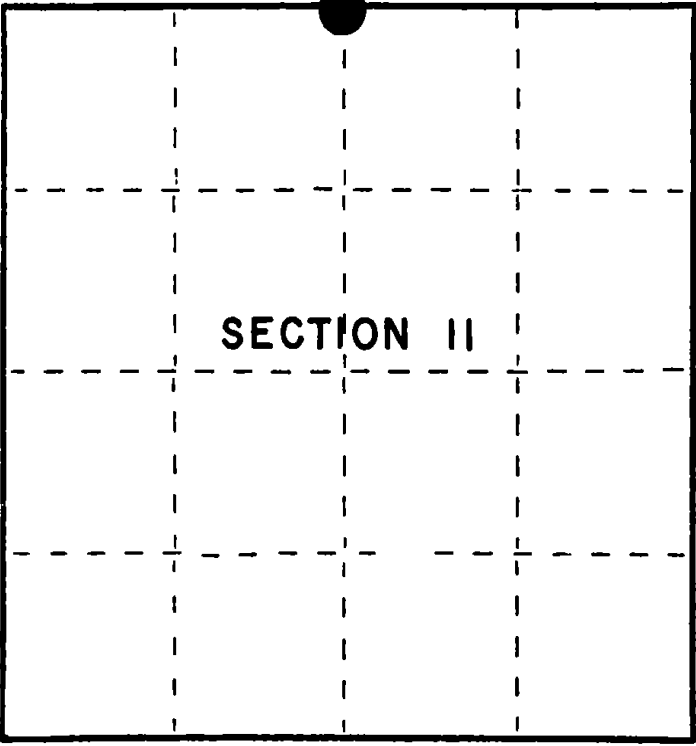
Found the monument and bearing trees as described above:

| | | |
|-------------|---------|------------|
| Hemlock 11" | N 22° E | 13.91 feet |
| Hemlock 16" | S 71° E | 35.19 feet |
| Hemlock 11" | S 05° E | 37.31 feet |
| Cedar 9" | N 32° W | 25.58 feet |

Description of monument and accessories I established to perpetuate the original location of this corner.

Set an additional assessor at the corner position:

Steel sign post N 85° W 1.0 feet



● = Corner monument restored.

Dated at Iron River, MI, this 12th day of June, 1995

Signature Gary L. Pisoni Title Land Surveyor Registration No. S-1634
(County Surveyor, Registered Land Surveyor, or other duly authorized official)

Office of Register of Deeds, County of Forest, I hereby certify that the within
instrument was filed in this office for record on the 20th day of March, 1997
at 1:30 o'clock P M.

(Register of Deeds)
By Paul J. Muehling Deputy

FORM NO. 985-A



Stock No. 26273

158092

43614020020

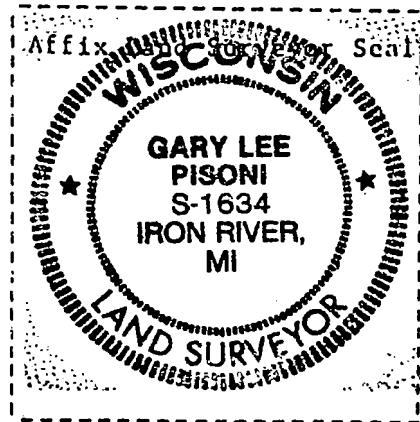
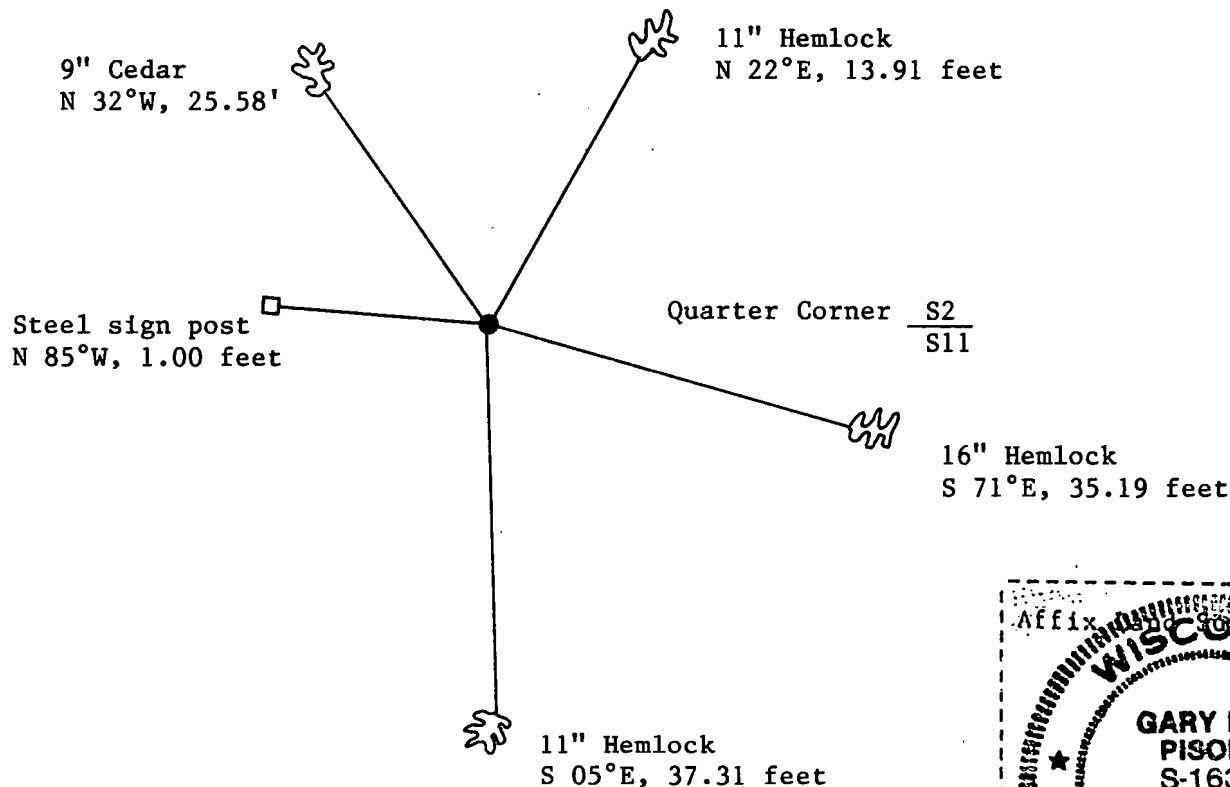
(e) Describe any material discrepancy between the location of the corner as restored or reestablished and the location of that corner as previously restored or reestablished by distance and direction. Show the discrepancy on the plan view drawing under (d), above. Show the distances between the corner as previously restored or reestablished and (1) the corner as restored or reestablished, and (2) to at least 2 of the witness monuments shown on the drawing in (d), above.

None

(f) Was the corner restored through acceptance of (1) an obliterated evidence location, or, (2) a found perpetuated location?

Restored through acceptance of a found perpetuated location.

(g&h) Was the corner reestablished through lost corner proportionate methods? If so, show the method, including the directions and distances to other public land survey corners used as evidence or used for proportioning in determining the corner location?



(i) I, Gary L. Pisoni
(type or print name) certify that the corner location shown on this record was determined by me or under my direction and control and that this U.S. Public Land Survey Monument Record is correct and complete to the best of my knowledge and belief.

Signature

Date