

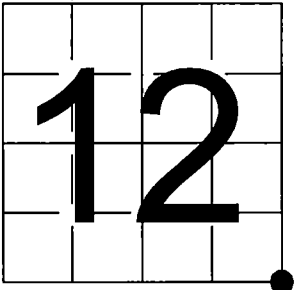
FILED ON:
12/10/2025 10:02 AM
CORTNEY BRITTEN CLEEREMAN
REGISTER OF DEEDS
FOREST COUNTY WI
PAGES: 1

U.S. PUBLIC LAND SURVEY
MONUMENT RECORD

NOTE: This form is intended and designed to fulfill all requirements of Wisconsin Administrative Code, Chapter A-E 7.08 U.S. Public Land Survey Monument Record (3) (a-i)

A-E 7.08(3)(a) Identity of corner:
Southeast Corner Section 12,
Township 36 North, Range 14 East
of the Fourth Principal Meridian,
Town of Laona, Forest County, Wisconsin

WISCRS - FOREST COUNTY
N: 584,167.956 USft (XXX,XXX.XXX)
E: 894,197.172 USft (XXX,XXX.XXX)
Datum: NAD83 (2011)
GNSS Method RTN
GNSS Control WISCORS VRS



The coordinate value shown has been verified by the average of two or more GPS observations at a markedly different time. Coordinates shown in parenthesis are previously published values.

A-E 7.08(3)(b)

Original Surveyor: Artemas Curtis - September, 1857
Tamarac 12 - S 35° W, 36 Links, Tamarac 10 - N 65° W, 20 Links, Tamarac 8, N 38° E, 40 Links, Tamarac 10 - S 29° E, 10 Links

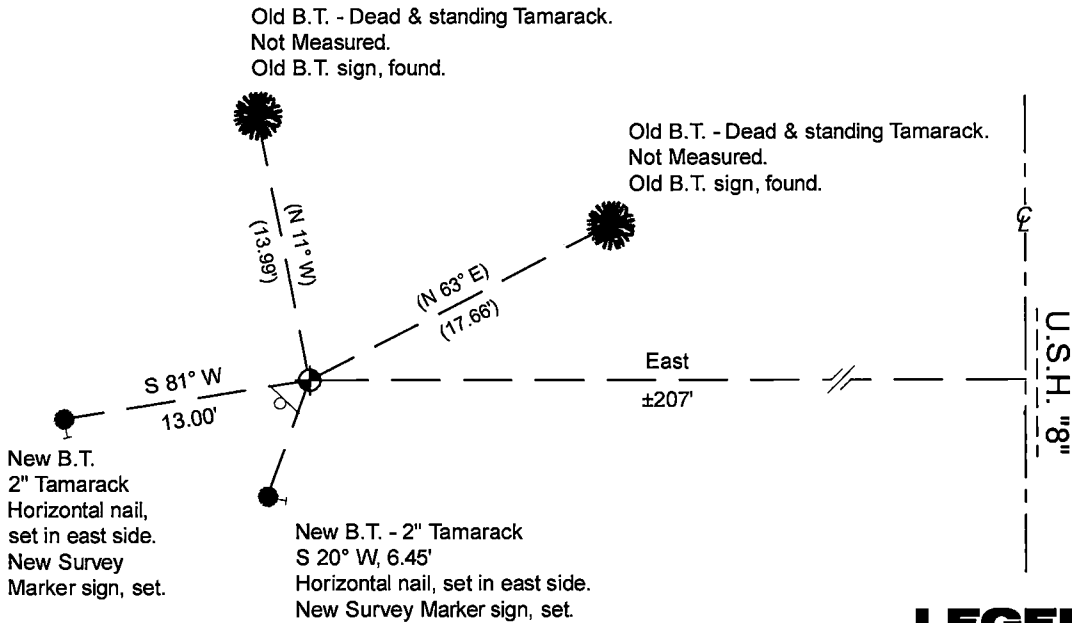
See previous U.S. Public Land Survey Monument Record - J-25 - December 23, 1993 - Surveyor 1634 - Gary Lee Pisoni - THENCE:

June 25, 2017 - Surveyor 809-8 - Michael S. Hess - indicates this position as "Alum. Mon." on county record Map #361507-20170625.

October 1, 2025 - I found a 2.4" diameter iron pipe monument with a 3" diameter brass cap stamped to identify the corner location. The monument is in a tamarack marsh, and is ±207 feet west of the U.S.H. 8 center line. I also found 2 of Pisoni's bearing trees dead and standing.
I established 1 new reference monuments as shown below.

A-E 7.08(3)(c)(d) Plan view of corner with references to at least 4 witness monuments.

Bearings listed to the nearest second
are referenced to the:
Wisconsin Coordinate
Reference System,
Forest County Zone.
All other bearings are magnetic.



LEGEND

- Monument sizes = outside diameter measurements.
- This Corner
 - Steel post, found ±1.2 feet SW of corner
 - Galvanized nail, set or nail found as shown
- 0' 10' 20'

A-E 7.08(3)(e) 1859 Surveyor set a post, 1968 Surveyor replaced a 4 x 4 wood post with an iron pipe monument with a brass cap, 1993 surveyor found the same, as did I in 2025. 2017 surveyor found an aluminum monument.

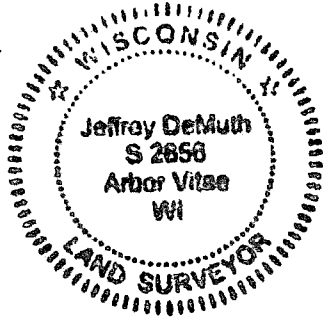
A-E 7.08(3)(f) I accept this monument in good faith as a FOUND PERPETUATED LOCATION of the corner.
A-E 7.08(3)(g)(h) This corner was not determined through lost-corner-proportionate methods.

A-E 7.08(3)(i) I, Jeffrey L. DeMuth, Professional Land Surveyor No. S-2656, hereby certify that the corner location on this record was determined by me or under my direction and control, and that this U.S. Public Land Survey Monument Record is correct and complete to the best of my knowledge, and belief.

SIGNATURE

October 3, 2025

DATE



43614120000

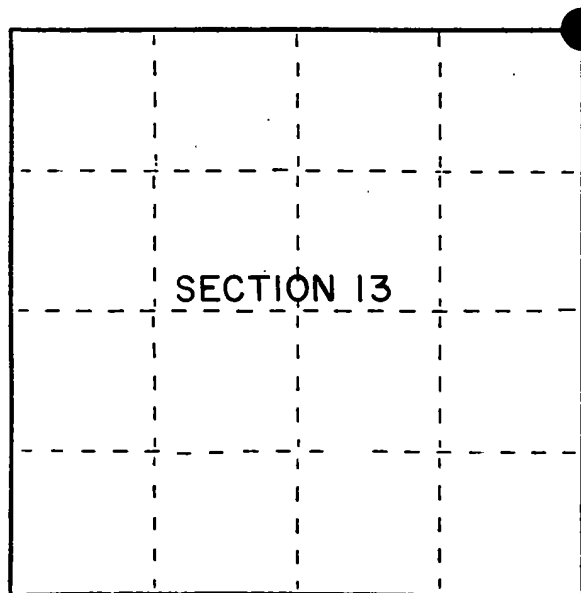
U.S. PUBLIC LAND SURVEY MONUMENT RECORD

Index No. J-25

State of Wisconsin }
County of Forest } ss.

I, Gary L. Pisoni, do hereby certify that on the 22nd day of December, 1993, I found evidence of the Northeast Section corner of Section 13 Township 36, North, Range 14 East, Fourth Principal Meridian, as described hereon; and that from this evidence I established a new monument and accessories as described hereon to perpetuate the original location of this corner.

Resident witnesses:



● = Corner monument restored.

History of original corner establishment:

Original Government Survey in 1857 by Artemas Curtis.
North between Sections 13 and 18, at 80.00 chains, set Section corner wood post to Sections 12, 7, 13, 18, from which the following bear:

Tamarack	12"	S 35°W	36 links
Tamarack	10"	N 65°W	20 links
Tamarack	8"	N 38°E	40 links
Tamarack	10"	S 29°E	10 links

Description of corner evidence found:

In 1967, Jean Resvick, RLS with the U.S.F.S. restored the corner position at record bearing and distance from the original Tamarack bearing tree stumps. Set a 2 inch diameter galvanized iron pipe with a brass cap stamped as follows: T36N, R14E, R15E, S-12, S-7, S-13, S-18, 1967, S-802 from which the following new blazed and scribed bearing trees bear:

Spruce	6"	N 26°E	68.07 feet
Tamarack	7"	S 24°E	100.73 feet

On 12/22/93, I found the above described monument but all bearing tree references were missing.

Description of monument and accessories I established to perpetuate the original location of this corner.

Blazed and scribed the following new corner references: (Measurements taken to nail in side of tree)

Tamarack	4"	N 63°E	17.66 feet
Tamarack	4"	S 69°E	29.48 feet
Tamarack	3"	S 86°W	13.94 feet
Tamarack	5"	N 11°W	13.99 feet
Steel sign post		S 55°W	1.2 feet

Dated at Iron River, MI, this 23rd day of December, 1993

Signature Gary L. Pisoni Title Land Surveyor Registration No. S-1634
(County Surveyor, Registered Land Surveyor, or other duly authorized official)

Office of Register of Deeds, County of Forest, I hereby certify that the within instrument was filed in this office for record on the 20th day of March, 1997 at 1:30 o'clock P M.

(Register of Deeds)

By [Signature] Deputy

FORM NO. 985-A

RECORDS

Stock No. 26273

158101

43614120000

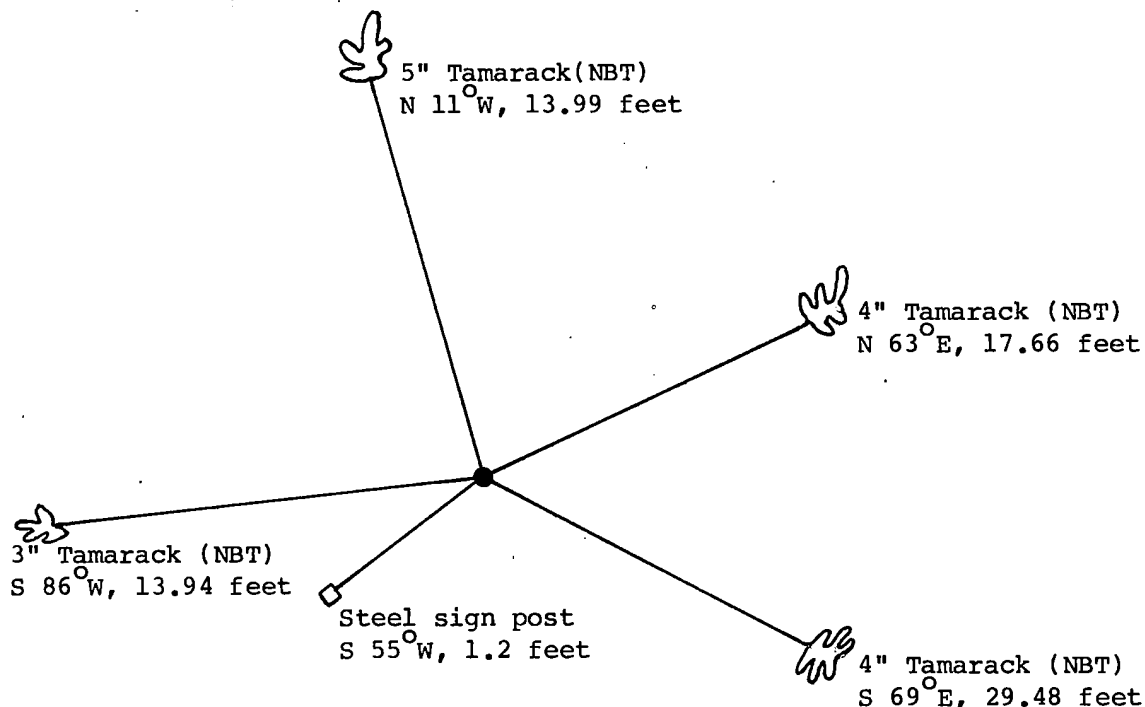
e) Describe any material discrepancy between the location of the corner as restored or reestablished and the location of that corner as previously restored or reestablished by distance and direction. Show the discrepancy on the plan view drawing under (d), above. Show the distances between the corner as previously restored or reestablished and (1) the corner as restored or reestablished, and (2) to at least 2 of the witness monuments shown on the drawing in (d), above.

See drawing below

(f) Was the corner restored through acceptance of (1) an obliterated evidence location, or, (2) a found perpetuated location?

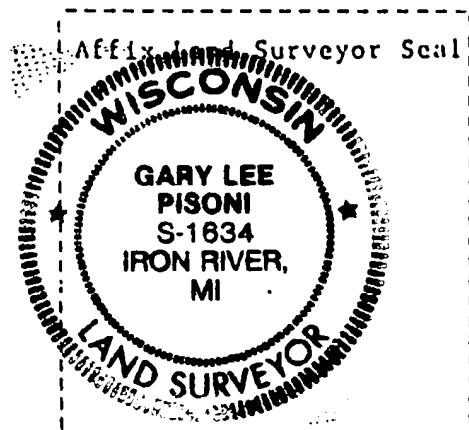
Restored through acceptance of a found perpetuated location.

(g) Was the corner reestablished through lost corner proportionate methods? If so, show the method, including the directions and distances to other public land survey corners used as evidence or used for proportioning in determining the corner location?



S12	S7
S13	S18

Section Corner



Gary L. Pisoni

(i) I, Gary L. Pisoni, (type or print name) certify that the corner location shown on this record was determined by me or under my direction and control and that this U.S. Public Land Survey Monument Record is correct and complete to the best of my knowledge and belief.

Gary L. Pisoni 12-23-93
Signature Date

CERTIFIED LAND CORNER RESTORATION

State of Wisconsin

County of Forest

ss.

I Jean F. Resvick, do hereby certify that on the 11th day of September, 1967, I found evidence of the Southwest Section corner of Section 7 Township 36 North, Range 15 East, Fourth Principal Meridian, as described hereon; and that from this evidence I established a new monument and accessories as described hereon to perpetuate the original location of this corner:

Description of original monument and accessories and subsequent restorations:

Surveyed by Artemas Curtis in 1857.
North between Sections 13 and 18, 80.00 chains
Set wood post.

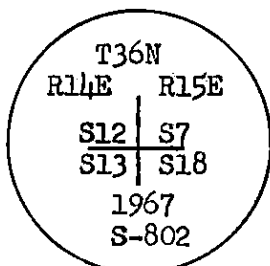
Tamarack 12, S35°W, 36 lks.
Tamarack 10, N65°W, 20 lks.
Tamarack 8, N38°E, 40 lks.
Tamarack 10, S29°E, 10 lks.

Description of corner evidence found:

4 x 4 squared and scribed cedar post.
Tamarack stump, bears S35°W, 23.8 ft. from post found.
Tamarack stump, bears N65°W, 13.2 ft. from post found.
Tamarack stump, bears N38°E, 26.4 ft. from post found.

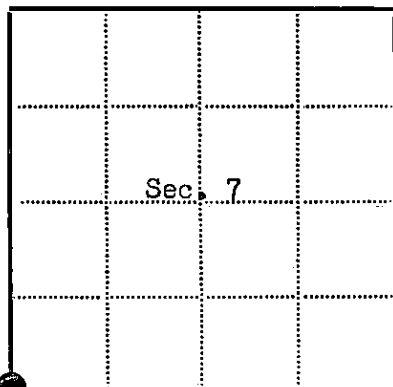
Description of monument and accessories I established to perpetuate the original location of this corner:

Replaced cedar post with a 2-inch inside diameter galvanized wrought iron pipe, 5 feet long, filled with concrete, with brass cap marked:



from which the following blazed and scribed new bearing trees bear:

Spruce, 6, N26°E, 68.07 feet or 103.14 lks.
Tamarack, 7, S24°E, 100.73 feet or 152.62 lks.



● = Corner monument restored

□ =

Resident witnesses.....

Dated at Rhinelanders Wisconsin, this 20th day of September 1968

Signature Jean F. Resvick Title Cadastral Surveyor
(County Surveyor, Registered Land Surveyor, or other duly authorized official)

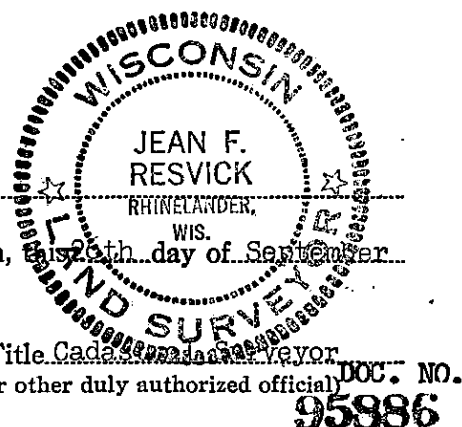
Surveyors Registration No. S-802

Office of Register of Deeds County of Forest

I hereby certify that the within instrument was filed in this office for record on the 31st day of January 1969, and was filed in Book No. I Page No. J-1 of County Records.

Signature Eugene Stutzman Title Register of Deeds

Township 36 North, Range 15 East, Section 7, Index No. J-1, Page No.



436 14120000