

FILED ON:  
01/28/2025 02:33 PM  
CORTNEY BRITTEN CLEEREMAN  
REGISTER OF DEEDS  
FOREST COUNTY WI  
PAGES: 1  
INDEX#:

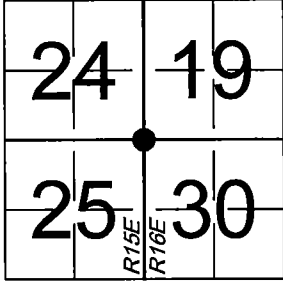
FOREST COUNTY

U. S. PUBLIC LAND SURVEY MONUMENT RECORD

NOTE: This form is intended and designed to fulfill all requirements of Wisconsin Administrative Code, Chapter A-E 7.08 U.S. Public Land Survey Monument Record (3) (a-i)

A-E 7.08(3)(a) Identity of corner:  
Section Corner Common to Sections 24 & 25,  
Township 36 North, Range 14 East and  
Sections 19 & 30, Township 36 North,  
Range 15 East and of the Fourth Principal  
Meridian, Town of Laona, Forest County,  
Wisconsin  
The coordinate value shown has been verified by the average of two or more GNSS observations.

WISCRS - FOREST COUNTY  
N: 573658.380 USft  
E: 894216.468 USft  
Datum: NAD83 (2011)  
GNSS Method RTK  
GNSS Control WISCORS VRS



A-E 7.08(3)(b)(e)  
Original Surveyor: Artemas Curtis - March 1857  
Hemlock 14, S41°W, 28 Lnks; Hemlock 22, N66°, 28 Lnks; Yellow Birch 18, N47°E, 55 Lnks; Hemlock 16, S58°E, 48 Lnks;  
See previous U.S. Public Land Survey Monument Record / Certified Land Corner Restoration - R25, Sept. 1986 - Surveyor S-1381 - James J Fronso.

- Certified Survey Map Recorded as Document No. 116538, by Michael Hess on May 5th, 1979 – indicates a 1" Diameter Iron Pipe at this location.
- Certified Survey Map, Recorded as Document No. 164009, by Michael Hess on September 18th, 1998 – indicates a found GLS Corner.
- Certified Survey Map, Recorded as Document No. 211229, by Michael Hess on December 28, 2012 – indicates a found PLSS Corner.
- Section Subdivision, filed as 361424-19860922 by James Fronso, August 1986 – indicates found 3/4" dia. Iron Pin.
- Plat of Survey, filed as 361424-20081117 by Michael Tremi on November 17, 2008 – indicates a found PK Nail.
- Plat of Survey, filed as 361530-20110215 by Michael Hess on January 19, 2011 – indicates a PLSS Corner Found.
- Plat of Survey, filed as 361530-20130419 by Michael Hess on April 19, 2013 – indicates a PLSS Corner Found.
- Plat of Survey, filed as 361530-20170617 by Michael Hess on January 5, 2017 – indicates a nail in pavement.
- Plat of Survey, filed as 361530-20170926 by Michael Hess on September 20, 2017 – indicates a nail in pavement.
- Plat of Survey, filed as 361530-20180723 by Michael Hess on July 23, 2018 – indicates a nail in pavement.
- Plat of Survey, filed as 361530-20200306 by Michael Hess on February 11, 2018 – indicates a nail in pavement.
- Plat of Survey, filed as 361530-20210517 by Michael Hess on May 21, 2021 – indicates a nail in pavement.

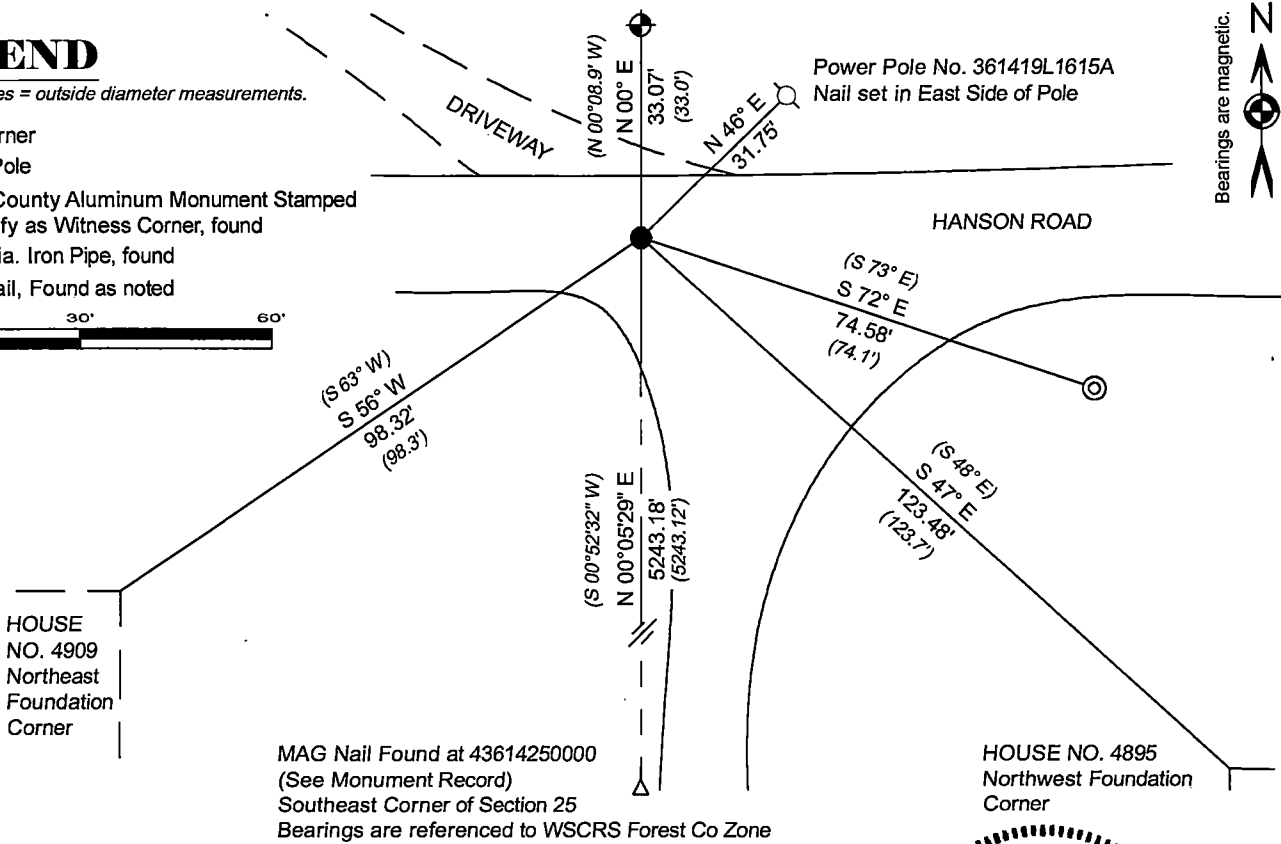
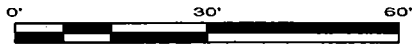
October 7, 2024 - I found a 3/4" Dia Iron Rod, approximately 8" below the road surface. The monument matches distances on existing mapping to the South. The monument approximately in the Centerline of Hanson Road and 10' West of the West Driveway Edge Extension to the South. Corner is approximately 612' East of the Centerline of State Trail (former Railroad Grade).

A-E 7.08(3)(c)(d) Plan view of corner with references to at least 4 witness monuments.

LEGEND

Monument sizes = outside diameter measurements.

- This Corner
- Power Pole
- ⊕ Forest County Aluminum Monument Stamped to identify as Witness Corner, found
- ⊙ 1 1/4" dia. Iron Pipe, found
- △ MAG Nail, Found as noted

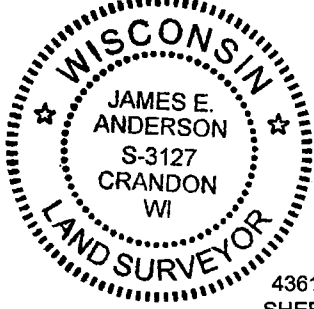


A-E 7.08(3)(f)(g)(h) I accept this monument in good faith as a FOUND PERPETUATED LOCATION of the corner and was not determined through lost-corner-proportionate methods.

A-E 7.08(3)(i) I, James E Anderson, Professional Land Surveyor No. S-3127, County Surveyor for Forest County, hereby certify that the corner location on this record was determined by me or under my direction and control, and that this U.S. Public Land Survey Monument Record is correct and complete to the best of my knowledge, and belief.

SIGNATURE

January 3, 2025  
DATE



R25  
43614240000  
SHEET 1 OF 1

43614240000

## U. S. PUBLIC LAND SURVEY MONUMENT RECORD

INSTRUCTIONS: This record shall show the location of the corner and shall include all of the following nine elements (a through i).

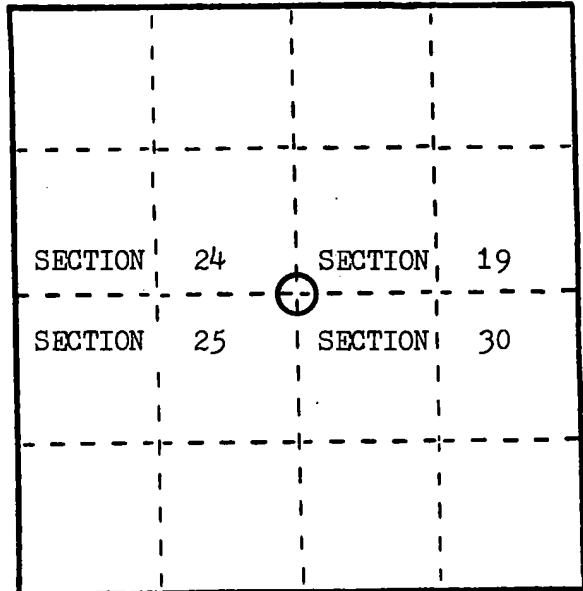
- (a) Identify the corner by reference to the U.S. public land survey system.  
 O = Corner monument restored.

Corner to Sections 24 and 25, T.36 N., R.14 E. and Sections 19 and 30, T.36 N., R.15 E. of the 4th Principal Meridian, Wisconsin.

REGISTER'S OFFICE  
 Forest County, Wis.

Received for record this 22nd day  
 of Sept. A.D., 1986 at  
10:20 o'clock A.M. and recorded  
 in Vol. CORNER RESTORATIONS  
 page R-25

Paul H. Schreiner  
 Register of Deeds



- (b) Describe any record evidence, monument evidence, occupational evidence, testimonial evidence or any other material evidence you considered, and whether the monument was found or placed.

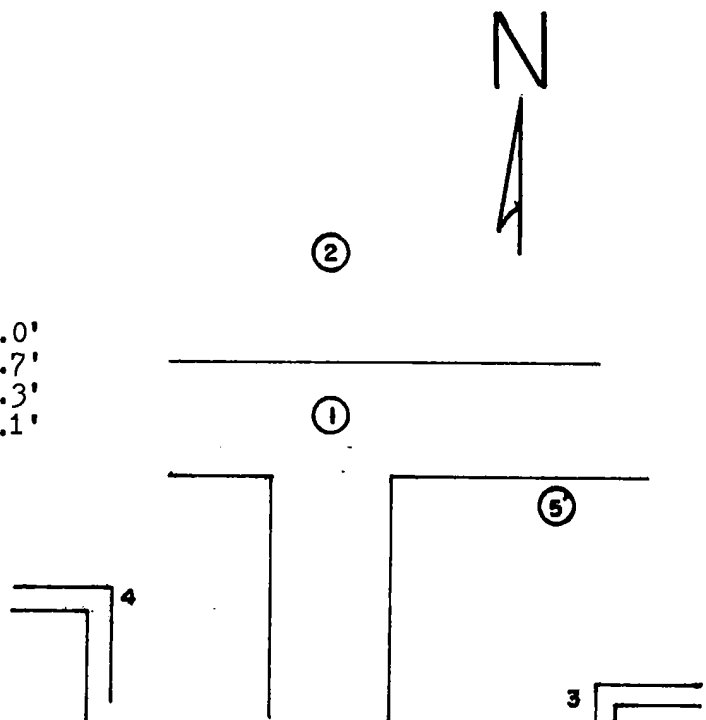
In 1859 James Mc Bride set a wood post and marked B.T.s as follow;  
 Hemlock 14" S.41 W. 28 lks., Hemlock 22" N.66 W. 28 lks., Y.Birch 18" N.47 E. 55 lks.,  
 Hemlock 16" S.58 E. 48 lks.

In 1985 I found a P.K. nail in aproximate center of road intersection; I was told by Bob Mentz and an adjoining land owner, both long time residents of the immediate area, that the corner used to be farther west by several feet; I dug up a 10'x15' area of road intersection with a backhoe searching for evidence, found that old N.- S. highway had been graded down below natural surface, destroying original corner location; set corner in center of old E.- W. road and 606' east from center of existing rail road as given in old R.R. Plat; I accept this position as the best evidence of the corner location referenced as shown below. I set a 3/4"x 18" threaded iron pin for corner in road.

- (c) In the plan view drawing below, provide reference ties to at least 4 witness monuments, or, if the location is within a municipality, to at least 2 witness monuments. (Witness monuments shall be made of concrete, natural stone, iron or other equally durable material.)  
 Describe witness monuments.

- (d) Show a plan view drawing depicting the relevant monuments and reference ties which is sufficient in detail to enable accurate relocation of the corner monument if the corner monument is disturbed. Indicate north.

1. Section Corner
2. W.C. 2"x 36" Aluminum Pipe N.00-08.9 W. 33.0'
3. N.W. Corner of House Foundation S.48 E.123.7'
4. N.E. Corner of House Foundation S.63 W. 98.3'
5. 1 1/4" Iron Pipe S.73 E. 74.1'



- (e) Describe any material discrepancy between the location of the corner as restored or reestablished and the location of that corner as previously restored or reestablished by distance and direction. Show the discrepancy on the plan view drawing under (d), above. Show the distances between the corner as previously restored or reestablished and (1) the corner as restored or reestablished, and (2) to at least 2 of the witness monuments shown on the drawing in (d), above.

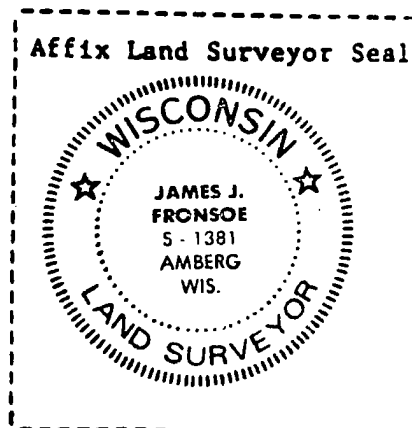
none

- (f) Was the corner restored through acceptance of (1) an obliterated evidence location, or, (2) a found perpetuated location?

corner restored using center of old E.- W. road and the distance east from the old rail road as given on R.R. Plat.

- (g&h) Was the corner reestablished through lost corner proportionate methods? If so, show the method, including the directions and distances to other public land survey corners used as evidence or used for proportioning in determining the corner location?

no



- (1) I, James J. Fronsoe, R.L.S.  
(type or print name) certify that the corner location shown on this record was determined by me or under my direction and control and that this U.S. Public Land Survey Monument Record is correct and complete to the best of my knowledge and belief.

Signature

James J. Fronsoe, Sept, 1986  
Date