

CORTNEY BRITTEN CLEEREMAN  
REGISTER OF DEEDS  
FOREST COUNTY WI  
PAGES: 1

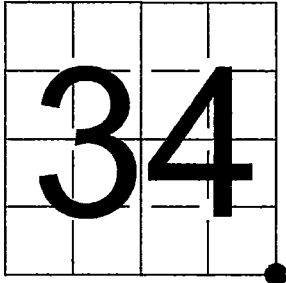
INDEX#: Z17

U. S. PUBLIC LAND SURVEY MONUMENT RECORD

NOTE: This form is intended and designed to fulfill all requirements of Wisconsin Administrative Code, Chapter A-E 7.08 U.S. Public Land Survey Monument Record (3) (a-i)

A-E 7.08(3)(a) Identity of corner:  
Southeast Corner Section 34,  
Township 36 North, Range 14 East  
of the Fourth Principal Meridian,  
Town of Laona, Forest County,  
Wisconsin

WISCORS - FOREST COUNTY  
N: 563,138.239 USft (XXX,XXX.XXX)  
E: 883,775.841 USft (XXX,XXX.XXX)  
Datum: NAD83 (2011)  
GNSS Method RTK  
GNSS Control WISCORS VRS



The coordinate value shown has been verified by the average of two or more GPS observations at a markedly different time. Coordinates shown in parenthesis are previously published values.

A-E 7.08(3)(b)

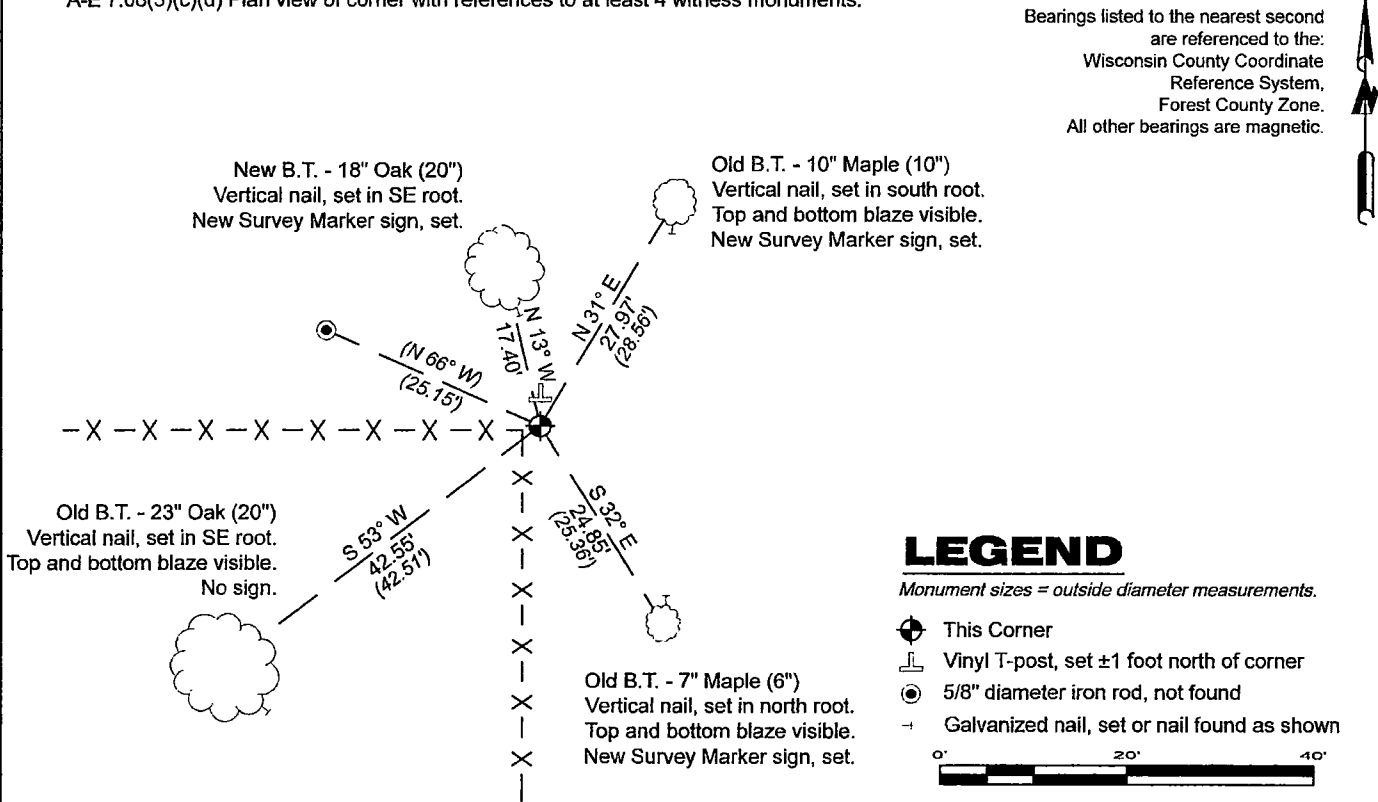
Original Surveyor: Alfred Millard - May - June 1858 - NOTE: Previous Monument Record lists Artemus Curtis as the Original Surveyor.  
Sugar 10 - N 40° E, 14 Links, Maple 10 - N 53° W, 11 Links, W. Birch 10 - S 83° W, 17 Links, Sugar 8 - S 65° E, 51 Links

See previous U.S.Public Land Survey Monument Record - A-17 - May 1, 2001 - Surveyor 2197 - Michael A. Tremi - THENCE:

- December 14, 2001 - Surveyor 2197 - Michael A. Tremi - indicates this position as "Forest County. aluminum mon." on county record Map #351402-20011214 (X2).
- July 16, & October 14, 2002 - Surveyor 2197 - Michael A. Tremi - indicates this position as "Forest County aluminum mon." on county record Map #351402-20020716 & #351402-20021014.
- November 13, 2008 - Surveyor 2197 - Michael A. Tremi - indicates this position as "2" iron pipe" on county record Map #351403-20081113.
- May 31, 2016 - Surveyor 1234 - James D. Rein - indicates this position as "Forest County 2.4" dia. capped aluminum monument" on county record Map #361435-20160531.
- June 16, 2019 - Surveyor 809-8 - Michael S. Hess - indicates this position as "Forest County PLSS" on county record Map #351403-20190616.
- June 6, 2022 - Surveyor 809-8 - Michael S. Hess - indicates this position as "aluminum mon" on county record Map #361434-20220606.

June 19, 2024 - I found a 2.25" diameter aluminum pipe with a 3.25" diameter aluminum cap stamped to identify the corner location. The monument is at the intersection of a fence running west and south, and extends ±4" above grade. I also found 3 of Tremi's bearing trees. I established 1 new reference monument as shown below.

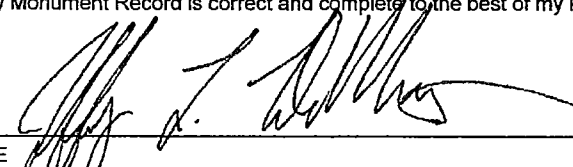
A-E 7.08(3)(c)(d) Plan view of corner with references to at least 4 witness monuments.



A-E 7.08(3)(e) 1858 Surveyor set a post, 2001 Surveyor found 1 1/2" dia. iron pipe and replaced it with a Forest County aluminum monument, subsequent surveyors found the same as did I found in 2024.

A-E 7.08(3)(f) I accept this monument in good faith as a FOUND PERPETUATED LOCATION of the corner.  
A-E 7.08(3)(g)(h) This corner was not determined through lost-corner-proportionate methods.

A-E 7.08(3)(i) I, Jeffrey L. DeMuth, Professional Land Surveyor No. S-2656, hereby certify that the corner location on this record was determined by me or under my direction and control, and that this U.S. Public Land Survey Monument Record is correct and complete to the best of my knowledge, and belief.

SIGNATURE  July 3, 2024  
DATE



43614340000

43614340000

Z17

Document Number

171644

REGISTER'S OFFICE  
Forest County, Wis.  
Received for record this 22<sup>nd</sup> day  
of May A.D., 2001 at  
11:45 o'clock A M. and recorded  
in Vol. Corner Restoration  
page A-17  
Ray Swanson, Deputy  
Register of Deeds

U.S. PUBLIC LAND SURVEY MONUMENT RECORD

(As Required by WI Adm. Code)

History of original corner establishment and subsequent restorations and descriptions of any record, monument, occupational, testimonial or other evidence considered:

1857 - Artemus Curtis, set original corner post and made the following B.T.'s:

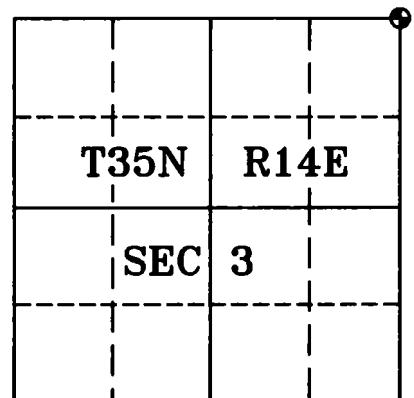
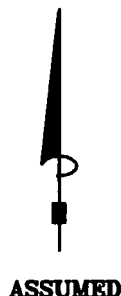
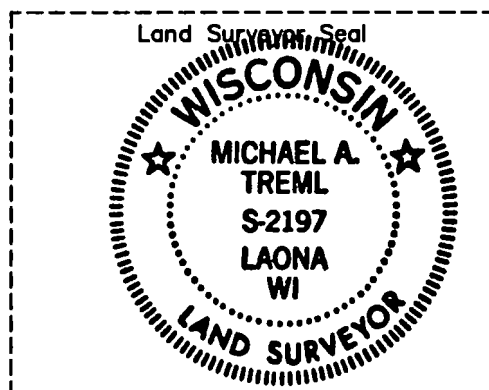
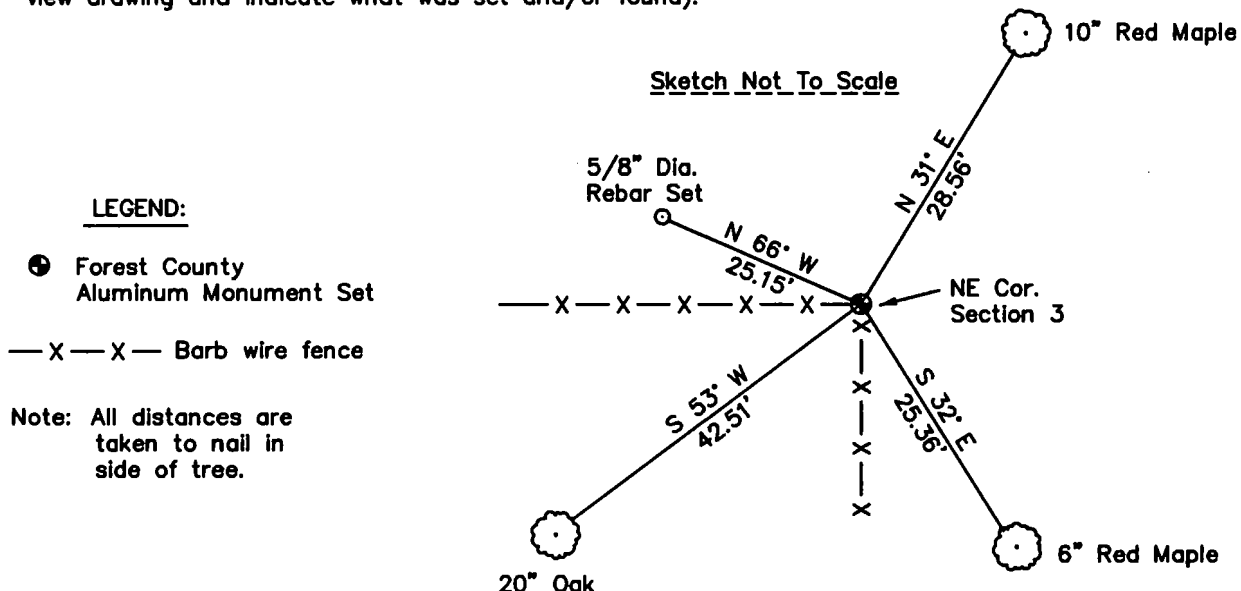
Sugar, 10", N 40° E, 14 lks., 9.24 feet.  
Maple, 10", N 53° W, 11 lks., 7.26 feet.  
W. Birch, 10", S 83° W, 17 lks., 11.22 feet.  
Sugar, 8", S 65° E, 71 lks., 46.86 feet.

2001 - I found no evidence of original corner. I found a 1 1/2" dia. iron pipe at a fence intersection running South and West. Iron pipe has been accepted and used by local surveyors. I thus accepted the iron pipe as best possible evidence of the corner position. I replaced iron pipe with a Forest County aluminum monument and made 4 new references to it.

Corner was: (Check All That Apply)

- ☐ Restored through acceptance of an obliterated evidence location.  
☒ Restored through acceptance of a found perpetuated location.  
☐ Considered a lost corner and reestablished through lost corner proportionate methods (include a plan view drawing showing distances and directions to other Public Land Survey Corners used for proportioning and determining the corner location).  
☐ Restored or reestablished in a location that differs from a previous restoration or reestablishment (include a plan view drawing and indicate what was set and/or found).

Describe the monument and accessories used to perpetuate the location of this corner (include a plan view drawing and indicate what was set and/or found).



I, Michael A. Trembl, RLS  
(type or print name) certify that the corner location shown on this record was determined by me or under my direction and control and that this U.S. Public Land Survey Monument Record is correct and complete to the best of my knowledge and belief.

Michael A. Trembl 5-1-01  
Signature Date

The Northeast corner of  
Section 3 T. 35 N., R. 14 E.  
Forest County, WI

Index No. A-17

43614340000