

Document Number

171645

REGISTER'S OFFICE
Forest County, Wis.
Received for record this 22nd day
of May A.D., 2001 at
11:45 o'clock A.M. and recorded
in Vol. Corner Restoration
page A-15
Kay Swanson, Deputy
Register of Deeds

U.S. PUBLIC LAND SURVEY MONUMENT RECORD

(As Required by WI Adm. Code)

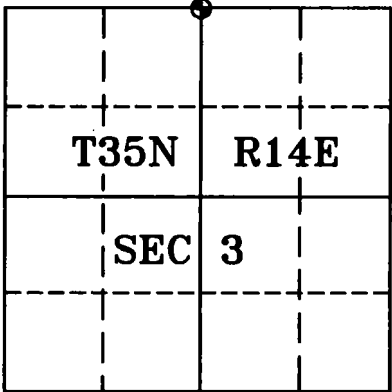
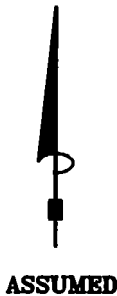
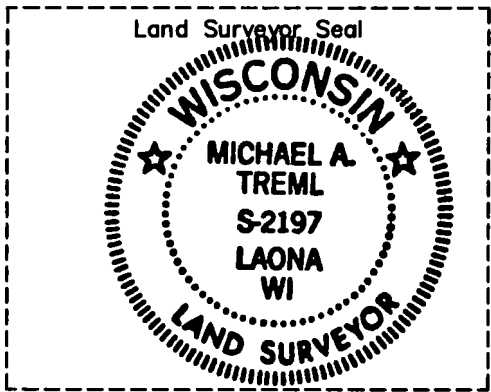
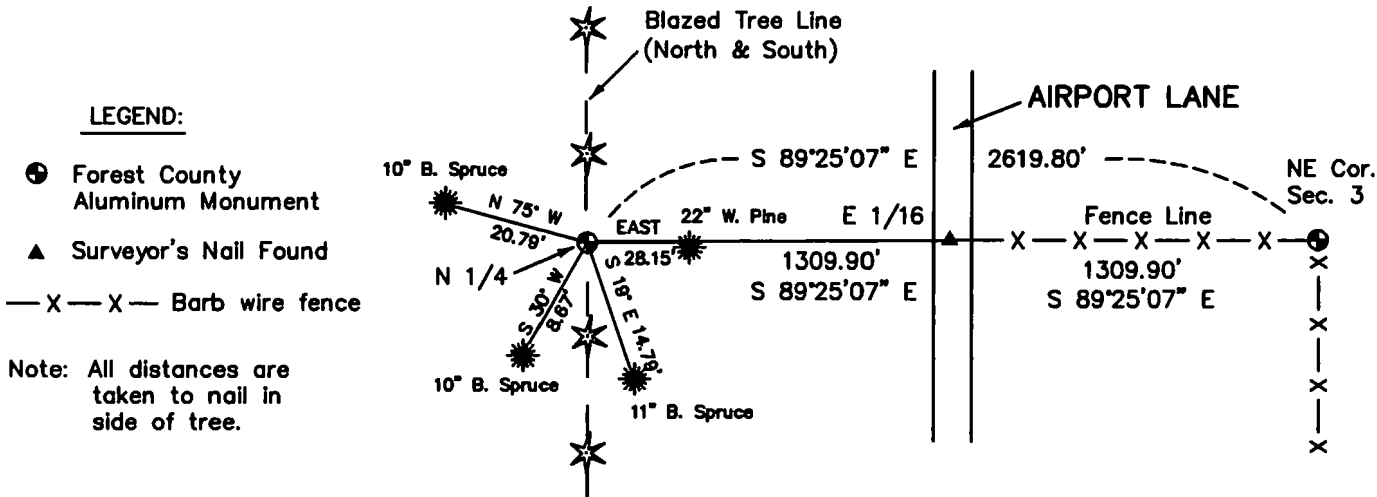
History of original corner establishment and subsequent restorations and descriptions of any record, monument, occupational, testimonial or other evidence considered:

- 1857 - Artemus Curtis, set original corner post and made the following B.T.'s:
Y. Pine, 12", S 50° E, 40 lks., 26.40 feet.
Tamarack, 10", S 70° E, 26 lks., 17.16 feet.
- 2001 - I found no evidence of original corner. I found a surveyor's nail at the E 1/16 corner between Sections 3 & 34. Nail falls in West lane of Airport lane (20' wide blacktop) and on fence line running East and was used by local surveyors to layout lots along Airport Lane in the 80's. I then ran a line West from the northeast corner of Section 3 through nail at the E 1/16 and doubled the distance to reestablish the N 1/4 cor. of Section 3. At this computed position the corner falls on an old blazed tree line running North and South and is S 20° W, 5.40 feet from a black spruce with old blazes on four sides. I set a Forest County Aluminum monument at the N 1/4 cor. position and made the following BT's.

Corner was: (Check All That Apply)

- ☐ Restored through acceptance of an obliterated evidence location.
☐ Restored through acceptance of a found perpetuated location.
☒ Considered a lost corner and reestablished through lost corner proportionate methods (include a plan view drawing showing distances and directions to other Public Land Survey Corners used for proportioning and determining the corner location).
☐ Restored or reestablished in a location that differs from a previous restoration or reestablishment (include a plan view drawing and indicate what was set and/or found).

Describe the monument and accessories used to perpetuate the location of this corner (include a plan view drawing and indicate what was set and/or found).



I, Michael A. Trembl, RLS
(type or print name) certify that the corner location shown on this record was determined by me or under my direction and control and that this U.S. Public Land Survey Monument Record is correct and complete to the best of my knowledge and belief.

Michael A. Trembl 5-2-01
Signature Date

The North One-quarter corner of
Section 3 T. 35 N., R. 14 E.
Forest County, WI

Index No. A-15

43614340020