

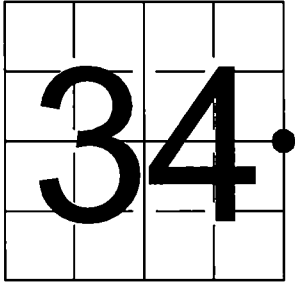
FILED ON:
12/10/2025 10:02 AM
CORTNEY BRITTEN CLEEREMAN
REGISTER OF DEEDS
FOREST COUNTY WI
PAGES: 1

U.S. PUBLIC LAND SURVEY
MONUMENT RECORD

NOTE: This form is intended and designed to fulfill all requirements of Wisconsin Administrative Code, Chapter A-E 7.08 U.S. Public Land Survey Monument Record (3) (a-i)

A-E 7.08(3)(a) Identity of corner:
East 1/4 Corner Section 34,
Township 36 North, Range 14 East
of the Fourth Principal Meridian,
Town of Laona, Forest County, Wisconsin

WISCRS - FOREST COUNTY
N: 565,779.271 USft (XXX,XXX.XXX)
E: 883,779.255 USft (XXX,XXX.XXX)
Datum: NAD83 (2011)
GNSS Method RTN
GNSS Control WISCORS VRS



The coordinate value shown has been verified by the average of two or more GPS observations at a markedly different time. Coordinates shown in parenthesis are previously published values.

A-E 7.08(3)(b)

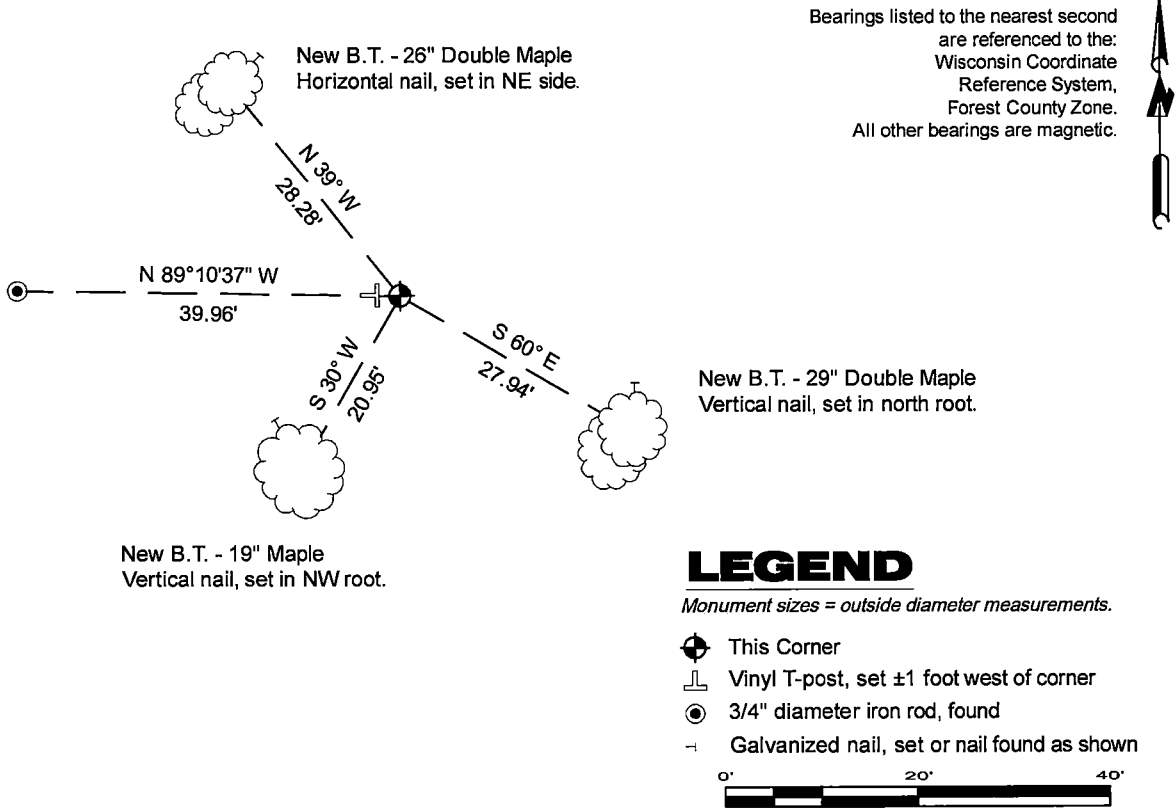
Original Surveyor: James McBride - July 25, 1859 to July 31, 1859
Birch 14 - S 53° E, 37 Links, Birch - N 47° W, 7 Links

See previous U.S. Public Land Survey Monument Record - X-17 - July 26, 1989 - Surveyor 00973 - Wayne G. Dobbratz - THENCE:

- August 18, 2018 - Surveyor 3009 - Jordan G. Brost - indicates this position as "aluminum monument found" on county record Map #36143-20180818.
- June 17, 2019 - Surveyor 809-8 - Michael S. Hess - indicates this position as "brass capped monument" on county record Map #361435-20190617.
- June 29, 2021 - Surveyor 809-8 - Michael S. Hess - indicates this position as "aluminum mon frnd" on county record Map #361435-20210629.
- June 6, 2022 - Surveyor 809-8 - Michael S. Hess - indicates this position as "aluminum monument found" on county record Map #361434-20220606.

September 8, 205 - I found a 2.5" diameter aluminum capped monument stamped to identify the corner location. The monument is ±110 feet west of the centerline of West Silver Lake Road and extends flush with grade. All of Dobbratz's bearing trees have been destroyed. I established 4 new reference monuments as shown below.

A-E 7.08(3)(c)(d) Plan view of corner with references to at least 4 witness monuments.



A-E 7.08(3)(e) 1859 Surveyor set a post, 1989 Surveyor replaced a 1 1/4" iron pipe with a Forest County monument, subsequent surveyors found the same, as did I in 2025.

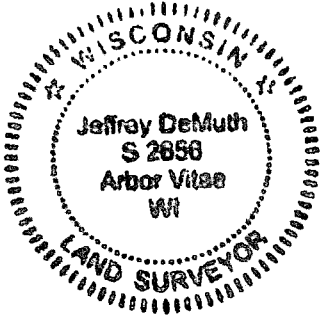
A-E 7.08(3)(f) I accept this monument in good faith as a FOUND PERPETUATED LOCATION of the corner.
A-E 7.08(3)(g)(h) This corner was not determined through lost-corner-proportionate methods.

A-E 7.08(3)(i) I, Jeffrey L. DeMuth, Professional Land Surveyor No. S-2656, hereby certify that the corner location on this record was determined by me or under my direction and control, and that this U.S. Public Land Survey Monument Record is correct and complete to the best of my knowledge, and belief.

SIGNATURE

September 18, 2025

DATE

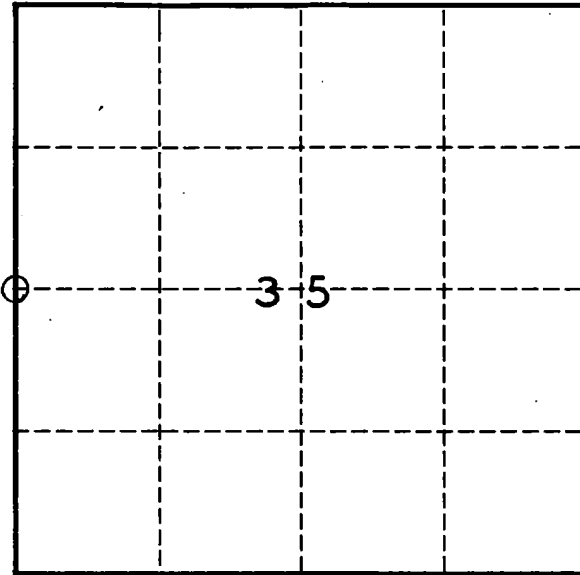


43614342000

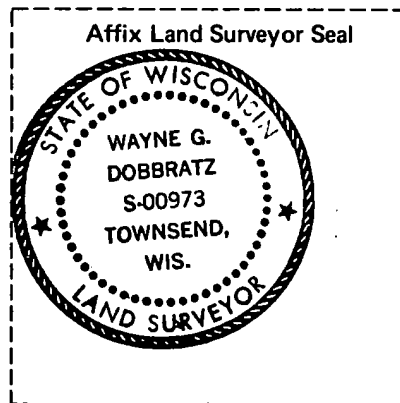
U. S. PUBLIC LAND SURVEY MONUMENT RECORD

INDEX NO. X-17

W. $\frac{1}{4}$ Corner to Section 35 36 N, R 14 E
(Section/Quarter)



○ = Corner monument restored.



I, WAYNE G. DOBBRATZ
(Type or print name) certify that the corner location shown on this record was determined by me or under my direction and control and that this U.S. Public Land Survey Monument Record is correct and complete to the best of my knowledge and belief.

Wayne G. Dobbratz
Signature

History of original corner establishment, record evidence, monument evidence, occupational evidence, testimonial evidence or any other material evidence, and what you found and how the monument was set.

ORIGINAL SURVEY BY McBRIDE IN 1859, NORTH BETWEEN SEC'S. 34 & 35
40.0 CHS. SET $\frac{1}{4}$ POST. BIR. 14" S. 53 E. 37 LKS. BIR. 16" N. 47 W. 7 LKS.

FOUND $1\frac{1}{2}$ " IRON PIPE AT $\frac{1}{4}$ CORNER AS USED IN ADJACENT SURVEY'S
SET FOREST CO. MONUMENT AT THIS POSITION (ALUM. CONST.)

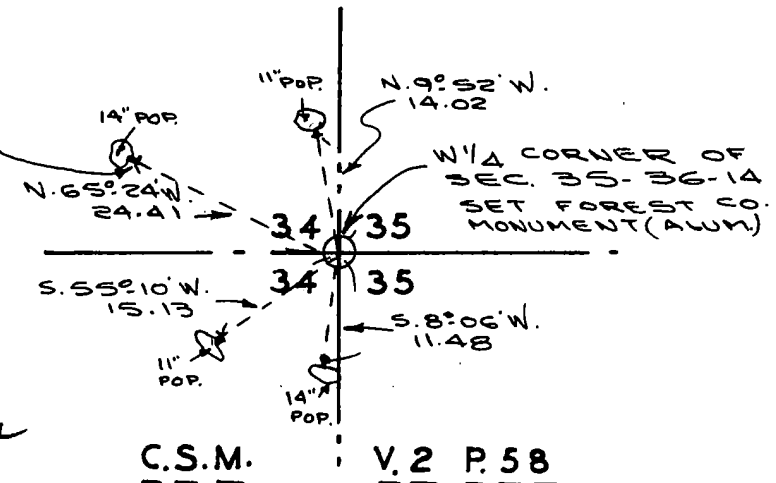
In the plan view drawing below, provide reference ties to at least 4 witness monuments, or, if the location is within a municipality, to at least 2 witness monuments. (Witness monuments shall be made of concrete, natural stone, iron or other equally durable material, except wood other than bearing trees.) Also, show any material discrepancies between the corner restored or re-established and the location of any other previous corner location or occupation.

NOTE! 60p SPIKES SET IN
BEARING TREES

REGISTER'S OFFICE
Forest County, WI

Received for record this 26th day
of July A.D., 19 89
at 7:30 o'clock A.M. and
recorded in Vol. 137871 of records

on page X-17
Paul Achenbrenner
REGISTER



C.S.M.

V. 2 P. 58

DOCUMENT NUMBER

137871

43014342000