

CORTNEY BRITTEN CLEEREMAN
REGISTER OF DEEDS
FOREST COUNTY WI
PAGES: 1

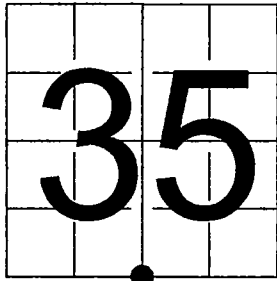
INDEX#: Z19

U. S. PUBLIC LAND SURVEY MONUMENT RECORD

NOTE: This form is intended and designed to fulfill all requirements of Wisconsin Administrative Code, Chapter A-E 7.08 U.S. Public Land Survey Monument Record (3) (a-i)

A-E 7.08(3)(a) Identity of corner:
South 1/4 Corner Section 35,
Township 36 North, Range 14 East
of the Fourth Principal Meridian,
Town of Laona, Forest County,
Wisconsin

WISCRS - FOREST COUNTY
N: 563,125.063 USft (XXX,XXX.XXX)
E: 886,380.831 USft (XXX,XXX.XXX)
Datum: NAD83 (2011)
GNSS Method RTK
GNSS Control WISCORS VRS



The coordinate value shown has been verified by the average of two or more GPS observations at a markedly different time. Coordinates shown in parenthesis are previously published values.

A-E 7.08(3)(b)

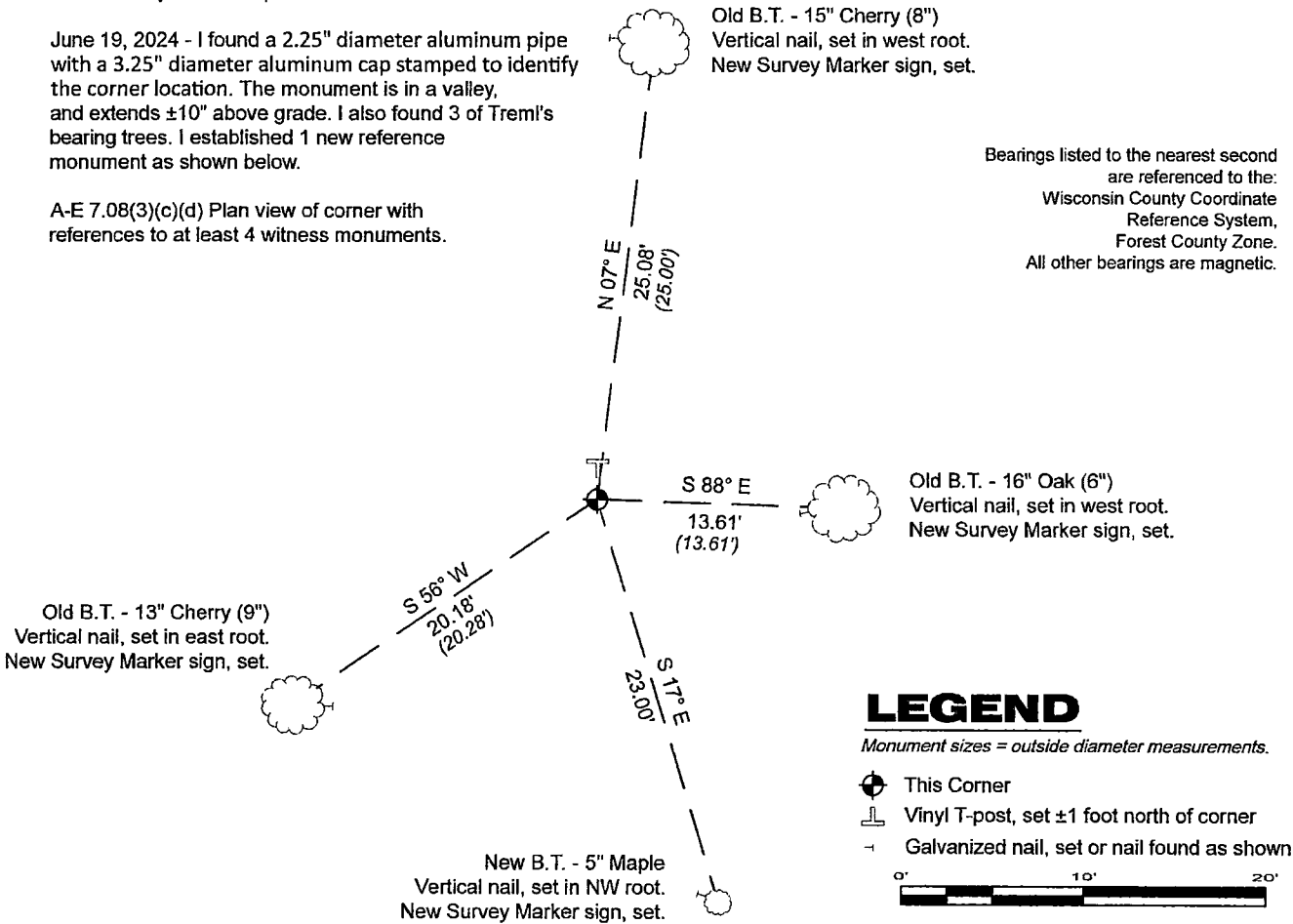
Original Surveyor: Alfred Millard - May - June 1858
Sugar 12 - N 50° E, 46 Links, Y. Birch 18 - S 40° W, 17 Links

See previous U.S.Public Land Survey Monument Record - A-19 - December 4, 2001 - Surveyor 2197 - Michael A. Trembl - THENCE:

- July 16, & October 14, 2002 - Surveyor 2197 - Michael A. Trembl - indicates this position as "Forest County aluminum mon." on county record Map #351402-20020716 & #351402-20021014.
- May 5, 2004 - Surveyor 2197 - Michael A. Trembl - indicates this position as "2" Forest County alum. pipe monument" on county record Map #361435-20040505.
- May 4 & 30, 2005 - Surveyor 2197 - Michael A. Trembl - indicates this position as "2 1/2" dia. Forest County aluminum monument" on county record Map #351402-20050504 & #351402-20050530.
- September 27, 2005 - Surveyor 2197 - Michael A. Trembl - indicates this position as "2 1/2" aluminum pipe monument" on county record Map #351402-20050927.
- April 14, 2006 - Surveyor 2197 - Michael A. Trembl - indicates this position as "2 1/2" Forest County alum. mon." on county record Map #351402-20060414.
- May 31, 2016 - Surveyor 1234 - James D. Rein - indicates this position as "Forest County 2.4" dia. capped aluminum monument" on county record Map #361435-20160531.

June 19, 2024 - I found a 2.25" diameter aluminum pipe with a 3.25" diameter aluminum cap stamped to identify the corner location. The monument is in a valley, and extends ±10" above grade. I also found 3 of Trembl's bearing trees. I established 1 new reference monument as shown below.

A-E 7.08(3)(c)(d) Plan view of corner with references to at least 4 witness monuments.



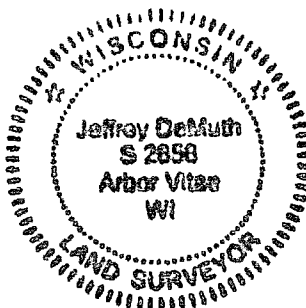
A-E 7.08(3)(e) 1858 Surveyor set a post, 2001 Surveyor set a 2" dia. Forest County aluminum monument at the midpoint and on line between the SW and SE corners of Section 35, subsequent surveyors found the same, as did I in 2024.

A-E 7.08(3)(f) I accept this monument in good faith as a FOUND PERPETUATED LOCATION of the corner.
A-E 7.08(3)(g)(h) This corner was previously determined through lost-corner-proportionate methods.

A-E 7.08(3)(i) I, Jeffrey L. DeMuth, Professional Land Surveyor No. S-2656, hereby certify that the corner location on this record was determined by me or under my direction and control, and that this U.S. Public Land Survey Monument Record is correct and complete to the best of my knowledge, and belief.

SIGNATURE

July 3, 2024
DATE



43614350020

43614350020

Z19

Document Number
173806

REGISTER'S OFFICE
Forest County, Wis.
Received for record this 11th day
of December A.D., 2001 at
9:10 o'clock A.M. and recorded
in Vol. CORNER RESTORATION
page A-19
Lay Swanson, Deputy
Register of Deeds

U.S. PUBLIC LAND SURVEY MONUMENT RECORD

(As Required by WI Adm. Code)

History of original corner establishment and subsequent restorations and descriptions of any record, monument, occupational, testimonial or other evidence considered:

1857 - Alfred Millard, set original corner post and made the following B.T.'s:

Sugar, 12", N 50° E, 46 lks., 30.36 feet.
Y. birch, 18", S 40° W, 17 lks., 11.22 feet.

2001 - I found no evidence of the original corner. Reestablished One-quarter corner midpoint and on line between Section corner to the West common to Sections 2, 3, 34 & 35 and Section corner to the East common to Sections 1, 2, 35 & 36. Set a 2" Dia. Forest County Aluminum monument for the One-quarter corner.

Corner was: (Check All That Apply)

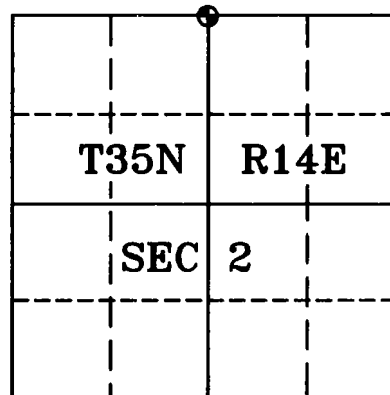
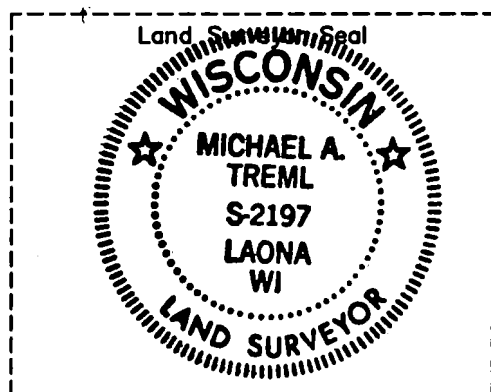
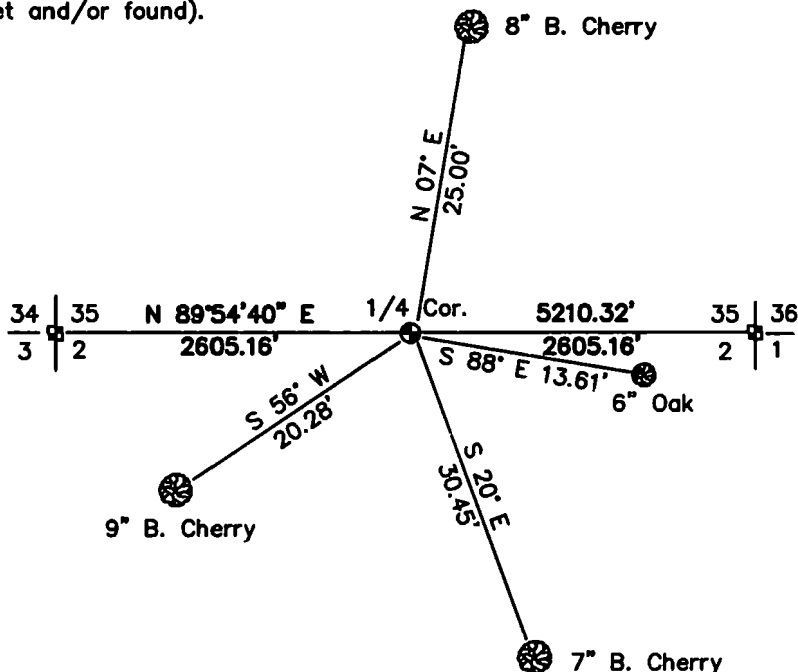
- ☐ Restored through acceptance of an obliterated evidence location.
- ☐ Restored through acceptance of a found perpetuated location.
- ☒ Considered a lost corner and reestablished through lost corner proportionate methods (include a plan view drawing showing distances and directions to other Public Land Survey Corners used for proportioning and determining the corner location).
- ☐ Restored or reestablished in a location that differs from a previous restoration or reestablishment (include a plan view drawing and indicate what was set and/or found).

Describe the monument and accessories used to perpetuate the location of this corner (include a plan view drawing and indicate what was set and/or found).

LEGEND:

-  Set Forest County Aluminum Monument
-  Existing Recorded Monument

Note: All distances are taken to nail in side of tree.



I, Michael A. Tremel, RLS
(type or print name) certify that the corner location shown on this record was determined by me or under my direction and control and that this U.S. Public Land Survey Monument Record is correct and complete to the best of my knowledge and belief.

Michael A. Tremel 12-04-01
Signature Date

The North One-quarter corner of
Section 2 T. 35 N., R. 14 E.
Forest County, WI

Index No. A-19

43614350020