

**!Attention!**

This PLSS corner is in the process of being updated by Forest County. An updated Tie Sheet will be available for this corner soon.

Please contact Kayla at the Forest County Land Information Department for more information.

Contact Info:

715-478-1387 or [Kayla.L@co.forest.wi.us](mailto:Kayla.L@co.forest.wi.us)

245864

FILED ON:

06/06/2025 03:37 PM

CORTNEY BRITTEN CLEEREMAN  
REGISTER OF DEEDS

FOREST COUNTY WI

PAGES: 1

FOREST COUNTY U.S. PUBLIC LAND  
SURVEY MONUMENT LOCATION RECORD

☒ LANDMARK ☐ BENCHMARK FOUND ☒ SET ☐  
CORNER IDENTITY: BERNTSEN SNM-1 STEEL NAIL MARKER RESET ☒  
FOREST COUNTY COORDINATE: N: 563154.277 RE-TIED ☒  
E: 894211.021

ELEVATION-(FEET): \_\_\_\_\_ DATUM: NAD83 (2011)

WEATHER: SUNNY

DATE OF SURVEY: 8/9/2021 TEMPERATURE: 84 °F

SURVEY PARTY: CHRISTOPHER FIERI & COLLIN MARQUARDT

BASIS FOR MONUMENT LOCATION:

(DESCRIBE METHOD OF SURVEY AND CORNER AUTHENTICATION)

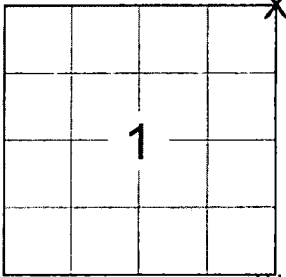
SEARCHED FOR THE NORTHEAST CORNER OF SECTION 1 AND FOUND THE PK NAIL OF RECORD AND THREE OF THE WITNESS MONUMENTS AS SHOWN ON THE PREVIOUS RECORD TIE SHEET FROM 1985. SET A BERNTSEN DRIVE-IN MONUMENT TO THE NORTHWEST FOR A WITNESS MONUMENT AND SET A BERNTSEN SNM-1 STEEL NAIL MARKER AT THE CORNER LOCATION UPON THE COMPLETION OF THE STATE HIGHWAY "32" RESURFACING PROJECT AND PERPETUATED THE CORNER LOCATION AS SHOWN BELOW.

SECTION 1  
TOWNSHIP 35 N  
RANGE 14 E

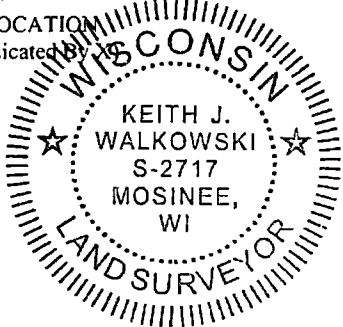
LAONA

CITY, VILLAGE, TOWN

SECTION



LOCATION  
(Indicated By)



CERTIFIED CORRECT:

*Keith J. Walkowski*

KEITH J. WALKOWSKI S-2717

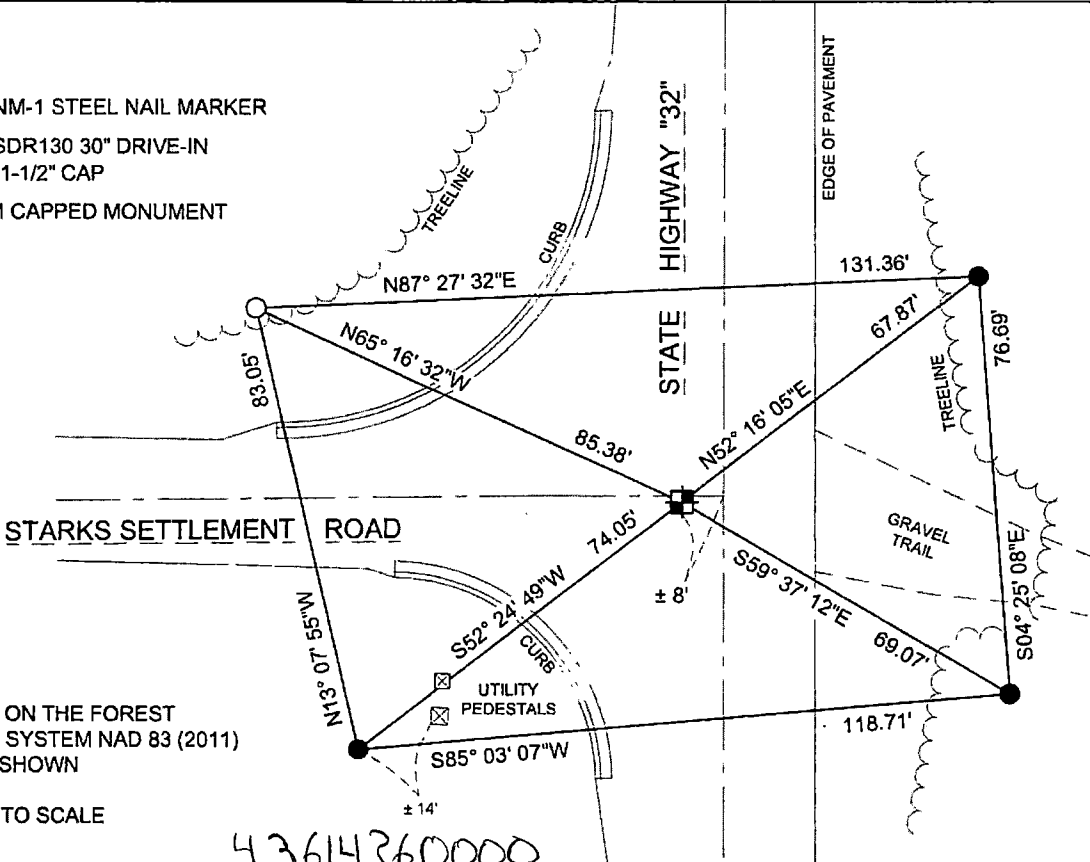
Registered Land Surveyor

DATE: OCTOBER 18TH, 2021

COMPANY RIVERSIDE LAND SURVEYING LLC

TIE SKETCH:

- ☒ - SET BERNTSEN SNM-1 STEEL NAIL MARKER
- ☐ - SET BERNTSEN SSDR130 30" DRIVE-IN MONUMENT WITH 1-1/2" CAP
- ☐ - FOUND ALUMINUM CAPPED MONUMENT



BEARINGS ARE BASED ON THE FOREST COUNTY COORDINATE SYSTEM NAD 83 (2011) AND REFERENCED AS SHOWN

THIS DRAWING IS NOT TO SCALE

43614360000

A-25

NO.

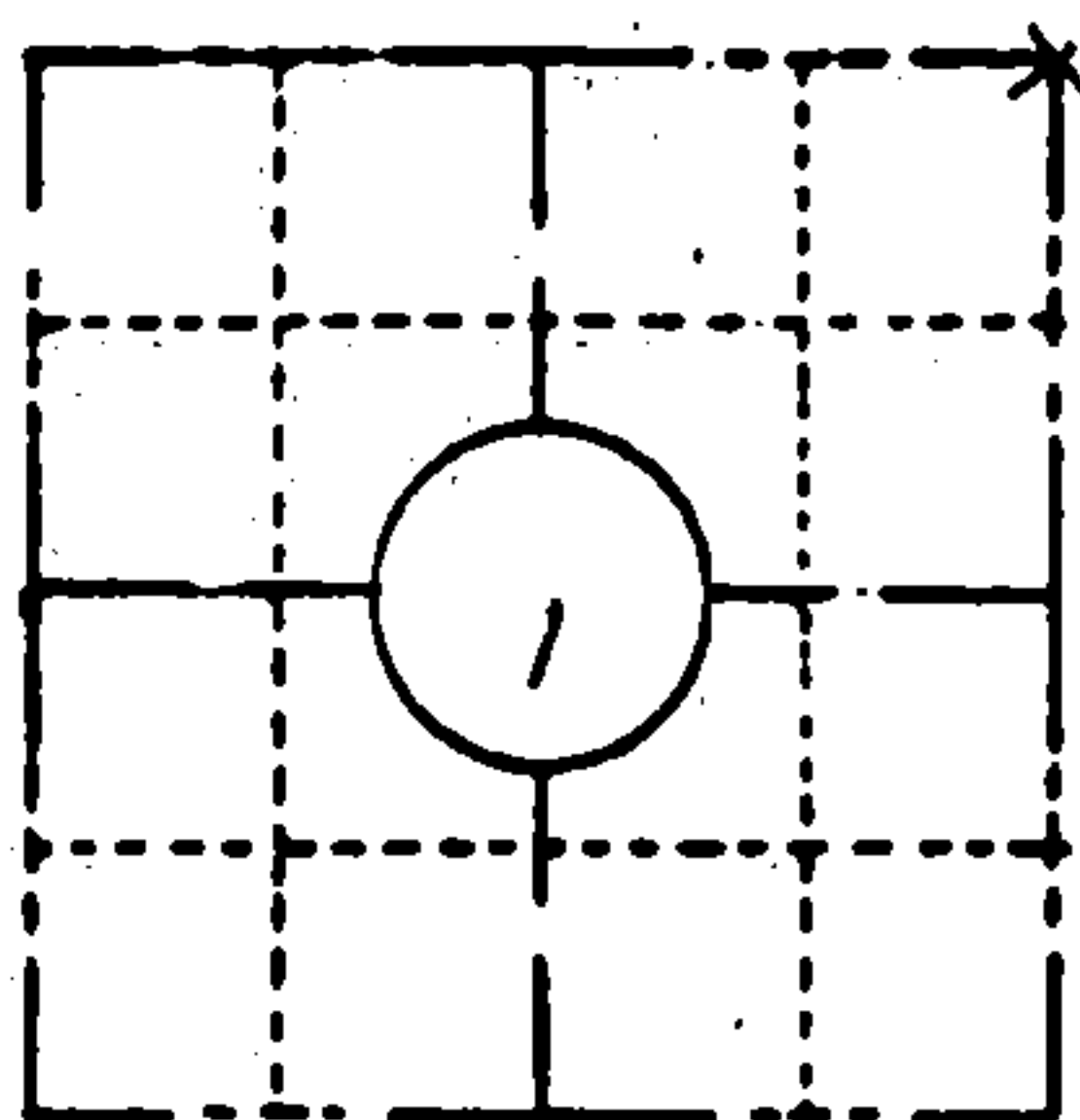
N

A-25

NO.

FIELD SURVEY NOTES  
PRESERVATION OF LANDMARKS  
(Pursuant to Section 59.635(7) Wisconsin Statutes  
E-D-707-69

COUNTY		
FOREST		
TOWN		
LAONA		
HIGHWAY		
STH 32		
SECTION	TOWNSHIP	RANGE
1	T 35 N	R 14 E
TYPE OF LANDMARK		
PK NAIL SET OVER SQ. IRON B		

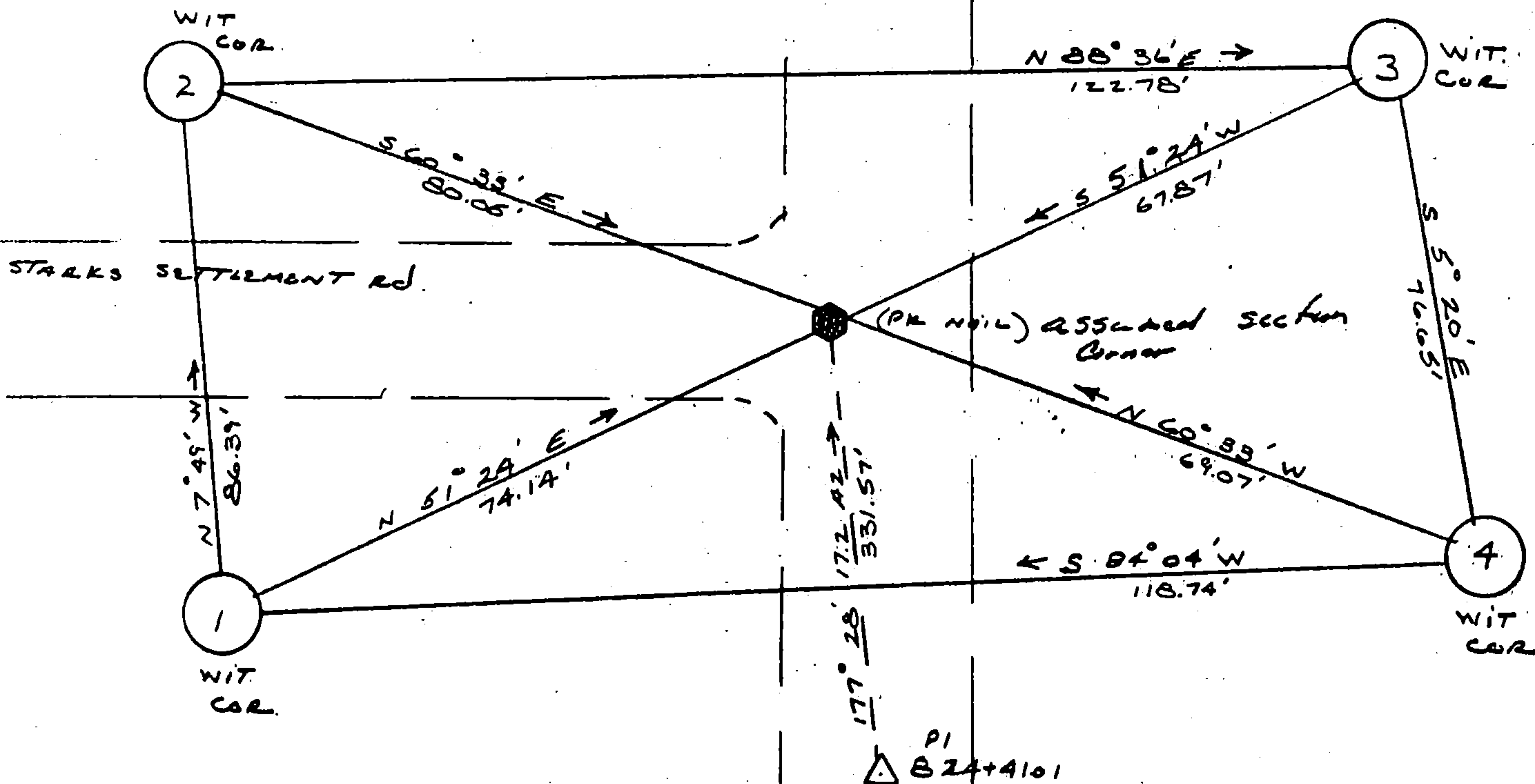


(Location of landmark indicated by "x")

SET BY USFS. BURIED IN SHOULDER OF HIGHWAY

This space for copy of field notes or ties to the above described landmarks

ALL WITNESS MONUMENTS ARE  
D.O.T. BERNSTEIN DRIVE/OLD MON.  
SET FLUSH WITH BEARING &  
DISTANCE TO CORNER STAMPED.  
Brgs are referenced to STM 32 @



FILED UNDER PROJECT 7

9131-03-70

DISTRICT OFFICE NUMBER <div style="text-align: center;">03-07</div>	CITY <div style="text-align: center;">12 HINELLANDER</div>	COUNTY <div style="text-align: center;">ONEIDA</div>
---	---	---

LOCATED OR ESTABLISHED BY

NAME ROBERT B. JOHNSON

TITLE SURVEY CREW CHIEF DATE 5-20-85  
under the direct supervision of  
MICHAEL NASS 500809

COUNTY CLERK'S OFFICE	
COUNTY OF <i>Forest</i>	WISCONSIN } 55
DATE RECEIVED FOR RECORD	DATE COPY SENT TO COUNTY SURVEYOR
<i>7-10-85</i>	<i>N/A</i>
SIGNATURE OF COUNTY CLERK	
<i>Dora C. James</i>	



CERTIFIED LAND CORNER RESTORATION

State of Wisconsin }  
County of Forest } ss.

I, Jean F. Resvick, do hereby certify that on the 7th day of October, 1965, I found evidence of the Northeast Section corner of Section 1 Township 35 North Range 14 East, Fourth Principal Meridian, as described hereon; and that from this evidence I established a new monument and accessories as described hereon to perpetuate the original location of this corner:

Description of original monument and accessories and subsequent restorations:

Survey in 1857 by Artemas Curtis  
75.00 chains North between Section 1 and 6, set township corner for townships 35 and 36 North, Ranges 14 and 15 East  
Hemlock 22, S25W, 61 links  
Hemlock 22, N85W, 35 links  
Yellow Birch 12, N32E, 32 links  
Yellow Birch 12, S45E, 26 links  
17.4 chains south enter swamp bears NE  
20.2 chains East enter swamp bears NW  
11.50 chains North enter open swamp bears East

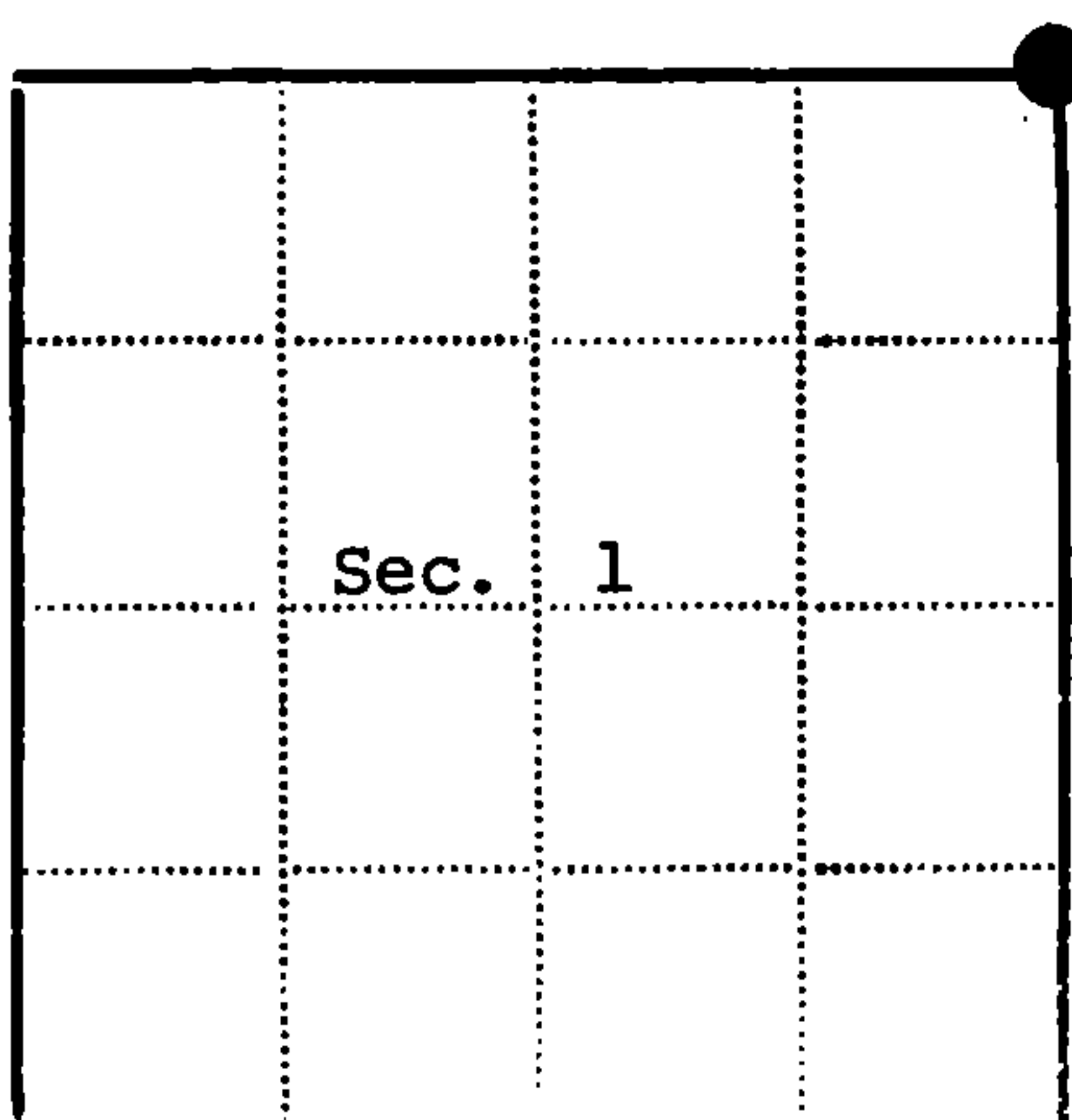
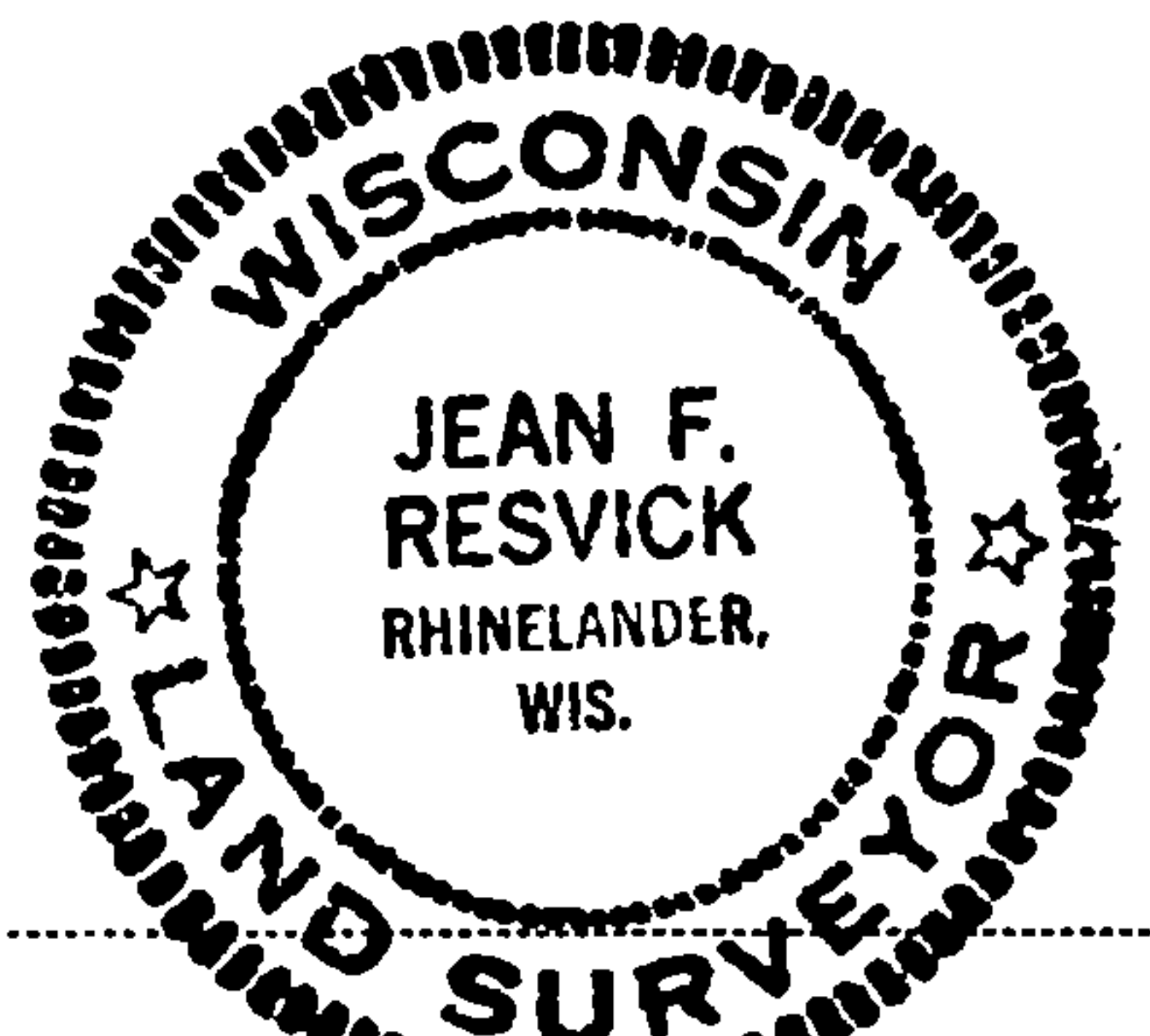
State Highway 32, survey of 1923 shows section corner 8 feet West of center line of Highway.

Description of corner evidence found:

"T" Road West  
Highway survey of 1923 shows section corner as being 8 feet West of center line road. Measurements from the North, South and East are in agreement, therefore, this position, being 8 feet West of the intersection of State Highway 32 and Town road West, is accepted as evidence of this original corner.

Description of monument and accessories I established to perpetuate the location of this corner:

At a point 8 feet West of the center line of intersection of "T" road West, set a 2 inch inside diameter galvanized iron pipe 30 inches long, flush with the surface of the blacktop road. At a point 128 feet East, on section line, set a 2 inch inside diameter galvanized iron pipe, 5 feet long, filled with concrete, flanged at bottom, for a witness corner to the section corner, with brass cap stamped: W.C., T36N, R14E, R15E, S36, S31, S1, S6, T35N, 128 feet, 1965, S-802



● - Corner monument restored  
□ -

Resident witnesses.....  
Dated at Rhinelander Wisconsin, this 14 day of January 1977.

Signature *Jean F. Resvick* Title Land Surveyor  
(County Surveyor, Registered Land Surveyor, or other duly authorized official)

Surveyors Registration No. S-802 DOCUMENT NUMBER 111432

Office of Register of Deeds County of Forest  
I hereby certify that the within instrument was filed in this office for record on the 13th day of May 1977, and was filed in Book No. Page No. of County Records.

Signature *Eugene Stetson* Title Register of Deeds

Township 35 North Range 14 East Section 1 Index No. A-25 Page No. 25