

!Attention!

This PLSS corner is in the process of being updated by Forest County. An updated Tie Sheet will be available for this corner soon.

Please contact Kayla at the Forest County Land Information Department for more information.

Contact Info:

715-478-1387 or Kayla.L@co.forest.wi.us

245866

FILED ON:
06/06/2025 03:37 PM
CORTNEY BRITTEN CLEEREMAN
REGISTER OF DEEDS
FOREST COUNTY WI
PAGES: 1

FOREST COUNTY U.S. PUBLIC LAND
SURVEY MONUMENT LOCATION RECORD

☒ LANDMARK

☐ BENCHMARK

FOUND ☒

SET ☐

RESET ☒

RE-TIED ☒

CORNER IDENTITY: BERNTSEN SNM-1 STEEL NAIL MARKER

FOREST COUNTY COORDINATE: N: 565783.148
E: 894210.642

ELEVATION-(FEET): DATUM: NAD83 (2011)

WEATHER: SUNNY

DATE OF SURVEY: 8/10/2021 TEMPERATURE: 70 °F

SURVEY PARTY: KEITH WALKOWSKI & COLLIN MARQUARDT

BASIS FOR MONUMENT LOCATION:
(DESCRIBE METHOD OF SURVEY AND CORNER AUTHENTICATION)

SEARCHED FOR THE EAST 1/4 CORNER OF SECTION 36 AND FOUND A 1-1/2" IRON PIPE AT THE INTERSECTION OF STATE HIGHWAY "32" & COUNTY ROAD "H". FOUND ONE TIE TO THE WEST FROM 1958 STAMPED 33' TO CORNER THAT WAS LEANING. ACCEPTED THE FOUND IRON PIPE AS THE CORNER. SET A BERNTSEN SNM-1 STEEL NAIL MARKER AT THE CORNER LOCATION UPON THE COMPLETION OF THE STATE HIGHWAY "32" RESURFACING PROJECT AND SET ADDITIONAL TIES TO PERPETUATED THE CORNER LOCATION AS SHOWN BELOW.

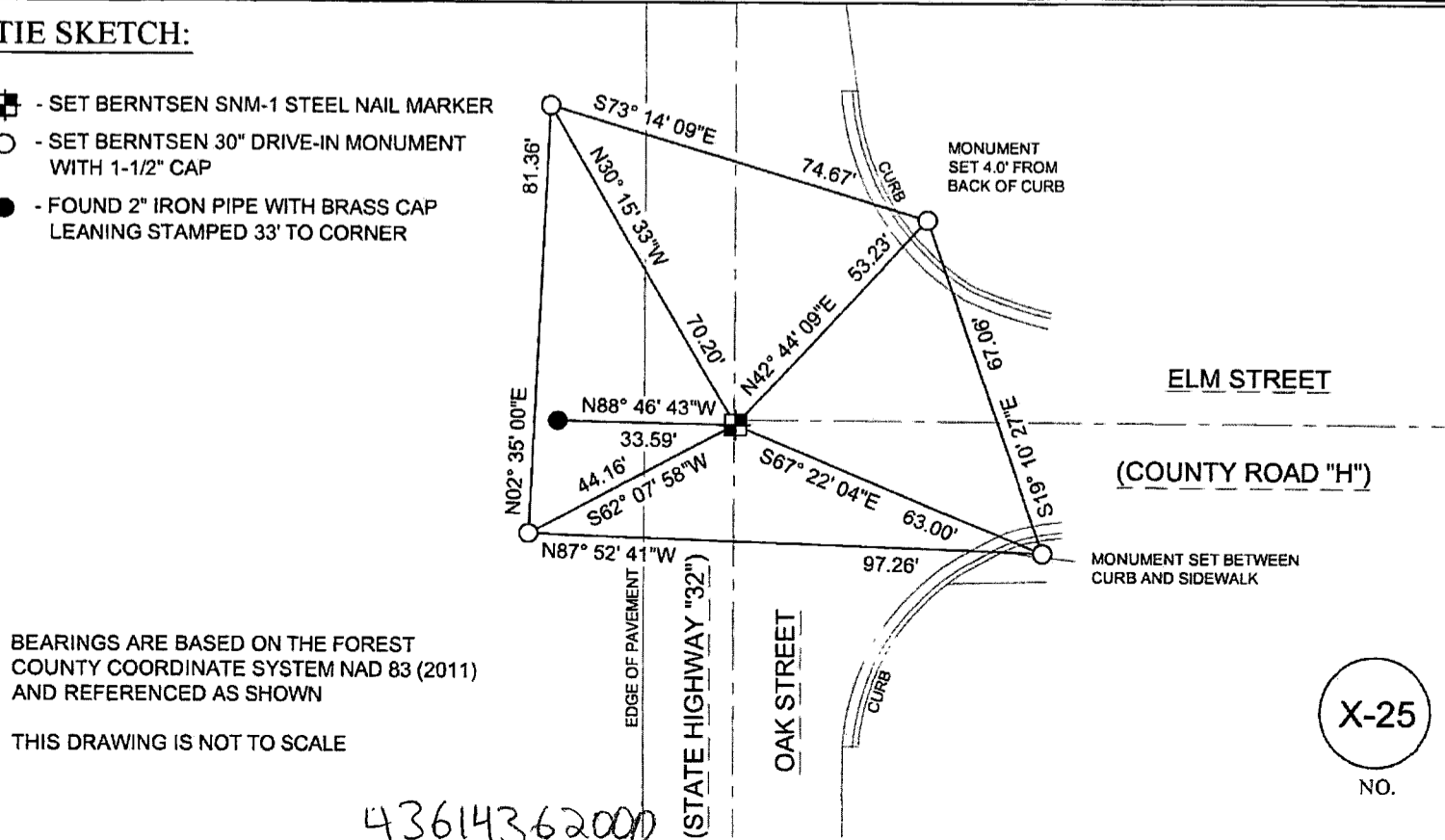
COMPANY RIVERSIDE LAND SURVEYING LLC

TIE SKETCH:

- SET BERNTSEN SNM-1 STEEL NAIL MARKER
- SET BERNTSEN 30" DRIVE-IN MONUMENT WITH 1-1/2" CAP
- FOUND 2" IRON PIPE WITH BRASS CAP LEANING STAMPED 33' TO CORNER

BEARINGS ARE BASED ON THE FOREST COUNTY COORDINATE SYSTEM NAD 83 (2011) AND REFERENCED AS SHOWN

THIS DRAWING IS NOT TO SCALE



43614362000

X-25

NO.

127710

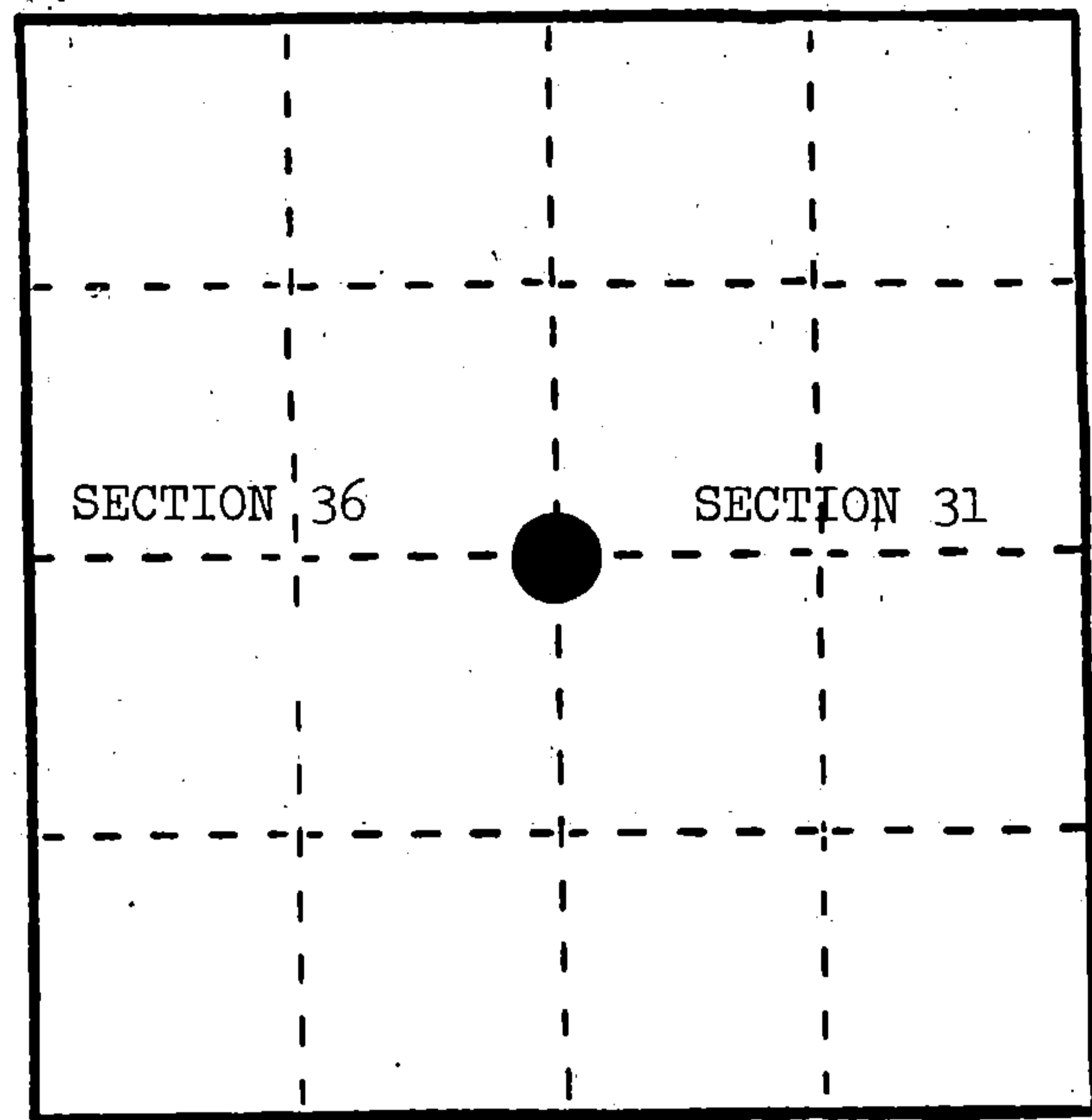
U. S. PUBLIC LAND SURVEY MONUMENT RECORD

INSTRUCTIONS: This record shall show the location of the corner and shall include all of the following nine elements (a through i).

- (a) Identify the corner by reference to the U.S. public land survey system.

○ = Corner monument restored.

Quarter corner to Sections 31 and 36, T.36N., R.13-14E., Forest County, Wisconsin.



- (b) Describe any record evidence, monument evidence, occupational evidence, testimonial evidence or any other material evidence you considered, and whether the monument was found or placed.

In 1857, Alfred Millard set $\frac{1}{4}$ post at 40.00 chains with the following BTs: Hemlock, 10", S.85°E., 22 links; Hemlock, 12", N.65°W., 38 links.

In 1937, C. E. Walker set a 2" x 5' iron pipe with a brass cap.

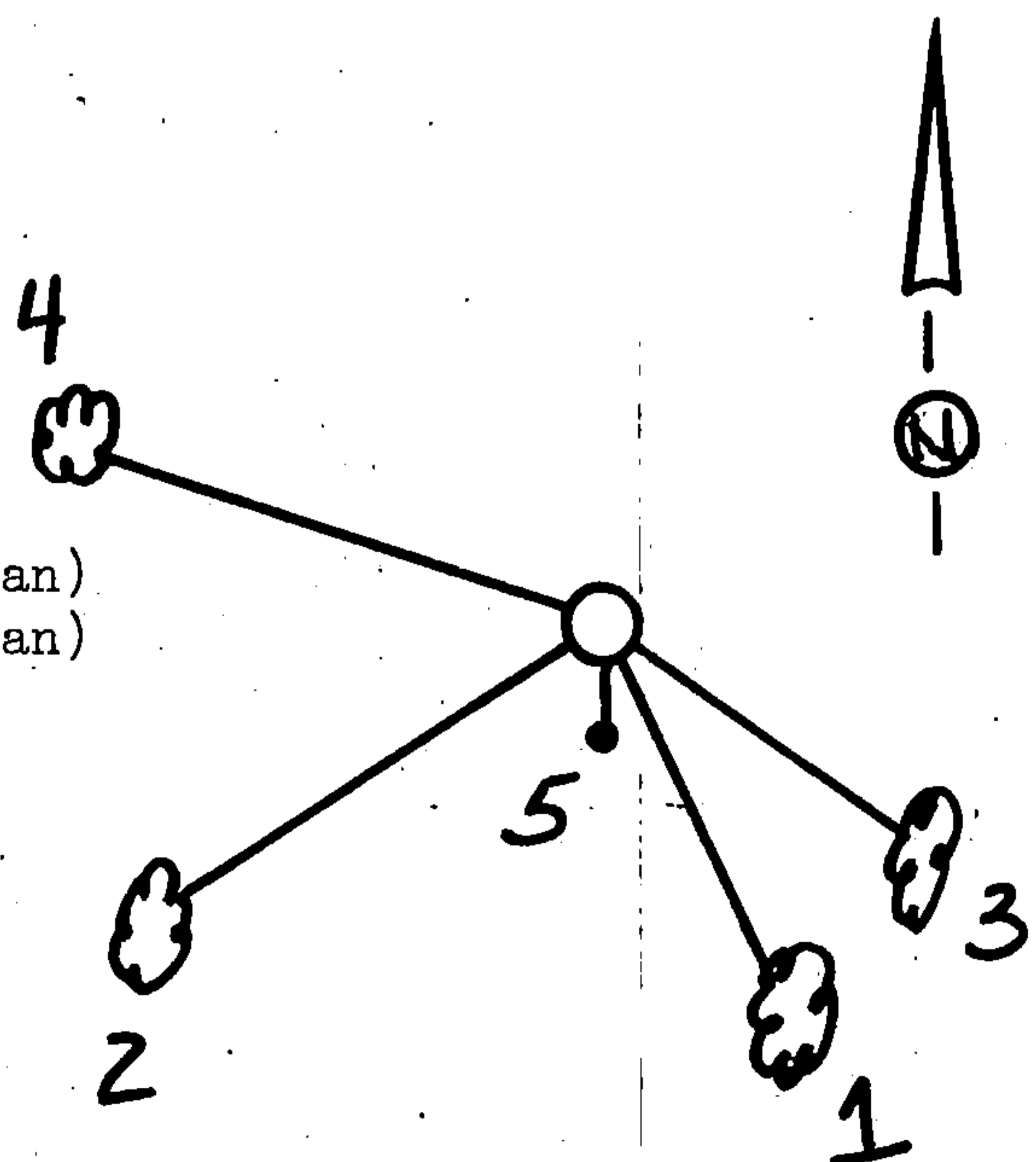
In 1975, Tom Arnott witnessed C. E. Walker's monument.

In 1982, Milo Stefan found C. E. Walker's brass cap and made two new BTs.

- (c) In the plan view drawing below, provide reference ties to at least 4 witness monuments, or, if the location is within a municipality, to at least 2 witness monuments. (Witness monuments shall be made of concrete, natural stone, iron or other equally durable material.) Describe witness monuments.

- (d) Show a plan view drawing depicting the relevant monuments and reference ties which is sufficient in detail to enable accurate relocation of the corner monument if the corner monument is disturbed. Indicate north.

1. Maple, 6", S.22°E., 14.95 feet (by Arnott)
2. Maple, 6", S.54°W., 17.18 feet (by Arnott)
3. Sugar Maple, 5", S.46°E., 20.21 feet (by Stefan)
4. Sugar Maple, 6", N.68°W., 30.90 feet (by Stefan)
5. Steel Sign Post, South, 1.30 feet



REGISTER'S OFFICE }
Forest County, Wis. }

Received for record this.....day
of.....A.D., 1985

2:05.....o'clock.....P.....M. and

recorded in Vol. CORNER RESTORATIONS

on page.....
Paul Archambault
REGISTER

- (e) Describe any material discrepancy between the location of the corner as restored or reestablished and the location of that corner as previously restored or reestablished by distance and direction. Show the discrepancy on the plan view drawing under (d), above. Show the distances between the corner as previously restored or reestablished and (1) the corner as restored or reestablished, and (2) to at least 2 of the witness monuments shown on the drawing in (d), above.

None.

- (f) Was the corner restored through acceptance of (1) an obliterated evidence location, or, (2) a found perpetuated location?

(2) a found perpetuated location.

- (g&h) Was the corner reestablished through lost corner proportionate methods? If so, show the method, including the directions and distances to other public land survey corners used as evidence or used for proportioning in determining the corner location?

No.

Affix Land Surveyor Seal



- (i) I, Milo E. Stefan
(Type or print name) certify that the corner location shown on this record was determined by me or under my direction and control and that this U.S. Public Land Survey Monument Record is correct and complete to the best of my knowledge and belief.

Milo E. Stefan
Signature

3/20/85
Date