

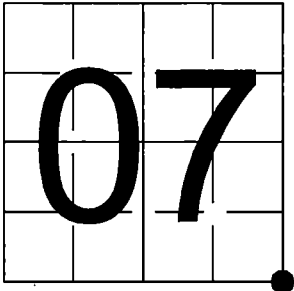
FILED ON:
12/10/2025 10:02 AM
CORTNEY BRITTEN CLEEREMAN
REGISTER OF DEEDS
FOREST COUNTY WI
PAGES: 1

U.S. PUBLIC LAND SURVEY
MONUMENT RECORD - ADDENDUM

NOTE: This form is intended and designed to fulfill all requirements of Wisconsin Administrative Code, Chapter A-E 7.08 U.S. Public Land Survey Monument Record (3) (a-i)

A-E 7.08(3)(a) Identity of corner:
Southeast Corner Section 07,
Township 36 North, Range 15 East
of the Fourth Principal Meridian,
Town of Laona, Forest County, Wisconsin

WISCRS - FOREST COUNTY
N: 584,158.198 USft (XXX,XXX.XXX)
E: 899,669.626 USft (XXX,XXX.XXX)
Datum: NAD83 (2011)
GNSS Method RTN
GNSS Control WISCRS VRS



The coordinate value shown has been verified by the average of two or more GPS observations at a markedly different time. Coordinates shown in parenthesis are previously published values.

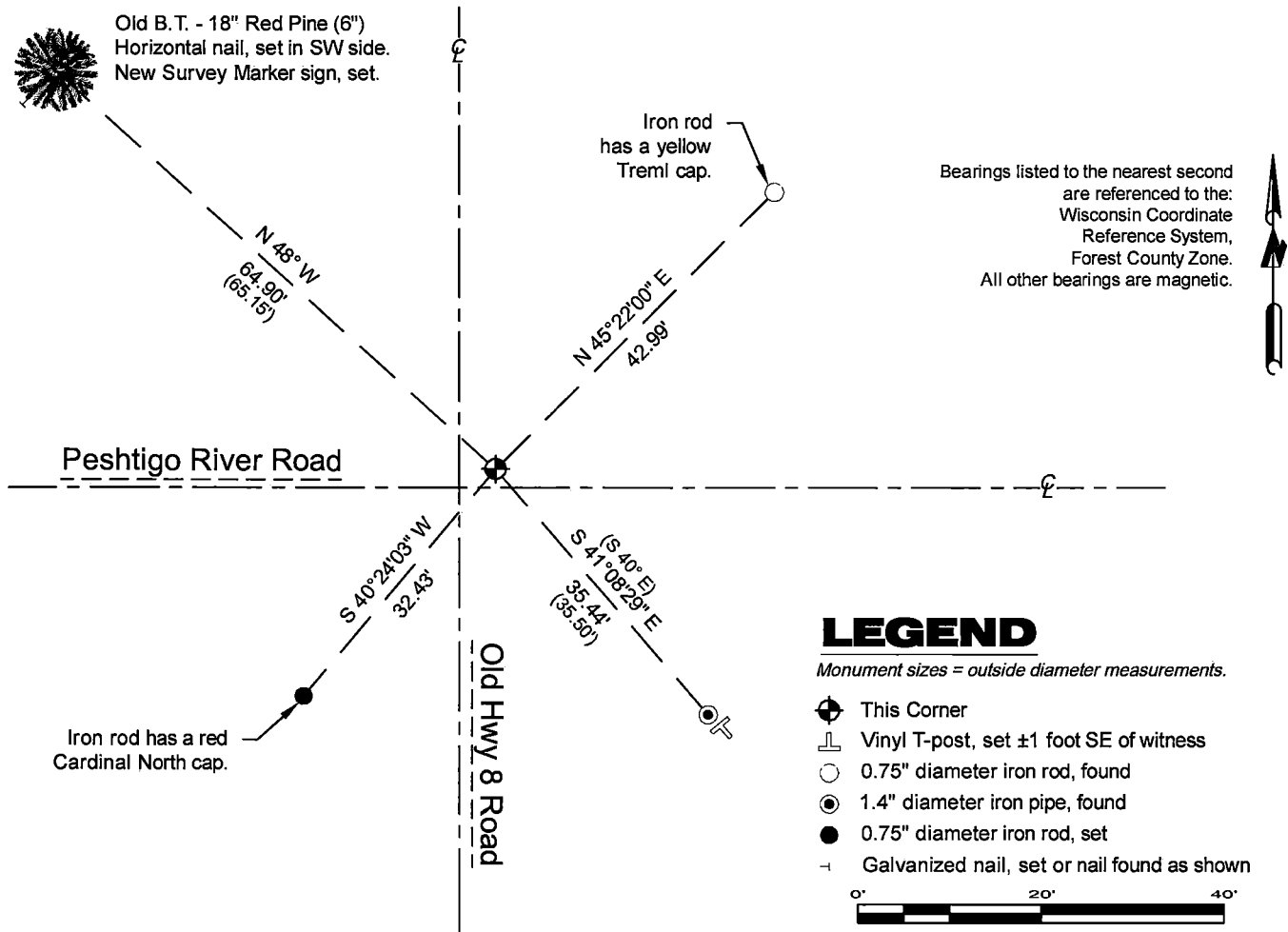
A-E 7.08(3)(b)

Original Surveyor: James McBride - July 17, 1859 to July 25, 1859
Hemlock 16 - N 34° W, 58 Links, Hemlock 8 - N 43° E, 17 Links, Fir 16, S 62° E, 19 Links, Elm 14 - S 5° W, 23 Links

- September 24, 2004 - Surveyor 2197 - Michael A. Trembl - indicates this position as "existing P.K. nail" on county record Map #361508-20040924.
- July 22, 2021 - Surveyor 809-8 - Michael S. Hess - indicates this position as "RR spike" on county record Map #361508-20210722.

September 24, 2025 - I found a railroad spike near the intersection of Old HWY 8 Road and Peshtigo River Road. I also found 1 of Garske's bearing trees as well as a 1.4" diameter iron pipe Garske set as a reference monument.
As the bearings and distances from the railroad spike to the existing witnesses matched, I accepted the railroad spike as the corner location.
The monument is ±4' east of the Old HWY 8 centerline, and ±2' north of the Peshtigo River Road centerline.
I established 2 new reference monuments as shown below.

A-E 7.08(3)(c)(d) Plan view of corner with references to at least 4 witness monuments.



A-E 7.08(3)(e) 1859 Surveyor set a post, 1994 Surveyor found and accepted a P.K. nail, as did 2004 surveyor. 2021 surveyor found a railroad spike, as did I in 2025.

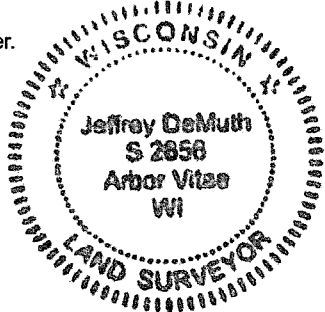
A-E 7.08(3)(f) I accept this monument in good faith as a FOUND PERPETUATED LOCATION of the corner.
A-E 7.08(3)(g)(h) This corner was not determined through lost-corner-proportionate methods.

A-E 7.08(3)(i) I, Jeffrey L. DeMuth, Professional Land Surveyor No. S-2656, hereby certify that the corner location on this record was determined by me or under my direction and control, and that this U.S. Public Land Survey Monument Record is correct and complete to the best of my knowledge, and belief.

SIGNATURE

Jeffrey L. DeMuth

October 3, 2025
DATE



43615070000

43615070000

J5

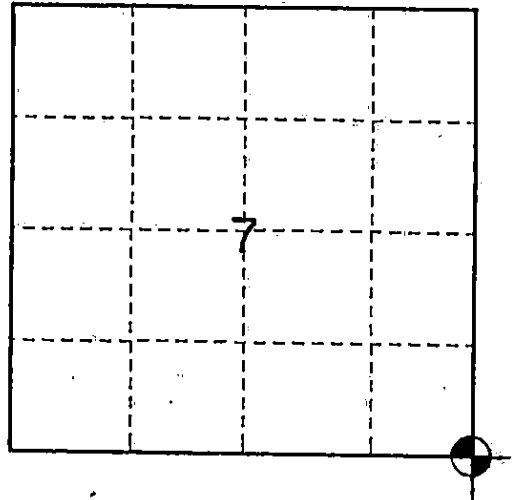
U. S. PUBLIC LAND SURVEY MONUMENT RECORD

INSTRUCTIONS:

This record shall show the location of the corner and shall include all of the following nine elements (a through i).

- (a) Identify the corner by reference to the U.S. public land survey system.
 ○ = Corner monument restored.

Section corner common to Sections 7, 8,
 17 & 18, T36N, R15E



- (b) Describe any record evidence, monument evidence, occupational evidence, testimonial evidence or any other material evidence you considered, and whether the monument was found or placed.

In 1859, James McBride set a wooden post from which he established the following BT's:

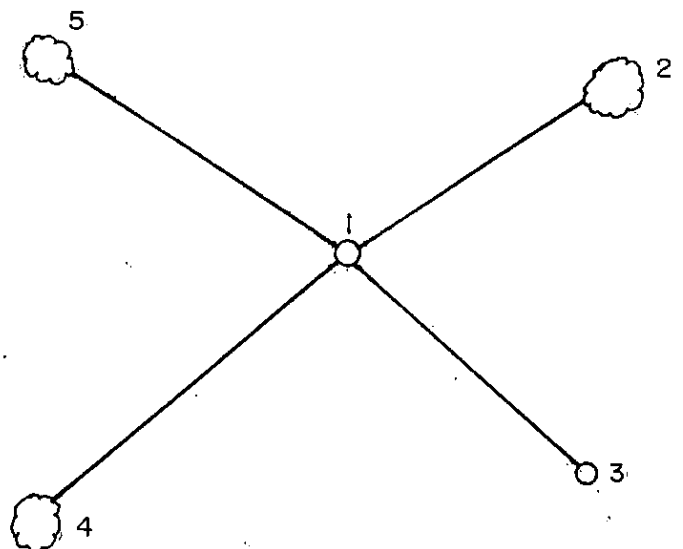
Hemlock 8" - N43°E - 17 links
 Fir 16" - S62°E - 19 links
 Elm 14" - S5°W - 23 links
 Hemlock 16" - N34°W - 58 links

In 1979, Jean Resvick, RLS #802, found an iron pipe, 1.7 feet below the road surface and replaced it with a 2" I.D. galvanized iron pipe, 3 feet long with a stamped brass cap. He established new bearing trees and recorded the corner in Forest County - Document No. 118069.

In 1993, John Garske found a P.K. nail in the paved surface at the road surface above the pipe, set by Resvick, with additional accessories needed.

- (c) In the plan view drawing below, provide reference ties to at least 4 witness monuments, or, if the location is within a municipality, to at least 2 witness monuments. (witness monuments shall be made of concrete, natural stone, iron or other equally durable material.)

- (d) Show a plan view drawing depicting the relevant monuments and reference ties which is sufficient in detail to enable accurate relocation of the corner monument if the corner monument is disturbed. Indicate north.



- 1- P.K. nail found at corner position.
- 2- Basswood 40", N59°E - 35.60 feet, (13' tall-dead). (existing)
- 3- 1" I.D. galvanized pipe, 30" long, S40°E - 35.50 feet. (new)
- 4- Sugar 19" - S43°W - 58.15 feet. (existing)
- 5- Red pine 6" - N48°W - 65.15 feet. (existing)

- (a) Describe any material discrepancy between the location of the corner as restored or reestablished and the location of that corner as previously restored or reestablished by distance and direction. Show the discrepancy on the plan view drawing under (d), above. Show the distances between the corner as previously restored or reestablished and (1) the corner as restored or reestablished, and (2) to at least 2 of the witness monuments shown on the drawing in (d), above.

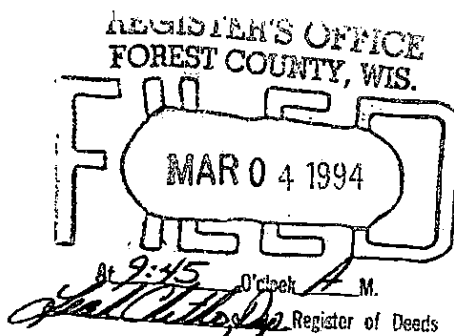
None

- (f) Was the corner restored through acceptance of (1) an obliterated evidence location, or, (2) a found perpetuated location?

2) A found perpetuated location

- (g & h) Was the corner reestablished through lost corner proportionate methods? If so, show the method, including the directions and distances to other public land survey corners used as evidence or used for proportioning in determining the corner location?

No



- (1) I, John R. Garske, S-1685

(type or print name) certify that the corner location shown on this record was determined by me or under my direction and control and that this U.S. Public Land Survey Monument Record is correct and complete to the best of my knowledge and belief.

John R. Garske

Signature

1-18-94

Date

CERTIFICATE READY FOR FILING:

Sue Vap

District Ranger

CERTIFIED LAND CORNER RESTORATION

State of Wisconsin

County of Forest

} ss.

I, Jean F. Resvick, do hereby certify that on the 24 day of September, 19 79, I found evidence of the Southwest Section corner of Section 8 Township 36 North, Range 15 East, Fourth Principal Meridian, as described hereon; and that from this evidence I established a new monument and accessories as described hereon to perpetuate the original location of this corner:

Description of original monument and accessories and subsequent restorations:

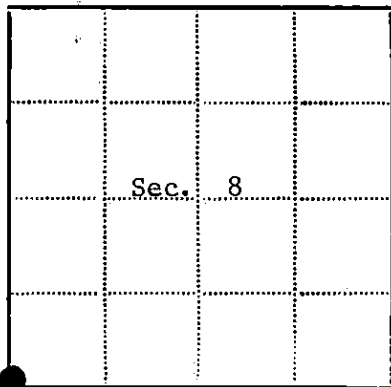
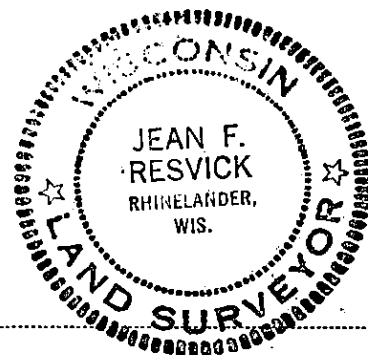
Surveyed in 1859 by James McBride
80.0 chains north between sections 17 and 18, set post
Hemlock 8, N43E, 17 lks.
Fir 16, S62E, 19 lks.
Elm 14, S5W, 23 lks.
Hemlock 16, N34W, 58 lks.

Description of corner evidence found:

Iron pipe, 1.7 feet below surface of road, on north side of east-west road and centerline of north-south road. North-south road is old Highway 8. Iron pipe is a section of well point 3.4 feet long, the top of which was near the natural ground surface.

Description of monument and accessories I established to perpetuate the location of this corner:

Replace iron pipe with 2 inch inside diameter galvanized iron pipe, 3 feet long, filled with concrete, 0.6 feet below surface of road, with brass cap stamped: T36N, R15E, S7, S8, S18, S17, 1979, S-802
Blazed and scribed the following new bearing trees:
Basswood 39, N60E, 36.06 feet
Maple 18, S45W, 58.00 feet
Red Pine 5, N48W, 64.93 feet



● - Corner monument restored

□ -

Resident witnesses.....

Dated at Rhineland Wisconsin, this 25 day of September 19 79.

Signature Jean F. Resvick Title Land Surveyor
(County Surveyor, Registered Land Surveyor, or other duly authorized official)

Surveyors Registration No. S-802 DOCUMENT NO. **118069**

Office of Register of Deeds County of Forest

I hereby certify that the within instrument was filed in this office for record on the 9th day of June 19 80, and was filed in Book No. _____ Page No. _____ of County Records.

Signature Sharon Mueller Title Deputy

Township 36 North, Range 15 East, Section 8, Index No. J-5, Page No. _____

43615070000