

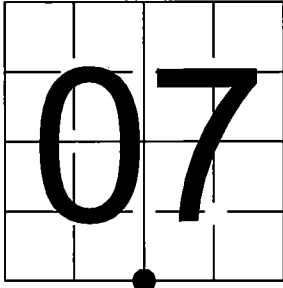
FILED ON:
12/10/2025 10:02 AM
CORTNEY BRITTEN CLEEREMAN
REGISTER OF DEEDS
FOREST COUNTY WI
PAGES: 1

U.S. PUBLIC LAND SURVEY
MONUMENT RECORD

NOTE: This form is intended and designed to fulfill all requirements of Wisconsin Administrative Code, Chapter A-E 7.08 U.S. Public Land Survey Monument Record (3) (a-i)

A-E 7.08(3)(a) Identity of corner:
South 1/4 Corner Section 07,
Township 36 North, Range 15 East
of the Fourth Principal Meridian,
Town of Laona, Forest County, Wisconsin

WISCRS - FOREST COUNTY
N: 594,162.999 USft (XXX,XXX.XXX)
E: 896,977.149 USft (XXX,XXX.XXX)
Datum: NAD83 (2011)
GNSS Method RTN
GNSS Control WISCRS VRS



The coordinate value shown has been verified by the average of two or more GPS observations at a markedly different time. Coordinates shown in parenthesis are previously published values.

A-E 7.08(3)(b)

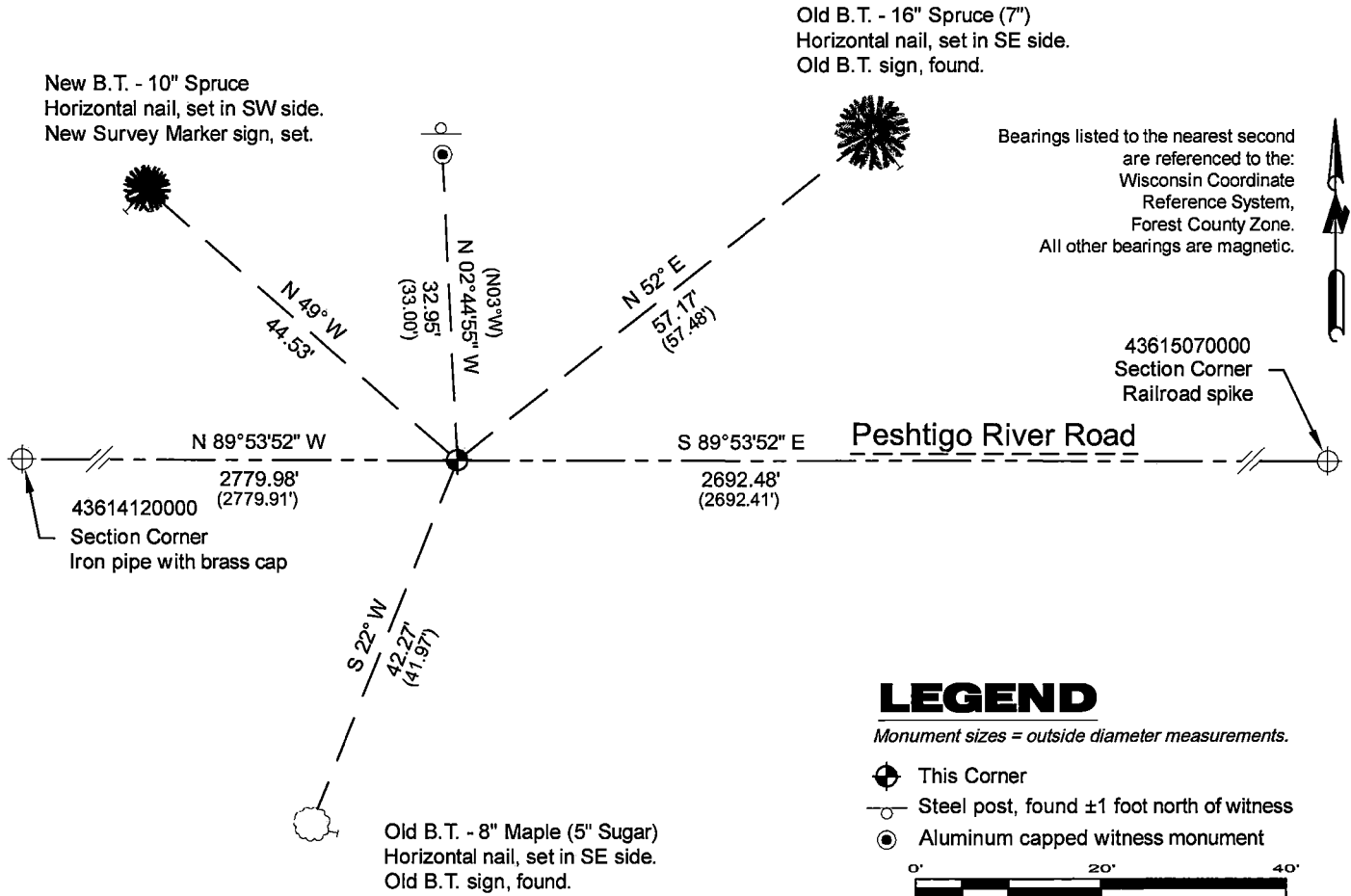
Original Surveyor: James McBride - July 17, 1859 to July 25, 1859
Tamarac 8 - N 16° E, 23 Links, Tamarac 10 - S 52° W, 30 Links

See previous U.S. Public Land Survey Monument Record - J-3 - December 12, 1993 - Surveyor 1685 - John R. Garske - THENCE:

- August 17, 2005 - Surveyor 2197 - Michael A. Tremi - indicates this position as "existing railroad spike" on county record Map #361507-20050817 & #361507-20050817A.
- June 25, 2017 - Surveyor 809-8 - Michael S. Hess - indicates this position as "RR spike" on county record Map #361507-20170625.

September 24, 2025 - I did not find Garske's railroad spike. I did find his reference monument to the north, and 2 of his bearing trees.
October 3, 2025 - I set a Berntsen Survey Mark steel spike with a 1" diameter head at the corner location. I used Garske's 3 remaining witnesses, as well as the section corners east and west to establish this position. The monument is ±0.40 feet north of the Peshtigo River Road centerline.
I established 1 new reference monuments as shown below.

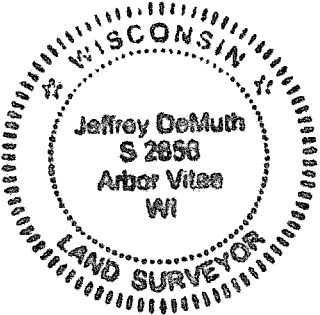
A-E 7.08(3)(c)(d) Plan view of corner with references to at least 4 witness monuments.



A-E 7.08(3)(e) 1859 Surveyor set a post, 1993 Surveyor set a railroad spike and witnesses, subsequent surveyors found the same. I set a steel Berntsen Survey Mark spike from available evidence in 2025.

A-E 7.08(3)(f) I restored the corner through ACCEPTANCE OF AN OBLITERATED LOCATION.
A-E 7.08(3)(g)(h) This corner was previously determined through lost-corner-proportionate methods.

A-E 7.08(3)(i) I, Jeffrey L. DeMuth, Professional Land Surveyor No. S-2656, hereby certify that the corner location on this record was determined by me or under my direction and control, and that this U.S. Public Land Survey Monument Record is correct and complete to the best of my knowledge, and belief.



SIGNATURE

October 3, 2025
DATE

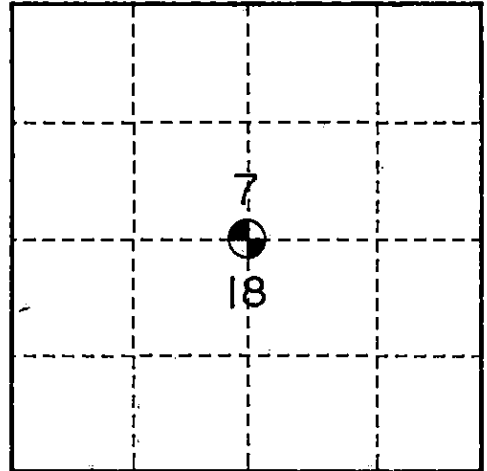
U. S. PUBLIC LAND SURVEY MONUMENT RECORD

INSTRUCTIONS:

This record shall show the location of the corner and shall include all of the following nine elements (a through i).

- (a) Identify the corner by reference to the U.S. public land survey system.
 ○ = Corner monument restored.

Quarter corner common to Sections 7 & 18,
 T36N, R15E, 4th P.M., Forest County, WI



- (b) Describe any record evidence, monument evidence, occupational evidence, testimonial evidence or any other material evidence you considered, and whether the monument was found or placed.

Original survey by James McBride, Deputy Surveyor, in 1859.

Original Bearing Trees:

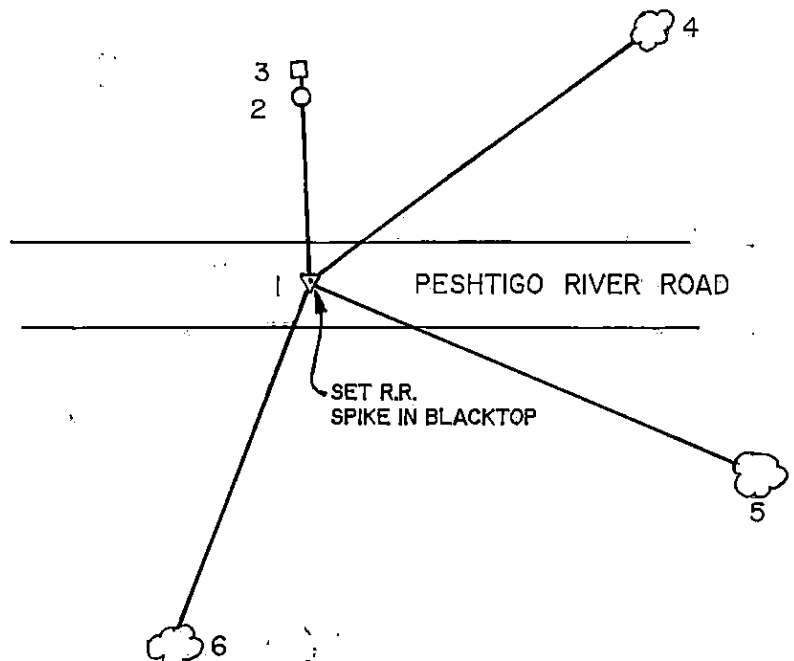
Tamarack 8" - N16°E - 23 links
 Tamarack 10" - S52°W - 30 links

1993- I found no evidence to recover the corner. The corner position falls in the center-line of a paved county road. I set railroad spike with a punch mark using single proportionate measurements to replace lost corner. I made the following new accessories as noted below.

- (c) In the plan view drawing below, provide reference ties to at least 4 witness monuments, or, if the location is within a municipality, to at least 2 witness monuments. (Witness monuments shall be made of concrete, natural stone, iron or other equally durable material.)

- (d) Show a plan view drawing depicting the relevant monuments and reference ties which is sufficient in detail to enable accurate relocation of the corner monument if the corner monument is disturbed. Indicate north.

1. Set railroad spike in center-line Peshtigo River Road
2. Set 2 1/2" x 36" aluminum pipe monument at witness corner N03°W - 33.00 feet
3. Steel sign post - N03°W - 34.06 feet
4. Spruce 7" - N52°E - 57.48 feet
5. Spruce 12" - S68°E - 75.26 feet
6. Sugar 5" - S22°W - 41.97 feet



(e) Describe any material discrepancy between the location of the corner as restored or reestablished and the location of that corner as previously restored or reestablished by distance and direction. Show the discrepancy on the plan view drawing under (d), above. Show the distances between the corner as previously restored or reestablished and (1) the corner as restored or reestablished, and (2) to at least 2 of the witness monuments shown on the drawing in (d), above.

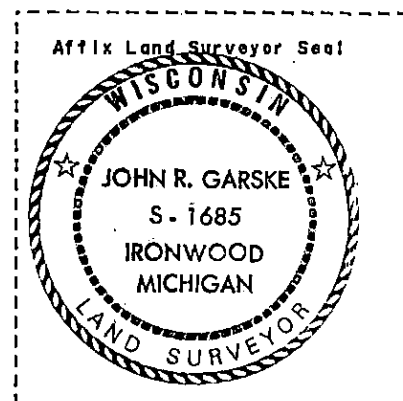
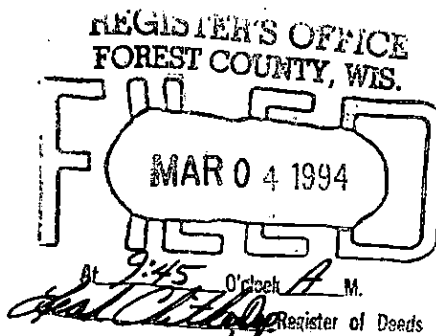
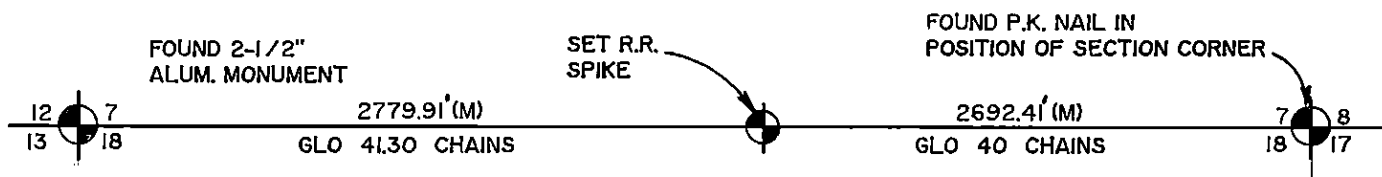
None

(f) Was the corner restored through acceptance of (1) an obliterated evidence location, or, (2) a found perpetuated location?

No

(g & h) Was the corner reestablished through lost corner proportionate methods? If so, show the method, including the directions and distances to other public land survey corners used as evidence or used for proportioning in determining the corner location?

Single proportionate method



(1) I, John R. Garske, S-1685
(type or print name) certify that the corner location shown on this record was determined by me or under my direction and control and that this U.S. Public Land Survey Monument Record is correct and complete to the best of my knowledge and belief.

Signature

Date

CERTIFICATE READY FOR FILING:

District Ranger