

**!Attention!**

This PLSS corner is in the process of being updated by Forest County. An updated Tie Sheet will be available for this corner soon.

Please contact Kayla at the Forest County Land Information Department for more information.

Contact Info:

715-478-1387 or [Kayla.L@co.forest.wi.us](mailto:Kayla.L@co.forest.wi.us)



Stock No. 26273

158119

## U.S. PUBLIC LAND SURVEY MONUMENT RECORD

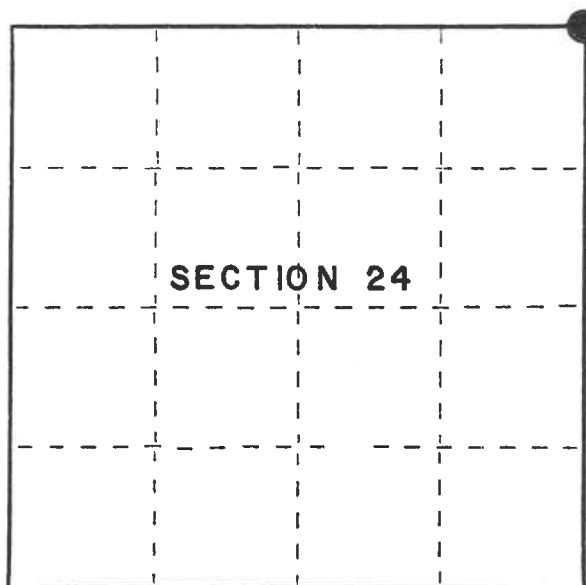
Index No. N-25

State of Wisconsin }  
 County of Forest } ss.

I, Gary L. Pisoni, do hereby  
 certify that on the 30th day  
 of March, 1994, I found  
 evidence of the Northeast  
 corner of Section 24  
 Township 36, North, Range  
16-17 East, Fourth Principal Meridian,  
 as described hereon; and that from this evidence  
 I established a new monument and accessories  
 as described hereon to perpetuate the original  
 location of this corner.

Resident witnesses:

.....  
 .....  
 .....



● = Corner monument restored.

## History of original corner establishment:

Original Government Survey in 1857 by Artemas Curtis. North between Sections 24 and 19 at 80.00 chains, set Section post from which the following bear: Sugar, 12", S 38° W, 25 lks; Sugar, 18", N 47° W, 69 lks; Sugar, 15", N 61° E, 37 lks; Yellow Birch, 26", S 34° E, 30 lks.

In 1936 and 1937, Marinette County surveyors, F.P. Gould and B.F. Hammes found a hardwood post and 2" iron pipe and found the original bearing tree stumps; Replaced iron pipe with a 4" dia. iron post in concrete with a Marinette County brass cap from which the following bear: Elm 6" N 11° W 167.5 lks.

## Description of corner evidence found:

Found the monument and accessories as described above:

Steel sign post North 0.7 feet

## Description of monument and accessories I established to perpetuate the original location of this corner.

Blazed and scribed the following new bearing trees: (Measurements taken to nail in side of tree)

Sugar Maple	7"	N 44° E	27.80 feet
Sugar Maple	7"	S 34° E	12.45 feet
Sugar Maple	8"	S 38° W	12.19 feet
Sugar Maple	8"	N 40° W	18.81 feet
Steel sign post		West	0.90 feet

Dated at Iron River, MI, this 26th day of May, 1995Signature Gary L. Pisoni Title Land Surveyor Registration No. S-1634  
 (County Surveyor, Registered Land Surveyor, or other duly authorized official)Office of Register of Deeds, County of Forest, I hereby certify that the within instrument was filed in this office for record on the 20th day of March, 1997 at 1:30 o'clock P. M.

(Register of Deeds)

By Gail J. Lawrence Deputy

43016130000

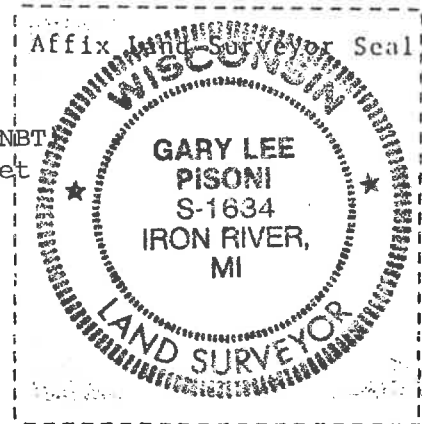
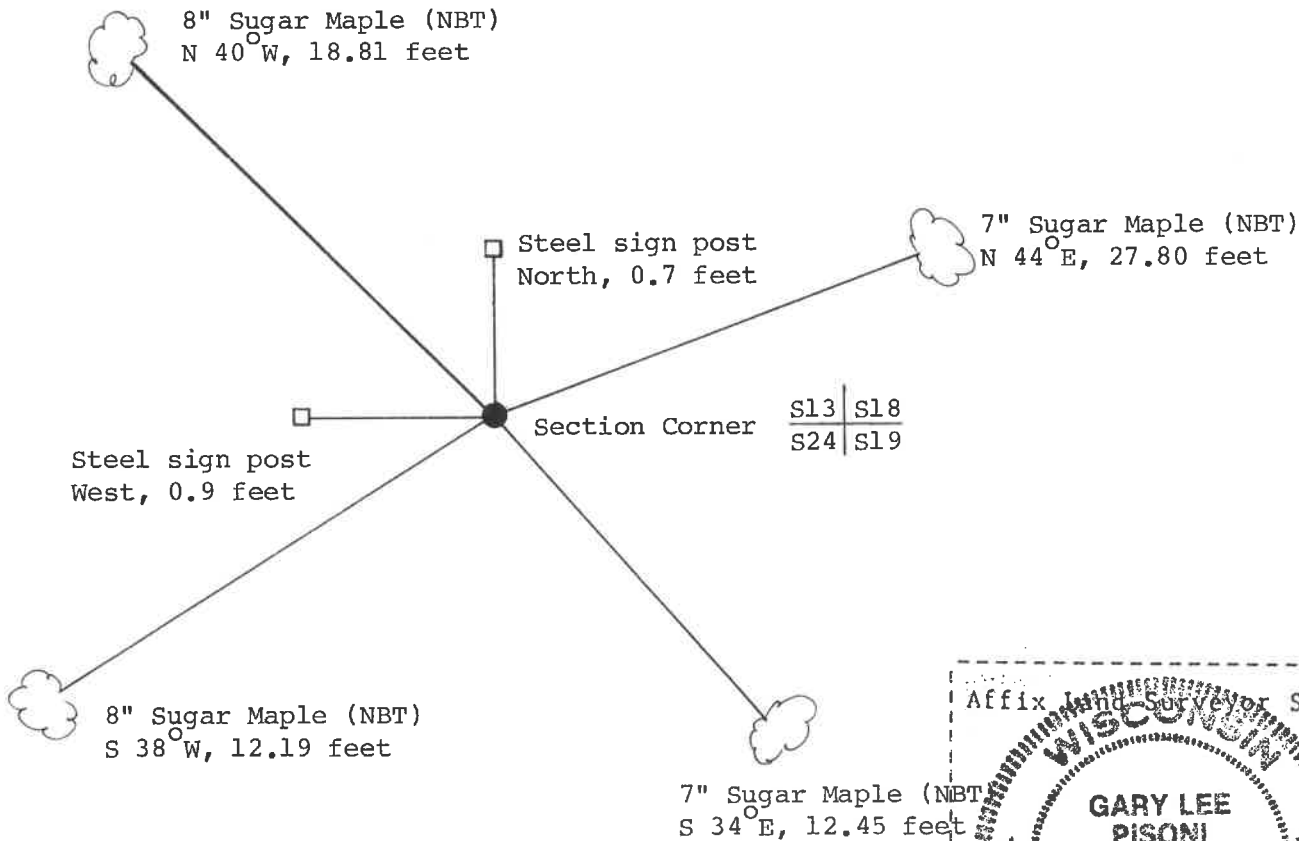
(e) Describe any material discrepancy between the location of the corner as restored or reestablished and the location of that corner as previously restored or reestablished by distance and direction. Show the discrepancy on the plan view drawing under (d), above. Show the distances between the corner as previously restored or reestablished and (1) the corner as restored or reestablished, and (2) to at least 2 of the witness monuments shown on the drawing in (d), above.

None

(f) Was the corner restored through acceptance of (1) an obliterated evidence location, or, (2) a found perpetuated location?

Restored through acceptance of a found perpetuated location.

(g&h) Was the corner reestablished through lost corner proportionate methods? If so, show the method, including the directions and distances to other public land survey corners used as evidence or used for proportioning in determining the corner location?



(i) I, Gary L. Pisoni  
(type or print name) certify that the corner location shown on this record was determined by me or under my direction and control and that this U.S. Public Land Survey Monument Record is correct and complete to the best of my knowledge and belief.

Signature

Date

10-2-95