

!Attention!

This PLSS corner is in the process of being updated by Forest County. An updated Tie Sheet will be available for this corner soon.

Please contact Kayla at the Forest County Land Information Department for more information.

Contact Info:

715-478-1387 or Kayla.L@co.forest.wi.us

CERTIFIED LAND CORNER RESTORATION

State of Wisconsin

County of Forest

ss.

I Jean F. Resvick, do hereby certify that on the 22nd day of July, 1968,
I found evidence of the East Quarter corner of Section 13
Township 36 North, Range 16 East, Fourth Principal Meridian, as described
hereon; and that from this evidence I established a new ~~monument~~ ~~and~~ accessories as described hereon to per-
petuate the ~~original~~ location of this corner:

Description of original monument and accessories and subsequent restorations:
Surveyed in 1857 by Artemas Curtis. 40 chains north set post for quarter corner between
sections 13 and 18.
Cedar 7", bears S18°W, 26 lks. Cedar 10", bears S38°E, 35 lks.
1 chain south leave swamp. 3 chains north leave swamp.
Marinette County survey in 1936 and 1937 by F. P. Gould and B. F. Hammes.
Set 4 inch diameter iron post with Marinette County brass cap.
from which: Ash 6", bears S42°E, 58.5 lks.
Hemlock 7", bears N83°E, 42.6 lks.
1.77 chains south leave swamp
4.78 chains north leave swamp

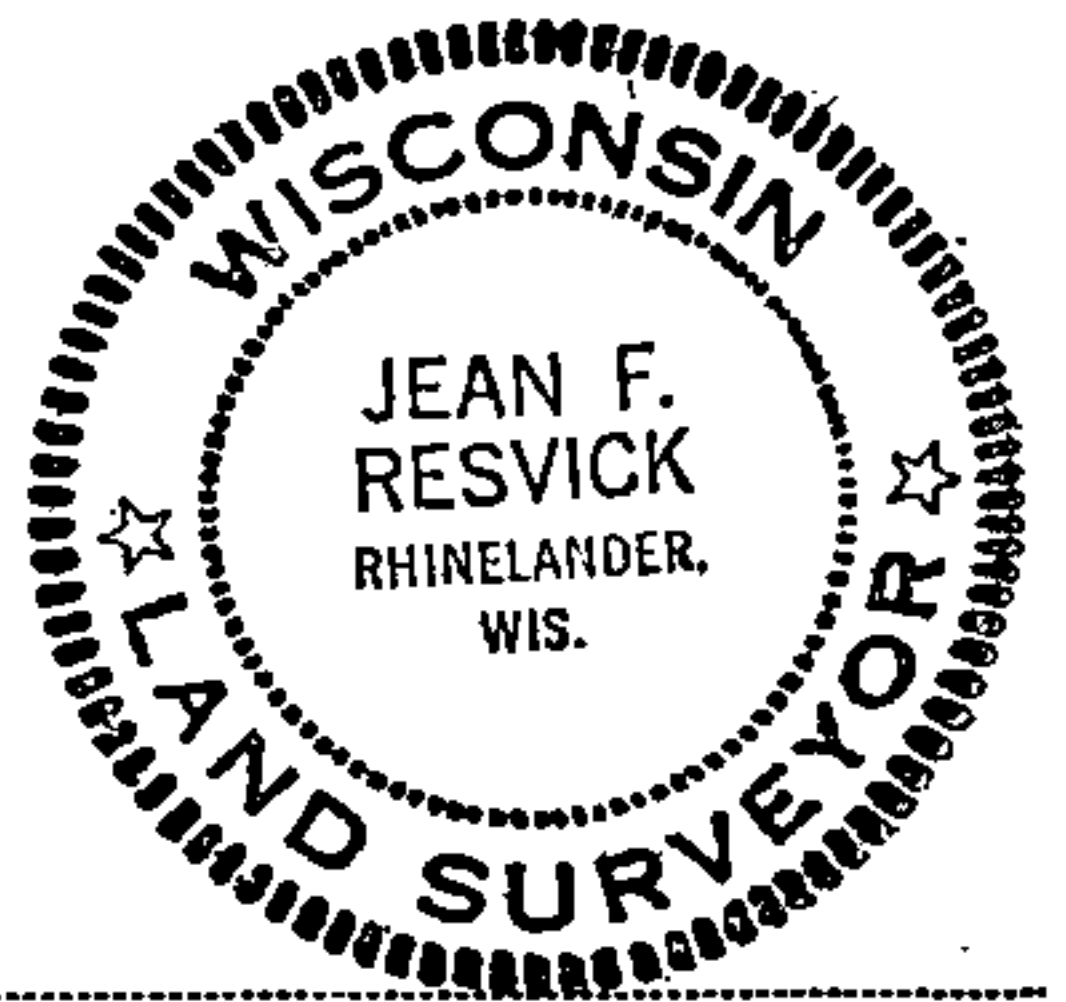
Description of corner evidence found:

Marinette County brass cap on 4 inch diameter iron post.
Fallen Hemlock, scribing visible, bears N83°E, 28.1 ft.

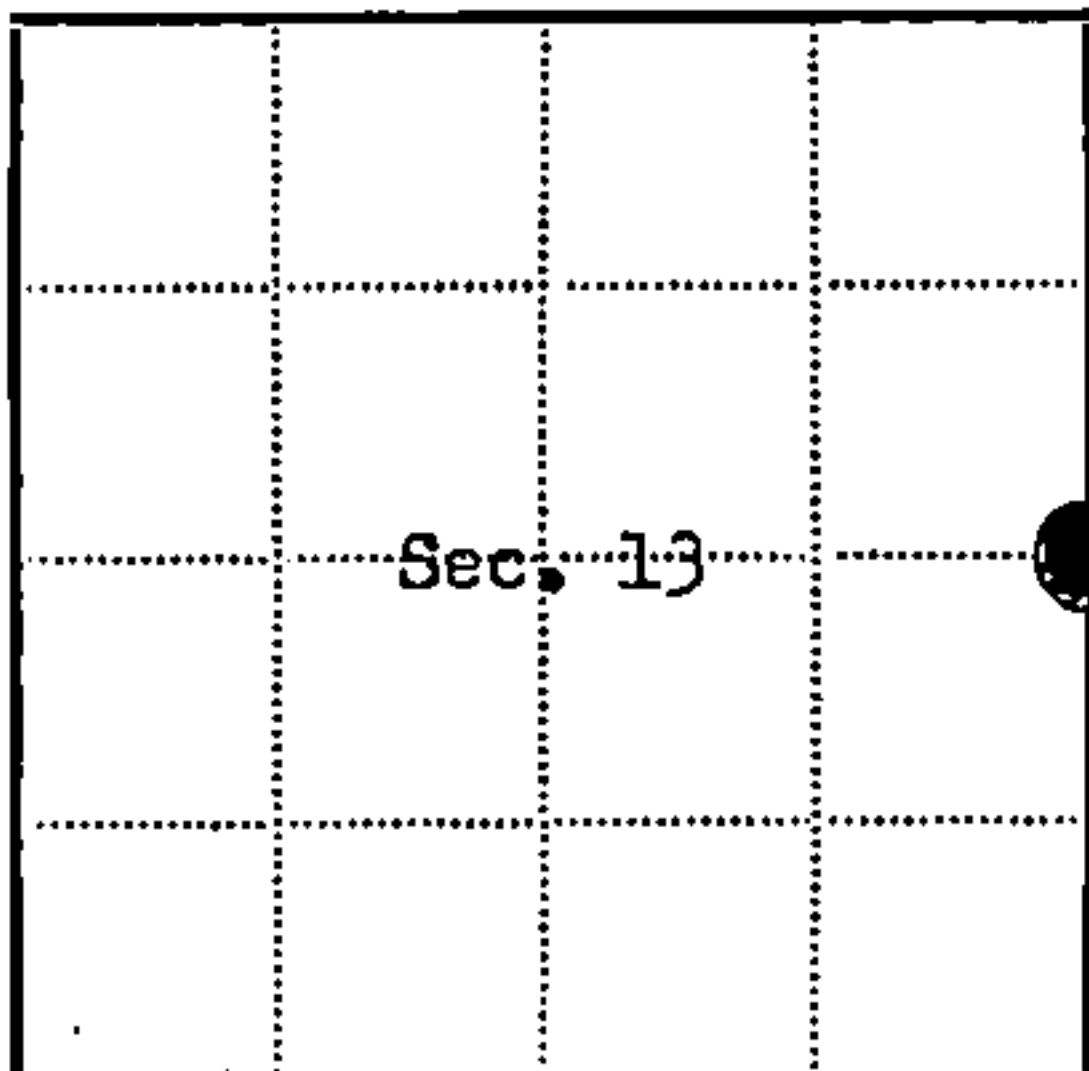
Description of ~~monument and~~ accessories I established to perpetuate the ~~original~~ location of this corner:

I drove more stobs around monument to hold it in swamp.
Blazed and scribed the following new bearing trees:

Ash 5", bears N36°W, 34.90 ft. or 52.879 lks.
Spruce 9", bears N22°E, 44.13 ft. or 66.864 lks.
Set 4 x 4 cedar post N34°E, a distance of 1.2 feet from monument.



43616132074



● = Corner monument restored

□ =

Resident witnesses.....

Dated at Rhineland Wisconsin, this 18th day of Feb. 1969.Signature Jean F. Resvick Title Cadastral Surveyor
(County Surveyor, Registered Land Surveyor, or other duly authorized official)Surveyors Registration No. S-802 DOCUMENT NUMBER 36943Office of Register of Deeds County of ForestI hereby certify that the within instrument was filed in this office for record
on the 26th day of August 1969, and was filed in Book
No. I Page No. of County Records. 8:30 AM.Signature Eugene Stegny Title Register of DeedsTownship 36 North, Range 16 East, Section 13, Index No. L-25, Page No. L
25

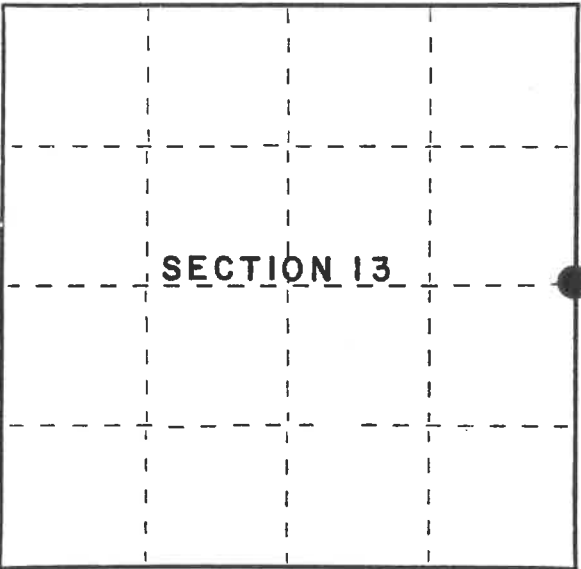
U.S. PUBLIC LAND SURVEY MONUMENT RECORD

Index No. L-25

State of Wisconsin }
County of Forest } ss.

I, Gary L. Pisoni, do hereby
certify that on the 1st day
of April, 1994, I found
evidence of the East Quarter
corner of Section 13
Township 36, North, Range
16-17 East, Fourth Principal Meridian,
as described hereon; and that from this evidence
I established a new monument and accessories
as described hereon to perpetuate the original
location of this corner.

Resident witnesses:



● = Corner monument restored.

History of original corner establishment:

Original Government Survey in 1857 by Artemas Curtis. North between Sections 13 and 18 at 40.00 chains, set Quarter Section post from which the following bear: Cedar, 7" S 18° W, 26 lks; Cedar, 10" S 38° E, 35 lks.

In 1936 and 1937, Marinette County surveyors, F.P. Gould and B.F. Hammes set a 4" dia. iron post in concrete with a Marinette County brass cap, from which the following bear:
Ash 6" S 42° E 58.5 lks Hemlock 7" N 83° E 42.6 lks

In 1968, Jean Resvick, RLS, with the Forest Service found the above monument and blazed and scribed the following B.T.s: Ash, 5", N 36° W, 34.90 feet, Spruce, 9", N 22° E, 44.13 feet
Description of corner evidence found: Cedar sign post N 34° E, 1.2 feet from monument

Found the monument and bearing trees as described above:

White Spruce	14"	N 20° E	44.40 feet
Cedar sign post		N 15° E	1.6 feet

Description of monument and accessories I established to perpetuate the original location of this corner.

Blazed and scribed the following new bearing trees: (Measurements taken to nail in side of tree)

Black Ash	12"	S 83° E	78.74 feet
Black Ash	7"	S 84° W.	51.04 feet
Black Ash	5"	N 50° W	39.97 feet
Steel sign post		S 58° E	1.0 feet

Dated at Iron River, MI, this 26th day of May, 1995

Signature Gary L. Pisoni Title Land Surveyor Registration No. S-1634
(County Surveyor, Registered Land Surveyor, or other duly authorized official)

Office of Register of Deeds, County of Forest, I hereby certify that the within instrument was filed in this office for record on the 20th day of March, 1997 at 1:30 o'clock P M.

(Register of Deeds)

By John Tomlinson Deputy

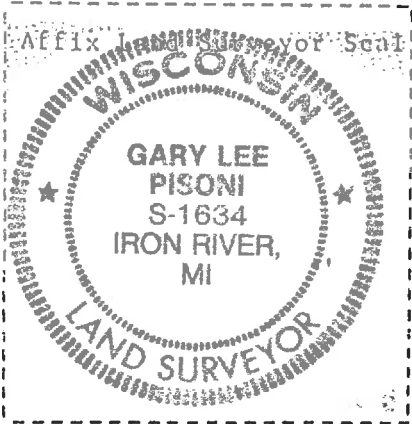
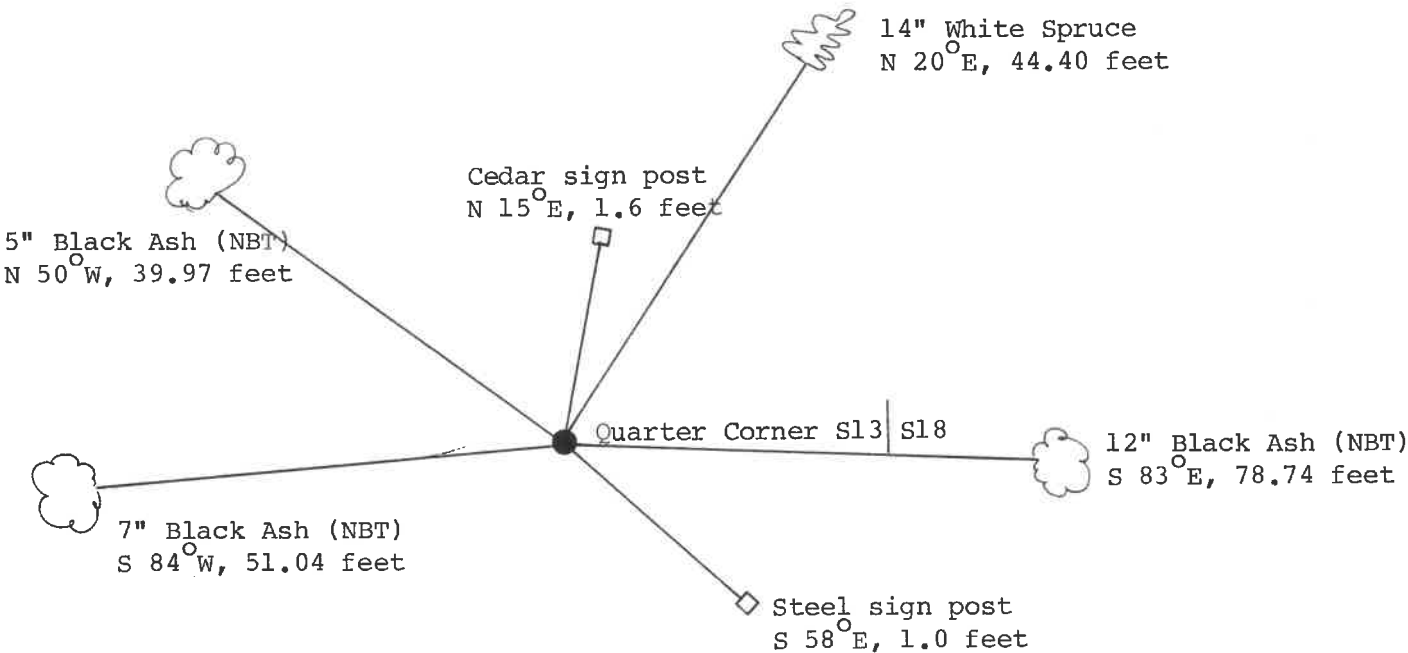
(e) Describe any material discrepancy between the location of the corner as restored or reestablished and the location of that corner as previously restored or reestablished by distance and direction. Show the discrepancy on the plan view drawing under (d), above. Show the distances between the corner as previously restored or reestablished and (1) the corner as restored or reestablished, and (2) to at least 2 of the witness monuments shown on the drawing in (d), above.

None

(f) Was the corner restored through acceptance of (1) an obliterated evidence location, or, (2) a found perpetuated location?

Restored through acceptance of a found perpetuated location.

(g&h) Was the corner reestablished through lost corner proportionate methods? If so, show the method, including the directions and distances to other public land survey corners used as evidence or used for proportioning in determining the corner location?



(i) I, Gary L. Pisoni
(type or print name) certify that the corner location shown on this record was determined by me or under my direction and control and that this U.S. Public Land Survey Monument Record is correct and complete to the best of my knowledge and belief.

Signature

Date