

!Attention!

This PLSS corner is in the process of being updated by Forest County. An updated Tie Sheet will be available for this corner soon.

Please contact Kayla at the Forest County Land Information Department for more information.

Contact Info:

715-478-1387 or Kayla.L@co.forest.wi.us

U.S. PUBLIC LAND SURVEY MONUMENT RECORD

Index No. **P-25**

State of Wisconsin }
County of Forest } ss.

I, Gary L. Pisoni, do hereby
certify that on the 30th day
of March, 19 94, I found
evidence of the East quarter
corner of Section 24
Township 36, North, Range
16-17 East, Fourth Principal Meridian,
as described hereon; and that from this evidence
I established a new monument and accessories
as described hereon to perpetuate the original
location of this corner.

Resident witnesses:

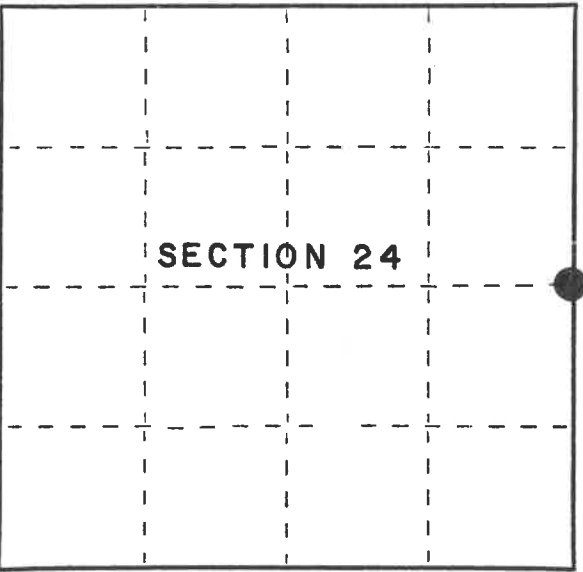
History of original corner establishment:
Original Government Survey in 1857 by Artemas Curtis. North between Sections 24 and 19
at 40.00 chains, set Quarter Section post from which the following bear: Elm, 15",
S 40° W, 31 lks; Sugar, 12", N 28° E, 28 lks.
In 1936 and 1937, Marinette County surveyors, F.P. Gould and B.F. Hammes set the Quarter
corner on line and by single proportionate measurement between the Northeast and Southeast
Section corners of Section 24. They set a 4" dia. iron post in concrete with a Marinette
County brass cap.

Description of corner evidence found:
Found the monument as described above and assessories set by unknown persons:

Iron bar	1"	S 41° E	7.64 feet
Iron bar	1"	S 33° W	7.57 feet
Iron bar	1"	N 38° W.	24.50 feet

Description of monument and accessories I established to perpetuate the original location of this corner.
Blazed and scribed the following new bearing trees: (Measurements taken to nail
in side of tree)

Basswood	7"	N 56° E	11.65 feet
Sugar Maple	16"	S 45° E	9.64 feet
Sugar Maple	5"	S 30° W	9.76 feet
Sugar Maple	13"	N 36° W	25.90 feet
Steel sign post		N 03° E	2.7 feet



● = Corner monument restored.

Dated at Iron River, MI, this 26th day of May, 19 95
Signature Gary L. Pisoni Title Land Surveyor Registration No. S-1634
(County Surveyor, Registered Land Surveyor, or other duly authorized official)
Office of Register of Deeds, County of Forest, I hereby certify that the within
instrument was filed in this office for record on the 20th day of March, 19 97
at 1:30 o'clock P M.

(Register of Deeds)
By Paul J. Jankiewicz Deputy

FORM NO. 985-A
H.C. Miller
Stock No. 26273
158121

43016242000

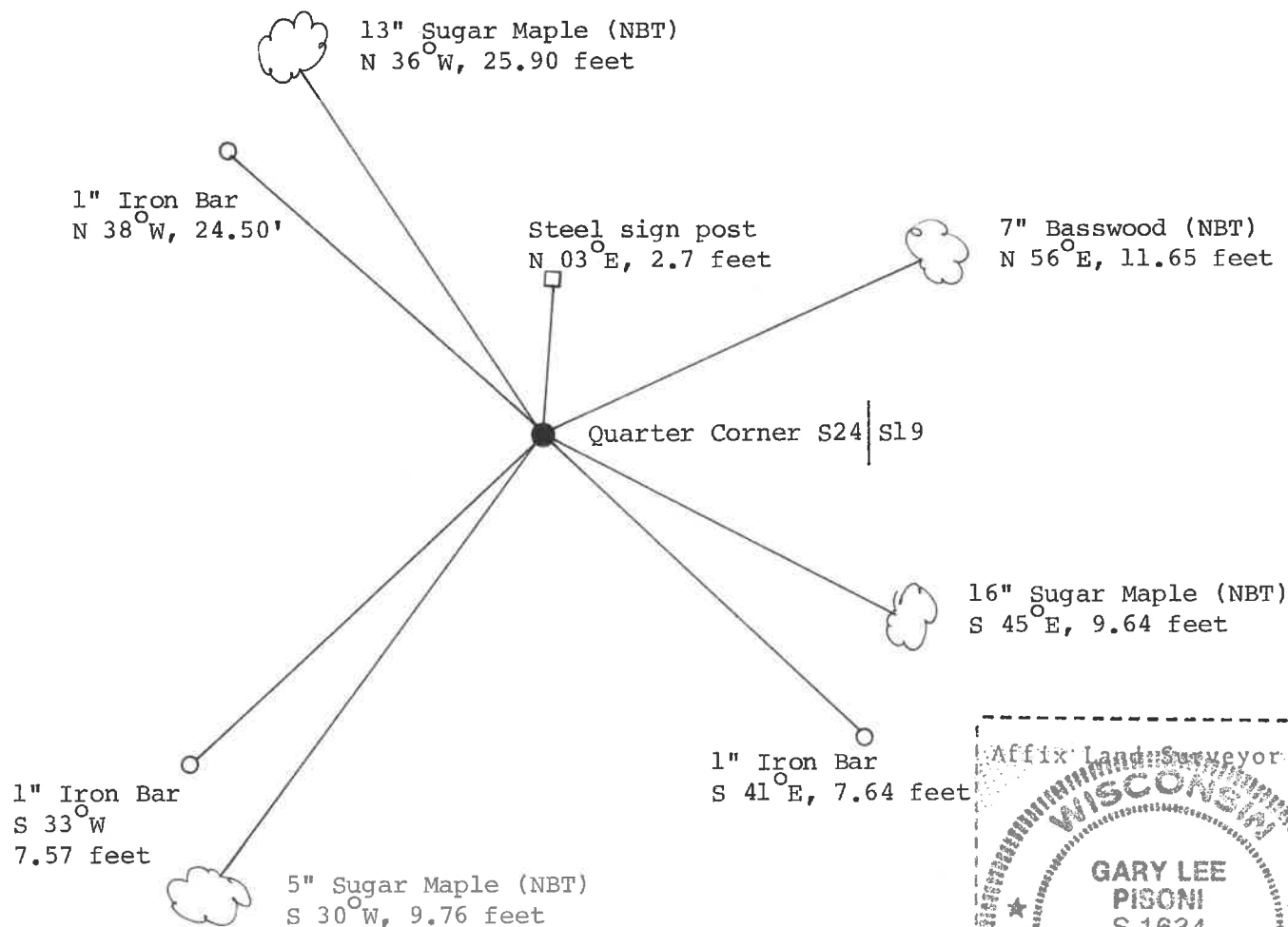
(e) Describe any material discrepancy between the location of the corner as restored or reestablished and the location of that corner as previously restored or reestablished by distance and direction. Show the discrepancy on the plan view drawing under (d), above. Show the distances between the corner as previously restored or reestablished and (1) the corner as restored or reestablished, and (2) to at least 2 of the witness monuments shown on the drawing in (d), above.

None

(f) Was the corner restored through acceptance of (1) an obliterated evidence location, or, (2) a found perpetuated location?

Restored through acceptance of a found perpetuated location.

(g&h) Was the corner reestablished through lost corner proportionate methods? If so, show the method, including the directions and distances to other public land survey corners used as evidence or used for proportioning in determining the corner location?



(i) I, Gary L. Pisoni
(type or print name) certify that the corner location shown
on this record was determined by me or under my direction and
control and that this U.S. Public Land Survey Monument Record is
correct and complete to the best of my knowledge and belief.

Gary L. Pisoni
Signature

10-2-95
Date