

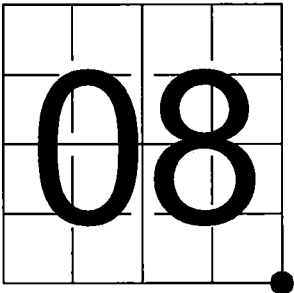
FILED ON:
12/10/2025 10:02 AM
CORTNEY BRITTEN CLEEREMAN
REGISTER OF DEEDS
FOREST COUNTY WI
PAGES: 1

U.S. PUBLIC LAND SURVEY
MONUMENT RECORD

NOTE: This form is intended and designed to fulfill all requirements of Wisconsin Administrative Code, Chapter A-E 7.08 U.S. Public Land Survey Monument Record (3) (a-i)

A-E 7.08(3)(a) Identity of corner:
Southeast Corner Section 08,
Township 37 North, Range 12 East
of the Fourth Principal Meridian,
Town of Hiles, Forest County, Wisconsin

WISCRS - FOREST COUNTY
N: 616,238.106 USft (616,238.055)
E: 809,702.689 USft (809,702.752)
Datum: NAD83 (2011)
GNSS Method RTN
GNSS Control WISCRS VRS



The coordinate value shown has been verified by the average of two or more GPS observations at a markedly different time. Coordinates shown in parenthesis are 2021 measurement values.

A-E 7.08(3)(b)

Original Surveyor: William E. Daugherty - August 17, 1859 to August 23, 1859
Birch 10 - S 1° W, 24 links, Cedar 10 - N 4° W, 20 links

See previous Certified Land Corner Restoration - J9 - May 2, 1982 - Surveyor 1558 - Milo E. Stefan - THENCE:

- June 9, 1998 - Surveyor 1935 - Daniel E. Higginbotham - indicates this position as "fd. brass mon." on county record Map #371216-19980609.
- May 17, 2021 - Surveyor 2656 - Jeffrey L. DeMuth - indicates this position as "found Forest Co. aluminum monument" on county record Map #371216-20210517.

August 20, 2025 - I found a 2.4" diameter aluminum pipe monument with a 3.25" diameter Forest County aluminum cap stamped to identify the corner location. The monument is on high land with the remains of a barbed wire fence heading north and south from the monument. The monument is in a rock pile and extends ±6" above grade. I also found 4 of Stefan's bearing trees alive and in good condition. I established 0 new reference monuments as shown below.

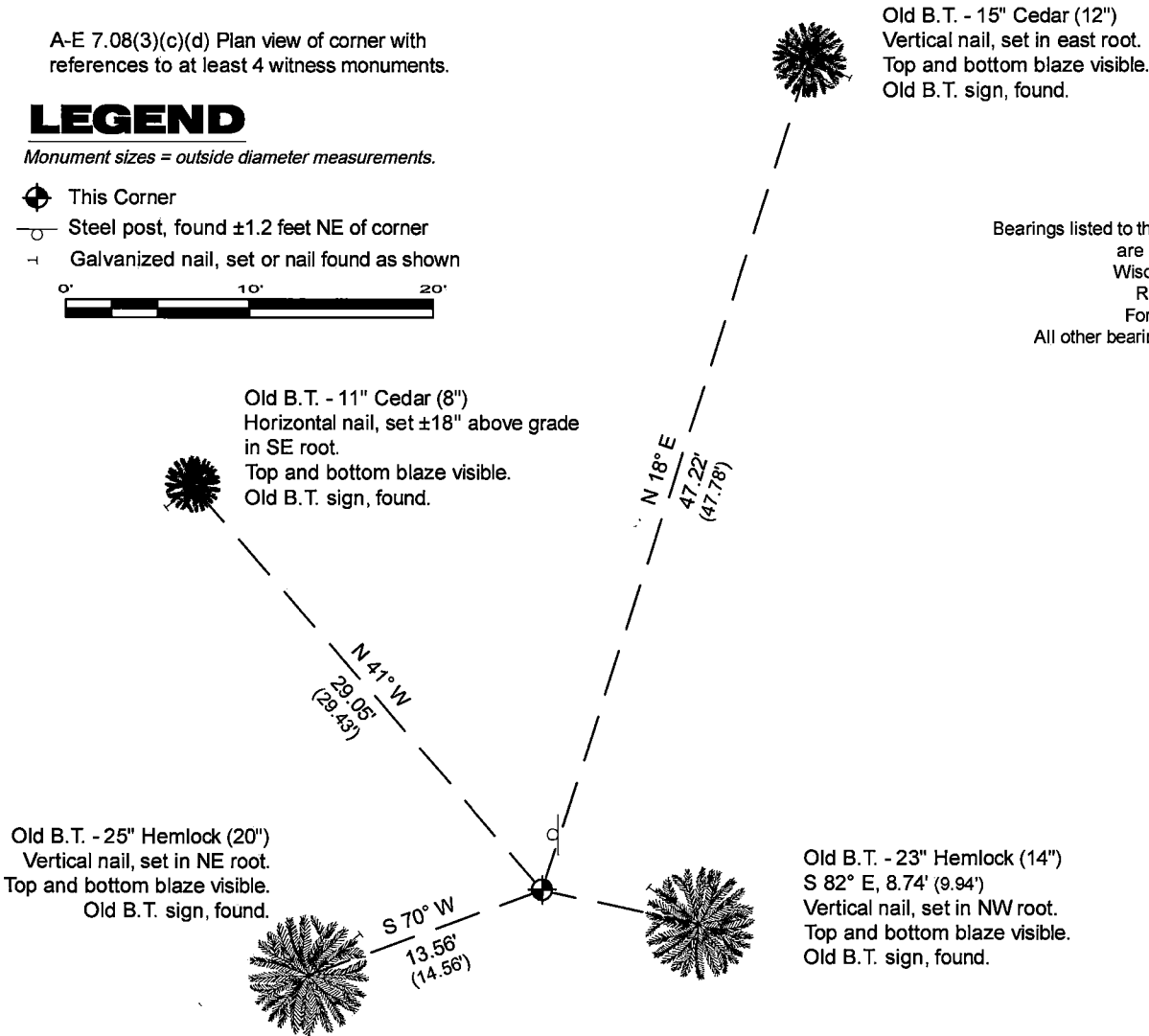
A-E 7.08(3)(c)(d) Plan view of corner with references to at least 4 witness monuments.

LEGEND

Monument sizes = outside diameter measurements.

- ⊙ This Corner
 - Steel post, found ±1.2 feet NE of corner
 - ⊢ Galvanized nail, set or nail found as shown
- 0' 10' 20'

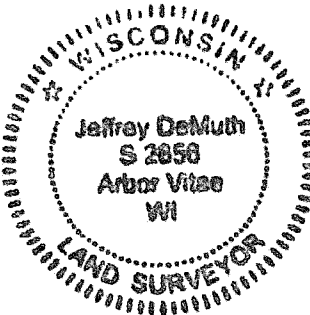
Bearings listed to the nearest second are referenced to the: Wisconsin Coordinate Reference System, Forest County Zone. All other bearings are magnetic.



A-E 7.08(3)(e) 1859 Surveyor set a post, 1982 Surveyor set and aluminum monument, subsequent surveyors found the same, as did I in 2025.

A-E 7.08(3)(f) I accept this monument in good faith as a FOUND PERPETUATED LOCATION of the corner.
A-E 7.08(3)(g)(h) This corner was not determined through lost-corner-proportionate methods.

A-E 7.08(3)(i) I, Jeffrey L. DeMuth, Professional Land Surveyor No. S-2656, hereby certify that the corner location on this record was determined by me or under my direction and control, and that this U.S. Public Land Survey Monument Record is correct and complete to the best of my knowledge, and belief.



SIGNATURE

September 16, 2025
DATE

CERTIFIED LAND CORNER RESTORATION

State of Wisconsin

County of Forest

ss.

I, Milo E. Stefan, do hereby certify that on the 13th day of May, 1982, I found evidence of the Northwest corner of Section 16 Township 37N, Range 12E, Fourth Principal Meridian, as described hereon; and that from this evidence I established a new monument and accessories as described hereon to perpetuate the original location of this corner:

Description of original monument and accessories and subsequent restorations:

Surveyed in 1859 by Wm. Daugherty
80.00 chains north, set wood post
Birch, 10", SW, 24 lks., 15.84 feet
Cedar, 10", NW, 20 lks., 13.20 feet

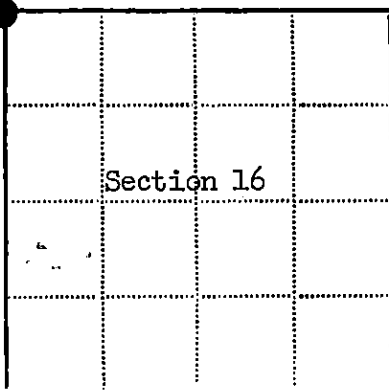
Description of corner evidence found:

Found 1 1/4" iron pipe at fence corner
5" x 5" x 24" post at base of Hemlock
Stump remains, SW, 16 feet
Cedar (stump very rotten), NW, 13.2 feet

Description of monument and accessories I established to perpetuate the location of this corner:

Replaced iron pipe with a 2" x 36" aluminum monument with tablet stamped as follows:
T37N, R12E, S8, S9, S17, S16, 1982, RLS-1558
From which the following bear:
Cedar, 12", N18E, 47.78 feet
Hemlock, 14", S82E, 9.94 feet
Hemlock, 20", S70W, 14.56 feet
Cedar, 8", NW, 29.43 feet
Steel sign post, NW, 1.4 feet

DOCUMENT NO.
124240



● - Corner monument restored
□ -

Resident witnesses.....

Dated at Rhineland Wisconsin, this 2 day of MAY 1982.....

Signature Milo E. Stefan Title Land Surveyor
(County Surveyor, Registered Land Surveyor, or other duly authorized official)

Surveyors Registration No. RLS-1558

Office of Register of Deeds County of Forest

I hereby certify that the within instrument was filed in this office for record on the 15th day of September 1983, and was filed in Book No. Page No. of County Records.

Signature Eugene Statynsky Title Register of Deeds

Township 37N, Range 12E, Section 16, Index No. J-9, Page No. 8

4371208 dp dp

6