

CORTNEY BRITTEN CLEEREMAN
REGISTER OF DEEDS
FOREST COUNTY WI
PAGES: 1

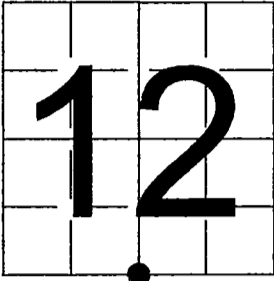
INDEX#: J23

U. S. PUBLIC LAND SURVEY MONUMENT RECORD

NOTE: This form is intended and designed to fulfill all requirements of Wisconsin Administrative Code, Chapter A-E 7.08 U.S. Public Land Survey Monument Record (3) (a-i)

A-E 7.08(3)(a) Identity of corner:
South 1/4 Corner Section 12,
Township 37 North, Range 12 East
of the Fourth Principal Meridian,
Town of Hiles, Forest County,
Wisconsin

WISCRS - FOREST COUNTY
N: 616,224.025 USft (XXX,XXX.XXX)
E: 828,026.687 USft (XXX,XXX.XXX)
Datum: NAD83 (2011)
GNSS Method RTK
GNSS Control WISCRS VRS



The coordinate value shown has been verified by the average of two or more GPS observations at a markedly different time. Coordinates shown in parenthesis are previously published values.

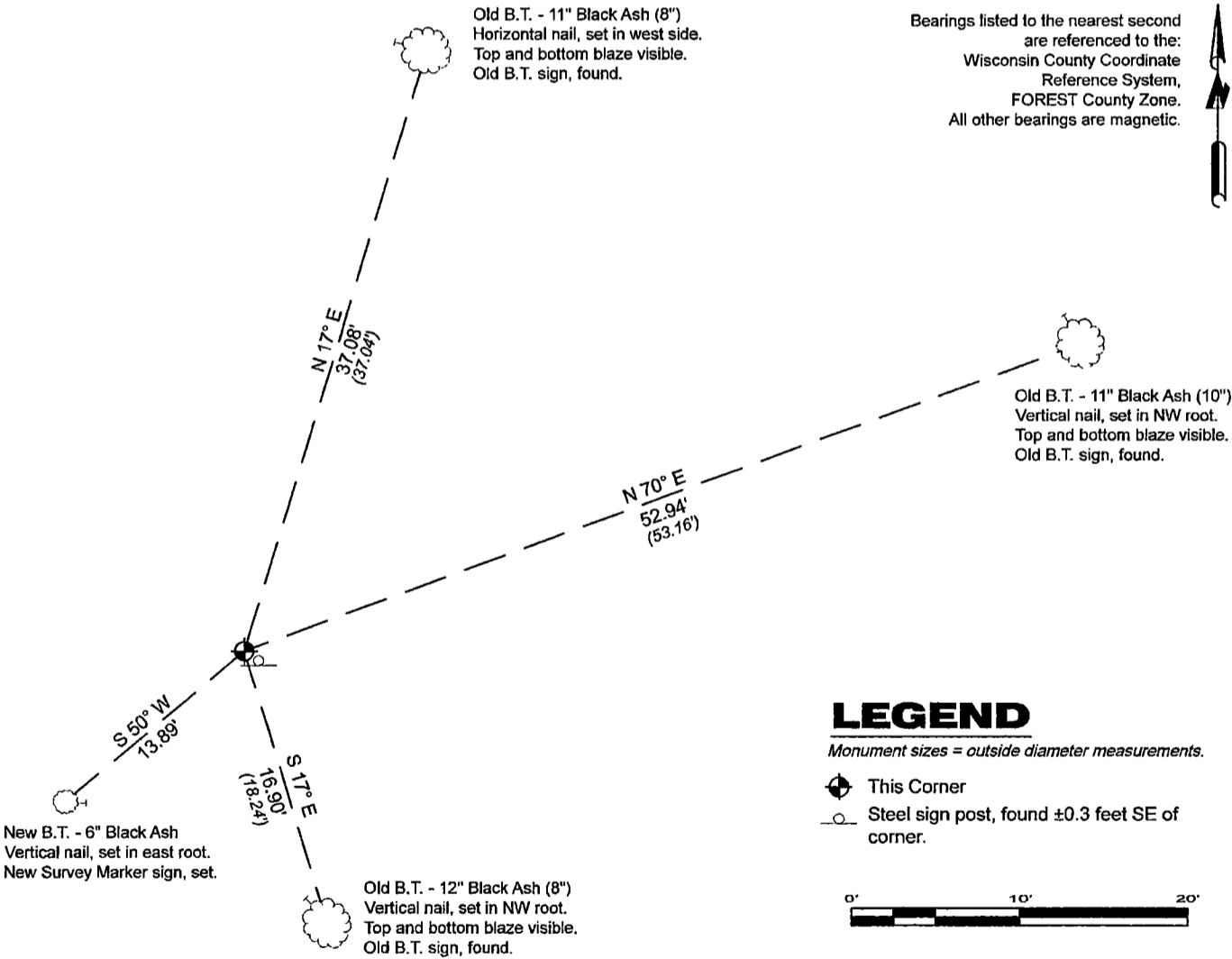
A-E 7.08(3)(b)

Original Surveyor: William E. Daugherty - August 17, 1859 to August 23, 1859
Maple 12 - S 44° E 25 Links, Birch 14 - N 32° E 35 Links

See previous U.S.Public Land Survey Monument Record - J-23 - October 25, 1989 - Surveyor 1665 - John C. Schulke. THENCE:

February 6, 2024 - I found a 2.5" diameter aluminum pipe, with a 3.25" diameter aluminum cap, stamped to identify the corner location. I also found 3 of Schulke's bearing trees and his steel sign post. The monument extends ±12" above grade. I established 1 new reference monuments as shown below.

A-E 7.08(3)(c)(d) Plan view of corner with references to at least 4 witness monuments.



LEGEND

Monument sizes = outside diameter measurements.

- This Corner
- Steel sign post, found ±0.3 feet SE of corner.

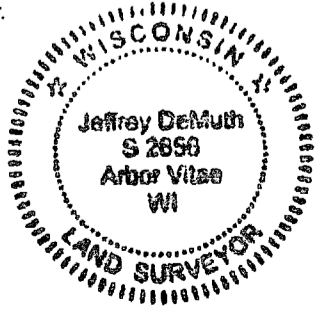
A-E 7.08(3)(e) 1989 Surveyor set a 2 1/2" aluminum monument, I found the same in 2024.

A-E 7.08(3)(f) I accept this monument in good faith as a FOUND PERPETUATED LOCATION of the corner.

A-E 7.08(3)(g)(h) This corner was previously determined through lost-corner-proportionate methods.

A-E 7.08(3)(i) I, Jeffrey L. DeMuth, Professional Land Surveyor No. S-2656, hereby certify that the corner location on this record was determined by me or under my direction and control, and that this U.S. Public Land Survey Monument Record is correct and complete to the best of my knowledge, and belief.

SIGNATURE DATE February 14, 2024



43712120020

43712120020

J23

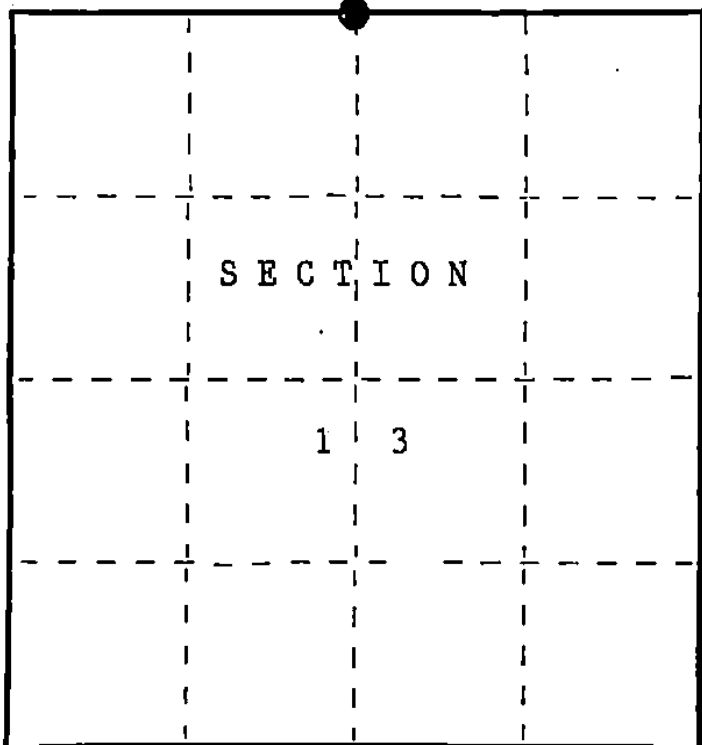
U.S. PUBLIC LAND SURVEY MONUMENT RECORD

Index No. J-23

State of Wisconsin }
County of FOREST } ss.

I, John Schulke, do hereby certify that on the 22nd day of August, 1989, I found evidence of the North Quarter corner of Section 13 Township 37 North, Range 12 East, Fourth Principal Meridian, as described hereon; and that from this evidence I established a new monument and accessories as described hereon to perpetuate the original location of this corner.

Resident witnesses:



● = Corner monument restored.

History of original corner establishment:

In 1859, Original Government Surveyed by Wm. E. Daugherty. Set a wood post with the following corner references: Maple 12" S44°E 25 lks. Birch 14" N32°E 35 lks.

Description of corner evidence found:

In 1989, John Schulke found no evidence.

Description of monument and accessories I established to perpetuate the original location of this corner.

Set a 2 1/2" Dia. X 36" aluminum magnetic cap monument stamped to identify the corner. Monument placed in a mound of stones. Set a steel sign post 0.3 ft. Southeast of the monument. The following corner references:

Balsam	7"	N75°W	28.08 ft.
Black Ash	8"	N17°E	37.04 ft.
Black Ash	10"	N70°E	53.16 ft.
Black Ash	8"	S17°E	18.24 ft.

Dated at Wabeno, Wis., this 25th day of October, 1989.

Signature John C. Schulke Title Register Land Surveyor Registration No. S-1665
(County Surveyor, Registered Land Surveyor, or other duly authorized official)

Office of Register of Deeds, County of Forest, I hereby certify that the within instrument was filed in this office for record on the 8th day of March, 1990 at 1:00 o'clock P. M.

Paul Heckenbrenner
(Register of Deeds)

By Deputy

(e) Describe any material discrepancy between the location of the corner as restored or reestablished and the location of that corner as previously restored or reestablished by distance and direction. Show the discrepancy on the plan view drawing under (d), above. Show the distances between the corner as previously restored or reestablished and (1) the corner as restored or reestablished, and (2) to at least 2 of the witness monuments shown on the drawing in (d), above.

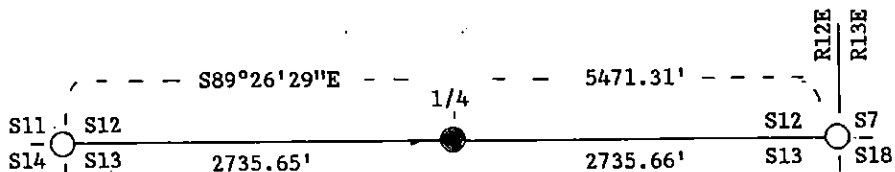
No.

(f) Was the corner restored through acceptance of (1) an obliterated evidence location, or, (2) a found perpetuated location?

Neither

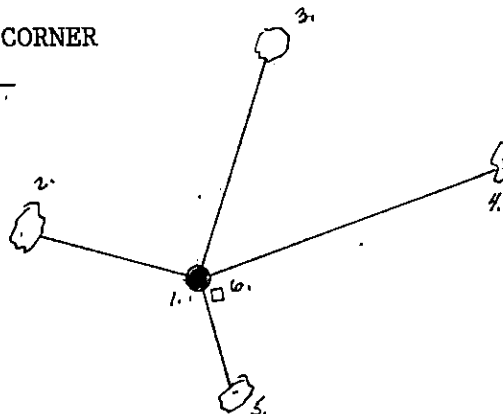
(g&h) Was the corner reestablished through lost corner proportionate methods? If so, show the method, including the directions and distances to other public land survey corners used as evidence or used for proportioning in determining the corner location?

Yes.



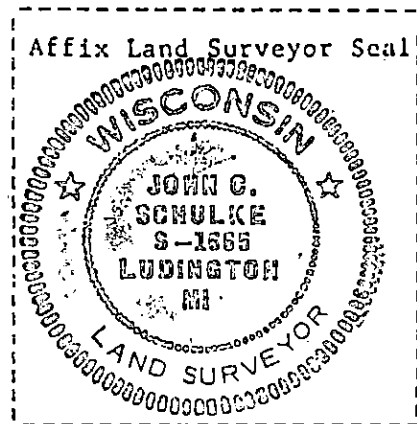
QUARTER CORNER

S12
S13



1. 2 1/2" X 36" aluminum monument.
2. Balsam 7" N75°W 28.08 ft.
3. Black Ash 8" N17°E 37.04 ft.
4. Black Ash 10" N70°E 53.16 ft.
5. Black Ash 8" S17°E 18.24 ft.
6. Steel sign post Southeast 0.3 ft.

(i) John Schulke (RLS-1665)
(type or print name) certify that the corner location shown on this record was determined by me or under my direction and control and that this U.S. Public Land Survey Monument Record is correct and complete to the best of my knowledge and belief.



John C Schulke
Signature

Oct 25th, 1989
Date

Survey requested by;

Dale Stange
District Ranger

1989
Date