

CORTNEY BRITTEN CLEEREMAN
REGISTER OF DEEDS
FOREST COUNTY WI
PAGES: 1

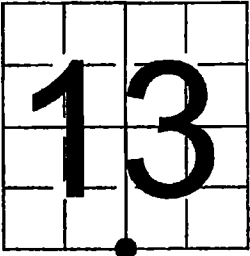
INDEX#: *N23*

U. S. PUBLIC LAND SURVEY MONUMENT RECORD

NOTE: This form is intended and designed to fulfill all requirements of Wisconsin Administrative Code, Chapter A-E 7.08 U.S. Public Land Survey Monument Record (3) (a-i)

A-E 7.08(3)(a) Identity of corner:
South 1/4 Corner Section 13,
Township 37 North, Range 12 East
of the Fourth Principal Meridian,
Town of Hiles, Forest County,
Wisconsin

WISCRS - FOREST COUNTY
N: 611,352.077 USft (XXX,XXX.XXX)
E: 827,949.002 USft (XXX,XXX.XXX)
Datum: NAD83 (2011)
GNSS Method RTK
GNSS Control WISCRS VRS



The coordinate value shown has been verified by the average of two or more GPS observations at a markedly different time. Coordinates shown in parenthesis are previously published values.

A-E 7.08(3)(b)

Original Surveyor: William E. Daugherty - August 17, 1859 to August 23, 1859
Cedar 12 - S 79° W 7 Links, Tamarac 14 - N 25° E 15 Links

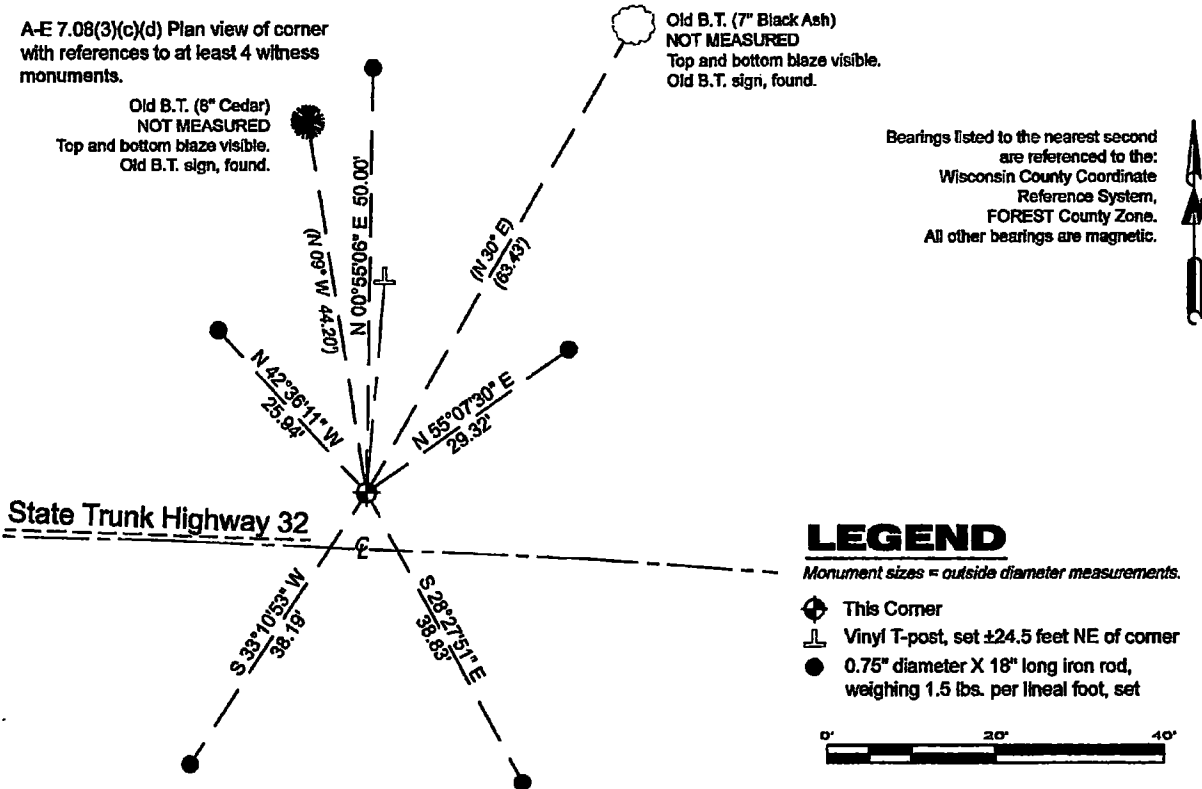
See previous U.S. Public Land Survey Monument Record - N-23 - November 3, 1989 - Surveyor 1665 - John C. Schulke. THENCE:

- May 6, 1999 - Surveyor 1616 - Steven J. Favorite - Indicates this position as "railroad spike found in pavement" on County file #371213-19990506.
- September 11, 2001 - Surveyor 2566 - David A. Konopacky - indicates this position as "railroad spike found in pavement" on County file #371224-20010911.
- December 20, 2012 - Surveyor 2671 - Timothy J. Rusch - indicates this position as "per D.O.T. R-O-W Map" on county record Map #371224-20121220.

February 6, 2024 - I did not find the monument. I did find 2 of Schulke's bearing trees. I also found both of Favorite's 1.5" diameter iron pipes as established on the east line of that property shown as "Vol. 159 Pg. 597" on County file #371213-19990506., as well as the Southeast Corner and East 1/4 Corner of Section 13, T.37N., R.12E.

I declare the corner obliterated and restored it's position using the monuments referred to above, and set a Bemtsen steel Survey Mark Spike ±7 feet north of the State Trunk Highway 32 centerline. I established 5 new reference monuments as shown below.

A-E 7.08(3)(c)(d) Plan view of corner with references to at least 4 witness monuments.



A-E 7.08(3)(e) 1989 Surveyor set a railroad spike, subsequent surveyors found the same. I declared the corner obliterated and restored it by available evidence, with a Bemtsen Survey Mark Spike in 2024.

A-E 7.08(3)(f) I accept this monument in good faith as a PERPETUATED LOCATION of the corner.

A-E 7.08(3)(g)(h) This corner was not determined through lost-corner-proportionate methods.

A-E 7.08(3)(i) I, Jeffrey L. DeMuth, Professional Land Surveyor No. S-2656, hereby certify that the corner location on this record was determined by me or under my direction and control, and that this U.S. Public Land Survey Monument Record is correct and complete to the best of my knowledge, and belief.

Jeffrey L. DeMuth
SIGNATURE
February 14, 2024
DATE



43712130020

43712130020

N23

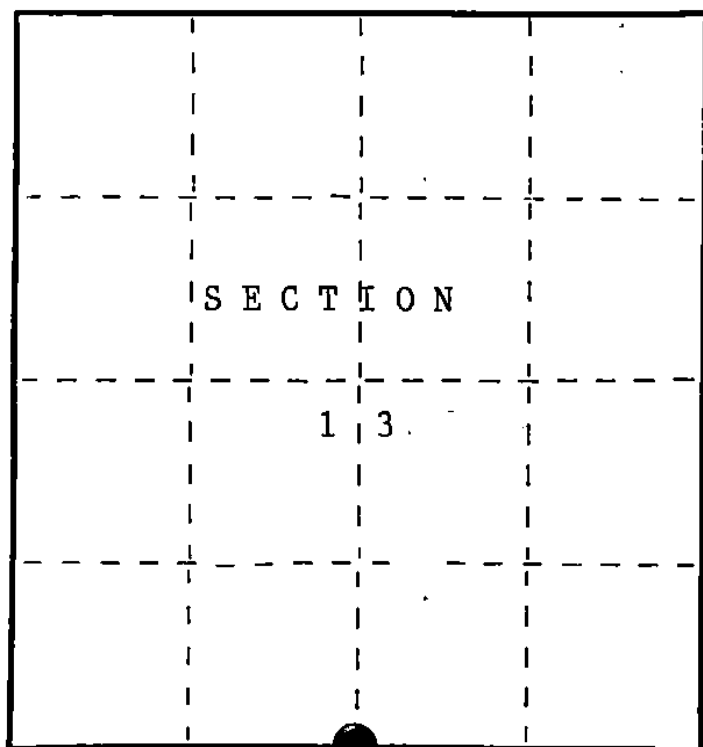
U.S. PUBLIC LAND SURVEY MONUMENT RECORD

Index No. N-23

State of Wisconsin }
County of FOREST } ss.

I, John Schulke, do hereby certify that on the 12th day of October, 1989, I found evidence of the South Quarter corner of Section 13 Township 37 North, Range 12 East, Fourth Principal Meridian, as described hereon; and that from this evidence I established a new monument and accessories as described hereon to perpetuate the original location of this corner.

Resident witnesses:



● = Corner monument restored.

History of original corner establishment:

In 1859, Original Government surveyed by Wm. E. Daugherty. Set a wood post with the following corner references: Cedar 12" S79°W 7 lks. Tamarack 14" N25°E 13 lks. West 1.24 chains, creek 15 lks wide runs South.

Description of corner evidence found:

In 1989, John Schulke found deflection of State Highway 32 in the general area of the corner. Stream crosses roadway to the West of the deflection. I accepted the alignment of the State Highway 32 and the stream as the best available evidence to position the corner.

Description of monument and accessories I established to perpetuate the original location of this corner.

Set a 2 1/2" dia. X 60" aluminum magnetic cap witness monument stamped to identify the the location of the corner. Set a railroad spike at the corner. Set a steel sign post 0.8 ft. North of the witness monument. The stream bears West a distance of 82 feet from the railroad spike. The following corner references:

Cedar	8"	N09°W	44.20 ft.
Black Ash	7"	N30°E	63.43 ft.
Power Pole	#3712-24W14	S31°W	36.32 ft.
Witness monument	2 1/2"	N0°41'E	33.00 ft.

Dated at Ludington, MI, this 3rd day of November, 1989

Signature: John C. Schulke Title: Register Land Surveyor Registration No: S-1665
(County Surveyor, Registered Land Surveyor, or other duly authorized official)

Office of Register of Deeds, County of Forest, I hereby certify that the within instrument was filed in this office for record on the 8th day of March, 1990 at 1:00 o'clock P. M.

Paul Achenbrenner
(Register of Deeds)

By Deputy

FORM NO. 985-A

H.C. Miller Company

Stock No. 26273

DOCUMENT NUMBER

139260

43712130020

(e) Describe any material discrepancy between the location of the corner as restored or reestablished and the location of that corner as previously restored or reestablished by distance and direction. Show the discrepancy on the plan view drawing under (d), above. Show the distances between the corner as previously restored or reestablished and (1) the corner as restored or reestablished, and (2) to at least 2 of the witness monuments shown on the drawing in (d), above.

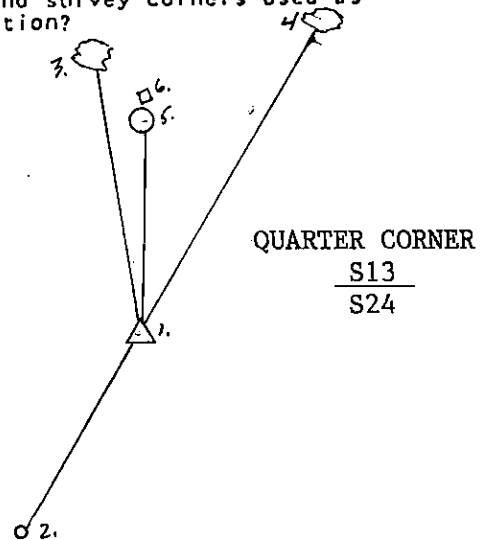
No.

(f) Was the corner restored through acceptance of (1) an obliterated evidence location, or, (2) a found perpetuated location?

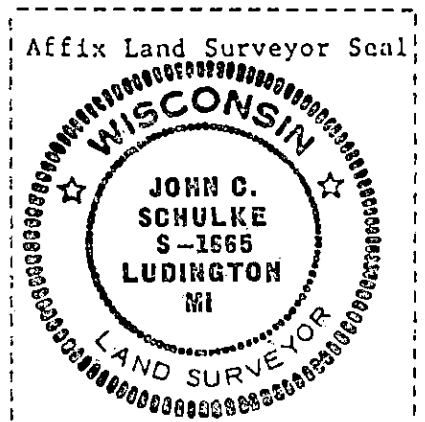
(1) an obliterated evidence location.

(g&h) Was the corner reestablished through lost corner proportionate methods? If so, show the method, including the directions and distances to other public land survey corners used as evidence or used for proportioning in determining the corner location?

No.



1. Railroad spike
2. Power pole #3712-24W14 S31°W 36.32 ft.
3. Cedar 8" N09°W 44.20 ft.
4. Black Ash 7" N30°E 63.43 ft.
5. Witness monument 2 1/2" N0°41'E 33.00 ft.
6. Steel sign post 0.8 ft. North of the witness monument.



(i) I, John Schulke (RLS-1665)
(Type or print name) certify that the corner location shown on this record was determined by me or under my direction and control and that this U.S. Public Land Survey Monument Record is correct and complete to the best of my knowledge and belief.

John C. Schulke Nov 3rd, 1989
Signature Date

Survey requested by, Dale B. Starg 1989
District Ranger Date