

CORTNEY BRITTEN CLEEREMAN
REGISTER OF DEEDS
FOREST COUNTY WI
PAGES: 1

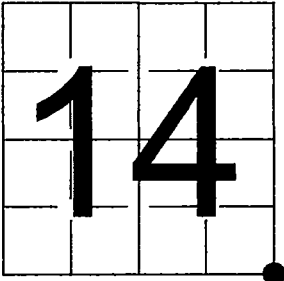
INDEX#: N21

U. S. PUBLIC LAND SURVEY MONUMENT RECORD - ADDENDUM

NOTE: This form is intended and designed to fulfill all requirements of Wisconsin Administrative Code, Chapter A-E 7.08 U.S. Public Land Survey Monument Record (3) (a-i)

A-E 7.08(3)(a) Identity of corner:
Southeast Corner Section 14,
Township 37 North, Range 12 East
of the Fourth Principal Meridian,
Town of Hiles, Forest County,
Wisconsin

WISCRS - FOREST COUNTY
N: 611,277.168 USft (XXX,XXX.XXX)
E: 825,303.362 USft (XXX,XXX.XXX)
Datum: NAD83 (2011)
GNSS Method RTK
GNSS Control WISCORS VRS



The coordinate value shown has been verified by the average of two or more GPS observations at a markedly different time. Coordinates shown in parenthesis are previously published values.

A-E 7.08(3)(b)

Original Surveyor: William E. Daugherty - August 17, 1859 to August 23, 1859
Fir 12 - S 26° W 37 Links, Sugar 9 - N 1° E 24Links

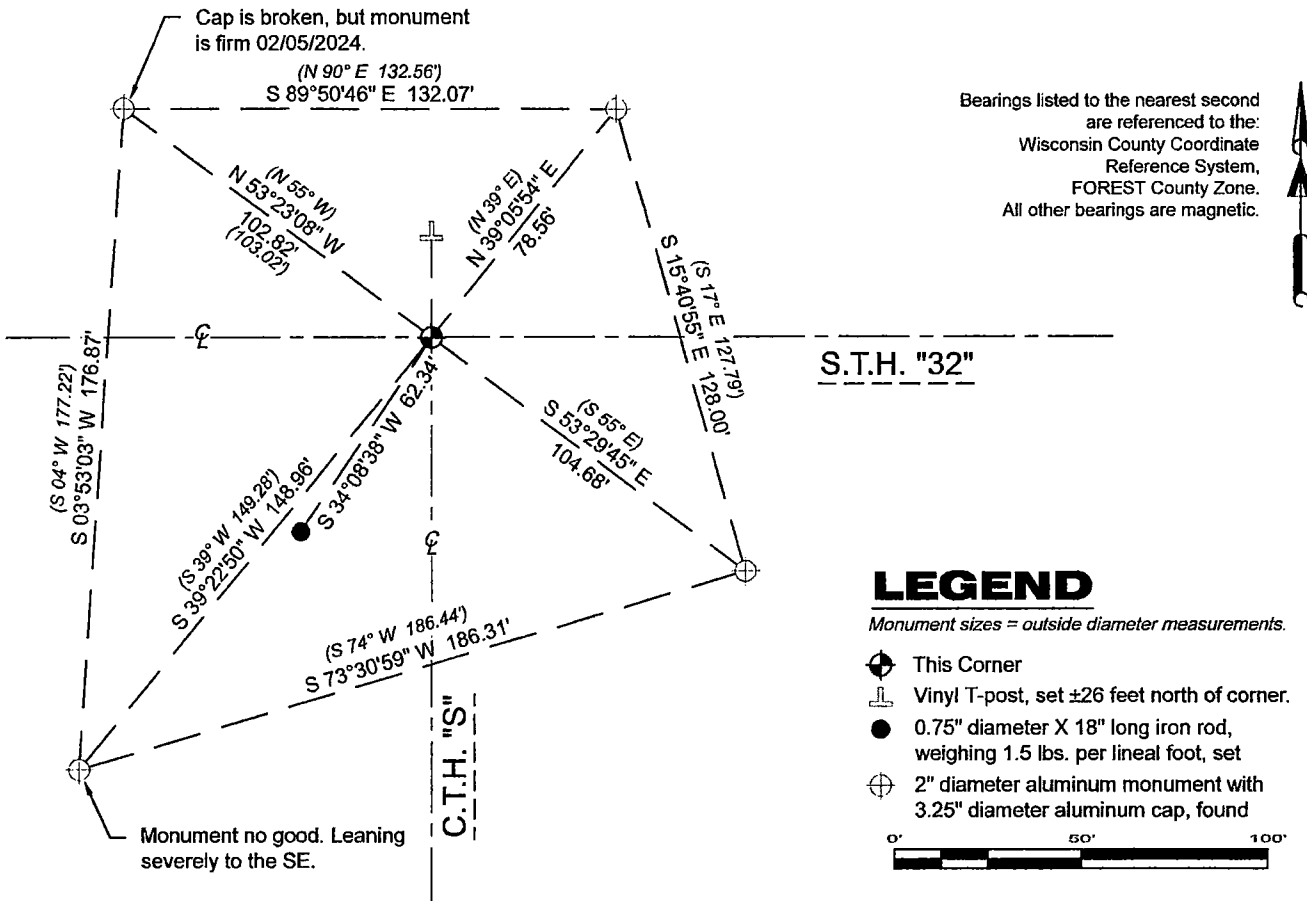
See previous Record and Certification of U.S. Public Land Survey Control Station - N-21 - October 21, 1992 - Survey Crew Chief - R.B. Johnson. THENCE:

October 1, 1999 - Surveyor 1731 - Kip W. Soder - indicates this position as "Mag nail in the pavement" on county record Map #371223-19991001.

February 5, 2024 - I found a Mag nail shaft near the the centerline of State Trunk Highway 32, and its intersection with the centerline of County Trunk Highway S. I also found 4 of Johnson's reference monuments (2 intact and in good condition, 1 with a broken top, and 1 leaning southeast). The Mag nail shaft does not match the distances published on Record and Certification of U.S. Public Land Survey Control Station.

I declare the corner obliterated and restored it's postion using the 2 intact reference monuments, and set a Berntsen Survey Mark Spike. I established 1 new reference monuments as shown below.

A-E 7.08(3)(c)(d) Plan view of corner with references to at least 4 witness monuments.



A-E 7.08(3)(e) 1992 Surveyor found a P.K. nail, 1999 Surveyor found a Mag Nail. I declared the corner obliterated and restored using available evidence with a Berntsen Survey Spike in 2024.

A-E 7.08(3)(f) I accept this monument in good faith as a PERPETUATED LOCATION of the corner.

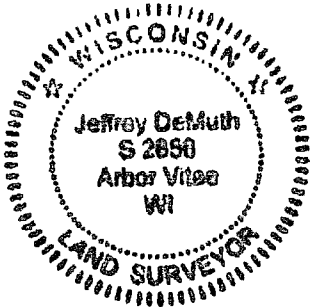
A-E 7.08(3)(g)(h) This corner was not determined through lost-corner-proportionate methods.

A-E 7.08(3)(i) I, Jeffrey L. DeMuth, Professional Land Surveyor No. S-2656, hereby certify that the corner location on this record was determined by me or under my direction and control, and that this U.S. Public Land Survey Monument Record is correct and complete to the best of my knowledge, and belief.

SIGNATURE

February 14, 2024

DATE



43712140000

43712140000

N21

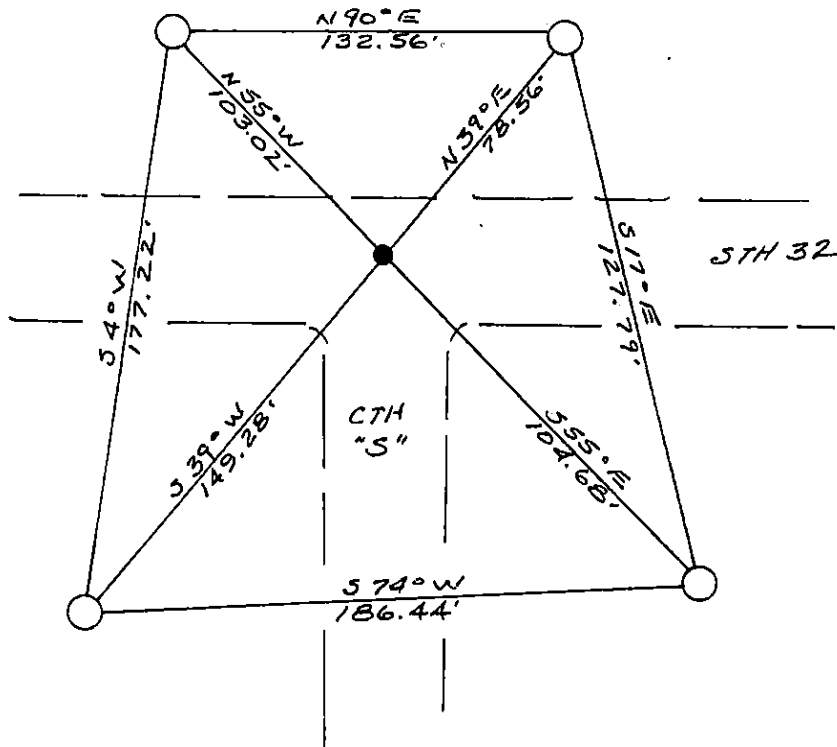
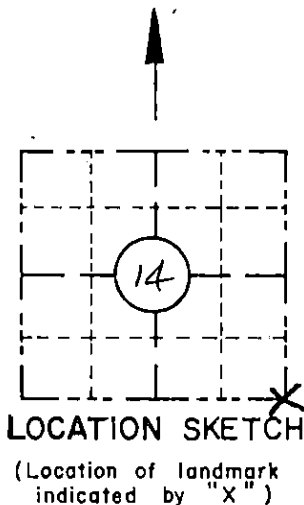
ORIGINAL ON FILE IN CO CLERK'S OFFICE
COPY HERE FOR REFERENCE

RECORD AND CERTIFICATION OF U.S.
PUBLIC LAND SURVEY CONTROL STATION
E-D-716-72

State of Wisconsin / Department of Transportation

District 7	Project I. D. 9261-03-00	Located by R.B. JOHNSON - SURVEY CREW CHIEF			
Corner S.E. COR. 14 SECTION	Township 37 N	Range (E,W) 12 E	County FOREST		
Wisconsin Coordinates CORNER	East (X) 2,269,658.07	North (Y) 189,575.00	Elevation (Z)	Zone N	
Control Station Name	East (X)	North (Y)	Elevation (Z)	Zone	
Horizontal — NAD 83 (1991) NORTH AMERICAN, 1983		CONTROL DATUM Vertical — MEAN SEA LEVEL, 1929 ADJUSTMENT			
Horizontal — _____ Order		SURVEY CONTROL Vertical — _____ Order			

SKETCH



I hereby certify that on the 21st day of OCT. 1992, that I did locate the above corner which was evidenced by P.K. NAIL; I further certify that to perpetuate the location of such corner I did, at the exact location thereof, place a permanent marker consisting of _____; I further certify that I did establish 4 references or witness monuments consisting of BERNTSEN MAGNETIC ALUMINUM MONUMENTS WITH WISDOT CAPS located as shown above:

SEAL

Signature Registered Land Surveyor	Registration No. S---	Title
------------------------------------	--------------------------	-------

43712140000

CORNER
S.E. COR.
(N-21)
SECTION
14
TOWN
37 N
RANGE
12 E
N-21

CERTIFIED LAND CORNER RESTORATION

Index No. **N21**

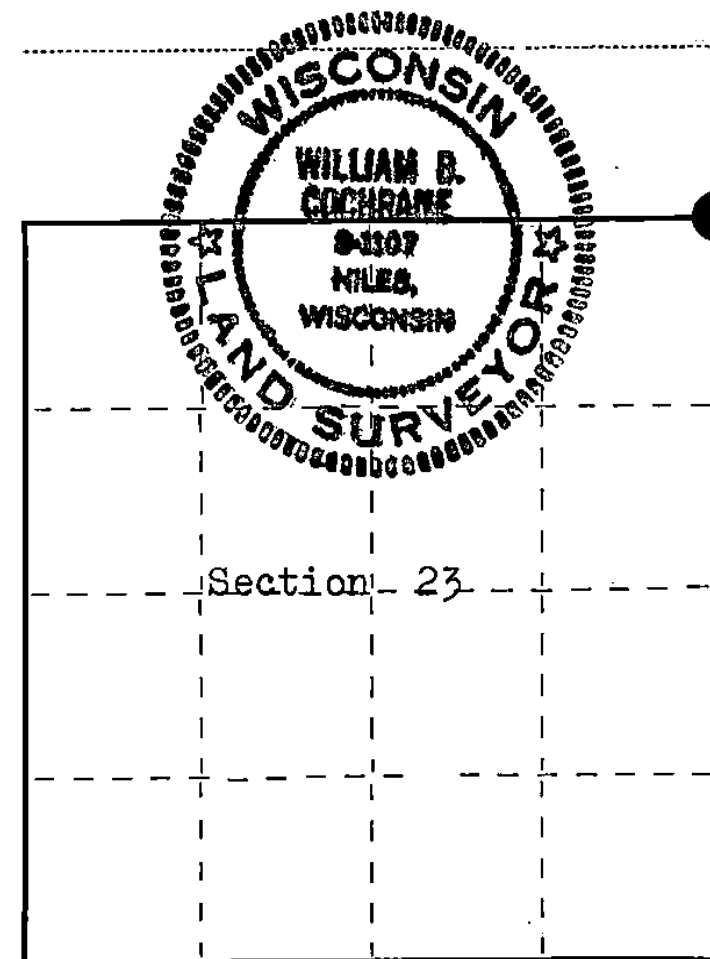
State of Wisconsin }
County of Forest } ss.

I William B. Cochrane, do hereby certify that on the 16 th day of August, 19 77, I found evidence of the Northeast Section corner of Section 23 Township 37 North, North, Range 12 East, Fourth Principal Meridian, as described hereon; and that from this evidence I established a new monument and accessories as described hereon to perpetuate the original location of this corner.

Resident witnesses:

Miles H. Cochrane

Brian James



○ = Corner monument restored.

History of original corner establishment:

Surveyed in 1859 by Wm. E. Daugherty
North between Sections 23 and 24.
80.00 chs. Set Post Corner to Sections 13, 14, 23, and 24.
Elm, 10", S 29° W, 60 lks.
Maple, 12", N 2° E, 339 lks.

Description of corner evidence found:

State Highway 32 East and West. County Highway "S" South.
At the intersection of the highway centerlines and with a magnetic locator, I found evidence of an iron object buried beneath the road surface. I did not dig to recover the object. At this position I set a Railroad spike in the blacktop to mark the corner position.

Description of monument and accessories I established to perpetuate the original location of this corner.

From the Railroad spike, I set a 2½" Berntsen, A-1 Federal Monument, 30 inches long, 33.0 feet North, with cap stamped:

T37N R12E, S13, S14, S23, S24, 1977, S-1107, REFERENCE MONUMENT 33FT

From the Railroad spike: Power Pole #3712-13LI, bears N 34° E, 42.57 ft.
Power Pole #3712-24WL, bears S 66° E, 70.18 ft.

No other accessories were available.

Dated at Hiles, Wis., this 22 nd day of August, 19 77.

Signature William B. Cochrane Title Land Surveyor Registration No. S-1107
(County Surveyor, Registered Land Surveyor, or other duly authorized official)

Office of Register of Deeds, County of FOREST, I hereby certify that the within instrument was filed in this office for record on the 23rd day of AUGUST, 19 77 at 10:10 o'clock A. M.

Eugene Stutzman
(Register of Deeds)

DOCUMENT NUMBER --- **112174**

By _____ Deputy

FORM 985 H. C. MILLER CO., MILWAUKEE

43712140000