

CORTNEY BRITTEN CLEEREMAN
REGISTER OF DEEDS
FOREST COUNTY WI
PAGES: 1

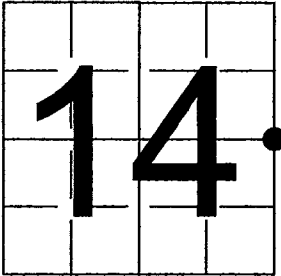
INDEX#: L21

U. S. PUBLIC LAND SURVEY MONUMENT RECORD

NOTE: This form is intended and designed to fulfill all requirements of Wisconsin Administrative Code, Chapter A-E 7.08 U.S. Public Land Survey Monument Record (3) (a-i)

A-E 7.08(3)(a) Identity of corner:
East 1/4 Corner Section 14,
Township 37 North, Range 12 East
of the Fourth Principal Meridian,
Town of Hiles, Forest County,
Wisconsin

WISCRS - FOREST COUNTY
N: 613,769.539 USft (XXX,XXX.XXX)
E: 825,297.567 USft (XXX,XXX.XXX)
Datum: NAD83 (2011)
GNSS Method RTK
GNSS Control WISCORS VRS



The coordinate value shown has been verified by the average of two or more GPS observations at a markedly different time. Coordinates shown in parenthesis are previously published values.

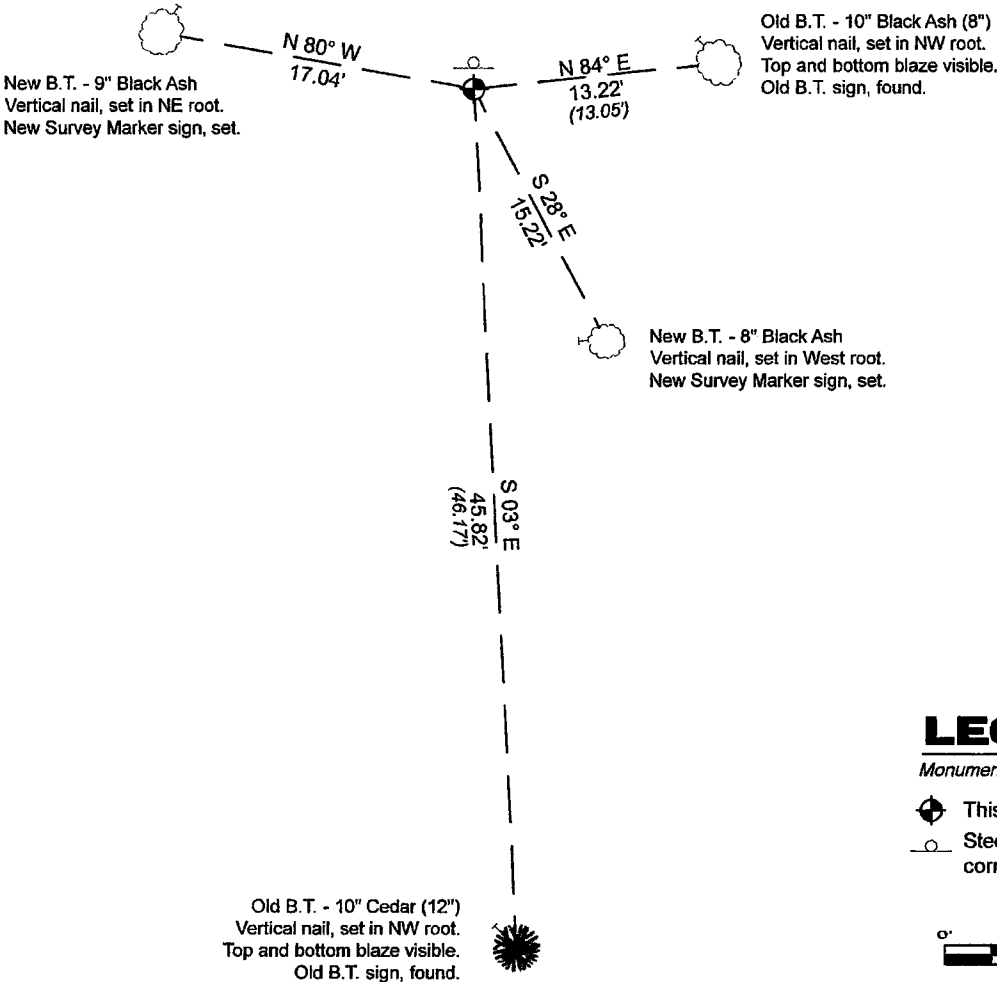
A-E 7.08(3)(b)

Original Surveyor: William E. Daugherty - August 17, 1859 to August 23, 1859
Cedar 15 - N 55° E 24 Links, Cedar 10 - S 88° W 19 Links

See previous U.S.Public Land Survey Monument Record - L-21 - October 25, 1989 - Surveyor 1665 - John C. Schulke. THENCE:

February 6, 2024 - I found a 2.5" diameter aluminum pipe, with a 3.25" diameter aluminum cap, stamped to identify the corner location. I also found 2 of Schulke's bearing trees and his steel sign post. The monument extends ±12" above grade. I established 2 new reference monuments as shown below.

A-E 7.08(3)(c)(d) Plan view of corner with references to at least 4 witness monuments.

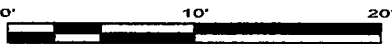


Bearings listed to the nearest second are referenced to the:
Wisconsin County Coordinate Reference System,
FOREST County Zone.
All other bearings are magnetic.

LEGEND

Monument sizes = outside diameter measurements.

- This Corner
- Steel sign post, found ±1.2 feet north of corner.

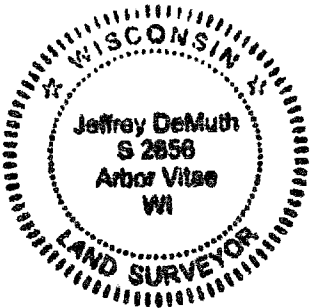


A-E 7.08(3)(e) 1989 Surveyor set a 2 1/2" aluminum monument, I found the same in 2024.

A-E 7.08(3)(f) I accept this monument in good faith as a FOUND PERPETUATED LOCATION of the corner.
A-E 7.08(3)(g)(h) This corner was previously determined through lost-corner-proportionate methods.

A-E 7.08(3)(i) I, Jeffrey L. DeMuth, Professional Land Surveyor No. S-2656, hereby certify that the corner location on this record was determined by me or under my direction and control, and that this U.S. Public Land Survey Monument Record is correct and complete to the best of my knowledge, and belief.

SIGNATURE February 14, 2024
DATE



43712142000

43712142000

L21

Stock No. 26273

DOCUMENT NUMBER

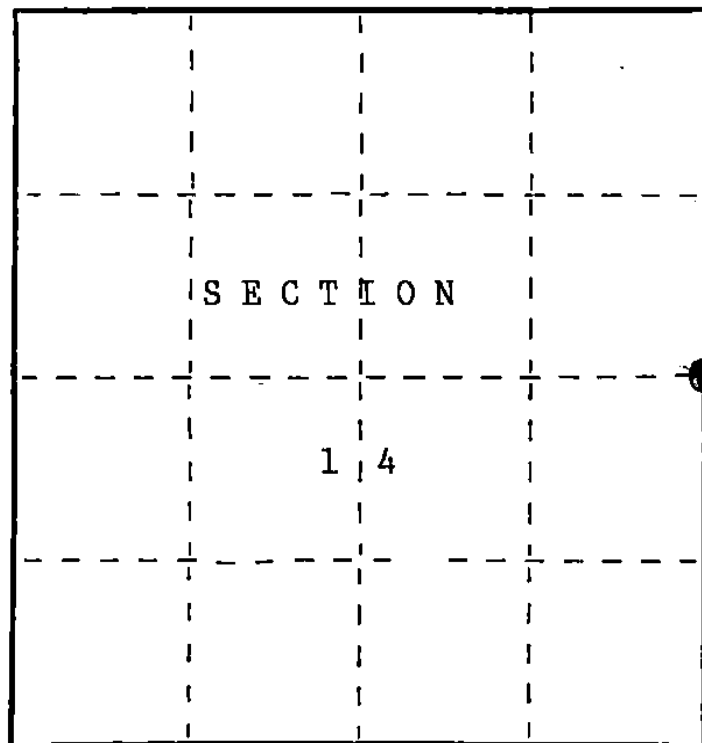
139263

U.S. PUBLIC LAND SURVEY MONUMENT RECORD

L-21
Index No.State of Wisconsin }
County of Forest } ss.

I, John Schulke, do hereby
 certify that on the 22nd day
 of August, 1989, I found
 evidence of the East Quarter
 corner of Section 14
Township 37, North, Range
12 East, Fourth Principal Meridian,
 as described hereon; and that from this evidence
 I established a new monument and accessories
 as described hereon to perpetuate the original
 location of this corner.

Resident witnesses:



● = Corner monument restored.

History of original corner establishment:

In 1859, Original Government Surveyed by Wm. E. Daugherty. Set a wood post with the
 following corner references: Cedar 15" N55°E 24 lks.
 Cedar 10" S88°W 19 lks.

In 1935, A. R. Baken recovered a post and two bearing trees. Placed a new post at the
 corner.

Description of corner evidence found:

In 1989, John Schulke found no evidence at the corner.

Description of monument and accessories I established to perpetuate the original location of this corner.

Set a 2 1/2" dia. X 60" aluminum magnetic cap monument stamped to identify the corner.
 Set a steel sign post 1.2 ft. North of the monument. The following corner references:
 Cedar 10" West 36.71 ft.
 Black Ash 8" N84°E 13.05 ft.
 Cedar 12" S03°E 46.17 ft.
 Black Ash 7" S15°W 19.43 ft.

Dated at Glabeo, Wis., this 25th day of October, 1989.

Signature John C. Schulke Title Register Land Surveyor Registration No. S-1665
 (County Surveyor, Registered Land Surveyor, or other duly authorized official)

Office of Register of Deeds, County of Forest, I hereby certify that the within
 instrument was filed in this office for record on the 8th day of March, 1990
 at 1:00 o'clock P. M.

Paul Aschenbrenner
 (Register of Deeds)

By _____ Deputy

43712142000

e) Describe any material discrepancy between the location of the corner as restored or reestablished and the location of that corner as previously restored or reestablished by distance and direction: Show the discrepancy on the plan view drawing under (d), above. Show the distances between the corner as previously restored or reestablished and (1) the corner as restored or reestablished, and (2) to at least 2 of the witness monuments shown on the drawing in (d), above.

No.

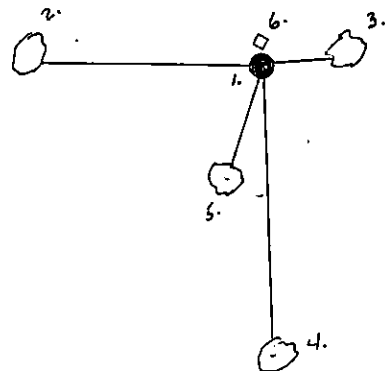
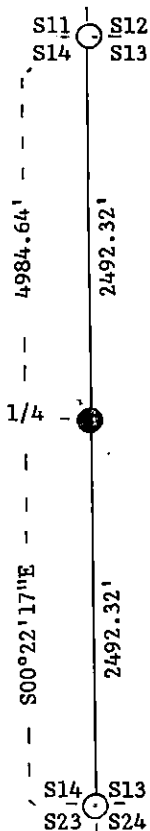
(f) Was the corner restored through acceptance of (1) an obliterated evidence location, or, (2) a found perpetuated location?

Neither

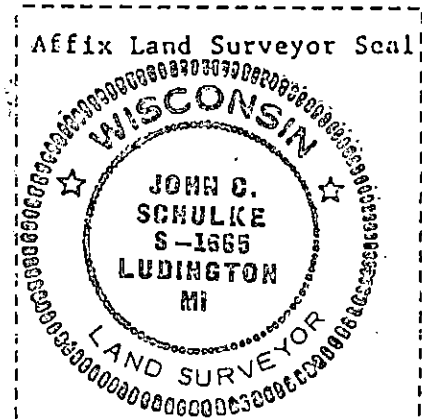
(g&h) Was the corner reestablished through lost corner proportionate methods? If so, show the method, including the directions and distances to other public land survey corners used as evidence or used for proportioning in determining the corner location?

Yes.

QUARTER CORNER
S14|S13



1. 2 1/2" X 60" aluminum monument
2. Cedar 10" West 36.71 ft.
3. Black Ash 8" N84°E 13.05 ft.
4. Cedar 12" S03°E 46.17 ft.
5. Black Ash 7" S15°W 19.43 ft.
6. Steel sign post North 1.2 ft.



(i) I, John Schulke (RLS-1665)
[type or print name] certify that the corner location shown on this record was determined by me or under my direction and control and that this U.S. Public Land Survey Monument Record is correct and complete to the best of my knowledge and belief.

John C Schulke Oct. 25, 1989
Signature Date

Survey requested by: Dale B Staeger 1989
District Ranger Date