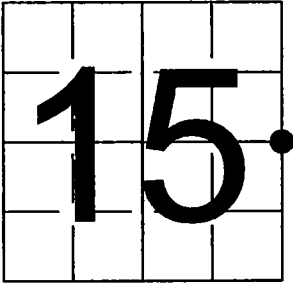


U S PUBLIC LAND SURVEY MONUMENT RECORD

NOTE: This form is intended and designed to fulfill all requirements of Wisconsin Administrative Code, Chapter A-E 7.08 U.S. Public Land Survey Monument Record (3) (a-i)

A-E 7.08(3)(a) Identity of corner:  
EAST 1/4 CORNER SECTION 15,  
TOWNSHIP 37 NORTH,  
RANGE 12 EAST OF THE 4TH PM,  
TOWN OF HILES, COUNTY OF FOREST

WISCRS - FOREST COUNTY  
N: 613,538.021 USft (XXX,XXX.XXX)  
E: 819,805.770 USft (XXX,XXX.XXX)  
Datum: NAD83 (2011)  
GNSS Method RTK  
GNSS Control WISCORS VRS



The coordinate value shown has been verified by the average of two or more GPS observations at a markedly different time. Coordinates shown in parenthesis are previously published values.

A-E 7.08(3)(b)

Original Surveyor: William E. Daugherty

Date of Original Survey	Commenced:	August 17, 1859	Original Accessories:
	Completed:	August 23, 1859	Elm 10 S 42° E 19 Links
			Elm 9 S 32° W 33 Links

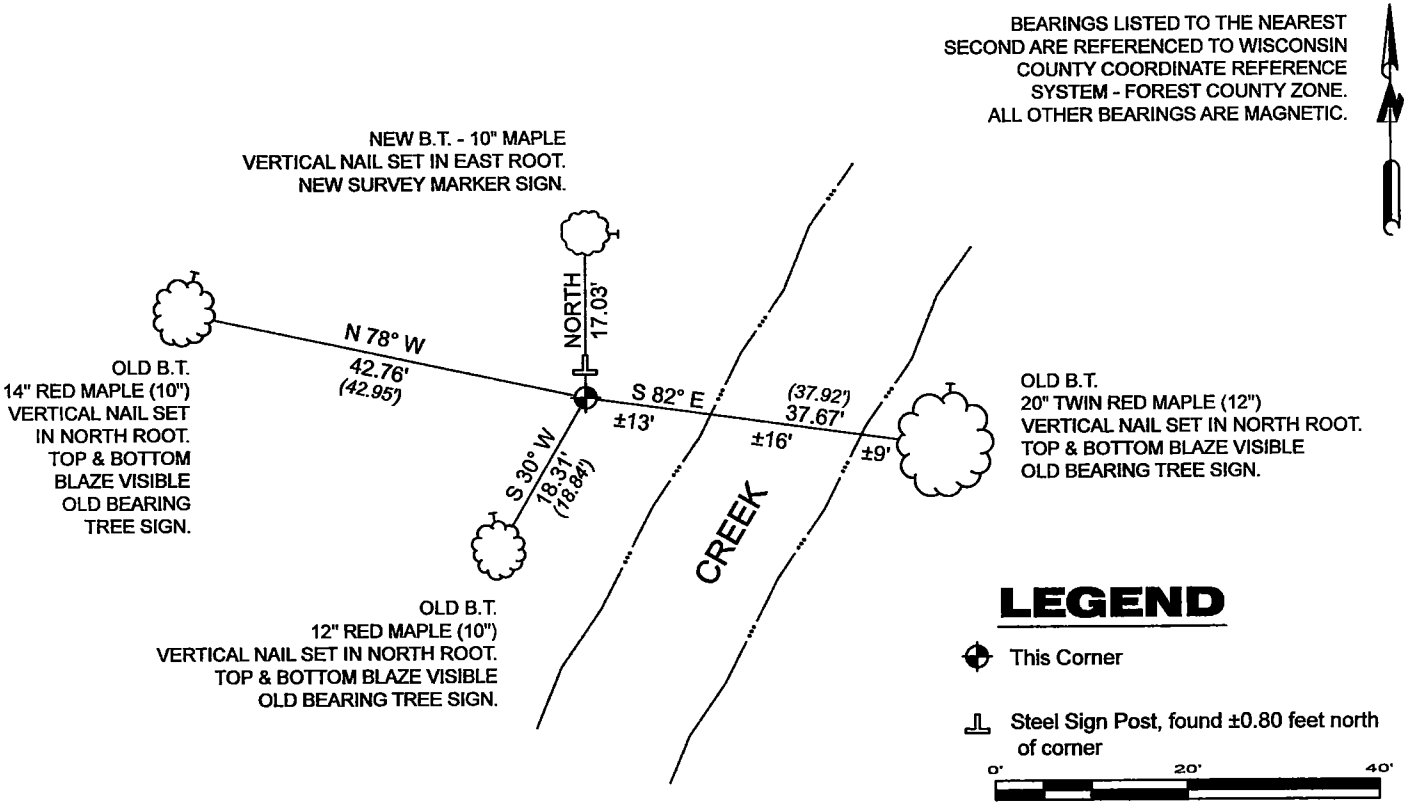
See previous U.S.Public Land Survey Monument Record - L-17- November 3, 1889 - Surveyor 1665 - John C. Schulke  
THENCE:

September 4, 2001 - Surveyor 2197 - Michael A. Trembl - indicates this position as "2 1/2" dia. aluminum monument" on Forest County Surveyor File #371214-20010904.

November 15, 2005 - Surveyor 2197 - Michael A. Trembl - indicates this position as "2 1/2" dia. aluminum pipe monument" on Forest County Surveyor File #371215-20051115.

October 12, 2023 - I found a 2.5" diameter aluminum pipe monument with a 3.3" diameter aluminum cap stamped to identify the corner location. I also found 3 of Schulke's bearing trees alive and in good condition, and one dead and laying down. I established 1 new bearing tree as shown below.

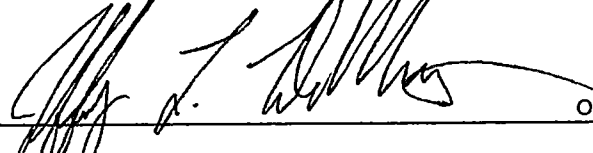
A-E 7.08(3)(c)(d) Plan view of corner with references to at least 4 witness monuments.

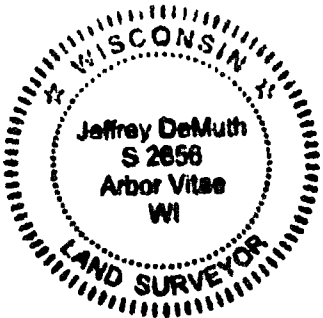


A-E 7.08(3)(e) 1859 Surveyor set a post, 1989 Surveyor found a 1 1/4" iron pipe, and replaced with a 2 1/2" dia. aluminum monument, 2001 & 2005 found the same, as did I in 2023.

A-E 7.08(3)(f) I accept this monument as a FOUND PERPETUATED LOCATION of the corner.  
A-E 7.08(3)(g)(h) This corner was not determined through lost-corner-proportionate methods.

A-E 7.08(3)(i) I, Jeffrey L. DeMuth, Professional Land Surveyor No. S-2656, hereby certify that the corner location on this record was determined by me or under my direction and control, and that this U.S. Public Land Survey Monument Record is correct and complete to the best of my knowledge, and belief.

SIGNATURE  DATE October 13, 2023



# U.S. PUBLIC LAND SURVEY MONUMENT RECORD

Index No. L-17

State of Wisconsin }  
County of FOREST } ss.

I, John Schulke, do hereby certify that on the 9th day of August, 1989, I found evidence of the West Quarter corner of Section 14 Township 37 North, Range 12 East, Fourth Principal Meridian, as described hereon; and that from this evidence I established a new monument and accessories as described hereon to perpetuate the original location of this corner.

Resident witnesses:

William Cochrane

History of original corner establishment:

In 1859, Original Government surveyed by Wm. E. Daugherty. Set a wood post with the following corner references: Elm 10" S42°E 19 lks.  
Elm 9" S32°W 33 lks.

Description of corner evidence found:

In 1989, John Schulke found an 1 1/4" dia. iron pipe which has been accepted as the corner by property owners and land surveyors. I accept the location as the best available evidence of the original corner.

Description of monument and accessories I established to perpetuate the original location of this corner.

Replaced 1 1/4" dia. iron pipe with a 2 1/2" dia. X 36" aluminum magnetic cap monument stamped to identify the corner. Monument placed in a mound of stones. Set a steel sign post 0.8 ft. North of the monument. The following corner references:

Red Maple	10"	S30°W	18.84 ft.
Red Maple	10"	N78°W	42.95 ft.
Black Ash	10"	N27°E	12.80 ft.
Twin Red Maple	12"	S82°E	37.92 ft.

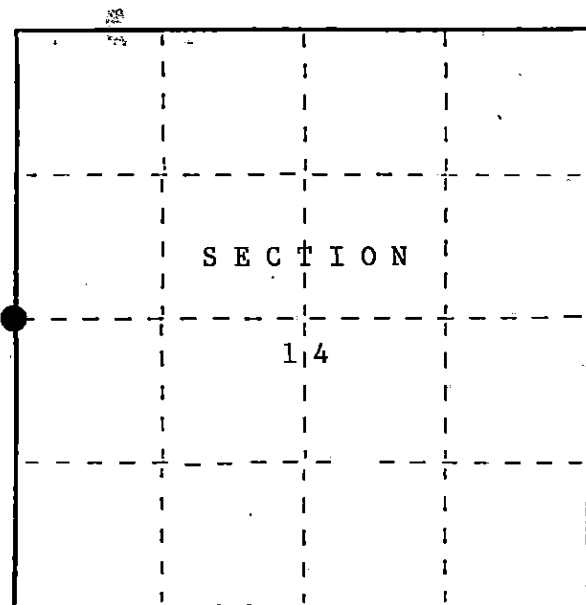
Dated at Ludington, MI, this 3rd day of November, 1989

Signature, John C. Schulke Title Register Land Surveyor Registration No. S-1665  
(County Surveyor, Registered Land Surveyor, or other duly authorized official)

Office of Register of Deeds, County of Forest, I hereby certify that the within instrument was filed in this office for record on the 8th day of March, 1990 at 1:00 o'clock P. M.

Paul H. Schreiner  
(Register of Deeds)

By Deputy



● = Corner monument restored.

FORM NO. 985-A

H.C. Miller Company  
REGISTERED SURVEYORS

Stock No. 26273

DOCUMENT NUMBER

139262

43712152000

- (e) Describe any material discrepancy between the location of the corner as restored or reestablished and the location of that corner as previously restored or reestablished by distance and direction. Show the discrepancy on the plan view drawing under (d), above. Show the distances between the corner as previously restored or reestablished and (1) the corner as restored or reestablished, and (2) to at least 2 of the witness monuments shown on the drawing in (d), above.

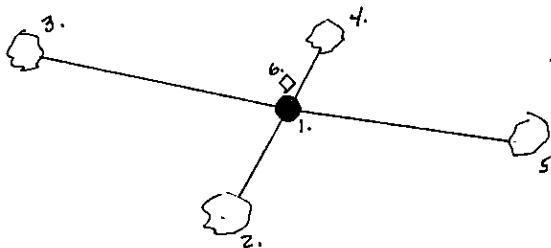
No.

- (f) Was the corner restored through acceptance of (1) an obliterated evidence location, or, (2) a found perpetuated location?

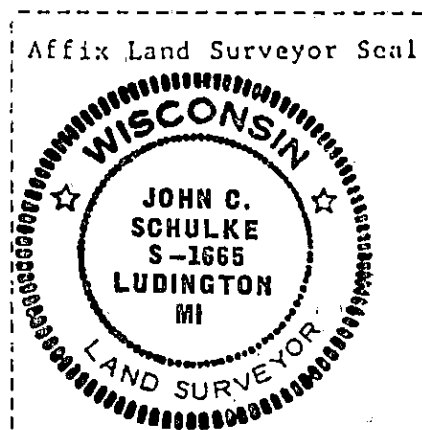
(2) a found perpetuated location.

- (g&h) Was the corner reestablished through lost corner proportionate methods? If so, show the method, including the directions and distances to other public land survey corners used as evidence or used for proportioning in determining the corner location?

No.



- |    |   |
|----|---|
| 1. | Replaced 1 1/4" dia. iron pipe with a 2 1/2" dia. X 36" aluminum magnetic cap monument placed in a mound of stones. |
| 2. | Red Maple 10" S30°W 18.84 ft.   |
| 3. | Red Maple 10" N78°W 42.95 ft.   |
| 4. | Black Ash 10" N27°E 12.80 ft.   |
| 5. | Twin Red Maple 12" S82°E 37.92 ft.  |
| 6. | Steel sign post North 0.8 ft.   |



- (i) I, John Schulke (RLS-1665)  
(type or print name) certify that the corner location shown on this record was determined by me or under my direction and control and that this U.S. Public Land Survey Monument Record is correct and complete to the best of my knowledge and belief.

John C. Schulke      Nov 3rd, 1989  
Signature      Date

Survey requested by: Dale Stange      1989  
District Ranger      Date