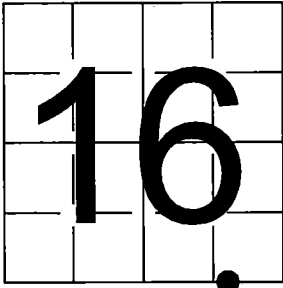


U. S. PUBLIC LAND SURVEY
MONUMENT RECORD

NOTE: This form is intended and designed to fulfill all requirements of Wisconsin Administrative Code, Chapter A-E 7.08 U.S. Public Land Survey Monument Record (3) (a-i)

A-E 7.08(3)(a) Identity of corner:
Meander Corner - South line Section 16,
Township 37 North, Range 12 East
of the Fourth Principal Meridian,
Town of Hiles, Forest County, Wisconsin

WISCRS - FOREST COUNTY
N: 611,303.536 USft (XXX,XXX.XXX)
E: 814,191.851 USft (XXX,XXX.XXX)
Datum: NAD83 (2011)
GNSS Method RTN
GNSS Control WISCORS VRS



The coordinate value shown has been verified by the average of two or more GPS observations at a markedly different time. Coordinates shown in parenthesis are previously published values.

A-E 7.08(3)(b)

Original Surveyor: William E. Daugherty - August 17, 1859 to August 23, 1859
Fir 8 - N 58° W, 12 Links, Fir 8 - S 50° W, 37 Links

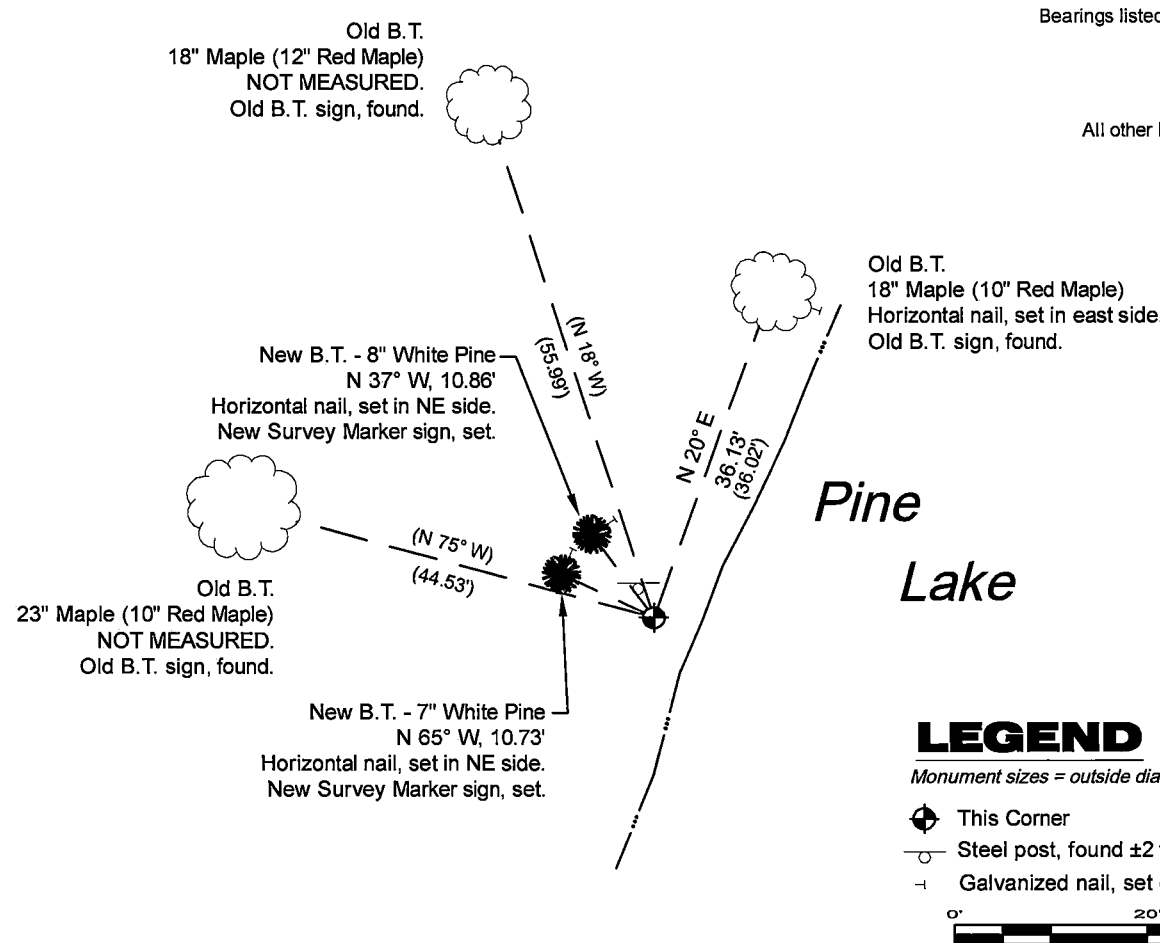
See previous U.S. Public Land Survey Monument Record - N-12 & 13 - January 5, 1987 - Surveyor 1665 - John C. Schulke - THENCE:

- June 6, 1990 - Surveyor 1731 - Kip W. Soder - indicates this position as "1-1/4" axle shaft found" on county record Map #371216-19900606.
- February 5, 2021 - Surveyor 3127 - James E. Anderson - indicates this position as "1" dia. axle shaft with gear top" on county record Map #371221-20210205.

August 7, 2025 - I found a 1.5" diameter iron pipe truck axle with a 4.8" diameter iron gear head. The monument is ±4 feet from the shore of Pine Lake, extends ±18" above grade and is leaning east. I measured the top center of the monument. I also found 3 of Schulke's bearing trees alive and in good condition. I established 2 new reference monuments as shown below.

A-E 7.08(3)(c)(d) Plan view of corner with references to at least 4 witness monuments.

Bearings listed to the nearest second
are referenced to the:
Wisconsin Coordinate
Reference System,
Forest County Zone.
All other bearings are magnetic.



LEGEND

- Monument sizes = outside diameter measurements.
- ⊕ This Corner
 - Steel post, found ±2 feet NW of corner
 - ⊖ Galvanized nail, set or nail found as shown

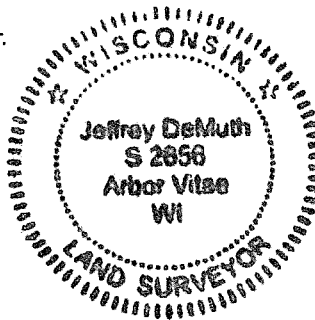
A-E 7.08(3)(e) 1859 Surveyor set a post, 1987 Surveyor found a 1 1/4" diameter truck axle, subsequent Surveyors found the same, as did I in 2025.

A-E 7.08(3)(f) I accept this monument in good faith as a FOUND PERPETUATED LOCATION of the corner.
A-E 7.08(3)(g)(h) This corner was not determined through lost-corner-proportionate methods.

A-E 7.08(3)(i) I, Jeffrey L. DeMuth, Professional Land Surveyor No. S-2656, hereby certify that the corner location on this record was determined by me or under my direction and control, and that this U.S. Public Land Survey Monument Record is correct and complete to the best of my knowledge, and belief.

Signature

September 16, 2025
Date



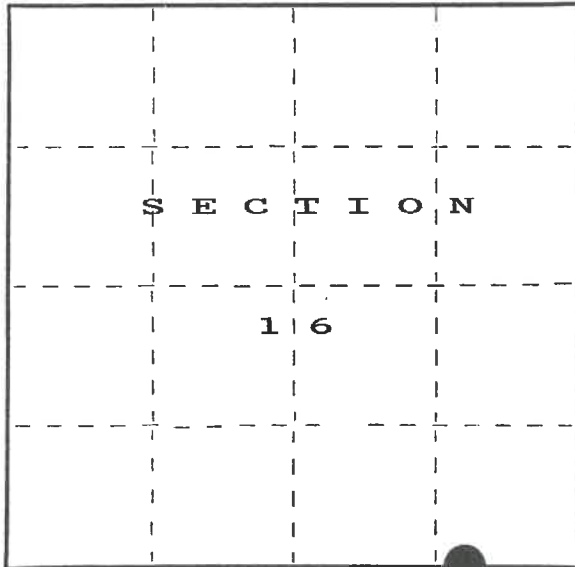
43712160008

Stock No. 26273

DOCUMENT NUMBER
132178REGISTER'S OFFICE
Forest County, Wis.Received for record this 24 day
of January A.D., 19 87 at
2:00 o'clock PM and recorded
in Vol. CORNER RESTORATIONS
pages 12 & 13Paul Ascherbrenner
Register of DeedsState of Wisconsin }
County of FOREST } ss.

I, John C. Schulke, do hereby
certify that on the 12th day
of June, 19 86, I found
evidence of the Meander
corner of Sections 16 and 21.
Township 37, North, Range
12 East, Fourth Principal Meridian,
as described hereon; and that from this evidence
I established a new monument and accessories
as described hereon to perpetuate the original
location of this corner.

Resident witnesses:



○ = Corner monument restored.

U.S. PUBLIC LAND SURVEY MONUMENT RECORD

Index No. N-12 & 13

History of original corner establishment:

Original Government Survey in 1859 by William Daugherty.

Fir	8"	N58°W	12 links
Fir	8"	S50°W	87 links

Description of corner evidence found:
Recovered 1 1/4" diameter truck axle.
No bearing trees.

Description of monument and accessories I established to perpetuate the original location of this corner.

Blazed, scribed and painted the following bearing trees:

Red Maple	12"	N18°W	55.99 feet
Twin Red Maple	10"	N75°W	44.53 feet
Red Maple	10"	N20°E	36.02 feet
Red Maple	10"	S50°W	33.41 feet
Steel sign post		Northwest	2.1 feet

Dated at Ludington, Mich., this 5th day of January, 19 87.Signature John C. Schulke Title Land Surveyor Registration No. S-1665
(County Surveyor, Registered Land Surveyor, or other duly authorized official)

Office of Register of Deeds, County of Forest, I hereby certify that the within
instrument was filed in this office for record on the 24th day of February, 19 87
at 2:00 o'clock P. M.

Paul Ascherbrenner
(Register of Deeds)

By _____ Deputy

43712160008

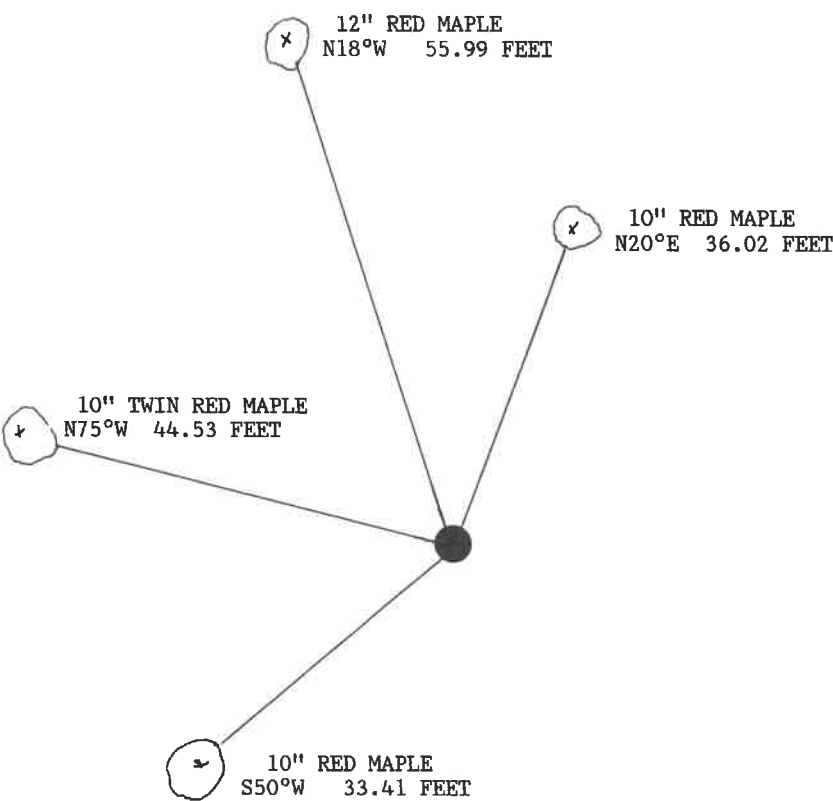
(e) Describe any material discrepancy between the location of the corner as restored or reestablished and the location of that corner as previously restored or reestablished by distance and direction. Show the discrepancy on the plan view drawing under (d), above. Show the distances between the corner as previously restored or reestablished and (1) the corner as restored or reestablished, and (2) to at least 2 of the witness monuments shown on the drawing in (d), above.

No discrepancy, accepted existing corner as the best evidence.

(f) Was the corner restored through acceptance of (1) an obliterated evidence location, or, (2) a found perpetuated location?

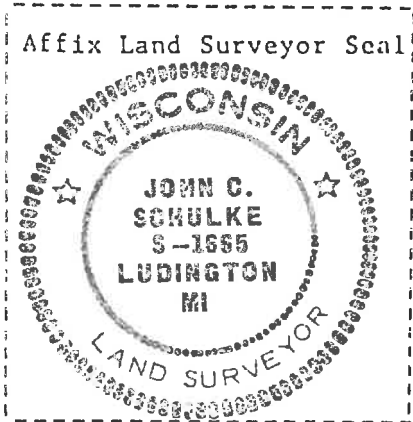
The corner was restored through the acceptance of a found perpetuated location.

(g&h) Was the corner reestablished through lost corner proportionate methods? If so, show the method, including the directions and distances to other public land survey corners used as evidence or used for proportioning in determining the corner location?



QUARTER CORNER

$$\begin{array}{r} S16 \\ + \\ S21 \end{array}$$



(i) I, John C. Schulke
(type or print name) certify that the corner location shown on this record was determined by me or under my direction and control and that this U.S. Public Land Survey Monument Record is correct and complete to the best of my knowledge and belief.

John C. Schulke
Signature

January 5th, 1987
Date

Certificate Ready for Filing: Dale S. Stage 2/24/87
District Ranger Date