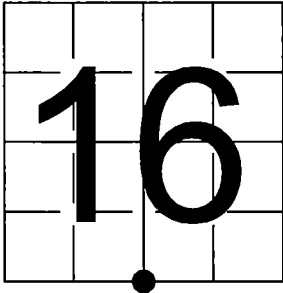


U.S. PUBLIC LAND SURVEY
MONUMENT RECORD

NOTE: This form is intended and designed to fulfill all requirements of Wisconsin Administrative Code, Chapter A-E 7.08 U.S. Public Land Survey Monument Record (3) (a-i)

A-E 7.08(3)(a) Identity of corner:
South 1/4 Corner Section 16,
Township 37 North, Range 12 East
of the Fourth Principal Meridian,
Town of Hiles, Forest County, Wisconsin

WISCRS - FOREST COUNTY
N: 611,305.905 USft (XXX,XXX.XXX)
E: 812,560.128 USft (XXX,XXX.XXX)
Datum: NAD83 (2011)
GNSS Method RTN
GNSS Control WISCORS VRS



The coordinate value shown has been verified by the average of two or more GPS observations at a markedly different time. Coordinates shown in parenthesis are previously published values.

A-E 7.08(3)(b)

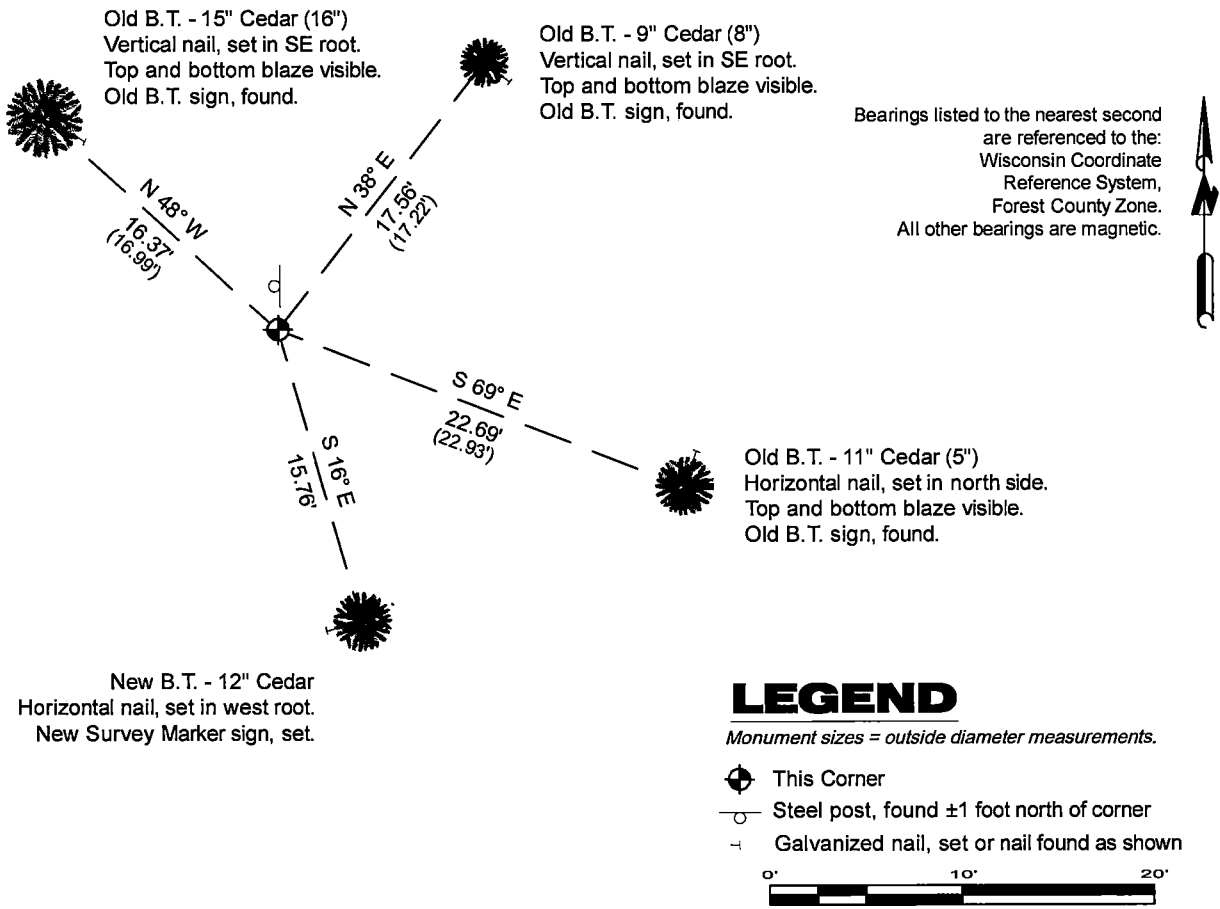
Original Surveyor: William E. Daugherty - August 17, 1859 to August 23, 1859
Cedar 10, N 11° E, 13 links - Cedar 10, S 22° E, 12 links

See previous U.S. Public Land Survey Monument Record - N-11 - January 5, 1987 - Surveyor 1665 - John C. Schulke - THENCE:

- June 6, 1990 - Surveyor 1731 - Kip W. Soder - indicates this position as "2-1/2" dia aluminum pipe monument" on county record Map #371216-19900606.
- July 6, 2017 - Surveyor 1523 - Todd J. Loftus - indicates this position as "2.5" capped aluminum mon." on county record Map #371221-20170706.
- February 5, 2021 - Surveyor 3127 - James E. Andersson - indicates this position as "Forest County alum. mon. found" on county record Map #371221-20210205.

August 7, 2025 - I found a 2.4" diameter aluminum pipe monument with a 3.25" diameter Forest County aluminum cap stamped to identify the corner location. The monument is in a cedar swamp, near an elevated tree stand and flush with grade. I also found 3 of Schulke's bearing trees alive and in good condition. I established 1 new reference monuments as shown below.

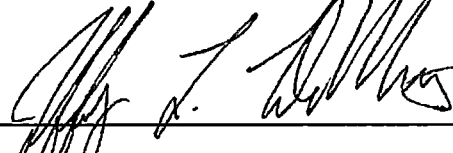
A-E 7.08(3)(c)(d) Plan view of corner with references to at least 4 witness monuments.

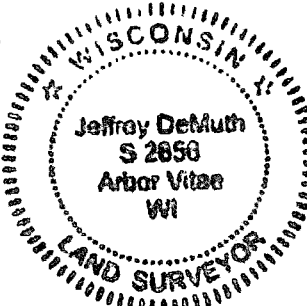


A-E 7.08(3)(e) 1859 Surveyor set a post, 1987 Surveyor found a 2 1/2" diameter aluminum capped monument, subsequent Surveyors found the same, as did I in 2025.

A-E 7.08(3)(f) I accept this monument in good faith as a FOUND PERPETUATED LOCATION of the corner.
A-E 7.08(3)(g)(h) This corner was not determined through lost-corner-proportionate methods.

A-E 7.08(3)(i) I, Jeffrey L. DeMuth, Professional Land Surveyor No. S-2656, hereby certify that the corner location on this record was determined by me or under my direction and control, and that this U.S. Public Land Survey Monument Record is correct and complete to the best of my knowledge, and belief.


SIGNATURE
September 16, 2025
DATE



43712160020

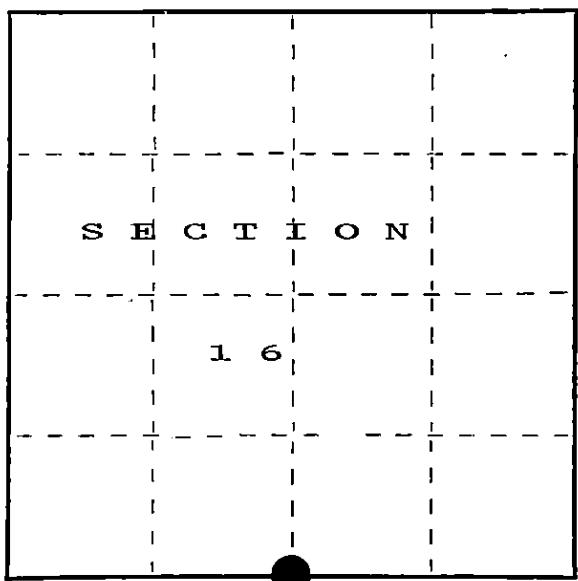
U.S. PUBLIC LAND SURVEY MONUMENT RECORD

Index No. N-11

State of Wisconsin }
County of FOREST } ss.

I, John C. Schulke, do hereby
certify that on the 13th day
of June, 1986, I found
evidence of the South Quarter
corner of Section 16
Township 37, North, Range
12 East, Fourth Principal Meridian,
as described hereon; and that from this evidence
I established a new monument and accessories
as described hereon to perpetuate the original
location of this corner.

Resident witnesses:



○ = Corner monument restored.

History of original corner establishment:

Original Government Survey in 1859 by William Daugherty.

| | | | | | |
|-------------------------|-------|-----|-------|----|------|
| Original Bearing trees: | Cedar | 10" | N11°E | 13 | lks. |
| | Cedar | 10" | S22°E | 12 | lks. |

Description of corner evidence found:

Found 2 1/2" dia. aluminum capped monument stamped to identify the corner set by William Cochrane (S-1107) in 1983.

Found blaze and scribing on Cedar tree 13" N86°W 13.58 feet

Description of monument and accessories I established to perpetuate the original location of this corner.

Blazed, scribed, painted and tagged the following bearing trees:

| | | | |
|-----------------|-----|-------|------------|
| Cedar | 16" | N48°W | 16.99 feet |
| Cedar | 8" | N38°E | 17.22 feet |
| Cedar | 5" | S69°E | 22.93 feet |
| Cedar | 12" | S16°W | 69.88 feet |
| Steel sign post | | North | 1.0 foot |

Dated at Ludington, Michigan, Wis., this fifth day of January, 1987.

Signature John C. Schulke Title Land Surveyor Registration No. S-1665
(County Surveyor, Registered Land Surveyor, or other duly authorized official)

Office of Register of Deeds, County of Forest, I hereby certify that the within
instrument was filed in this office for record on the 24th day of February, 1987
at 2:00 o'clock P. M.

Paul Aschenbrenner
(Register of Deeds)

By _____ Deputy

REGISTER'S OFFICE

Forest County, Wis.

Received for record this 24th day
of February, 1987, at
2:00 o'clock P. M. and recorded
in Vol. CORNER RESTORATIONS
page 8-11

Paul Aschenbrenner
Register of Deeds

FORM NO. 985-A

H.C. Miller Company
Manufacturers Wisconsin

Stock No. 26273

DOCUMENT NUMBER
132177

43712160020

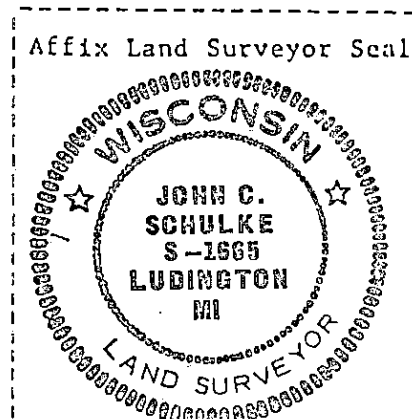
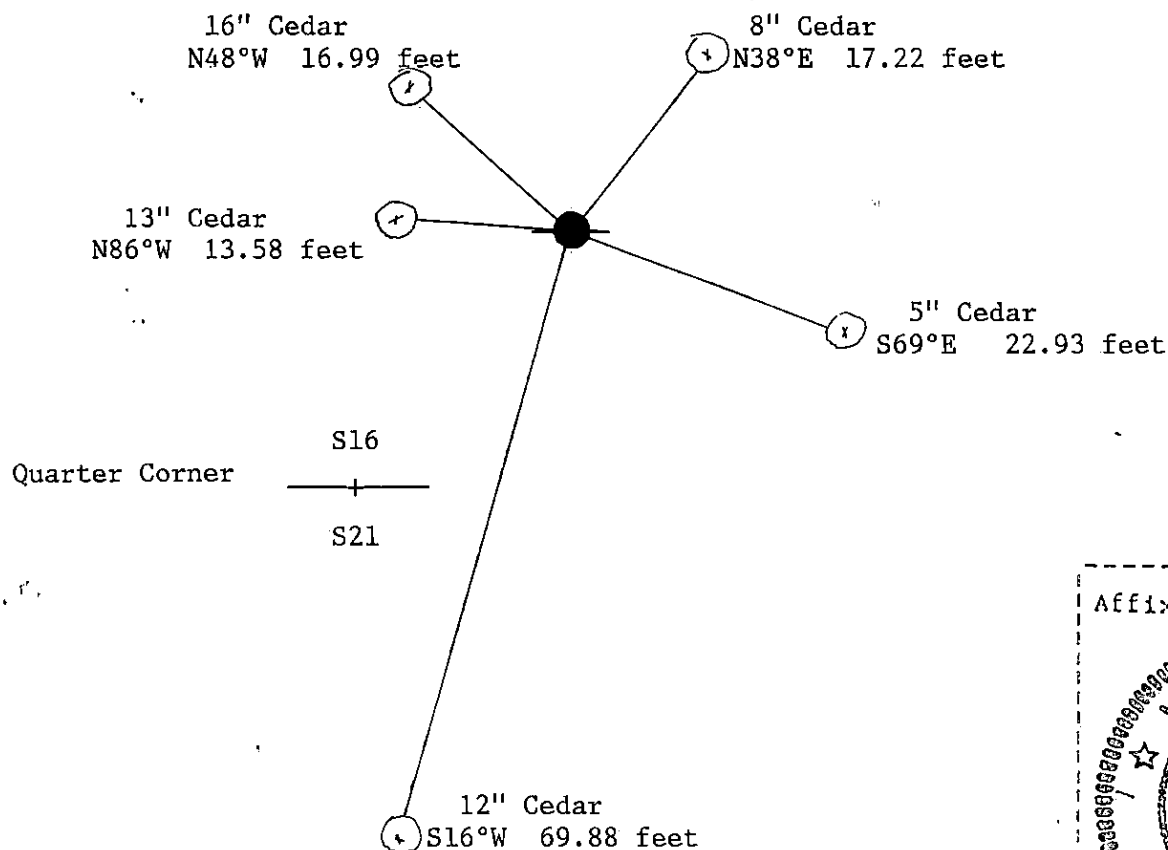
- (e) Describe any material discrepancy between the location of the corner as restored or reestablished and the location of that corner as previously restored or reestablished by distance and direction. Show the discrepancy on the plan view drawing under (d), above. Show the distances between the corner as previously restored or reestablished and (1) the corner as restored or reestablished, and (2) to at least 2 of the witness monuments shown on the drawing in (d), above.

No discrepancy, accepted existing corner as the best evidence.

- (f) Was the corner restored through acceptance of (1) an obliterated evidence location, or, (2) a found perpetuated location?

The corner was restored through the acceptance of a found perpetuated location.

- (g&h) Was the corner reestablished through lost corner proportionate methods? If so, show the method, including the directions and distances to other public land survey corners used as evidence or used for proportioning in determining the corner location?



- (i) I, John C. Schulke
(type or print name) certify that the corner location shown on this record was determined by me or under my direction and control and that this U.S. Public Land Survey Monument Record is correct and complete to the best of my knowledge and belief.

John C. Schulke Jan 5th, 1987
Signature Date

Certificate Ready for Filing: Dale B. Stange 2/24/87
District Ranger Date