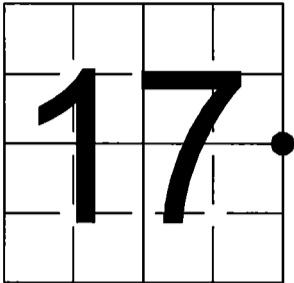


U.S. PUBLIC LAND SURVEY  
MONUMENT RECORD

NOTE: This form is intended and designed to fulfill all requirements of Wisconsin Administrative Code, Chapter A-E 7.08 U.S. Public Land Survey Monument Record (3) (a-l)

A-E 7.08(3)(a) Identity of corner:  
East 1/4 Corner Section 17,  
Township 37 North, Range 12 East  
of the Fourth Principal Meridian,  
Town of Hiles, Forest County, Wisconsin

WISCRS - FOREST COUNTY  
N: 613,548.657 USft (613,548.621)  
E: 809,631.646 USft (809,631.641)  
Datum: NAD83 (2011)  
GNSS Method RTN  
GNSS Control WSCORS VRS



The coordinate value shown has been verified by the average of two or more GPS observations at a markedly different time. Coordinates shown in parenthesis are 2021 measurement values.

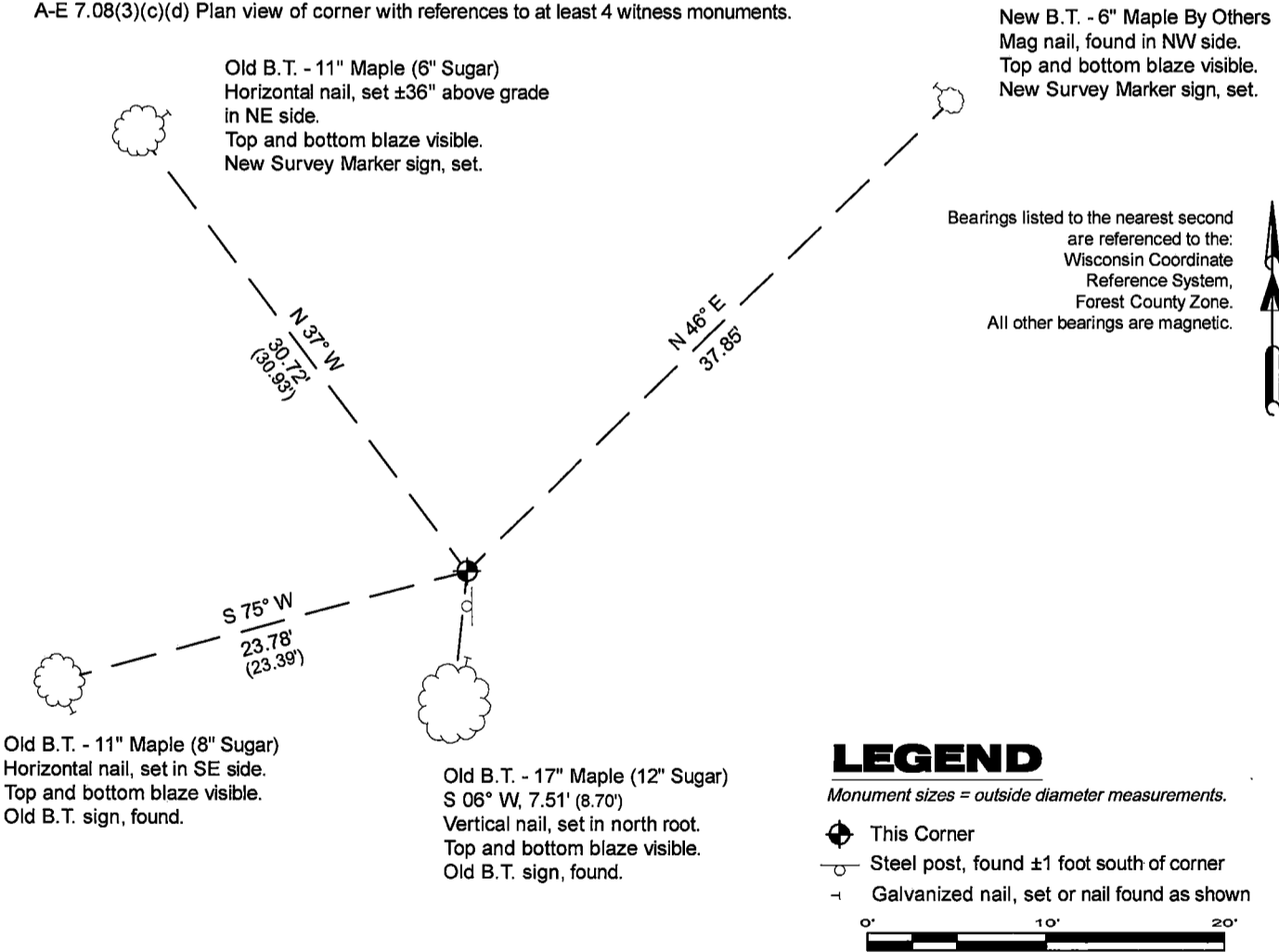
A-E 7.08(3)(b)  
Original Surveyor: William E. Daugherty - August 17, 1859 to August 23, 1859  
Fir 8 - N 53° E, 21 links, Birch 10 - S 27° W, 22 links

See previous Certified Land Corner Restoration - L9 - May 2, 1982 - Surveyor 1558 - Milo E. Stefan - THENCE:

- June 9, 1998 - Surveyor 1935 - Daniel E. Higginbotham - indicates this position as "fd. brass mon." on county record Map #371216-19980609.
- May 17, 2021 - Surveyor 2656 - Jeffrey L. DeMuth - indicates this position as "found Forest Co. aluminum monument" on county record Map #371216-20210517.

August 20, 2025 - I found a 2.4" diameter aluminum pipe monument with a 3.25" diameter Forest County aluminum cap stamped to identify the corner location. The monument is on high land with the remains of a barbed wire fence heading north and east from the monument. The monument is in a rock pile and extends flush with grade. I also found 3 of Stefan's bearing trees alive and in good condition. I established 1 new reference monuments as shown below.

A-E 7.08(3)(c)(d) Plan view of corner with references to at least 4 witness monuments.



A-E 7.08(3)(e) 1859 Surveyor set a post, 1982 Surveyor set and aluminum monument, subsequent surveyors found the same, as did I in 2025.

A-E 7.08(3)(f) I accept this monument in good faith as a FOUND PERPETUATED LOCATION of the corner.

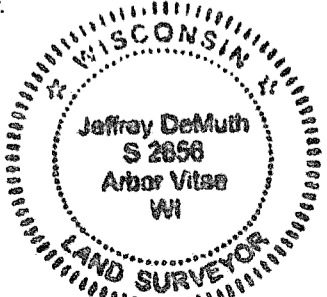
A-E 7.08(3)(g)(h) This corner was not determined through lost-corner-proportionate methods.

A-E 7.08(3)(i) I, Jeffrey L. DeMuth, Professional Land Surveyor No. S-2656, hereby certify that the corner location on this record was determined by me or under my direction and control, and that this U.S. Public Land Survey Monument Record is correct and complete to the best of my knowledge, and belief.

SIGNATURE

September 16, 2025

DATE



43712172000

CERTIFIED LAND CORNER RESTORATION

State of Wisconsin }  
County of Forest } ss.

I, Milo E. Stefan, do hereby certify that on the 13th day of May, 1982, I found evidence of the West Quarter corner of Section 16 Township 37N, Range 12E, Fourth Principal Meridian, as described hereon; and that from this evidence I established a new monument and accessories as described hereon to perpetuate the original location of this corner:

Description of original monument and accessories and subsequent restorations:

Surveyed in 1859 by Wm. Daugherty  
40.00 chains north, set  $\frac{1}{4}$  section wood post  
Fir, 8", N55E, 21 lks., 13.86 feet  
Birch, 10", S27W, 22 lks., 14.52 feet

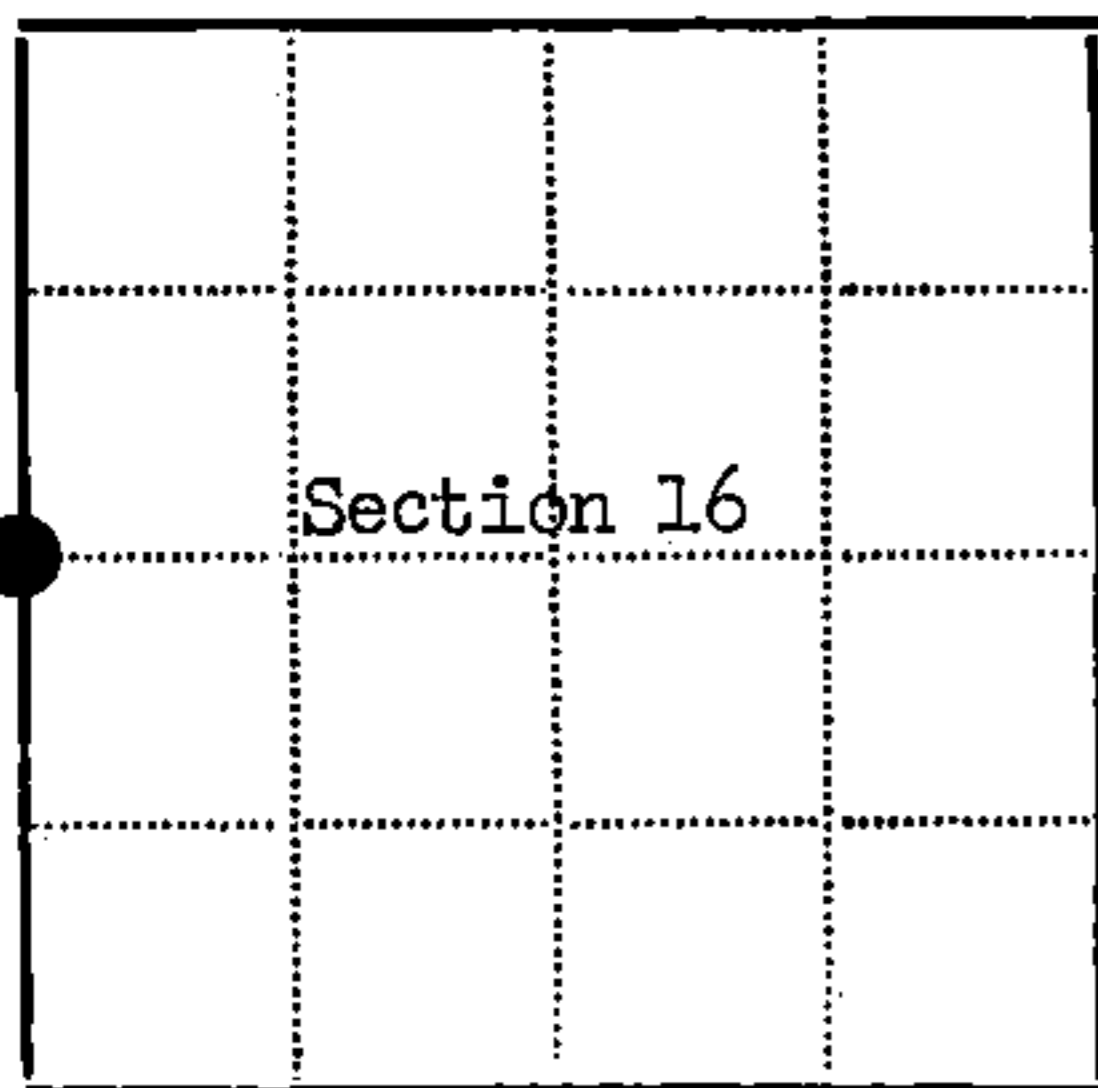
Description of corner evidence found:

Found scribed wood post nailed to fence corner  
Stump hole, S27W, 13.8 feet

Description of monument and accessories I established to perpetuate the location of this corner:

Placed a 2" x 36" aluminum monument in fence corner with tablet stamped as follows:  
T37N, R12E, S17,  $\frac{1}{4}$ , S16, 1982, RLS-1558  
From which the following bear:  
Sugar Maple, 12", S6W, 8.70 feet  
Sugar Maple, 8", S75W, 23.39 feet  
Sugar Maple, 6", N37W, 30.93 feet  
Steel sign post, South, 1.2 feet

DOCUMENT NO.  
**124241**



● - Corner monument restored  
□ -

Resident witnesses.....

Dated at Rhineland Wisconsin, this 2 day of MAY, 1982.

Signature Milo E. Stefan Title Land Surveyor  
(County Surveyor, Registered Land Surveyor, or other duly authorized official)

Surveyors Registration No. RLS-1558

Office of Register of Deeds County of Forest

I hereby certify that the within instrument was filed in this office for record on the 15th day of September, 1983, and was filed in Book No. .... Page No. .... of County Records.

Signature Eugene Stetson Title Register of Deeds

Township 37N, Range 12E, Section 16, Index No. L-9, Page No. 11

4 37 12 17 2000