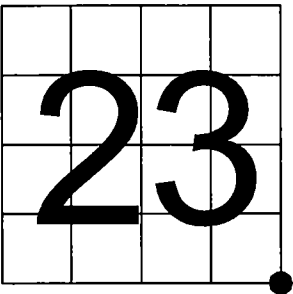


U. S. PUBLIC LAND SURVEY MONUMENT RECORD

NOTE: This form is intended and designed to fulfill all requirements of Wisconsin Administrative Code, Chapter A-E 7.08 U.S. Public Land Survey Monument Record (3) (a-i)

A-E 7.08(3)(a) Identity of corner:
Southeast Corner Section 23,
Township 37 North, Range 12 East
of the Fourth Principal Meridian,
Town of Hiles, Forest County, Wisconsin

WISCORS - FOREST COUNTY
N: 605,927.152 USft (XXX,XXX.XXX)
E: 825,355.826 USft (XXX,XXX.XXX)
Datum: NAD83 (2011)
GNSS Method RTN
GNSS Control WISCORS VRS



The coordinate value shown has been verified by the average of two or more GPS observations at a markedly different time. Coordinates shown in parenthesis are previously published values.

A-E 7.08(3)(b)

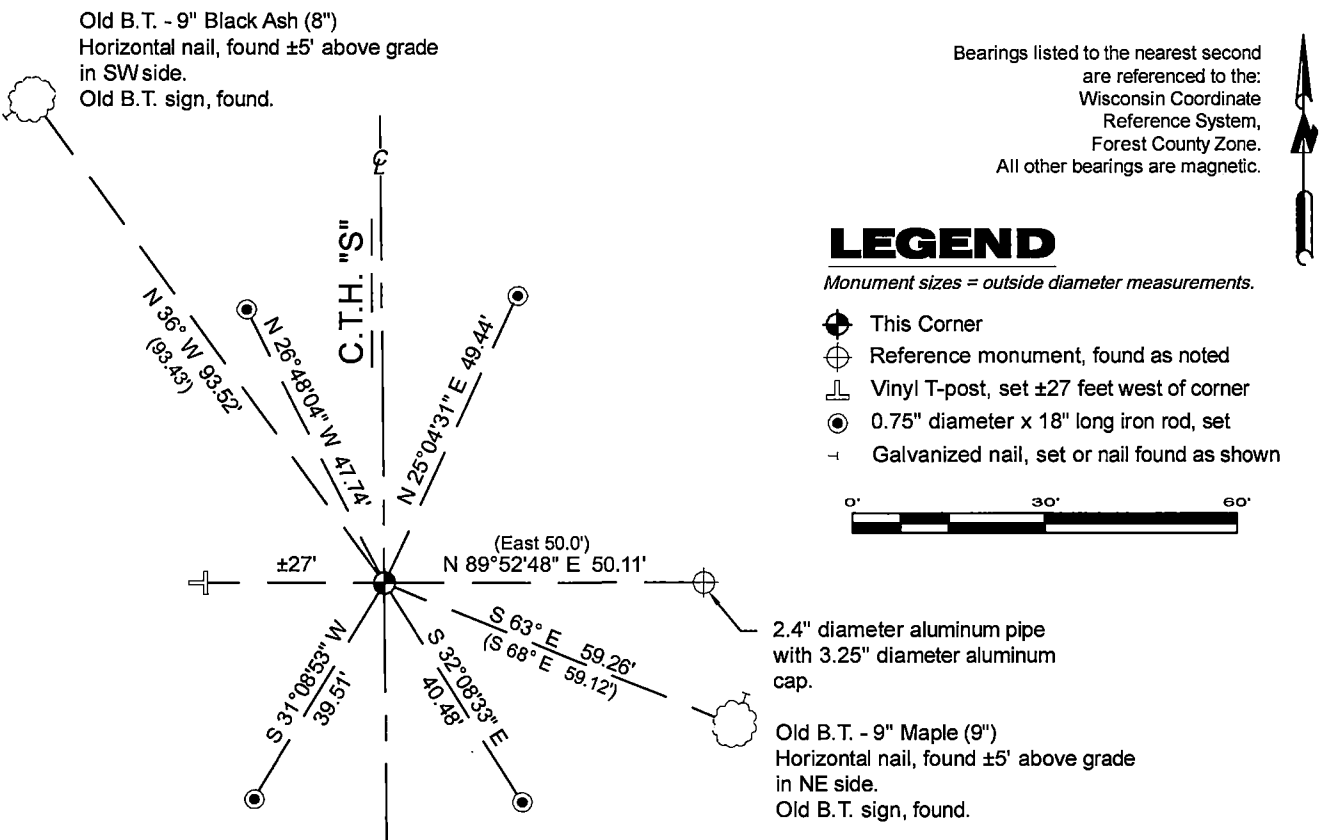
Original Surveyor: William E. Daugherty - August 17, 1859 to August 23, 1859
Hemlock 10 - S 44° W, 12 Links, Hemlock 24 - N 69° E, 11 Links

See previous U.S. Public Land Survey Monument Record - R-21 - October 1, 1999 - Surveyor 1634 - Gary Lee Pisoni - THENCE:

- September 11, 2001 - Surveyor 2566 - David A. Konopacky - indicates this position as "MAG nail set" on county record Map #371224-20010911.
- September 5, 2006 - Surveyor 1910 - Matthew E. Hoglund - indicates this position as "P.K. Nail" on county record Map #371224-20060905.

February 21, 2025 - I found a standard size MAG nail on the centerline of County Trunk Highway "S". I also found 2 of Pisoni's bearing trees alive and in good condition, and Cochrane's reference monument and steel sign post. I established 4 new reference monuments as shown below.

A-E 7.08(3)(c)(d) Plan view of corner with references to at least 4 witness monuments.



A-E 7.08(3)(e) 1859 Surveyor set a post, 1977 Surveyor set a 1" inside diameter galvanized pipe, 1999 Surveyor found a P.K. nail, 2001 Surveyor set a MAG nail, 2006 Surveyor found a P.K. nail. I found a standard size MAG nail in 2025.

A-E 7.08(3)(f) I accept this monument in good faith as a FOUND PERPETUATED LOCATION of the corner
A-E 7.08(3)(g)(h) This corner was not determined through lost-corner-proportionate methods.

A-E 7.08(3)(i) I, Jeffrey L. DeMuth, Professional Land Surveyor No. S-2656, hereby certify that the corner location on this record was determined by me or under my direction and control, and that this U.S. Public Land Survey Monument Record is correct and complete to the best of my knowledge, and belief.

SIGNATURE

July 29, 2025

DATE



43712230000

43712230000

Rd1

CERTIFIED LAND CORNER RESTORATION

Index No. **K21**

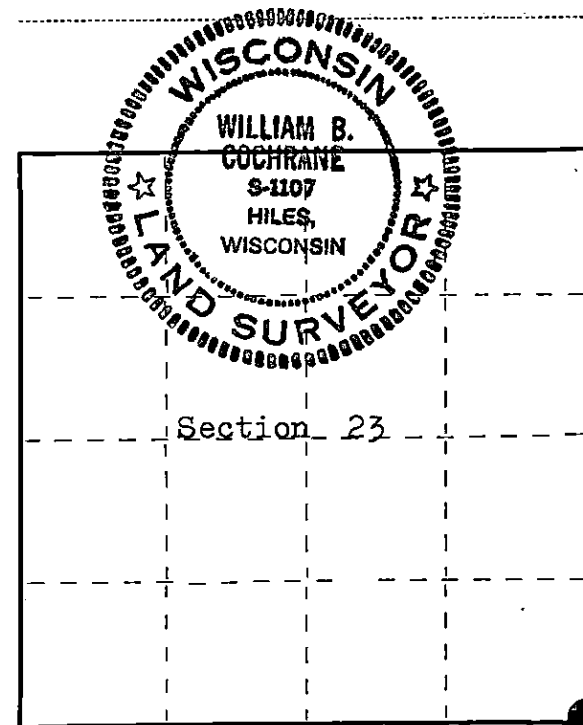
State of Wisconsin }
County of Forest } ss.

I William B. Cochrane, do hereby
certify that on the 31 st. day
of July, 1977, I found
evidence of the Southeast Section
corner of Section 23
Township 37 North, North, Range
12 East, Fourth Principal Meridian,
as described hereon; and that from this evidence
I established a new monument and accessories
as described hereon to perpetuate the original
location of this corner.

Resident witnesses:

Miles H. Cochrane

Brian James



○ = Corner monument restored.

History of original corner establishment:

Surveyed in 1859 by Wm. E. Daugherty
North between Sections 25 and 26.
80.00 chs. Set Post Corner to Sections 23, 24, 25, and 26.
Hemlock, 10", S 44° W, 12 lks.
Hemlock, 24", N 69° E, 11 lks.

Description of corner evidence found:

No corner evidence was recovered. Fence line East. New road construction would have destroyed any corner evidence. After talking to adjacent property owners, a position 50.0 feet West of the fence corner, which falls in the center line of County Highway S, is accepted as being the corner position. This position was also verified by measurements when subdividing Section 23.

Description of monument and accessories I established to perpetuate the original location of this corner.

At the corner position, I set a 1 inch inside diameter, galvanized pipe, 30 inches long, 4 inches below the road surface. From the iron pipe, I set 2½" Berntsen, A-1 Federal Monument, East, 50.00 feet, with cap stamped:

T37N R12E, S23, S24, S25, S26, 1977, S-1107, REFERENCE CORNER 50FT
From the iron pipe: W. Spruce, 12", bears S 50° E, 80.80 feet

Dated at Hiles, Wis., this 23 rd. day of August, 1977.

Signature William B. Cochrane Title Land Surveyor Registration No. S-1107
(County Surveyor, Registered Land Surveyor, or other duly authorized official)

Office of Register of Deeds, County of FOREST, I hereby certify that the within
instrument was filed in this office for record on the 24th day of AUGUST, 1977
at 10:20 o'clock A. M.

Eugene Stutzman
(Register of Deeds)

By _____ Deputy

DOCUMENT NUMBER 112190

FORM 985 H. G. MILLER CO., MILWAUKEE

43712230000

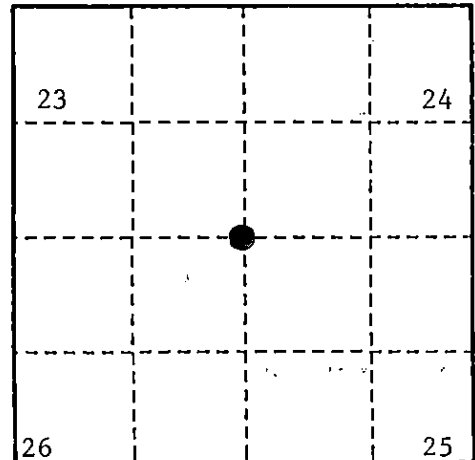
U. S. PUBLIC LAND SURVEY MONUMENT RECORD

INSTRUCTIONS:

This record shall show the location of the corner and shall include all of the following nine elements (a through i).

- (a) Identify the corner by reference to the U.S. public land survey system.
 ○ - Corner monument restored.

Section Corner to Sections 23, 24, 25, 26
 T37N, R12E, Forest County, Wisconsin



- (b) Describe any record evidence, monument evidence, occupational evidence, testimonial evidence or any other material evidence you considered, and whether the monument was found or placed.

Original Government Survey in 1859 by William E. Daugherty.

In 1977, William B. Cochrane, a Land Surveyor with the U.S. Forest Service, restored the corner position by using a fence line which runs East and the centerline of County Hwy. S which runs North and South. At this intersection, he set a 1" diameter galvanized iron pipe 30" long and 4" below road bed surface. From the iron pipe, he set a 2 1/4" diameter by 30" long aluminum pipe monument, 50' East and stamped as follows: T37N, R12E, S23, S24, S25, S26, 1977, S-1107, REFERENCE CORNER, 50.0 feet West from which the following bear:

White Spruce	12"	S 50°E	80.80 feet
Reference Monument		East	50.0 feet
Steel sign post (from Ref.Mon.)		S 26°E	1.1 feet

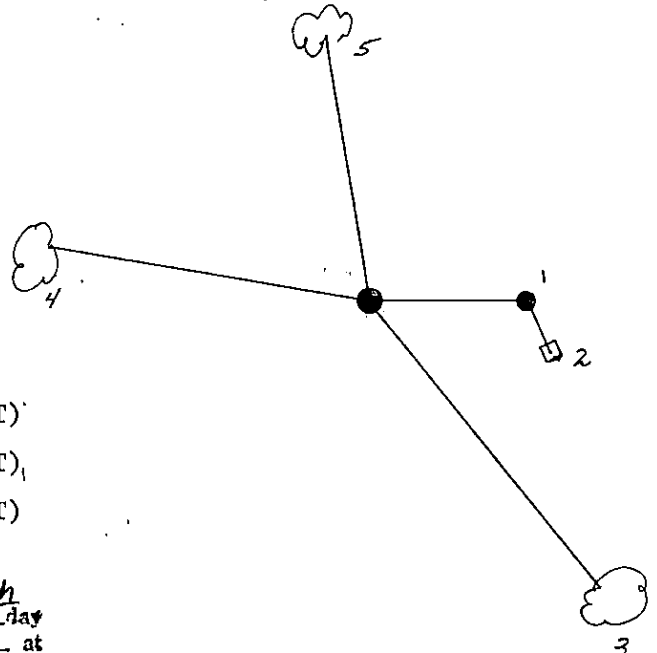
On 9/25/99, Gary L. Pisoni, RLS, found PK nail in centerline of County Hwy. S and assessories as described below.

See previous Land Corner Certificate dated August 24, 1977, Document Number 112190

- (c) In the plan view drawing below, provide reference ties to at least 4 witness monuments, or, if the location is within a municipality, to at least 2 witness monuments. (witness monuments shall be made of concrete, natural stone, iron or other equally durable material.)

- (d) Show a plan view drawing depicting the relevant monuments and reference ties which is sufficient in detail to enable accurate relocation of the corner monument if the corner monument is disturbed. Indicate north.

- Reference Monument, East, 50.0 feet
- Steel sign post (from ref.mon.)
S 26°E, 1.1 feet
- Red Maple, 9", S 68°E, 59.12 feet (NBT)
- Red Maple, 8", N 78°W, 56.03 feet (NBT)
- Black Ash, 8", N 36°W, 93.52 feet (NBT)



REGISTER'S OFFICE
 Forest County, Wis.

Received for record this 27th day
 of October A.D., 1999 at
10:05 o'clock A.M. and recorded
 in Vol Corner Restoration
 page R-21.

Kay Swanson, Deputy
 Register of Deeds

R-21

43712230000

- (e) Describe any material discrepancy between the location of the corner as restored or reestablished and the location of that corner as previously restored or reestablished by distance and direction. Show the discrepancy on the plan view drawing under (d), above. Show the distances between the corner as previously restored or reestablished and (1) the corner as restored or reestablished, and (2) to at least 2 of the witness monuments shown on the drawing in (d), above.

None

- (f) Was the corner restored through acceptance of (1) an obliterated evidence location, or, (2) a found perpetuated location?

Restored from accepted evidence.

- (g & h) Was the corner reestablished through lost corner proportionate methods? If so, show the method, including the directions and distances to other public land survey corners used as evidence or used for proportioning in determining the corner location?

Gary L. Pisoni

- (1) I, _____
(type or print name) certify that the corner location shown on this record was determined by me or under my direction and control and that this U.S. Public Land Survey Monument Record is correct and complete to the best of my knowledge and belief.

Signature

Date

CERTIFICATE READY FOR FILING:

District Ranger

