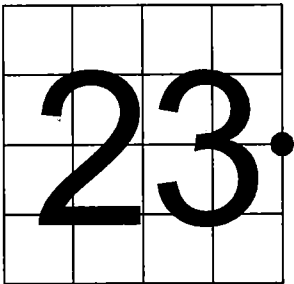


U. S. PUBLIC LAND SURVEY MONUMENT RECORD

NOTE: This form is intended and designed to fulfill all requirements of Wisconsin Administrative Code, Chapter A-E 7.08 U.S. Public Land Survey Monument Record (3) (a-i)

A-E 7.08(3)(a) Identity of corner:  
East 1/4 Corner Section 23,  
Township 37 North, Range 12 East  
of the Fourth Principal Meridian,  
Town of Hiles, Forest County, Wisconsin

WISCORS - FOREST COUNTY  
N: 608,602.155 USft (XXX,XXX.XXX)  
E: 825,334.166 USft (XXX,XXX.XXX)  
Datum: NAD83 (2011)  
GNSS Method RTN  
GNSS Control WISCORS VRS



The coordinate value shown has been verified by the average of two or more GPS observations at a markedly different time. Coordinates shown in parenthesis are previously published values.

A-E 7.08(3)(b)

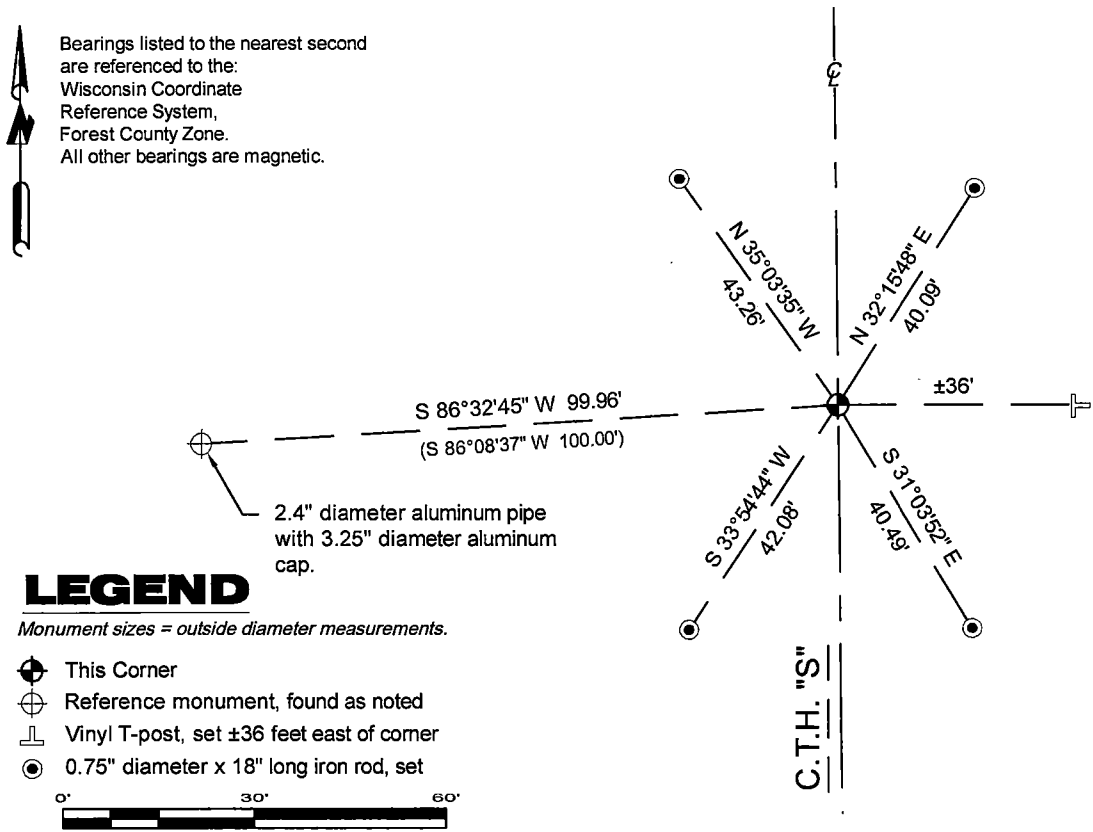
Original Surveyor: William E. Daugherty - August 17, 1859 to August 23, 1859  
Hemlock 6 - N 40° E, 71 Links, Hemlock 6 - S 10° W, 83 Links

See previous Certified Land Corner Restoration - P21 - August 23, 1977 - Surveyor 1107 - William B. Cochrane - THENCE:

- October 1, 1999 - Surveyor 1731 - Kip W. Soder - indicates this position as "1" dia. iron pipe" on county record Map #371223-19991001.
- September 11, 2001 - Surveyor 2566 - David A. Konopacky - indicates this position as "MAG nail set" on county record Map #371224-20010911.
- December 18, 2001 - Surveyor 1731 - Kip W. Soder - indicates this position as "P.K. nail in pavement" on county record Map #371223-20011218.

February 21, 2025 - I found a standard size Mag nail ±0.5' east of the centerline of County Trunk Highway "S". I also found Cochrane's reference monument. I established 4 new reference monuments as shown below.

A-E 7.08(3)(c)(d) Plan view of corner with references to at least 4 witness monuments.



A-E 7.08(3)(e) 1859 Surveyor set a post, 1977 Surveyor set a 1" inside diameter galvanized pipe, 1999 Surveyor found a 1" dia. iron pipe, 2001 Surveyor set a MAG nail, 2001 Surveyor found a P.K. nail. I found a standard size MAG nail in 2025.

A-E 7.08(3)(f) I accept this monument in good faith as a FOUND PERPETUATED LOCATION of the corner.  
A-E 7.08(3)(g)(h) This corner was previously determined through lost-corner-proportionate methods.

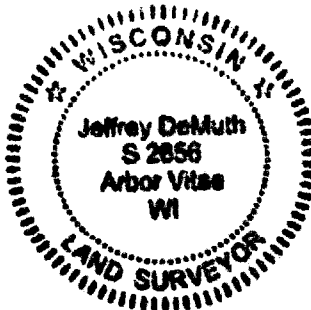
A-E 7.08(3)(i) I, Jeffrey L. DeMuth, Professional Land Surveyor No. S-2656, hereby certify that the corner location on this record was determined by me or under my direction and control, and that this U.S. Public Land Survey Monument Record is correct and complete to the best of my knowledge, and belief.

SIGNATURE

*Jeffrey L. DeMuth*

July 29, 2025

DATE



43712232000

43712232000

P21

CERTIFIED LAND CORNER RESTORATION

Index No. **P21**

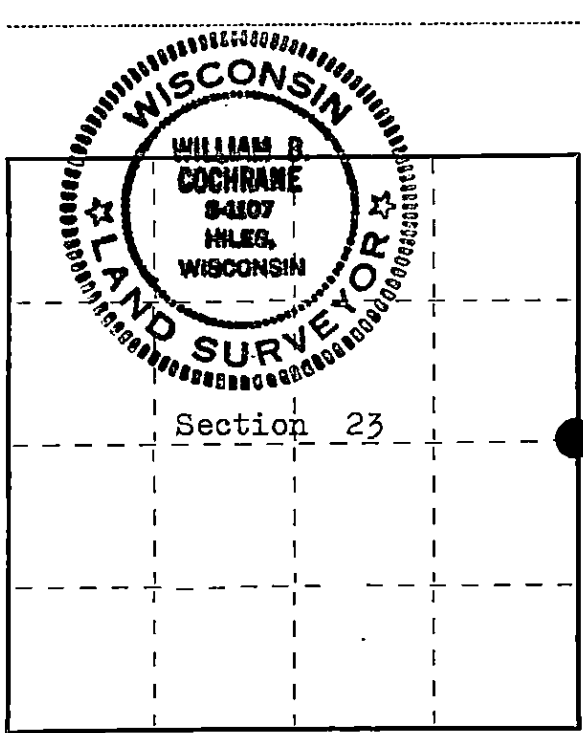
State of Wisconsin }  
County of Forest } ss.

I William B. Cochrane, do hereby  
certify that on the 31 st day  
of July, 19 77, I found  
evidence of the East Quarter  
corner of Section 23  
Township 37 North, North, Range  
12 East, Fourth Principal Meridian,  
as described hereon; and that from this evidence  
I established a new monument and accessories  
as described hereon to perpetuate the original  
location of this corner.

Resident witnesses:

Miles H. Cochrane

Brian James



○ = Corner monument restored.

History of original corner establishment:

Surveyed in 1859 by Wm. E. Daugherty  
North between Sections 23 and 24  
40.00 chs. Set Quarter Section Post  
Hemlock, 6", N 40° E, 71 lks  
Hemlock, 6", S 10° W, 83 lks

Description of corner evidence found:

No evidence of the corner was found. New road construction  
would have destroyed and corner evidence. Using the road  
center line for control in longitude, I set the corner  
at the midpoint between the Section Corners. This agrees  
with the original location of the road before construction.

Description of monument and accessories I established to perpetuate the original location of this corner.  
At the corner position, I set a 1" inside diameter, galvanized  
pipe, 30 inches long, 4 inches below the road surface. I set  
a 2½" Berntsen, A-1 Federal monument S 86° 08' 37" W, 100.00 feet,  
with cap stamped:

T37N R12E, ¼, S23, S24, 1977, S-1107, REFERENCE CORNER 100FT  
From the iron pipe: A Maple, 12", Bears S 53° E, 76.00 feet  
N 00° 53' 07" W, 2675.02 to the Northeast Section Corner of  
Section 23  
S 00° 41' 24" E, 2675.02 to the Southeast Section Corner of  
Section 23

Dated at Hiles, Wis., this 23 rd day of August, 19 77.

Signature William B. Cochrane Title Land Surveyor Registration No. S-1107  
(County Surveyor, Registered Land Surveyor, or other duly authorized official)

Office of Register of Deeds, County of FOREST, I hereby certify that the within  
instrument was filed in this office for record on the 24th day of AUGUST, 19 77  
at 10:20 o'clock A. M.

Eugene Staszny  
(Register of Deeds)  
By \_\_\_\_\_ Deputy

DOCUMENT NUMBER --- **112188**

FORM 985 H. C. MILLER CO., MILWAUKEE

A3712232000