

U.S. PUBLIC LAND SURVEY
MONUMENT RECORD

NOTE: This form is intended and designed to fulfill all requirements of Wisconsin Administrative Code, Chapter A-E 7.08 U.S. Public Land Survey Monument Record (3) (a-l)

A-E 7.08(3)(a) Identity of corner:
Southeast Corner Section 24,
Township 37 North, Range 12 East
of the Fourth Principal Meridian,
Town of Hiles, Forest County, Wisconsin

WISCRS - FOREST COUNTY
N: 605,651.154 USft (XXX,XXX.XXX)
E: 830,765.069 USft (XXX,XXX.XXX)
Datum: NAD83 (2011)
GNSS Method RTK
GNSS Control WISCRS VRS



The coordinate value shown has been verified by the average of two or more GPS observations at a markedly different time. Coordinates shown in parenthesis are previously published values.

A-E 7.08(3)(b)

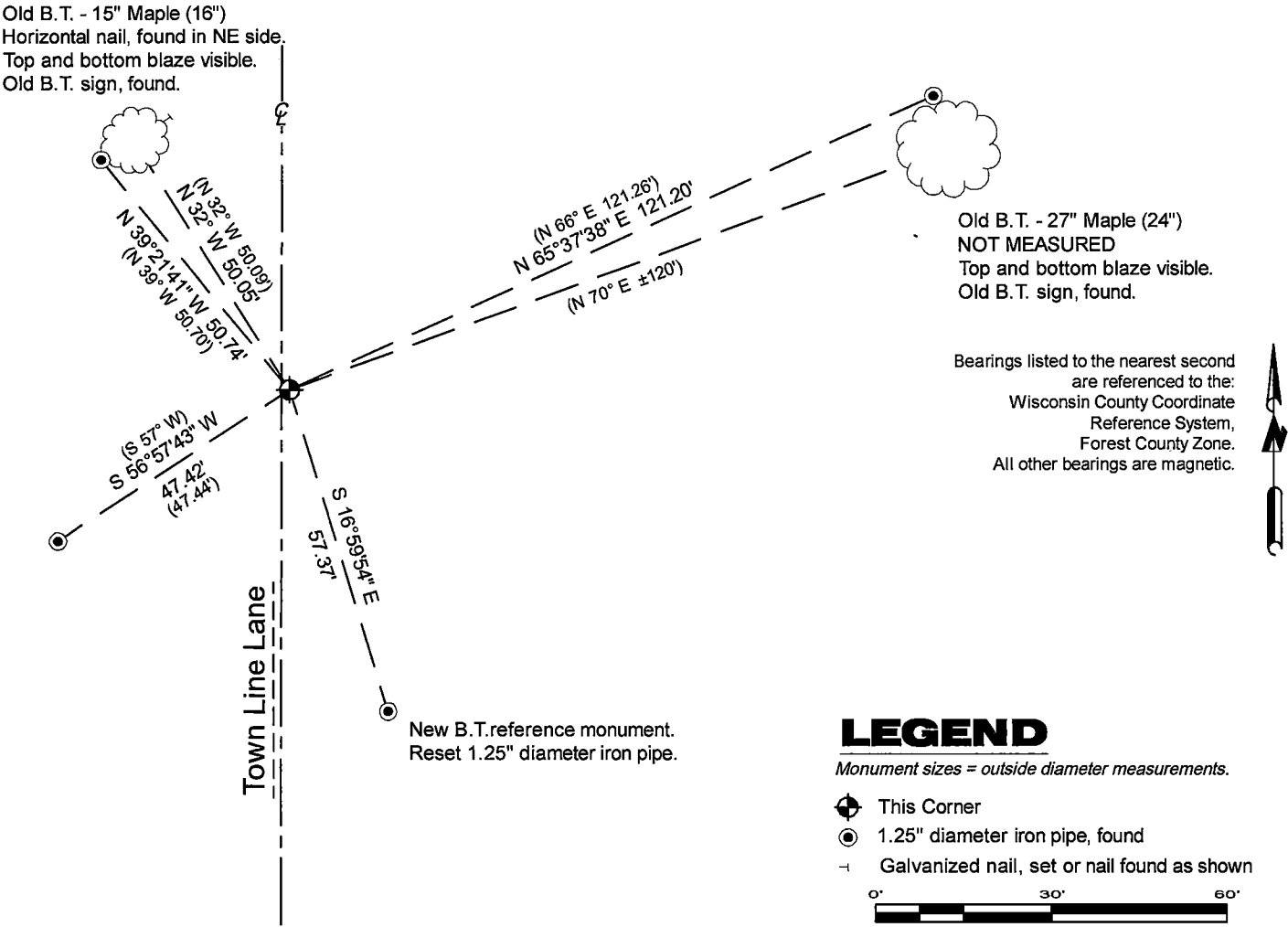
Original Surveyor: Alfred Millard - May 1858 to June 1858
Sugar 14 - N 20° W, 26 Links, Lynn 14 - N 54° E, 43 Links, Lynn - S 53° E, 43 Links, Hemlock 26 - S 26° W, 56 Links

See previous U.S. Public Land Survey Monument Record - R-25 - May 15, 2008 - Surveyor 1641 - James H. Moore - THENCE:

- December 20, 2012 - Surveyor 2671 - Timothy J. Rusch - indicates this position as "found PK nail" on county record Map #371224-20121220.
- April 27, 2022 - Surveyor 1763 - Thomas A. Boettcher - indicates this position as "magnetic PK nail set in pavement" on county record Map #371330-20220427.

July 16, 2024 - I found a Mag nail ±1.5 feet east of the centerline of Town Line Lane. I also found 5 of Moore's reference monuments in good condition, and 1 lying down which I reset. I established 1 new reference monuments as shown below.

A-E 7.08(3)(c)(d) Plan view of corner with references to at least 4 witness monuments.



A-E 7.08(3)(e) 1858 Surveyor set a post, 2008 Surveyor found a Mag nail, 2012 Surveyor found a PK nail, 2022 Surveyor set a PK nail. I found Mag nail in 2024.

A-E 7.08(3)(f) I accept this monument in good faith as a FOUND PERPETUATED LOCATION of the corner.

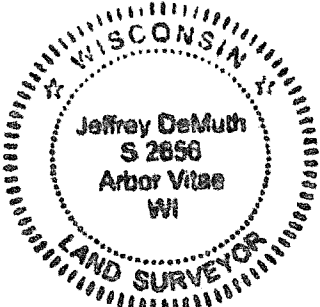
A-E 7.08(3)(g)(h) This corner was not determined through lost-corner-proportionate methods.

A-E 7.08(3)(i) I, Jeffrey L. DeMuth, Professional Land Surveyor No. S-2656, hereby certify that the corner location on this record was determined by me or under my direction and control, and that this U.S. Public Land Survey Monument Record is correct and complete to the best of my knowledge, and belief.

SIGNATURE

March 31, 2025

DATE



43712240000

43712240000

R25

Document Number
197419

REGISTER'S OFFICE
Forest County, Wis.
Received for record this 15th day
of May A.D., 2008 at
11:50 o'clock A.M. and recorded
in Vol. Corner Restoration
page R-25
Kay Swanson, Deputy
Register of Deeds

U.S. PUBLIC LAND SURVEY MONUMENT RECORD

(AS REQUIRED BY S. A-E 7.08, WI ADM. CODE)

HISTORY OF ORIGINAL CORNER ESTABLISHMENT AND SUBSEQUENT RESTORATIONS AND DESCRIPTION OF ANY RECORD, MONUMENT, OCCUPATIONAL, TESTIMONIAL, OR OTHER EVIDENCE CONSIDERED:

1858 - ALFRED MILLARD, SURVEYOR, SET POST.

SET THE FOLLOWING WITNESSES:

LYNN 14" N54°E 43 LINKS
LYNN 14" S53°E 43 LINKS
SUGAR MAPLE 14" N20°W 28 LINKS
HEMLOCK 28" S26°W 56 LINKS

1987 - JOHN SCHULKE, SURVEYOR, S-1665, SET A 2-1/2" ALUMINUM PIPE w/ AN ALUMINUM STAMPED CAP.

SET THE FOLLOWING WITNESSES:

STEEL SIGN POST S61°W 23.6 FEET
STOP SIGN S29°E 42.1 FEET
SUGAR MAPLE 24" N84°E 121.10 FEET
SUGAR MAPLE 16" N31°W 50.02 FEET
WHITE BIRCH 3" S77°E 36.70 FEET

1998 - PLAT OF RIGHT OF WAY, WISDOT PROJECT NO. 9261-03-23, SHOWS A 1" IRON PIPE AT THE INTERSECTION OF TOWERLINE RD. AND HWY 32.

1999 - GARY L. PISONI, SURVEYOR, S-1634, FOUND A 2-1/2" ALUMINUM MONUMENT BENT OVER DUE TO ROAD GRADING. RESET A NEW ALUMINUM PIPE MONUMENT WITH ALUMINUM CAP STAMPED TO IDENTIFY THE CORNER. BURIED MONUMENT 6" BELOW ROAD BED SURFACE.

SET THE FOLLOWING WITNESSES:

SUGAR MAPLE 24" N84°E 121.10 FEET
SUGAR MAPLE 16" N31°W 50.02 FEET
WHITE BIRCH 3" S77°E 36.70 FEET
STOP SIGN S29°E 42.11 FEET
STEEL SIGN POST S61°W 23.6 FEET

2008 - JAMES H. MOORE, SURVEYOR, S-1641, FOUND A 2-1/2" ALUMINUM MONUMENT 0.8' BELOW GRADE. U.S. PUBLIC LAND SURVEY MONUMENT RECORD, DOCUMENT NO. 189922.

FOUND THE FOLLOWING WITNESSES:

MAPLE 24" N70°E 120.21 FEET
STOP SIGN S28°E 42.15 FEET
BENT STEEL SIGN POST S65°W 23.74 FEET
WHITE BIRCH 5" S74°W 36.58 FEET
MAPLE 16" N29°W 49.33 FEET

SET THE FOLLOWING WITNESSES:

1" IRON PIPE w/ CEC CONTROL CAP N67°E 121.22 FEET - SET PIPE 4' NORTH OF BEARING TREE.
1" IRON PIPE w/ CEC CONTROL CAP S19°E 67.88 FEET
1" IRON PIPE w/ CEC CONTROL CAP S59°W 47.46 FEET
1" IRON PIPE w/ CEC CONTROL CAP N38°W 50.67 FEET - SET PIPE 3' SE OF 16" ASH AND 5' SW OF BEARING TREE.

DISTANCE IS TO FACE ON ALL EXISTING BEARING TREES.

CORNER WAS: (CHECK ALL THAT APPLY)

☐ RESTORED THROUGH ACCEPTANCE OF AN OBLITERATED LOCATION

☒ RESTORED THROUGH ACCEPTANCE OF A FOUND PERPETUATED LOCATION

☐ CONSIDERED A LOST CORNER AND REESTABLISHED THROUGH LOST CORNER PROPORTIONATE METHODS (INCLUDING A PLAN VIEW DRAWING SHOWING DISTANCES AND DIRECTIONS TO OTHER PUBLIC LAND SURVEY CORNERS USED FOR PROPORTIONING AND DETERMINING THE CORNER LOCATION)

☐ RESTORED OF REESTABLISHED IN A LOCATION THAT DIFFERS FROM A PREVIOUS RESTORATION OF REESTABLISHMENT (INCLUDE A PLAN VIEW DRAWING AND INDICATE WHAT WAS SET AND/OR FOUND)

DESCRIBE THE MONUMENT AND ACCESSORIES USED TO PERPETUATE THE LOCATION OF THIS CORNER. (INCLUDE A PLAN VIEW DRAWING AND INDICATE WHAT WAS SET AND/OR FOUND)

CORNER WAS REMOVED DURING CONSTRUCTION. FOUND MAG NAIL AT THE INTERSECTION OF TOWNLINE RD. AND CTH "N".

FOUND THE FOLLOWING WITNESSES:

MAPLE 24" N70°E 120.21 FEET TO THE FACE
MAPLE 16" N32°W 50.09 FEET - DISTANCE IS TO FND. NAIL IN NE SIDE OF TREE.
1" IRON PIPE w/ CEC CONTROL CAP N68°E 121.26 FEET - FND. PIPE 4' NORTH OF BEARING TREE.
1" IRON PIPE w/ CEC CONTROL CAP S20°E 67.88 FEET
1" IRON PIPE w/ CEC CONTROL CAP S57°W 47.44 FEET
1" IRON PIPE w/ CEC CONTROL CAP N39°W 50.70 FEET

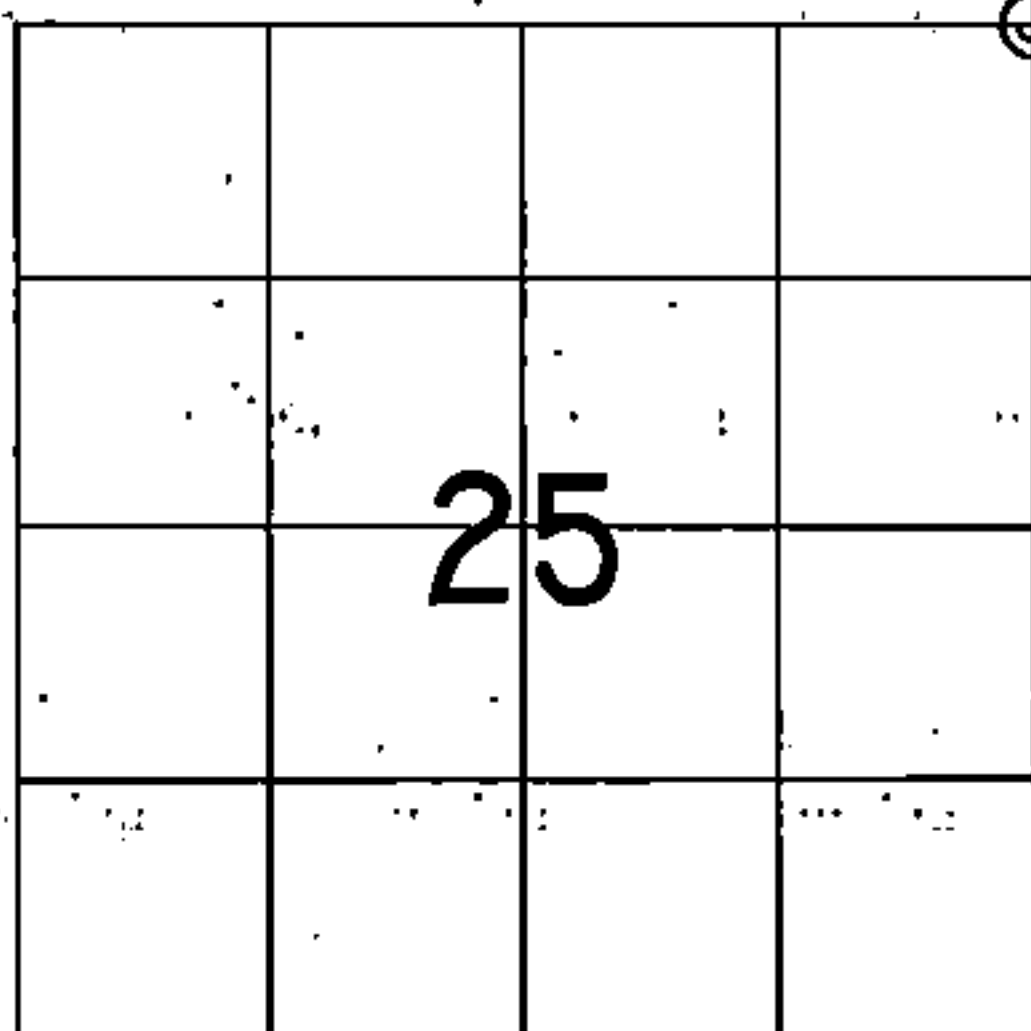
ALL BEARING TREES HAVE EXISTING CHEST AND STUMP BLAZES AND WERE REFRESHED WITH RED PAINT.

THE NORTHEAST

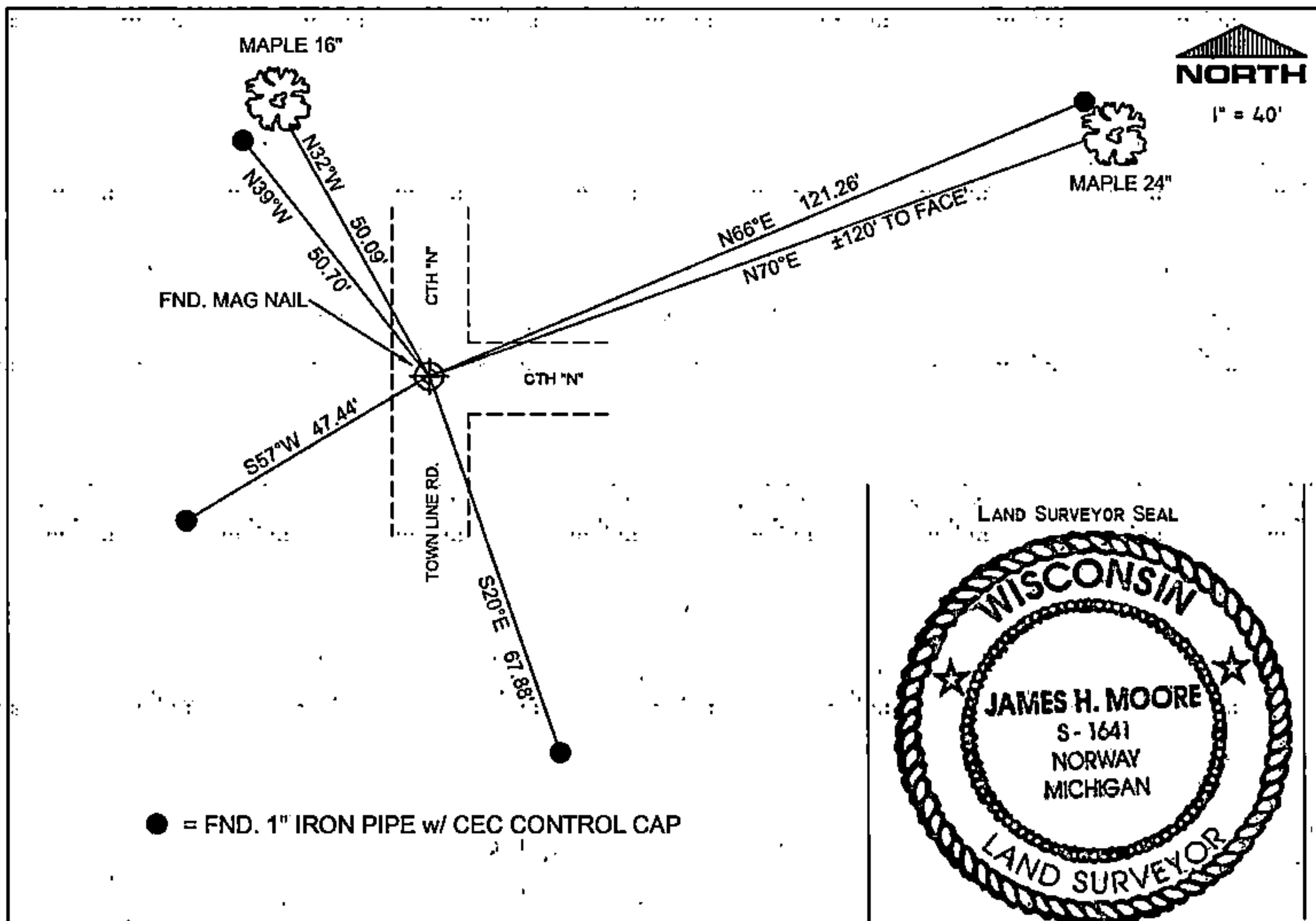
CORNER OF SECTION 25

T. 37 N., R. 12 E.,

FOREST COUNTY, WISCONSIN



⊕ = LOCATION OF CORNER



I, JAMES H. MOORE PS S-1641

(TYPE OR PRINT NAME) CERTIFY THAT THE CORNER LOCATION SHOWN ON THIS ABOVE RECORD WAS DETERMINED BY ME OR UNDER MY DIRECTION AND CONTROL AND THAT THIS U.S. PUBLIC LAND SURVEY MONUMENT RECORD IS CORRECT AND COMPLETE TO THE BEST OF MY KNOWLEDGE AND BELIEF.

INDEX No. R-25

SIGNATURE

James H. Moore

DATE 5-15-08

43712240000

R-25

Document Number

189922

REGISTER'S OFFICE
Forest County, Wis.
Received for record this 18th day
of January A.D., 2006 at
9:00'clock A.M. and recorded
in Vol. Corner Restoration
page B-25
Kay Swanson, Deputy
Register of Deeds

U.S. PUBLIC LAND SURVEY MONUMENT RECORD

(As Required By S. A-E 5.02, WI ADM. CODE)

HISTORY OF ORIGINAL CORNER ESTABLISHMENT AND SUBSEQUENT RESTORATIONS AND DESCRIPTION OF ANY RECORD, MONUMENT, OCCUPATIONAL, TESTIMONIAL, OR OTHER EVIDENCE CONSIDERED:

1858 - ALFRED MILLARD, SURVEYOR, SET POST

SET THE FOLLOWING WITNESSES:
LYNN 14" N54°W 43 LINKS
LYNN 14" S53°E 43 LINKS
SUGAR MAPLE 14" N20°W 26 LINKS
HEMLOCK 26" S26°W 56 LINKS

1988 - JOHN SCHULKE, SURVEYOR, S-1665, SET A 2-1/2" ALUMINUM PIPE w/ AN ALUMINUM CAP.

SET THE FOLLOWING WITNESSES:
STEEL SIGN POST S61°W 23.6 FEET
STOP SIGN S29°E 42.1 FEET
SUGAR MAPLE 24" N64°E 121.10 FEET
SUGAR MAPLE 16" N31°W 50.02 FEET
WHITE BIRCH 3" S77°E 36.70 FEET

1998 - PLAT OF RIGHT OF WAY, WISDOT PROJECT NO. 9261-03-23, SHOWS A 1" IRON PIPE AT THE INTERSECTION OF TOWERLINE RD. AND HWY 32.

CORNER WAS: (CHECK ALL THAT APPLY)

- ☐ RESTORED THROUGH ACCEPTANCE OF AN OBLITERATED LOCATION
☒ RESTORED THROUGH ACCEPTANCE OF A FOUND PERPETUATED LOCATION
☐ CONSIDERED A LOST CORNER AND REESTABLISHED THROUGH LOST CORNER PROPORTIONATE METHODS (INCLUDING A PLAN VIEW DRAWING SHOWING DISTANCES AND DIRECTIONS TO OTHER PUBLIC LAND SURVEY CORNERS USED FOR PROPORTIONING AND DETERMINING THE CORNER LOCATION)
☐ RESTORED OF REESTABLISHED IN A LOCATION THAT DIFFERS FROM A PREVIOUS RESTORATION OF REESTABLISHMENT (INCLUDE A PLAN VIEW DRAWING AND INDICATE WHAT WAS SET AND/OR FOUND)

DESCRIBE THE MONUMENT AND ACCESSORIES USED TO PERPETUATE THE LOCATION OF THIS CORNER. (INCLUDE A PLAN VIEW DRAWING AND INDICATE WHAT WAS SET AND/OR FOUND)

FOUND A 3-1/2" ALUMINUM MONUMENT 0.8' BELOW GRADE.

FOUND THE FOLLOWING WITNESSES:

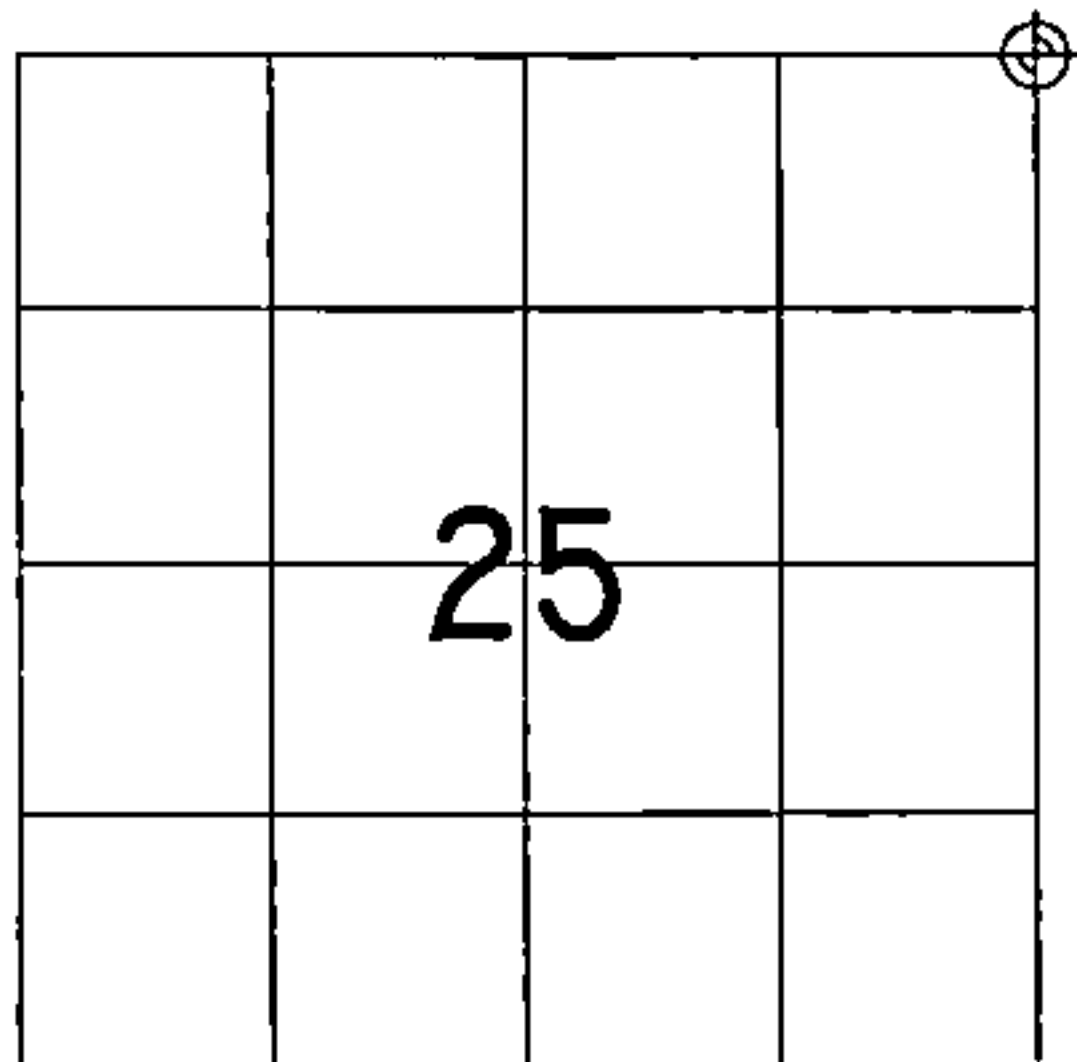
MAPLE 24" N70°E 120.21 FEET
STOP SIGN S28°E 42.15 FEET
BENT STEEL SIGN POST S65°W 23.74 FEET
WHITE BIRCH 5" S74°W 36.56 FEET
MAPLE 16" N29°W 49.33 FEET

SET THE FOLLOWING WITNESSES:

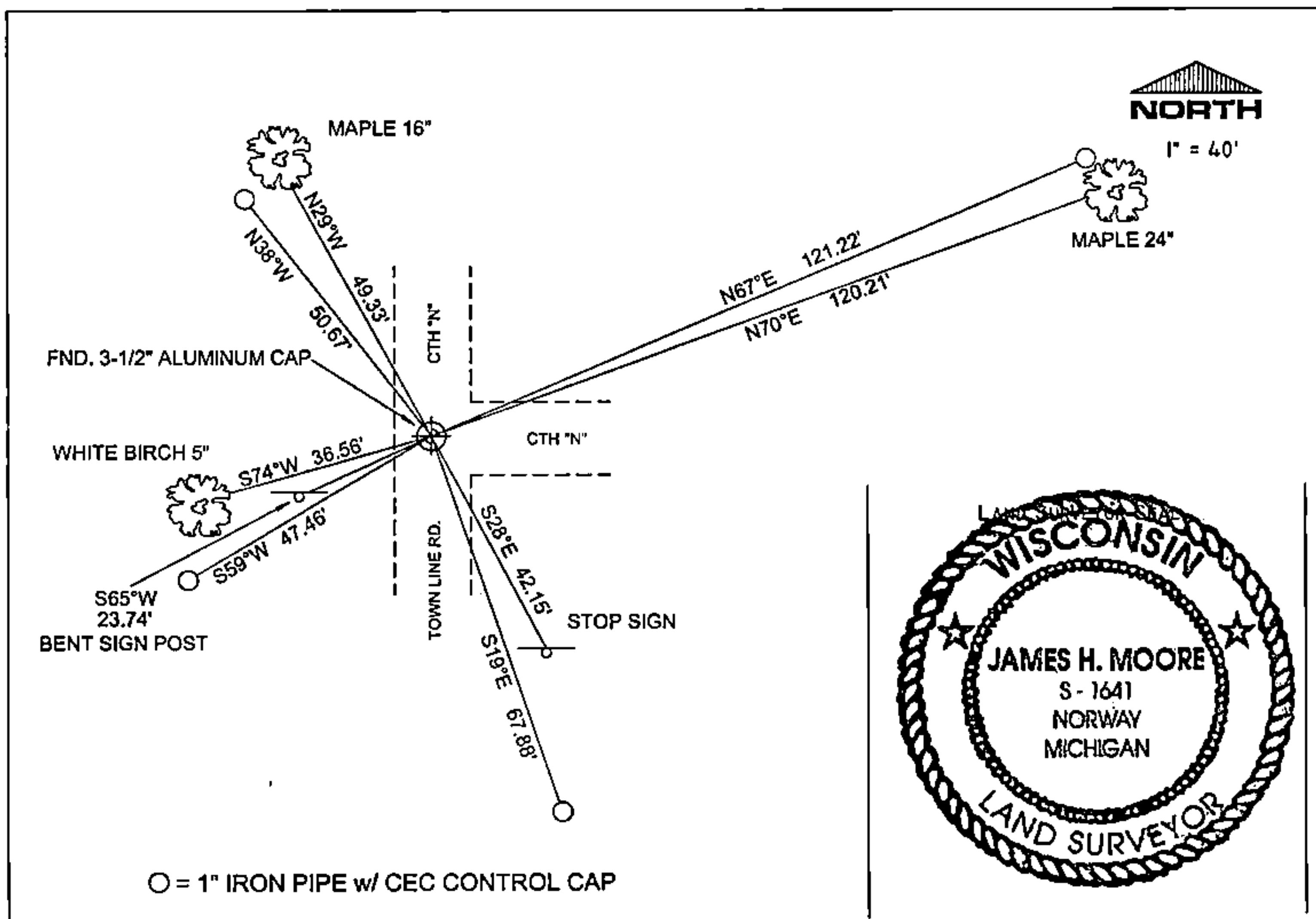
1" IRON PIPE w/ CEC CONTROL CAP N67°E 121.22 FEET - SET PIPE 4' NORTH OF BEARING TREE.
1" IRON PIPE w/ CEC CONTROL CAP S19°E 67.88 FEET
1" IRON PIPE w/ CEC CONTROL CAP S59°W 47.46 FEET
1" IRON PIPE w/ CEC CONTROL CAP N38°W 50.67 FEET - SET PIPE 3' SE OF 16" ASH AND 5' SW OF BEARING TREE.

DISTANCE IS TO FACE ON ALL EXISTING BEARING TREES.

THE NORTHEAST
CORNER OF SECTION 25,
T. 37 N., R. 12 E.,
FOREST COUNTY, WISCONSIN



⊕ = LOCATION OF CORNER



I, JAMES H. MOORE PS S-1641

(TYPE OR PRINT NAME) CERTIFY THAT THE CORNER LOCATION SHOWN ON THIS ABOVE RECORD WAS DETERMINED BY ME OR UNDER MY DIRECTION AND CONTROL AND THAT THIS U.S. PUBLIC LAND SURVEY MONUMENT RECORD IS CORRECT AND COMPLETE TO THE BEST OF MY KNOWLEDGE AND BELIEF.

INDEX No. M-9

SIGNATURE

DATE

1-16-06

43712240000

H-27

U. S. PUBLIC LAND SURVEY MONUMENT RECORD

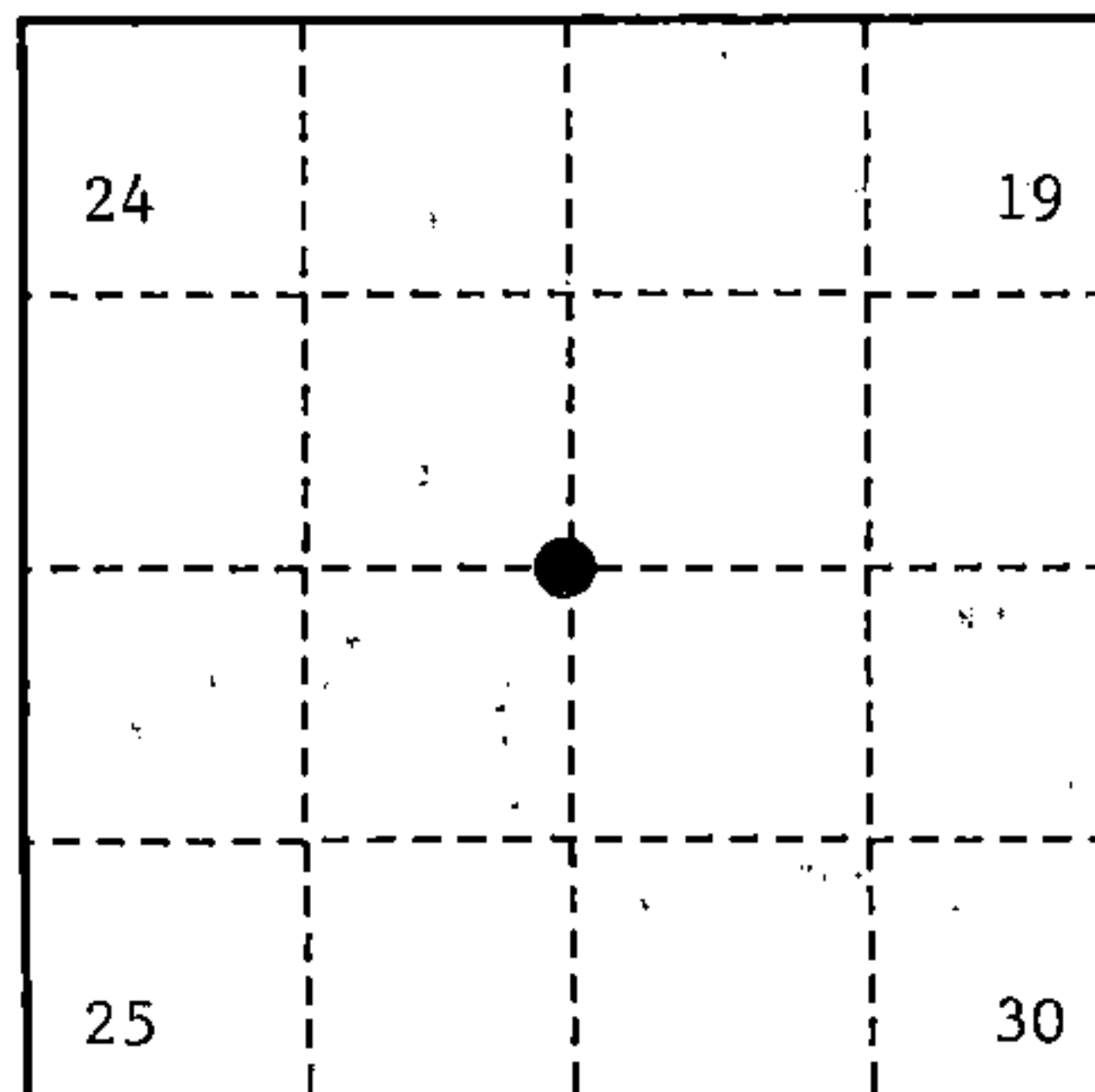
INSTRUCTIONS:

This record shall show the location of the corner, and shall include all of the following nine elements (a through i).

- (a) Identify the corner by reference to the U.S. public land survey system.

○ = Corner monument restored.

Section Corner to Sections 24, 19, 25, 30
T37N, R12-13E, Forest County, Wisconsin



- (b) Describe any record evidence, monument evidence, occupational evidence, testimonial evidence or any other material evidence you considered, and whether the monument was found or placed.

Original Government Survey in 1858 by Alfred Millard.

In 1987, John C. Schulke RLS accepted the road intersection as the best evidence of restoring the original corner location. In the road intersection, he set a 2 1/2" diameter aluminum pipe monument, 30" long, with an aluminum cap stamped as follows: T37N, R12E, R13E, S19, S24, S25, S30, 1987, S-1665 from which the following bear:

Sugar Maple	24"	N 64°E	121.10 feet
Sugar Maple	16"	N 31°W	50.02 feet
White Birch	3"	S 77°E	36.70 feet
Stop sign		S 29°E	42.11 feet
Steel sign post		S 61°W	23.6 feet

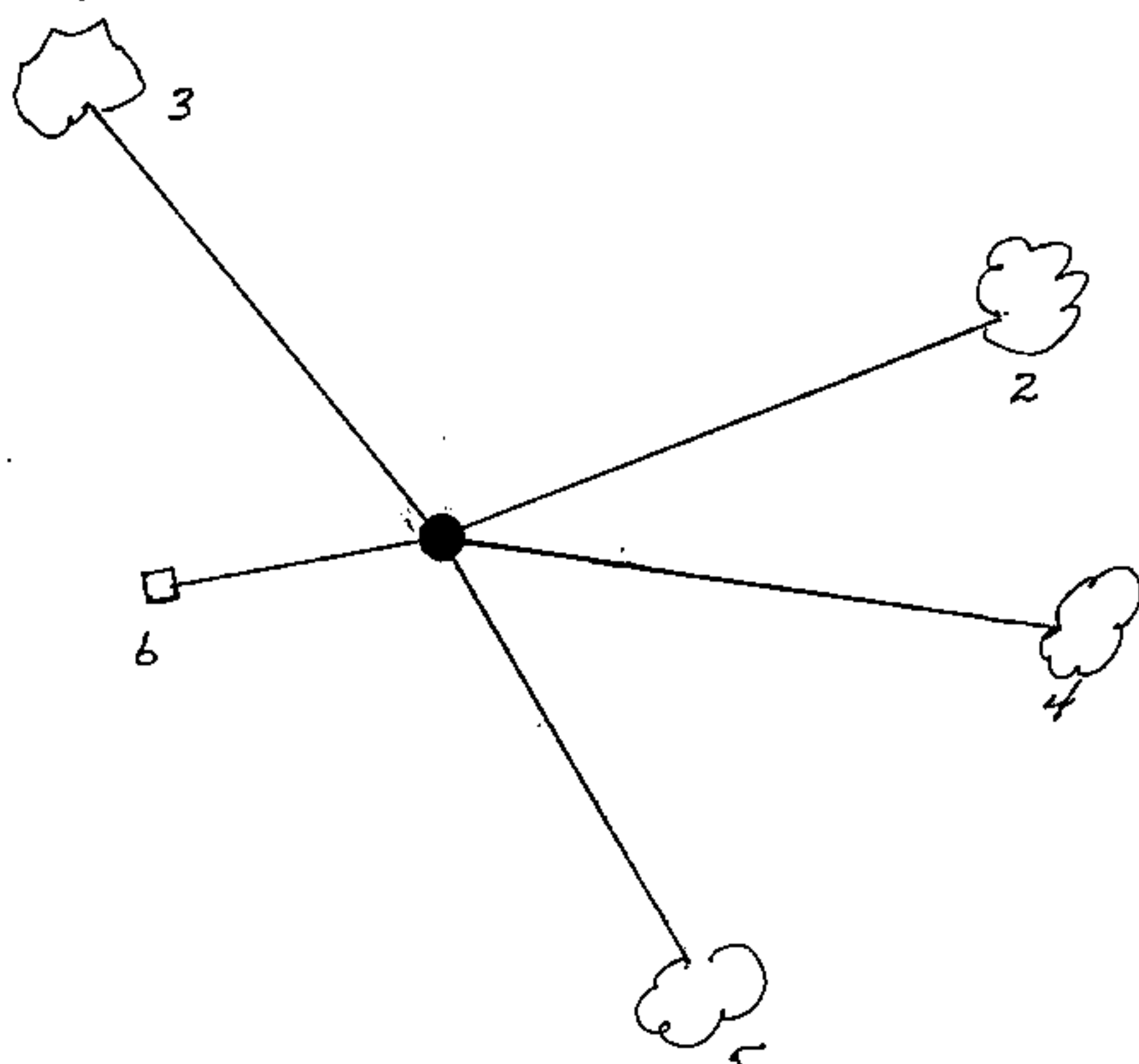
On 9/25/99, Gary L. Pisoni RLS, found above monument bent over due to road grading. Reset a new aluminum pipe monument with aluminum cap stamped to identify corner. Monument buried 8" below road bed surface. Assessories described below.

See previous Land Corner Certificate dated February 2, 1988, Document Number 134572.

- (c) In the plan view drawing below, provide reference ties to at least 4 witness monuments, or, if the location is within a municipality, to at least 2 witness monuments. (witness monuments shall be made of concrete, natural stone, iron or other equally durable material.)

- (d) Show a plan view drawing depicting the relevant monuments and reference ties which is sufficient in detail to enable accurate relocation of the corner monument if the corner monument is disturbed. Indicate north.

- 2"x36" aluminum monument stamped to identify corner
- Sugar Maple, 24", N 64°E, 121.10 feet
- Sugar Maple, 16" N 31°W, 50.02 feet
- White Birch, 3", S 77°E, 36.70 feet
- Stop sign, S 29°E, 42.11 feet
- Steel sign post, S 61°W, 23.6 feet



REGISTER'S OFFICE
Forest County, Wis.
Received for record this 27th day
of October A.D., 1999 at
10:05 o'clock A.M. and recorded
in Vol. Corner Restoration
page R-25

Kay Swanson, Deputy
Register of Deeds

R-25

43712 24 0000

(e) Describe any material discrepancy between the location of the corner as restored or reestablished and the location of that corner as previously restored or reestablished by distance and direction. Show the discrepancy on the plan view drawing under (d), above. Show the distances between the corner as previously restored or reestablished and (1) the corner as restored or reestablished, and (2) to at least 2 of the witness monuments shown on the drawing in (d), above.

None

(f) Was the corner restored through acceptance of (1) an obliterated evidence location, or, (2) a found perpetuated location?

Restored from accepted evidence.

(g & h) Was the corner reestablished through lost corner proportionate methods? If so, show the method, including the directions and distances to other public land survey corners used as evidence or used for proportioning in determining the corner location?

(1) I, Gary L. Pisoni
(type or print name) certify that the corner location shown on this record was determined by me or under my direction and control and that this U.S. Public Land Survey Monument Record is correct and complete to the best of my knowledge and belief.

Signature

CERTIFICATE READY FOR FILING:

10-1-99

Date

District Ranger



U.S. PUBLIC LAND SURVEY MONUMENT RECORD

Index No. R-25

State of Wisconsin }
 County of FOREST } ss.

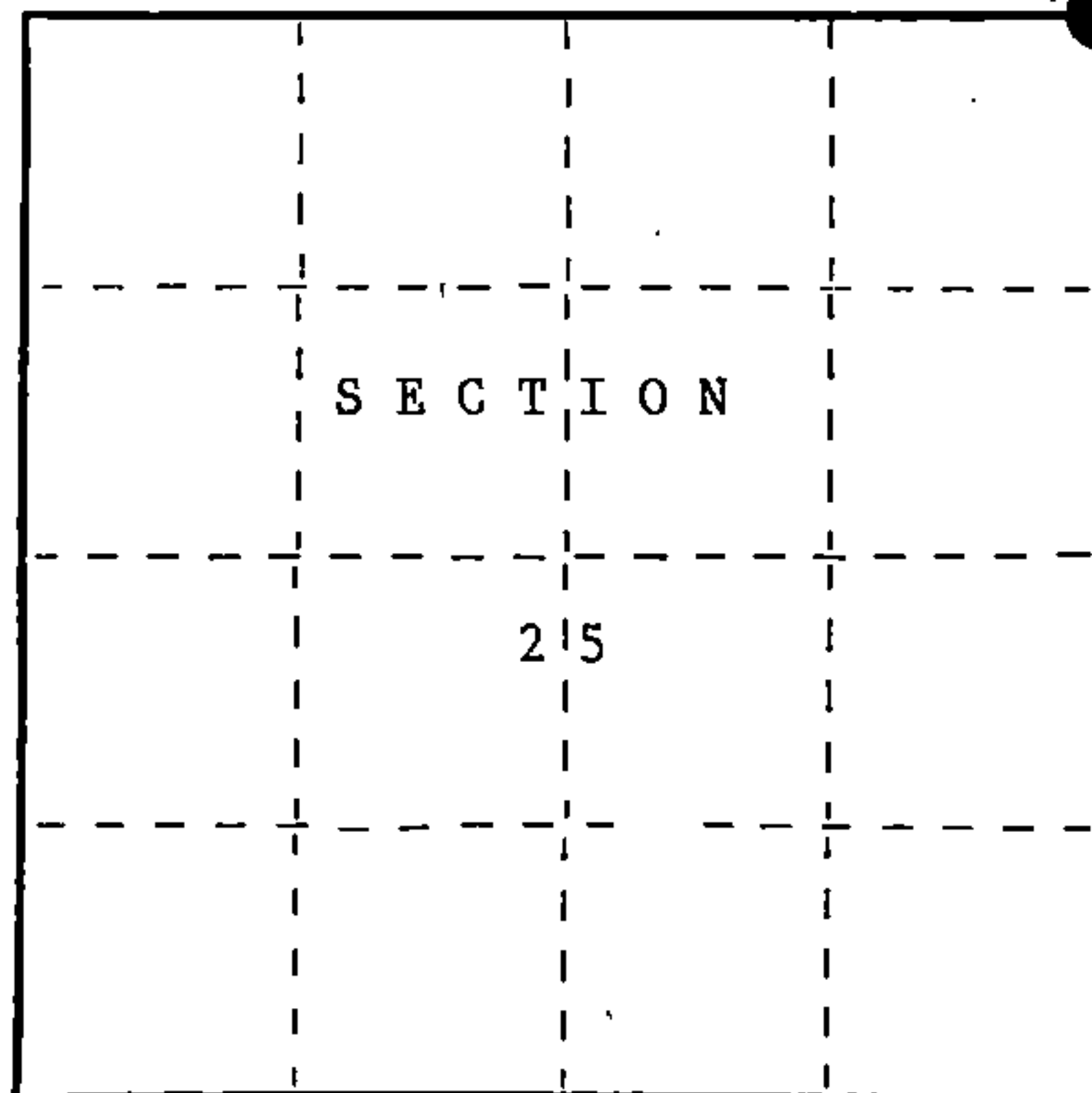
I, John C. Schulke, do hereby
 certify that on the 17th day
 of April, 1987, I found
 evidence of the Northeast Section
 corner of Section 25
Township thirty-seven, North, Range
twelve East, Fourth Principal Meridian,
 as described hereon; and that from this evidence
 I established a new monument and accessories
 as described hereon to perpetuate the original
 location of this corner.

Resident witnesses:

.....

.....

.....



○ = Corner monument restored.

History of original corner establishment:

Original corner established in 1858 by Alfred Millard, U.S. Deputy Surveyor.

Set a wooden post with the following bearing trees:

Sugar Maple	14"	N20°W	26 lks.
Lynn	14"	N54°E	43 lks.
Lynn	14"	S53°E	43 lks.
Hemlock	26"	S26°W	56 lks.

Description of corner evidence found:

Accepted road intersection as the best evidence of
 original corner location. To the West a large pile
 of rocks runs East and West indicating occupation.

Description of monument and accessories I established to perpetuate the original location of this corner.

Set 2 1/2" diameter aluminum pipe monument, 30 inches long, 36 inches in
 the ground with an aluminum cap stamped; T37N, R12E, S19, S24, S25, S30,
 1987, S-1665. Set a steel sign post S61°W a distance of 23.6 feet. A
 stop sign S29°E a distance of 42.1 feet. Established the following
 bearing trees which are blazed, scribed, painted and tagged.

Sugar Maple	24"	N64°E	121.10 feet
Sugar Maple	16"	N31°W	50.02 feet
White Birch	3"	S77°E	36.70 feet

Dated at Hiles, Wis., this Nineteenth day of November, 1987.

Signature John C. Schulke Title Land Surveyor Registration No. S-1665
 (County Surveyor, Registered Land Surveyor, or other duly authorized official)

Office of Register of Deeds, County of Forest, I hereby certify that the within
 instrument was filed in this office for record on the 2nd day of February, 1988
 at 9:40 o'clock A. M.

Paul Achenbrenner
 (Register of Deeds)

By _____ Deputy

FORM NO. 985-A

H.C. Miller Company
Producers of

Stock No. 26273

DOCUMENT NUMBER 134572

37-12

43712240000

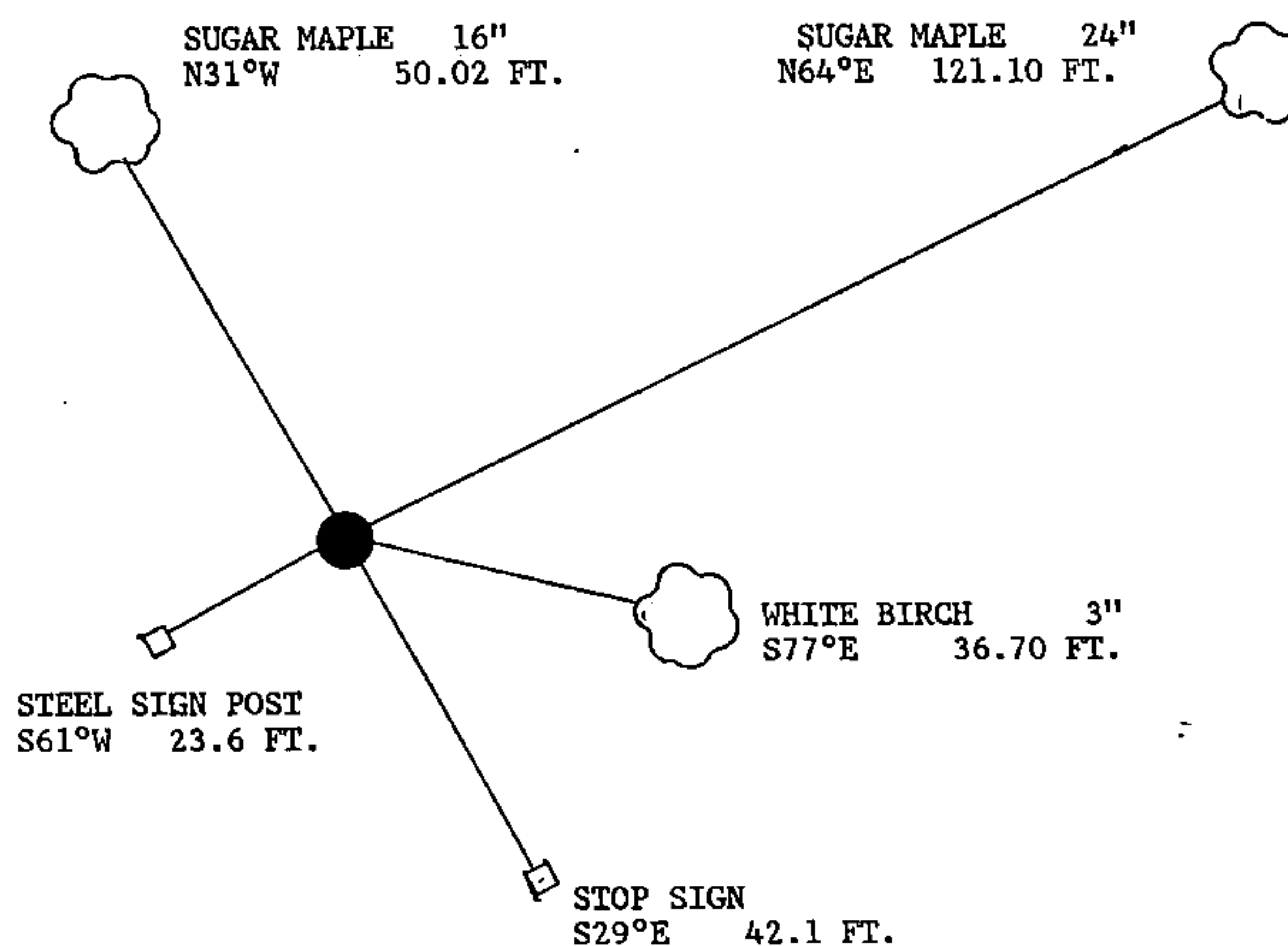
(e) Describe any material discrepancy between the location of the corner as restored or reestablished and the location of that corner as previously restored or reestablished by distance and direction. Show the discrepancy on the plan view drawing under (d), above. Show the distances between the corner as previously restored or reestablished and (1) the corner as restored or reestablished, and (2) to at least 2 of the witness monuments shown on the drawing in (d), above.

No discrepancy, first corner restoration.

(f) Was the corner restored through acceptance of (1) an obliterated evidence location, or, (2) a found perpetuated location?

The corner restored through acceptance of an obliterated evidence location.

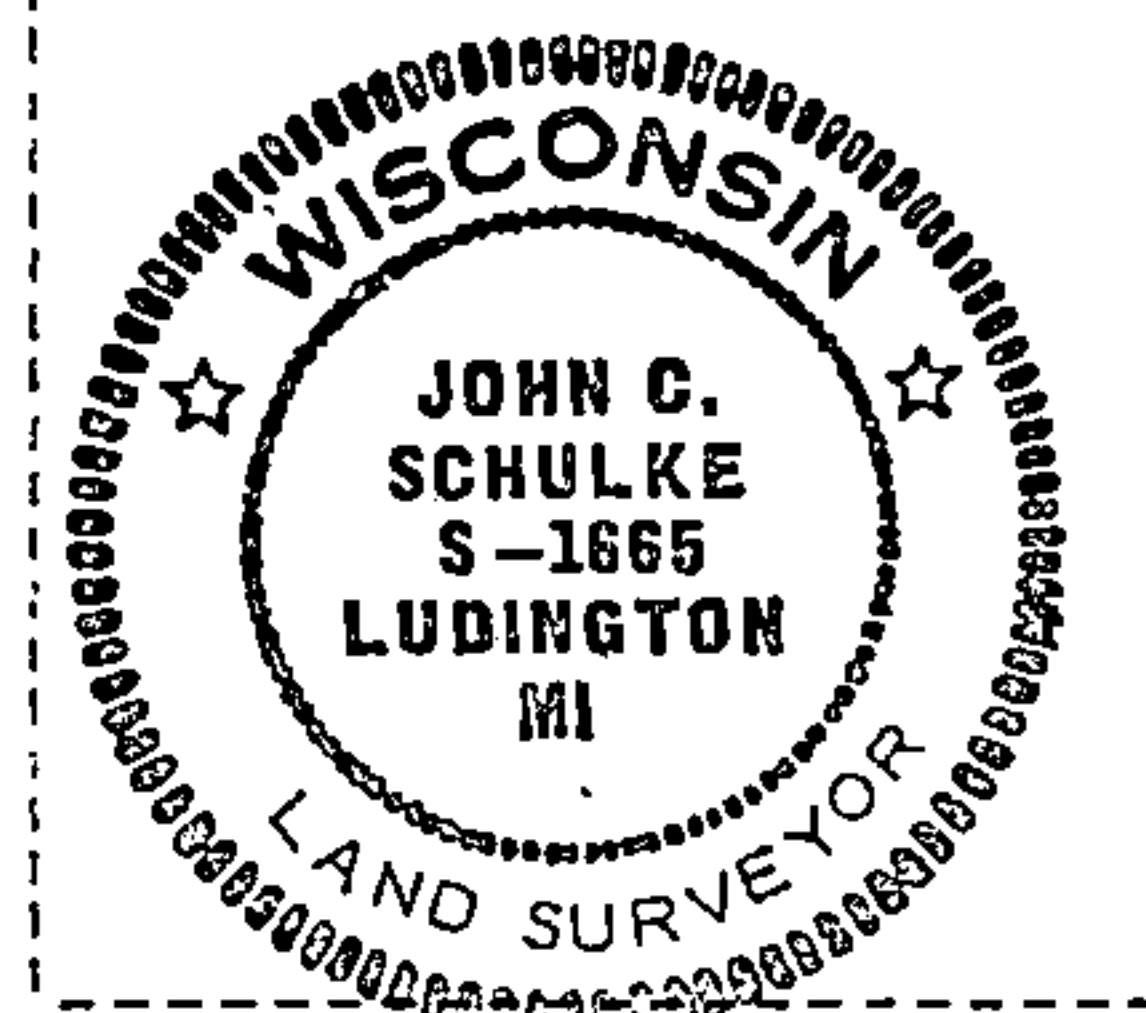
(g&h) Was the corner reestablished through lost corner proportionate methods? If so, show the method, including the directions and distances to other public land survey corners used as evidence or used for proportioning in determining the corner location?



SECTION CORNER

S24		S19
+		
S25		S30

Affix Land Surveyor Seal



(i) I, John C. Schulke
(type or print name) certify that the corner location shown on this record was determined by me or under my direction and control and that this U.S. Public Land Survey Monument Record is correct and complete to the best of my knowledge and belief.

John C. Schulke 11-9-87
Signature Date

Survey requested by: Doris Staege 2/1/88
District Ranger Date