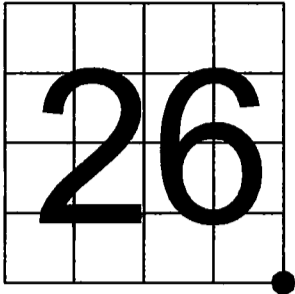


U. S. PUBLIC LAND SURVEY MONUMENT RECORD

NOTE: This form is intended and designed to fulfill all requirements of Wisconsin Administrative Code, Chapter A-E 7.08 U.S. Public Land Survey Monument Record (3) (a-i)

A-E 7.08(3)(a) Identity of corner:  
Southeast Corner Section 26,  
Township 37 North, Range 12 East  
of the Fourth Principal Meridian,  
Town of Hiles, Forest County, Wisconsin

WISCRS - FOREST COUNTY  
N: 600,576.521 USft (XXX,XXX.XXX)  
E: 825,395.427 USft (XXX,XXX.XXX)  
Datum: NAD83 (2011)  
GNSS Method RTK  
GNSS Control WISCORS VRS



The coordinate value shown has been verified by the average of two or more GPS observations at a markedly different time. Coordinates shown in parenthesis are previously published values.

A-E 7.08(3)(b)

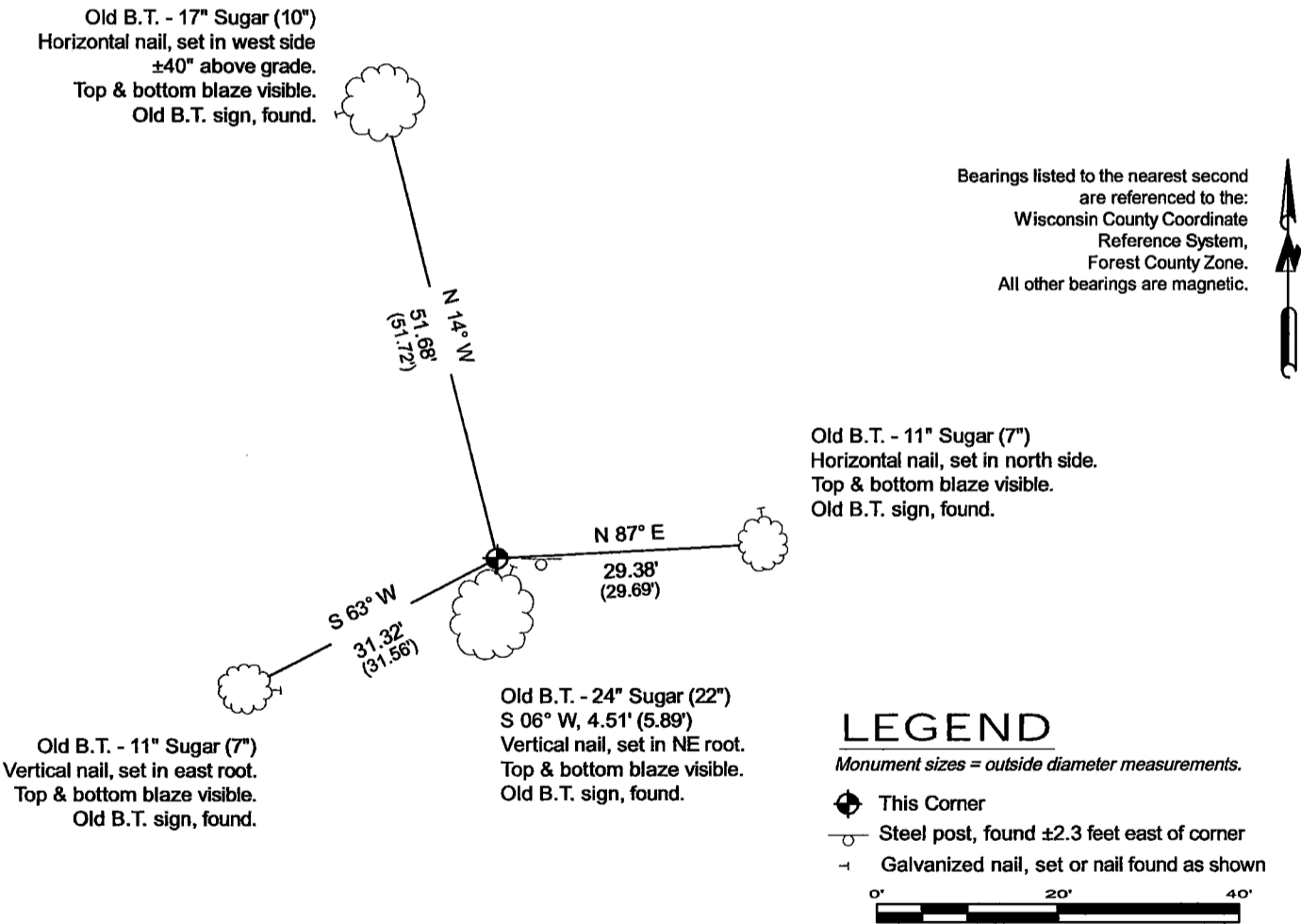
Original Surveyor: William E. Daugherty - August 17, 1859 to August 23, 1859  
Lind 10 - S 87° E, 15 Links, Hemlock 8 - S 25° W, 55 Links

See previous U.S.Public Land Survey Monument Record - V-21 - March 3, 1987 - Surveyor 1651 - Alan D. Harrison - THENCE:

- November 12, 1987 - Surveyor 1665 - John C. Schulke - indicates this position as "2-1/2" diameter aluminum pipe monument" on county record Map #371225-19871112.

February 21, 2025 - I found a 2.4" diameter aluminum pipe monument with a 3.25" diameter aluminum cap stamped to identify the corner location. The monument is extends ±4" above grade and is on high land. I also found 4 of Harrison's bearing trees alive and in good condition, and his steel sign post. I established 0 new reference monuments as shown below.

A-E 7.08(3)(c)(d) Plan view of corner with references to at least 4 witness monuments.



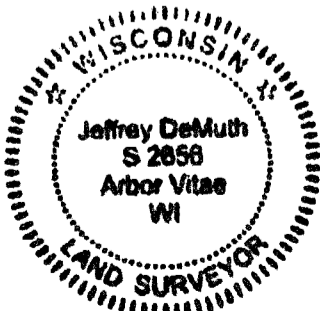
A-E 7.08(3)(e) 1859 Surveyor set a post, 1987 Surveyor set a 2 1/2" diameter aluminum pipe monument, 1987 Surveyor found the same as did I in 2025.

A-E 7.08(3)(f) I accept this monument in good faith as a FOUND PERPETUATED LOCATION of the corner.  
A-E 7.08(3)(g)(h) This corner was not determined through lost-corner-proportionate methods.

A-E 7.08(3)(i) I, Jeffrey L. DeMuth, Professional Land Surveyor No. S-2656, hereby certify that the corner location on this record was determined by me or under my direction and control, and that this U.S. Public Land Survey Monument Record is correct and complete to the best of my knowledge, and belief.

SIGNATURE

February 28, 2025  
DATE



43712260000

43712260000

V21

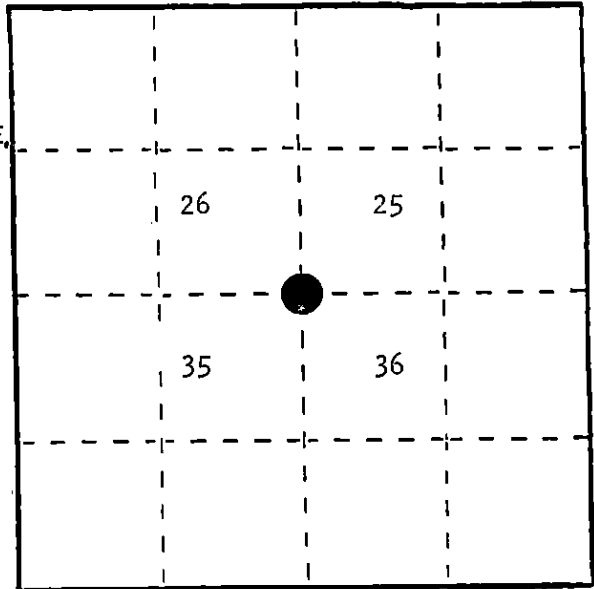
## U. S. PUBLIC LAND SURVEY MONUMENT RECORD

INSTRUCTIONS: This record shall show the location of the corner and shall include all of the following nine elements (a through i).

- (a) Identify the corner by reference to the U.S. public land survey system.

○ = Corner monument restored.

Corner to Sections 25-26-35-36, T.37N., R.12E,  
Forest County, Wisconsin.



REGISTER'S OFFICE  
Forest County, Wis.

Received for record this 21st day

of April A.D., 1987 at

9:20 o'clock A.M. and recorded  
in Vol. CORNER RESTORATIONS  
page V-21

T. Aschenbrenner  
Register of Deeds

- (b) Describe any record evidence, monument evidence, occupational evidence, testimonial evidence or any other material evidence you considered, and whether the monument was found or placed.

In 1859, William Daugherty set a wood post with the following B.T.'s. Linn 10" S 87° E 15 links; Hemlock 8" S 25° W 55 links.

1916 Soo Line Railroad plat calls corner 680' South of railroad centerline.

In 1930, Ray Iverson found a 5"x5"x38" scribed squared wood post in good condition. He placed a location poster on a 12" Maple South 10 links.

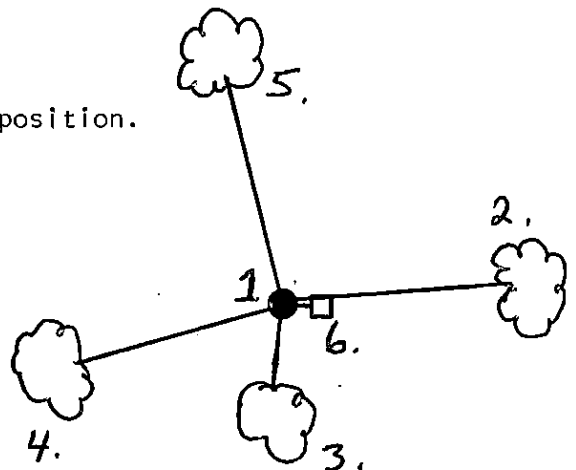
In 1963, Jean Resvick found a fence corner with fences running North and East.

In 1984, Alan Harrison found fence corner as per Resvick with a ½" iron bar in fence corner post hole, a Maple, now 22", as per Iverson, but could not locate remains of original B.T.'s as they fall in woods road. Distance to railroad centerline measured as 677' matches railroad plat. Corner position accepted as best available evidence of corner position and remonumented with a 2½"x30" aluminum monument.

- (c) In the plan view drawing below, provide reference ties to at least 4 witness monuments, or, if the location is within a municipality, to at least 2 witness monuments. (Witness monuments shall be made of concrete, natural stone, iron or other equally durable material.)  
Describe witness monuments.

- (d) Show a plan view drawing depicting the relevant monuments and reference ties which is sufficient in detail to enable accurate relocation of the corner monument if the corner monument is disturbed. Indicate north.

1. Aluminum monument stamped to identify corner position.
2. Sugar 7" N87E 29.69 feet
3. Sugar 22" S6W 5.89 feet
4. Sugar 7" S63W 31.56 feet
5. Sugar 10" N14W 51.72 feet
6. Steel sign post East 2.19 feet



- (e) Describe any material discrepancy between the location of the corner as restored or reestablished and the location of that corner as previously restored or reestablished by distance and direction. Show the discrepancy on the plan view drawing under (d), above. Show the distances between the corner as previously restored or reestablished and (1) the corner as restored or reestablished, and (2) to at least 2 of the witness monuments shown on the drawing in (d), above.

None

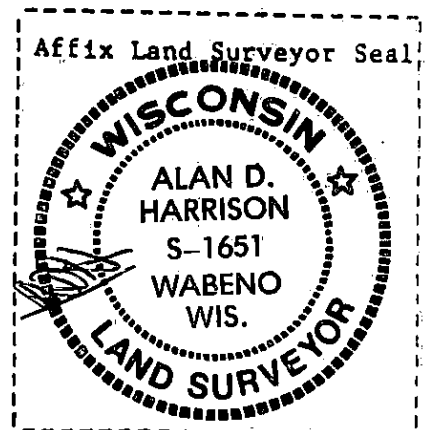
- (f) Was the corner restored through acceptance of (1) an obliterated evidence location, or, (2) a found perpetuated location?

(2) a found perpetuated location.

- (g&h) Was the corner reestablished through lost corner proportionate methods? If so, show the method, including the directions and distances to other public land survey corners used as evidence or used for proportioning in determining the corner location?

No.

- (i) I, Alan D. Harrison  
(type or print name) certify that the corner location shown on this record was determined by me or under my direction and control and that this U.S. Public Land Survey Monument Record is correct and complete to the best of my knowledge and belief.



Signature

Date

3/3/87