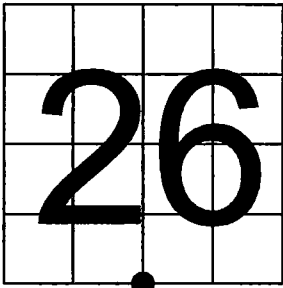


U. S. PUBLIC LAND SURVEY MONUMENT RECORD

NOTE: This form is intended and designed to fulfill all requirements of Wisconsin Administrative Code, Chapter A-E 7.08 U.S. Public Land Survey Monument Record (3) (a-i)

A-E 7.08(3)(a) Identity of corner:
South 1/4 Corner Section 26,
Township 37 North, Range 12 East
of the Fourth Principal Meridian,
Town of Hiles, Forest County, Wisconsin

WISCRS - FOREST COUNTY
N: 600,459.678 USft (XXX,XXX.XXX)
E: 822,774.781 USft (XXX,XXX.XXX)
Datum: NAD83 (2011)
GNSS Method RTK
GNSS Control WISCORS VRS



The coordinate value shown has been verified by the average of two or more GPS observations at a markedly different time. Coordinates shown in parenthesis are previously published values.

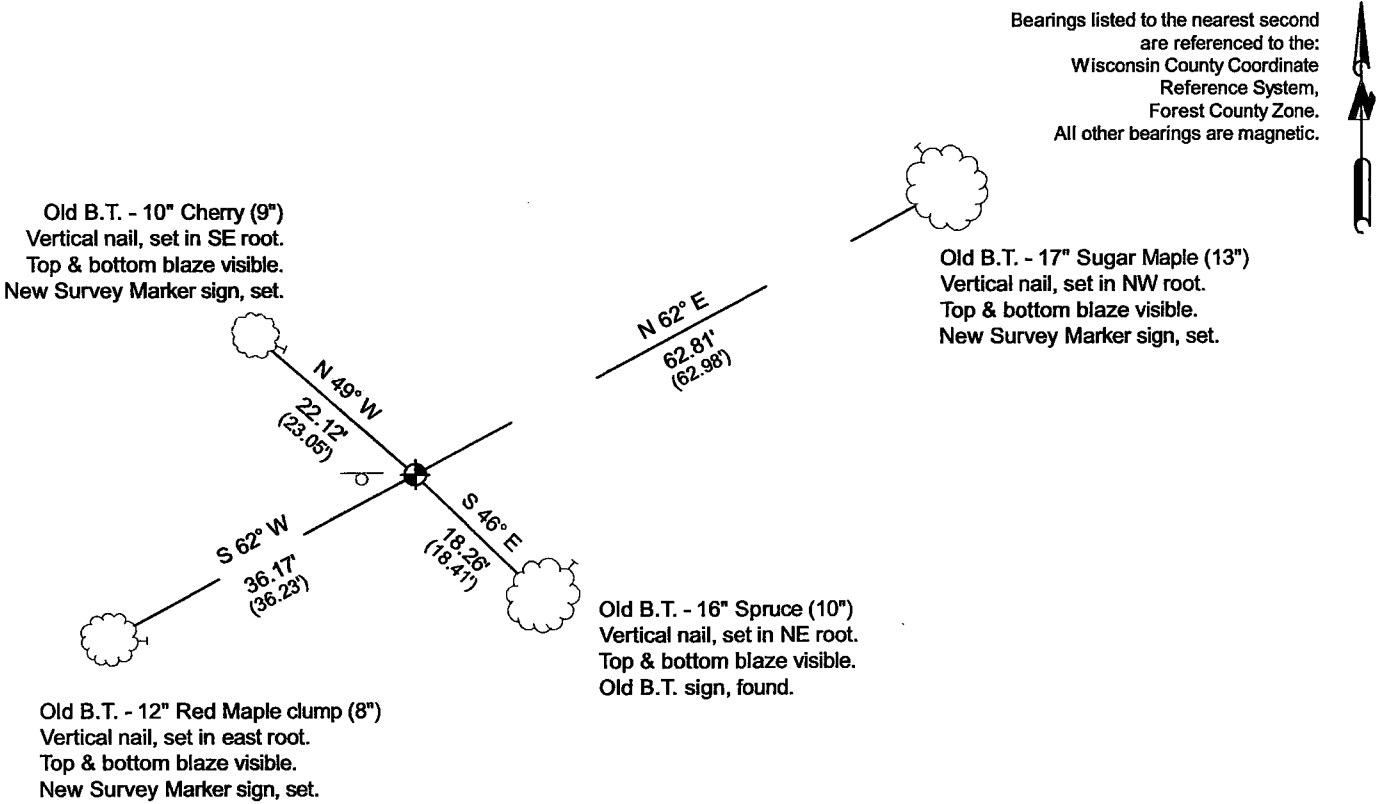
A-E 7.08(3)(b)

Original Surveyor: William E. Daugherty - August 17, 1859 to August 23, 1859
Lind 16 - N 8° W, 10 Links, Birch 16 - S 65° E, 10 Links

See previous U.S.Public Land Survey Monument Record - V-19 - October 1, 1999 - Surveyor 1634 - Gary Lee Pisoni - THENCE:

February 21, 2025 - I found a 2.4" diameter aluminum pipe monument with a 3.25" diameter aluminum cap stamped to identify the corner location. The monument extends ±5" above grade and is on high land. I also found 3 of Schulke's bearing trees alive and in good condition, and his steel sign post, and 1 new bearing tree by Pisoni, also alive and in good condition. I established 0 new reference monuments as shown below.

A-E 7.08(3)(c)(d) Plan view of corner with references to at least 4 witness monuments.



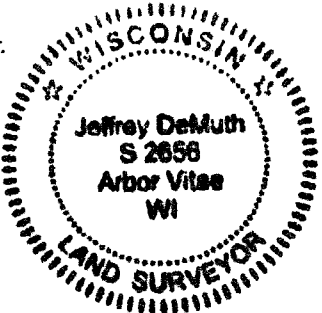
LEGEND

- Monument sizes = outside diameter measurements.
- ⊕ This Corner
 - Steel post, found ±1 foot west of corner
 - Galvanized nail, set or nail found as shown
- 0' 20' 40'

A-E 7.08(3)(e) 1859 Surveyor set a post, 1987 Surveyor set a 2 1/2" diameter aluminum pipe monument, 1999 Surveyor found the same as did I in 2025.

A-E 7.08(3)(f) I accept this monument in good faith as a FOUND PERPETUATED LOCATION of the corner.
A-E 7.08(3)(g)(h) This corner was not determined through lost-corner-proportionate methods.

A-E 7.08(3)(i) I, Jeffrey L. DeMuth, Professional Land Surveyor No. S-2656, hereby certify that the corner location on this record was determined by me or under my direction and control, and that this U.S. Public Land Survey Monument Record is correct and complete to the best of my knowledge, and belief.



SIGNATURE

February 28, 2025

DATE

43712260020

43712260020

V19

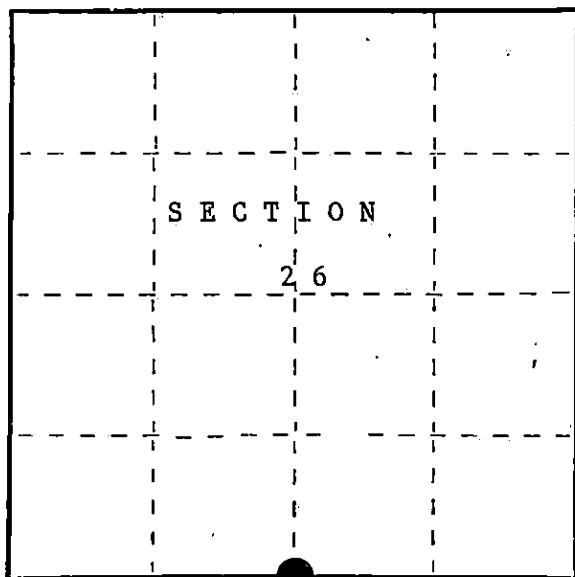
U.S. PUBLIC LAND SURVEY MONUMENT RECORD

Index No. V-19

State of Wisconsin }
County of FOREST } ss.

I, John G. Schulke, do hereby certify that on the 13th day of April, 1987, I found evidence of the South Quarter corner of Section 26 Township thirty-seven, North, Range twelve East, Fourth Principal Meridian, as described hereon; and that from this evidence I established a new monument and accessories as described hereon to perpetuate the original location of this corner.

Resident witnesses:



○ = Corner monument restored.

History of original corner establishment:

Original corner established in 1859 by William Daugherty, U.S. Deputy Surveyor

Set a wooden post with the following bearing trees:

Lind	16"	N08°W	10 lks.
Birch	16"	S65°E	10 lks.

Description of corner evidence found:

Found scribed wood post laying on it's side, estimated to be 75 to 100 yrs. old. Accepted post as the best evidence of the corner location.

Description of monument and accessories I established to perpetuate the original location of this corner.

Set 2 1/2" diameter aluminum pipe monument, 3 feet long, 30 inches in the ground with an aluminum cap stamped; T37N, R12E, 1/4, S26, S35, 1987, S-1665.

Set a steel sign post West a distance of 0.7 feet.

Red Maple clump	6"	S62°W	36.23 feet
Cherry	8"	N49°W	23.05 feet
Sugar Maple	11"	N62°E	62.98 feet
Spruce	10"	S58°E	22.31 feet

Dated at Hiles, Wis., this Ninth day of November, 1987.

Signature John C. Schulke Title Land Surveyor Registration No S-1665
(County Surveyor, Registered Land Surveyor, or other duly authorized official)

Office of Register of Deeds, County of Forest, I hereby certify that the within instrument was filed in this office for record on the 2nd day of February, 1988 at 9:40 o'clock A.M.

Paul Aschenbrenner
(Register of Deeds)

By Deputy

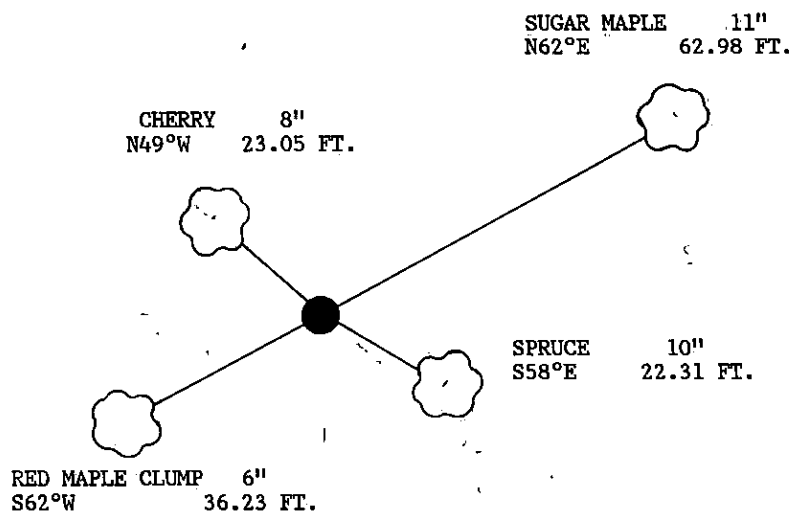
(e) Describe any material discrepancy between the location of the corner as restored or reestablished and the location of that corner as previously restored or reestablished by distance and direction. Show the discrepancy on the plan view drawing under (d), above. Show the distances between the corner as previously restored or reestablished and (1) the corner as restored or reestablished, and (2) to at least 2 of the witness monuments shown on the drawing in (d), above.

No discrepancy.

(f) Was the corner restored through acceptance of (1) an obliterated evidence location, or, (2) a found perpetuated location?

The corner restored through acceptance of an obliterated evidence location.

(g&h) Was the corner reestablished through lost corner proportionate methods? If so, show the method, including the directions and distances to other public land survey corners used as evidence or used for proportioning in determining the corner location?

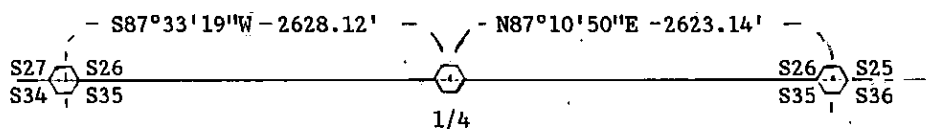


QUARTER-CORNER

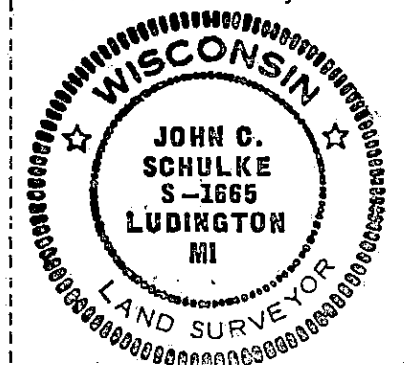
S26

— + —

S35



Affix Land Surveyor Seal



(i) John C. Schulke

(type or print name) certify that the corner location shown on this record was determined by me or under my direction and control and that this U.S. Public Land Survey Monument Record is correct and complete to the best of my knowledge and belief.

Signature John C. Schulke Date 11-9-87

Survey requested by: Dale D. Stree Date 2/1/88
District Ranger

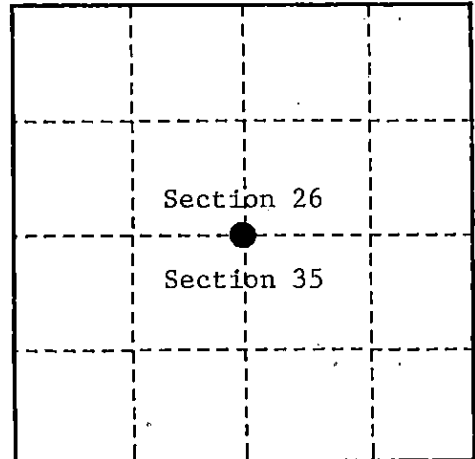
U. S. PUBLIC LAND SURVEY MONUMENT RECORD

INSTRUCTIONS:

This record shall show the location of the corner and shall include all of the following nine elements (a through i).

- (a) Identify the corner by reference to the U.S. public land survey system.
 O = Corner monument restored.

Quarter Corner common to Sections 26 and 35
 T37N, R12E, Forest County, Wisconsin



- (b) Describe any record evidence, monument evidence, occupational evidence, testimonial evidence or any other material evidence you considered, and whether the monument was found or placed.

Original Government Survey in 1859 by William E. Daugherty.

In 1987, John C. Schulke, RLS, found a scribed wood post laying on its side and accepted the post as the best available evidence for the corner location. In place of wood post, set a 2½" diameter aluminum pipe monument, 3 feet long, with aluminum cap stamped as follows: T37N, R12E, 1/4, S26, S35, 1987, S-1665, from which the following bear:

Red Maple clump	6"	S 62°W	36.23 feet
Cherry	8"	N 49°W	23.05 feet
Sugar Maple	11"	N 62°E	62.98 feet
Spruce	10"	S 58°E	22.31 feet
Steel sign post		West	0.7 feet

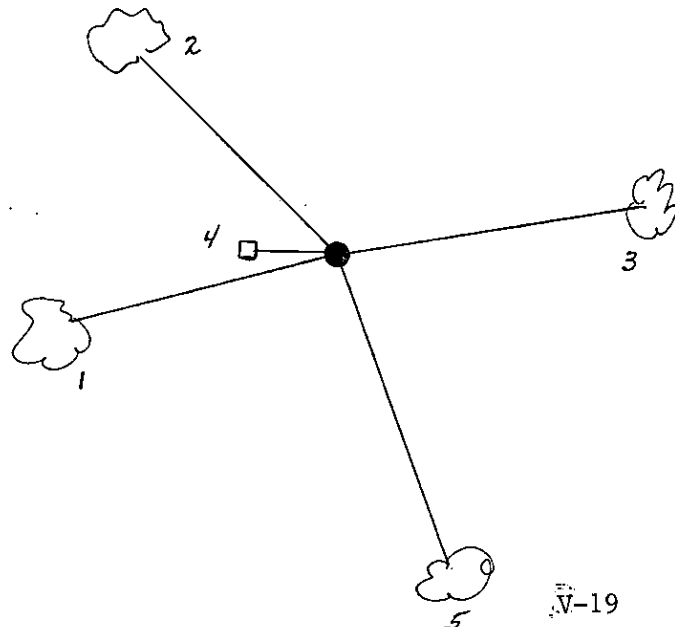
On 9/8/99, Gary L. Pisoni RLS, found above monument and assessories as described below.

See previous Land Corner Certificate dated February 2, 1988, Document Number 134580

- (c) In the plan view drawing below, provide reference ties to at least 4 witness monuments, or, if the location is within a municipality, to at least 2 witness monuments. (witness monuments shall be made of concrete, natural stone, iron or other equally durable material.)

- (d) Show a plan view drawing depicting the relevant monuments and reference ties which is sufficient in detail to enable accurate relocation of the corner monument if the corner monument is disturbed. Indicate north.

1. Red Maple clump, 8", S 62°W, 36.23 feet
2. Cherry, 9", N 49°W, 23.05 feet
3. Sugar Maple, 13", N 62°E, 62.98 feet
4. Steel sign post, West, 0.7 feet
5. Spruce, 10", S 46°E, 18.41 feet (NBT)



REGISTER'S OFFICE
 Forest County, Wis.
 Received for record this 27th day
 of October A.D., 1999 at
10:05 o'clock A.M. and recorded
 in Vol. Corner Restoration
 page V-19
Kay Swanson, Deputy
 Register of Deeds

43712260020

- (e) Describe any material discrepancy between the location of the corner as restored or reestablished and the location of that corner as previously restored or reestablished by distance and direction. Show the discrepancy on the plan view drawing under (d), above. Show the distances between the corner as previously restored or reestablished and (1) the corner as restored or reestablished, and (2) to at least 2 of the witness monuments shown on the drawing in (d), above.

None

- (f) Was the corner restored through acceptance of (1) an obliterated evidence location, or, (2) a found perpetuated location?

Restored from accepted evidence.

- (g & h) Was the corner reestablished through lost corner proportionate methods? If so, show the method, including the directions and distances to other public land survey corners used as evidence or used for proportioning in determining the corner location?

- (1) I, Gary L. Pisoni
(type or print name) certify that the corner location shown on this record was determined by me or under my direction and control and that this U.S. Public Land Survey Monument Record is correct and complete to the best of my knowledge and belief.

Signature

Gary L. Pisoni

10-1-99

Date

CERTIFICATE READY FOR FILING:

[Signature]
District Ranger

