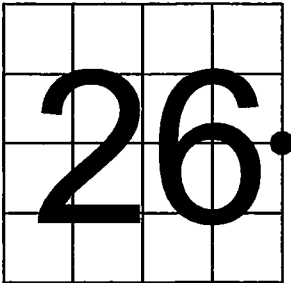


U. S. PUBLIC LAND SURVEY MONUMENT RECORD

NOTE: This form is intended and designed to fulfill all requirements of Wisconsin Administrative Code, Chapter A-E 7.08 U.S. Public Land Survey Monument Record (3) (a-i)

A-E 7.08(3)(a) Identity of corner:
East 1/4 Corner Section 26,
Township 37 North, Range 12 East
of the Fourth Principal Meridian,
Town of Hiles, Forest County, Wisconsin

WISCRS - FOREST COUNTY
N: 603,251.813 USft (XXX,XXX.XXX)
E: 825,375.782 USft (XXX,XXX.XXX)
Datum: NAD83 (2011)
GNSS Method RTK
GNSS Control WISCORS VRS



The coordinate value shown has been verified by the average of two or more GPS observations at a markedly different time. Coordinates shown in parenthesis are previously published values.

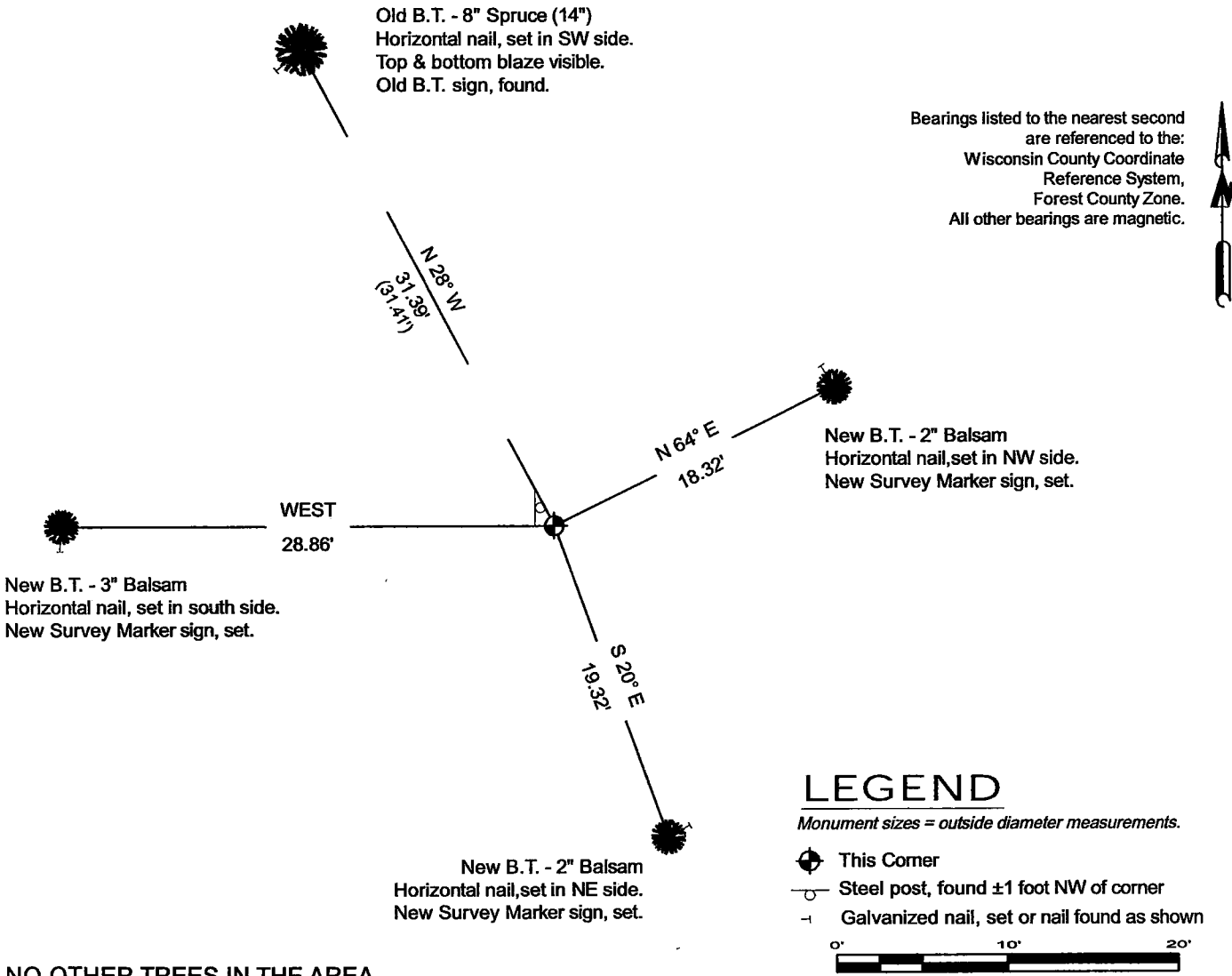
A-E 7.08(3)(b)

Original Surveyor: William E. Daugherty - August 17, 1859 to August 23, 1859
Fir 8 - N 88° W, 12 Links, Hemlock 8 - N 46° E, 9 Links

See previous U.S. Public Land Survey Monument Record - T-21 - November 11, 1987 - Surveyor 1665 - John C. Schulke - THENCE:

February 21, 2025 - I found a 2.4" diameter aluminum pipe monument with a 3.25" diameter aluminum cap stamped to identify the corner location. The monument extends ±24" above grade and is in an alder swamp. I also found 1 of Schulke's bearing trees alive and in good condition, and his steel sign post. I established 3 new reference monuments as shown below.

A-E 7.08(3)(c)(d) Plan view of corner with references to at least 4 witness monuments.



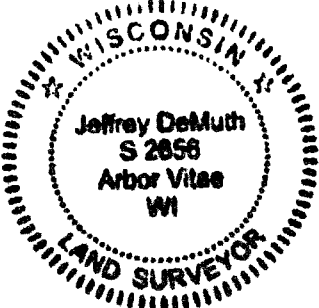
NO OTHER TREES IN THE AREA

A-E 7.08(3)(e) 1859 Surveyor set a post, 1987 Surveyor set a 2 1/2" diameter aluminum pipe monument, I found the same in 2025.

A-E 7.08(3)(f) I accept this monument in good faith as a FOUND PERPETUATED LOCATION of the corner.
A-E 7.08(3)(g)(h) This corner was previously determined through lost-corner-proportionate methods.

A-E 7.08(3)(i) I, Jeffrey L. DeMuth, Professional Land Surveyor No. S-2656, hereby certify that the corner location on this record was determined by me or under my direction and control, and that this U.S. Public Land Survey Monument Record is correct and complete to the best of my knowledge, and belief.

SIGNATURE _____ DATE February 28, 2025



U.S. PUBLIC LAND SURVEY MONUMENT RECORD

Index No. T-21

State of Wisconsin }
County of FOREST } ss.

I, John C. Schulke, do hereby
certify that on the 28th day
of April, 1987, I found
evidence of the West Quarter
corner of Section 25
Township thirty-seven, North, Range
twelve East, Fourth Principal Meridian,
as described hereon; and that from this evidence
I established a new monument and accessories
as described hereon to perpetuate the original
location of this corner.

Resident witnesses:

History of original corner establishment:

Original corner established in 1859 by William Daugherty, U.S. Deputy Surveyor
Set a wooden post with the following bearing trees:
Fir 8" N88°W 12 lks.
Hemlock 8" N46°E 9 lks.

Description of corner evidence found:

Found scribed wood post which is located N12°E a distance
of 53.0 ft. from the proportional position. Did not
accept this because of a wood post was found at the
North Sixteenth of Sections 25 and 26. This post had
been proportionate between the Northwest and Southwest
corners of Section 25.

Description of monument and accessories I established to perpetuate the original location of this corner.

Set 2 1/2" diameter aluminum pipe monument, 5 feet long, 4 feet in the
ground with an aluminum cap stamped; T37N, R12E, 1/4, S25, S26, 1987, S-1665.
Set a steel sign post South a distance of 0.9 feet. Established the following
bearing trees which are blazed, scribed, painted and tagged.

Spruce	8"	N57°E	34.60 feet
Spruce	4"	N28°W	31.41 feet
Spruce	11"	N80°W	139.19 feet
Spruce	4"	S71°E	13.65 feet

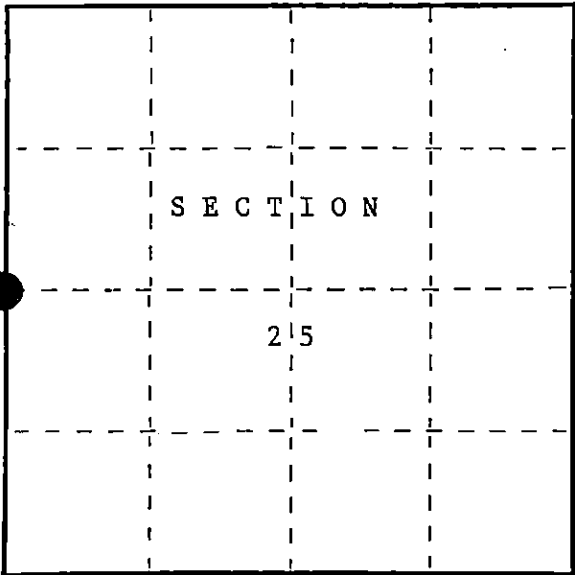
Dated at Hiles, Wis., this Eleventh day of November, 1987.

Signature John C. Schulke Title Land Surveyor Registration No. S-1665
(County Surveyor, Registered Land Surveyor, or other duly authorized official)

Office of Register of Deeds, County of Forest, I hereby certify that the within
instrument was filed in this office for record on the 2nd day of February, 1988
at 9:40 o'clock A. M.

Paul Achenbacher
(Register of Deeds)

By Deputy



○ = Corner monument restored.

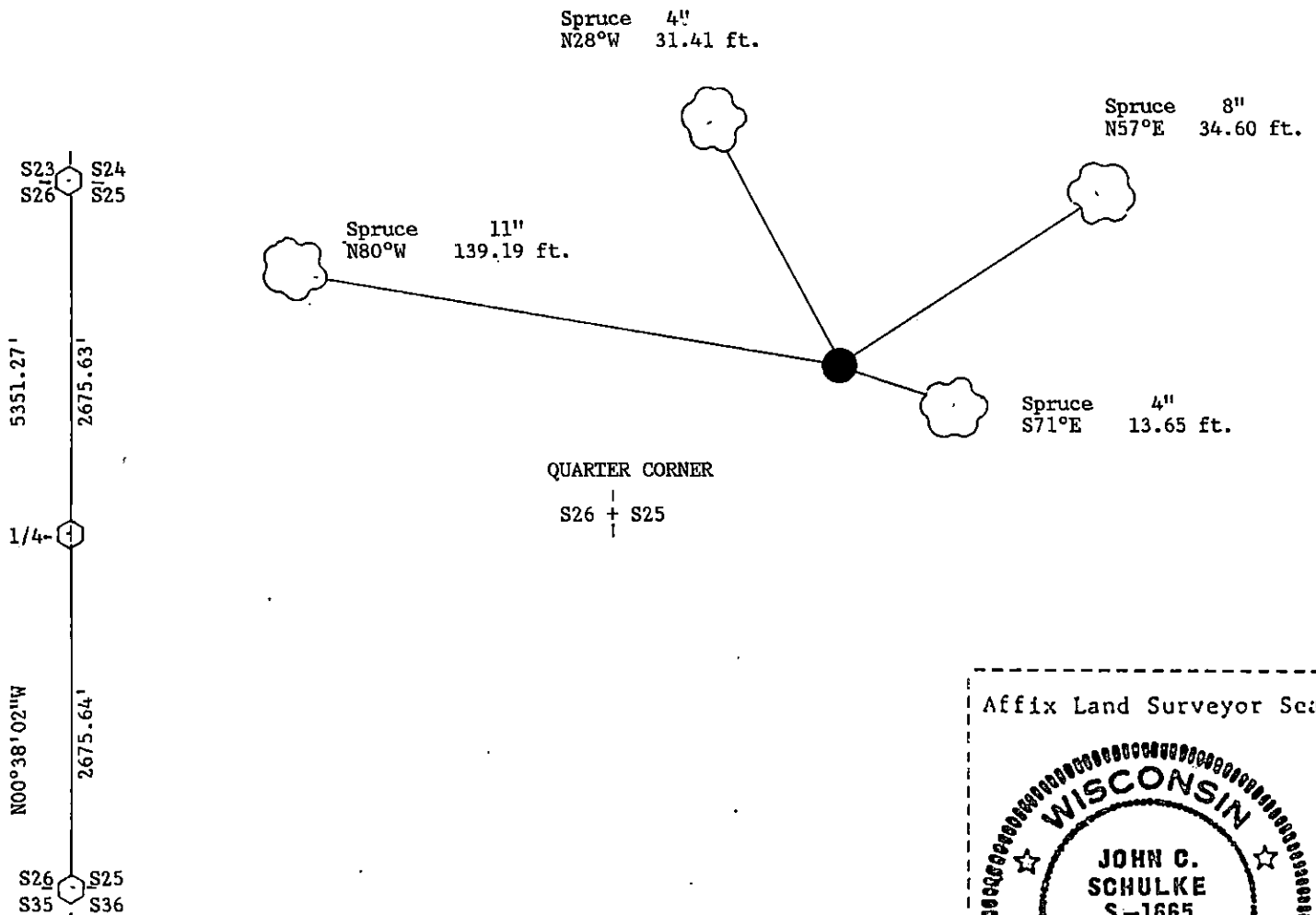
37-12
43712262000

(e) Describe any material discrepancy between the location of the corner as restored or reestablished and the location of that corner as previously restored or reestablished by distance and direction. Show the discrepancy on the plan view drawing under (d), above. Show the distances between the corner as previously restored or reestablished and (1) the corner as restored or reestablished, and (2) to at least 2 of the witness monuments shown on the drawing in (d), above.

See discription of evidence found.

(f) Was the corner restored through acceptance of (1) an obliterated evidence location, or, (2) a found perpetuated location?
No.

(g&h) Was the corner reestablished through lost corner proportionate methods? If so, show the method, including the directions and distances to other public land survey corners used as evidence or used for proportioning in determining the corner location?
Yes.



(i) 1. John C. Schulke
(type or print name) certify that the corner location shown on this record was determined by me or under my direction and control and that this U.S. Public Land Survey Monument Record is correct and complete to the best of my knowledge and belief.

John C. Schulke Nov 11, 1987
Signature Date

Survey requested by: Dale S. Stacey 2/1/88
District Ranger Date

