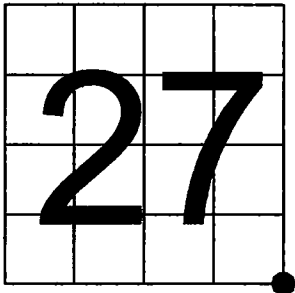


U. S. PUBLIC LAND SURVEY MONUMENT RECORD

NOTE: This form is intended and designed to fulfill all requirements of Wisconsin Administrative Code, Chapter A-E 7.08 U.S. Public Land Survey Monument Record (3) (a-i)

A-E 7.08(3)(a) Identity of corner:
Southeast Corner Section 27,
Township 37 North, Range 12 East
of the Fourth Principal Meridian,
Town of Hiles, Forest County, Wisconsin

WISCRS - FOREST COUNTY
N: 600,359.756 USft (XXX,XXX.XXX)
E: 820,148.390 USft (XXX,XXX.XXX)
Datum: NAD83 (2011)
GNSS Method RTK
GNSS Control WISCORS VRS



The coordinate value shown has been verified by the average of two or more GPS observations at a markedly different time. Coordinates shown in parenthesis are previously published values.

A-E 7.08(3)(b)

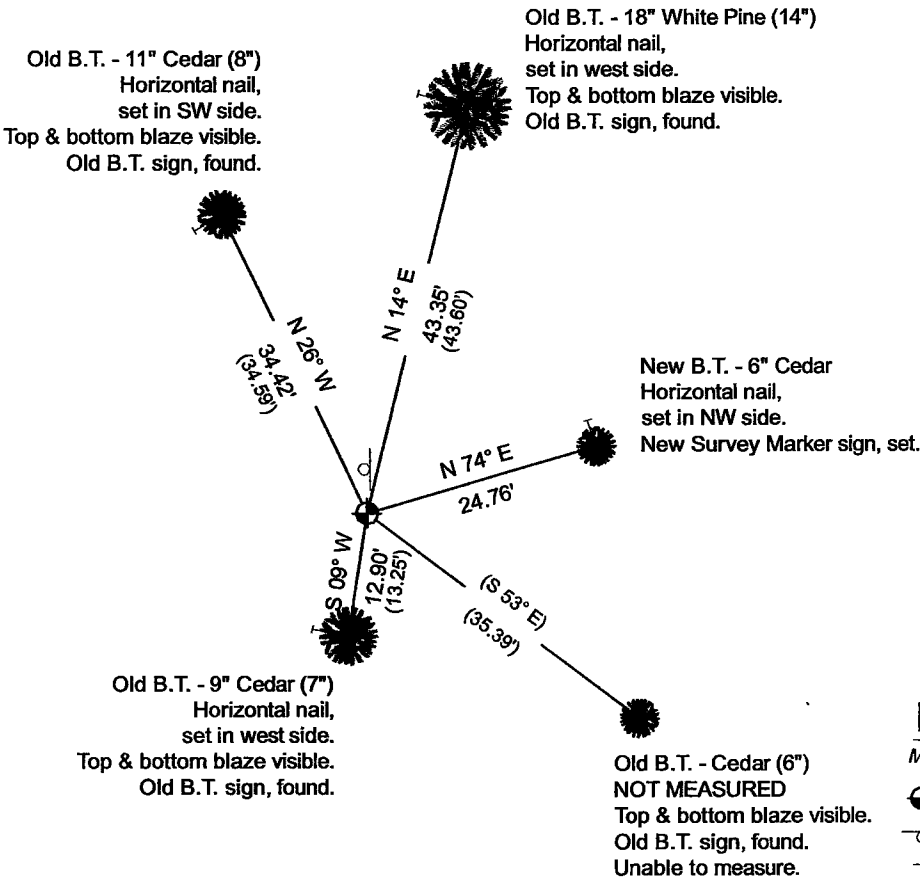
Original Surveyor: William E. Daugherty - August 17, 1859 to August 23, 1859
Tamarac 8 - S 66° E, 3 Links, Tamarac 8 - N 10° W, 8 Links

See previous U.S.Public Land Survey Monument Record - V-17 - December 4, 1984 - Surveyor 1651 - Alan D. Harrison - THENCE:

- November 11, 1987 - Surveyor 1665 - John C. Schulke - indicates this position as "2-1/2" diameter aluminum pipe monument" on county record Map #371227-19871111.

February 20, 2025 - I found a 2.4" diameter aluminum pipe monument with a 3.25" diameter aluminum cap stamped to identify the corner location. The monument extends ±12" above grade and is in a alder / cedar swamp. I also found 4 of Harrison's bearing trees alive and in good condition, and his steel sign post. I established 1 new reference monuments as shown below.

A-E 7.08(3)(c)(d) Plan view of corner with references to at least 4 witness monuments.



Bearings listed to the nearest second are referenced to the: Wisconsin County Coordinate Reference System, Forest County Zone. All other bearings are magnetic.

LEGEND

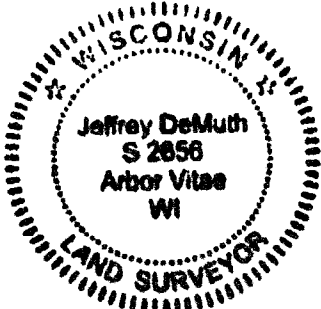
- Monument sizes = outside diameter measurements.
- This Corner
 - Steel post, found ±1.3 feet north of corner
 - Galvanized nail, set or nail found as shown
- 0' 20' 40'

A-E 7.08(3)(e) 1859 Surveyor set a post, 1984 Surveyor set a 2 1/2" diameter aluminum pipe monument, subsequent surveyors found the same, as did I in 2025.

A-E 7.08(3)(f) I accept this monument in good faith as a FOUND PERPETUATED LOCATION of the corner.
A-E 7.08(3)(g)(h) This corner was not determined through lost-corner-proportionate methods.

A-E 7.08(3)(i) I, Jeffrey L. DeMuth, Professional Land Surveyor No. S-2656, hereby certify that the corner location on this record was determined by me or under my direction and control, and that this U.S. Public Land Survey Monument Record is correct and complete to the best of my knowledge, and belief.

SIGNATURE DATE February 28, 2025



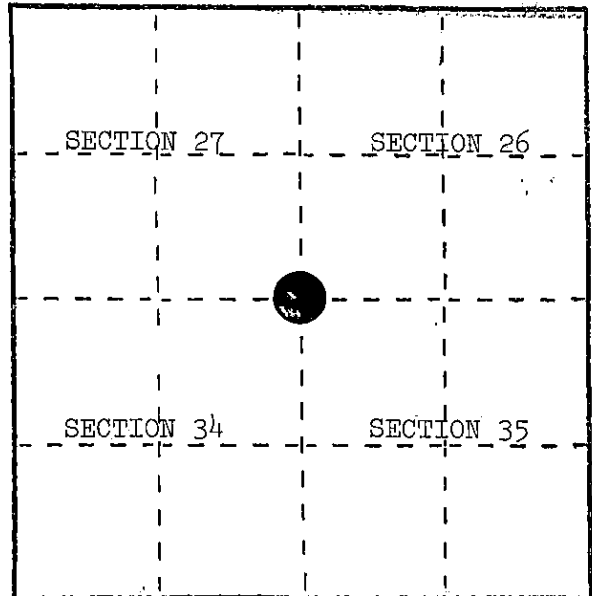
U. S. PUBLIC LAND SURVEY MONUMENT RECORD

INSTRUCTIONS: This record shall show the location of the corner and shall include all of the following nine elements (a through i).

- (a) Identify the corner by reference to the U.S. public land survey system.

O = Corner monument restored.

Section corner to Sections 26, 27, 34, and 35,
T.37N., R.12E.



- (b) Describe any record evidence, monument evidence, occupational evidence, testimonial evidence or any other material evidence you considered, and whether the monument was found or placed.

In 1859, William Daugherty set section post with the following BTs: Tamarack, 8", S.66°E., 3 links; Tamarack, 8", N.10°W., 8 links.

February 21, 1930, Ray Iverson found a square post 32" above ground in good condition and a 10' Tamarack snag 11" in diameter at N.10°W., 10 links. Placed a location tag on the NW side of a 12" White Pine from which the corner bears S.18°W., 63 links.

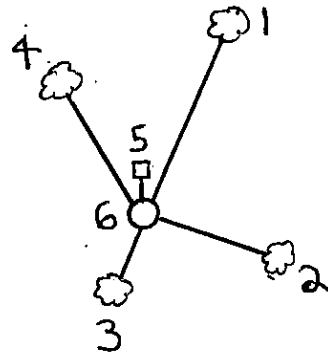
March 15, 1936, Carl Boettger found a square stake in fair condition with a 13" Tamarack BT, N.10°W., 20'

September 5, 1984, Alan Harrison found a wood post and post point with Tamarack stump remains at S.66°E., 2.0' and N.10°W., 5.3'. Also, found location tag on a 14" White Pine, N.14°E., 43.6'. Replaced wood post point with a 2" x 60" aluminum monument.

- (c) In the plan view drawing below, provide reference ties to at least 4 witness monuments, or, if the location is within a municipality, to at least 2 witness monuments. (Witness monuments shall be made of concrete, natural stone, iron or other equally durable material.)
Describe witness monuments.

- (d) Show a plan view drawing depicting the relevant monuments and reference ties which is sufficient in detail to enable accurate relocation of the corner monument if the corner monument is disturbed. Indicate north.

1. White Pine, 14", N.14°E., 43.60'
2. Cedar, 6", S.53°E., 35.39'
3. Cedar, 7", S.9°W., 13.25'
4. Cedar, 8", N.26°W., 34.59'
5. Steel Sign Post, North, 1.31'
6. 2" x 60" aluminum monument stamped to identify the corner.



REGISTER'S OFFICE }
Forest County, Wis. }

Received for record this... 23rd day
of January... A.D., 1985 at
9:00 o'clock... A.M. and

recorded in Vol. CORNER RESTORATIONS

on page V-17
Paul Aschmussen
REGISTER

V-17

(e) Describe any material discrepancy between the location of the corner as restored or reestablished and the location of that corner as previously restored or reestablished by distance and direction. Show the discrepancy on the plan view drawing under (d), above. Show the distances between the corner as previously restored or reestablished and (1) the corner as restored or reestablished, and (2) to at least 2 of the witness monuments shown on the drawing in (d), above.

(f) Was the corner restored through acceptance of (1) an obliterated evidence location, or, (2) a found perpetuated location?

(2) a found perpetuated location.

(g&h) Was the corner reestablished through lost corner proportionate methods? If so, show the method, including the directions and distances to other public land survey corners used as evidence or used for proportioning in determining the corner location?

No.

(i) I, Alan D. Harrison
(type or print name) certify that the corner location shown on this record was determined by me or under my direction and control and that this U.S. Public Land Survey Monument Record is correct and complete to the best of my knowledge and belief.

Alan D. Harrison 12/4/84
Signature Date

