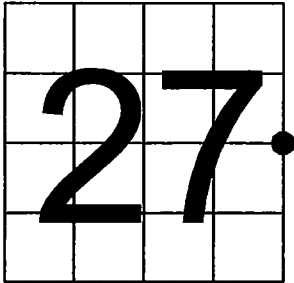


U. S. PUBLIC LAND SURVEY MONUMENT RECORD

NOTE: This form is intended and designed to fulfill all requirements of Wisconsin Administrative Code, Chapter A-E 7.08 U.S. Public Land Survey Monument Record (3) (a-i)

A-E 7.08(3)(a) Identity of corner:  
East 1/4 Corner Section 27,  
Township 37 North, Range 12 East  
of the Fourth Principal Meridian,  
Town of Hiles, Forest County, Wisconsin

WISCRS - FOREST COUNTY  
N: 602,980.771 USft (XXX,XXX.XXX)  
E: 820,094.562 USft (XXX,XXX.XXX)  
Datum: NAD83 (2011)  
GNSS Method RTK  
GNSS Control WISCORS VRS



The coordinate value shown has been verified by the average of two or more GPS observations at a markedly different time. Coordinates shown in parenthesis are previously published values.

A-E 7.08(3)(b)

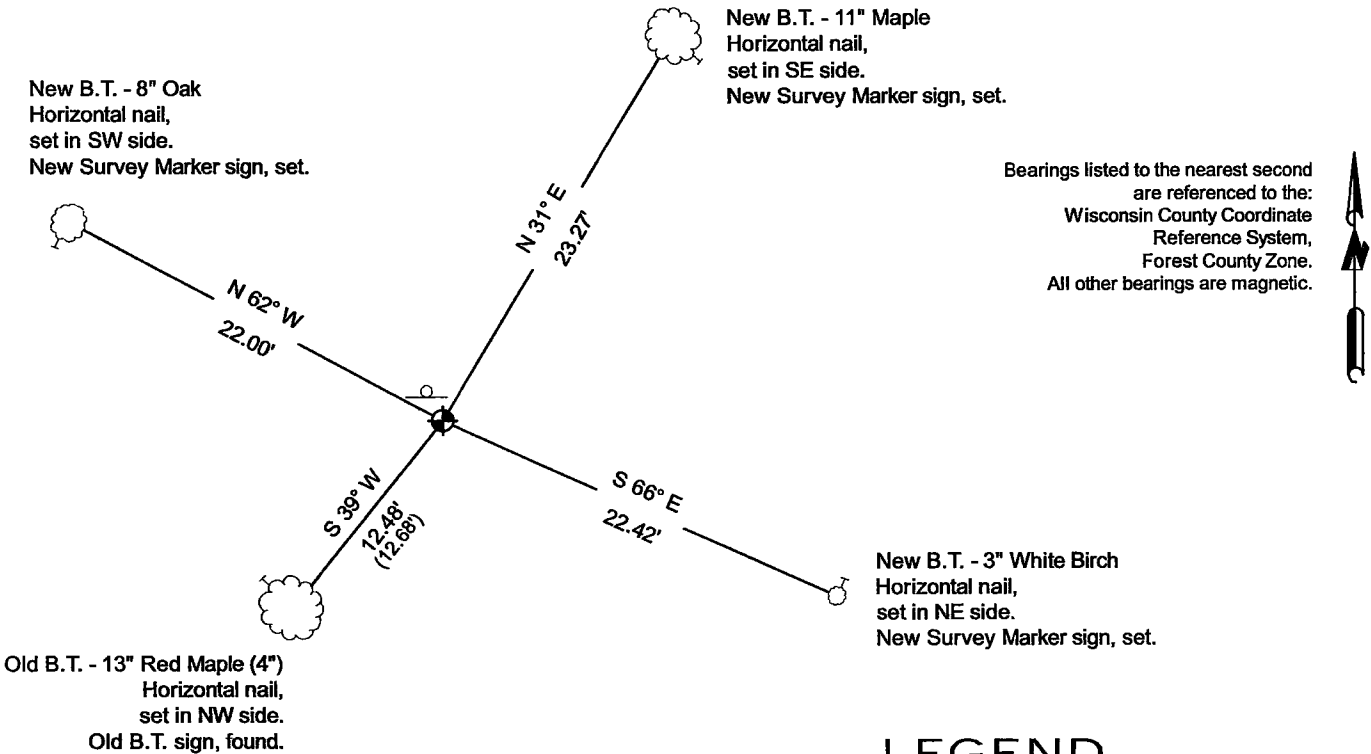
Original Surveyor: William E. Daugherty - August 17, 1859 to August 23, 1859  
Cedar 16 - N 51° E, 24 Links, Hemlock 20 - N 61° W, 24 Links

See previous U.S. Public Land Survey Monument Record - T-17 - January 5, 1987 - Surveyor 1665 - John C. Schulke - THENCE:

- February 7, 1998 - Surveyor 1731 - Kip W. Sodeer - indicates this position as "2-1/2" dia. aluminum cap mon." on county record Map #371227-19980207A.
- June 20, 2006 - Surveyor 1731 - Kip W. Sodeer - indicates this position as "2-1/2" aluminum cap monu" on county record Map #371227-20060620.

February 20, 2025 - I found a 2.4" diameter aluminum pipe monument with a 3.25" diameter aluminum cap stamped to identify the corner location. The monument extends ±6" above grade and is on high land. I also found 1 of Schulke's bearing trees alive and in good condition, and his steel sign post. I established 3 new reference monuments as shown below.

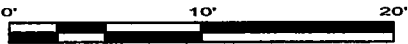
A-E 7.08(3)(c)(d) Plan view of corner with references to at least 4 witness monuments.



LEGEND

Monument sizes = outside diameter measurements.

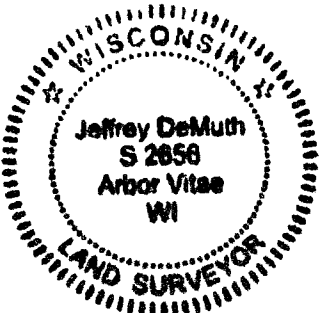
- ⊕ This Corner
- ⊖ Steel post, found ±1 foot NW of corner
- ⊖ Galvanized nail, set or nail found as shown



A-E 7.08(3)(e) 1859 Surveyor set a post, 1987 Surveyor set a 2 1/2" diameter aluminum pipe monument, subsequent surveyors found the same, as did I in 2025.

A-E 7.08(3)(f) I accept this monument in good faith as a FOUND PERPETUATED LOCATION of the corner.  
A-E 7.08(3)(g)(h) This corner was previously determined through lost-corner-proportionate methods.

A-E 7.08(3)(i) I, Jeffrey L. DeMuth, Professional Land Surveyor No. S-2656, hereby certify that the corner location on this record was determined by me or under my direction and control, and that this U.S. Public Land Survey Monument Record is correct and complete to the best of my knowledge, and belief.



SIGNATURE \_\_\_\_\_ DATE February 28, 2025

43712272000

43712272000

T17

U.S. PUBLIC LAND SURVEY MONUMENT RECORD

Index No. T-17

REGISTER'S OFFICE  
Forest County, Wis.  
Received for record this 24th day  
of February A.D., 1987, at  
2:00 o'clock P.M. and recorded  
in Vol. CORNER RESTORATIONS  
page T-17  
Paul Aschenbrenner  
Register of Deeds

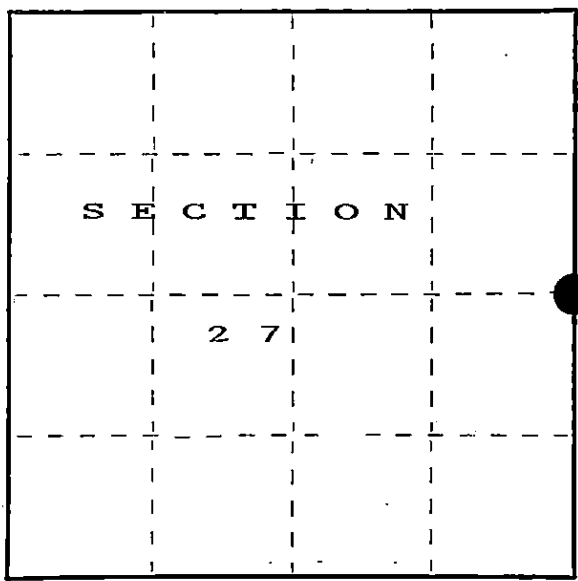
FORM NO. 985-A  
H.C. Miller Company  
a division of

Stock No. 26273

DOCUMENT NUMBER  
132190

State of Wisconsin }  
County of FOREST } ss.  
I John C. Schulke, do hereby  
certify that on the 30th day  
of July, 1986, I found  
evidence of the East Quarter  
corner of Section 27  
Township 37, North, Range  
12 East, Fourth Principal Meridian,  
as described hereon; and that from this evidence  
I established a new monument and accessories  
as described hereon to perpetuate the original  
location of this corner.

Resident witnesses:



○ = Corner monument restored.

History of original corner establishment:  
Original Government Survey in 1859 by William Daugherty.  
Cedar 16" S51°E 24 links  
Hemlock 20" N61°W 24 links

Description of corner evidence found:  
No evidence found.

Description of monument and accessories I established to perpetuate the original location of this corner.  
Set a 2 1/2" diameter aluminum pipe monument, 3 feet long, 2 feet in the ground, with  
an aluminum cap stamped; T37N, R12E, 1/4, S26, S27, 1986, S-1665. Established the  
following new bearing trees which are blazed, scribed, painted and tagged.  
White Birch 10" N84°W 48.68 feet  
Red Maple 4" S39°W 12.68 feet  
Spruce 5" S08°W 40.65 feet  
Balsam 5" S74°E 17.99 feet  
Steel sign post Northwest 1.1 feet

Dated at Ludington, Michigan, Wis., this fifth day of January, 1987.  
Signature John C. Schulke Title Land Surveyor Registration No. S-1665  
(County Surveyor, Registered Land Surveyor, or other duly authorized official)  
Office of Register of Deeds, County of Forest, I hereby certify that the within  
instrument was filed in this office for record on the 24th day of February, 1987.  
at 2:00 o'clock P.M.  
Paul Aschenbrenner  
(Register of Deeds)

By Deputy

43712272000

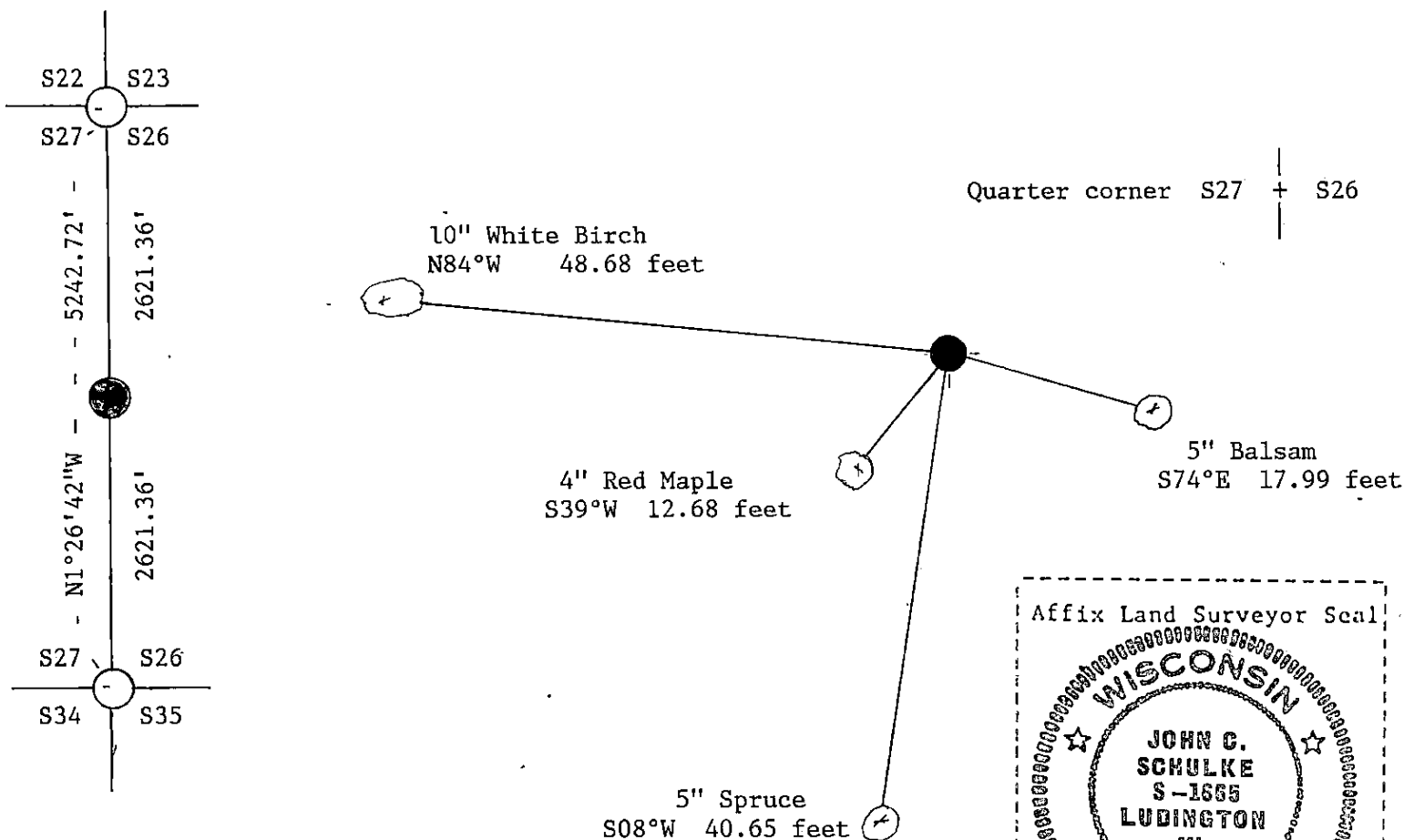
(e) Describe any material discrepancy between the location of the corner as restored or reestablished and the location of that corner as previously restored or reestablished by distance and direction. Show the discrepancy on the plan view drawing under (d), above. Show the distances between the corner as previously restored or reestablished and (1) the corner as restored or reestablished, and (2) to at least 2 of the witness monuments shown on the drawing in (d), above.

None

(f) Was the corner restored through acceptance of (1) an obliterated evidence location, or, (2) a found perpetuated location?

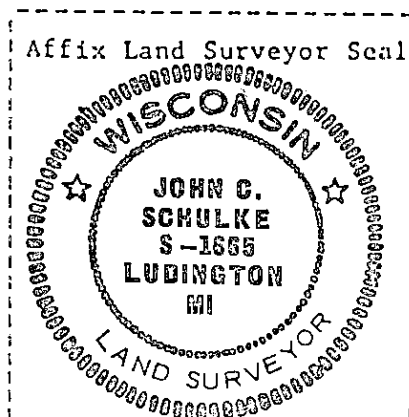
(g&h) Was the corner reestablished through lost corner proportionate methods? If so, show the method, including the directions and distances to other public land survey corners used as evidence or used for proportioning in determining the corner location?

The corner was reestablished through lost corner proportionate methods.



(i) I, John C. Schulke (type or print name) certify that the corner location shown on this record was determined by me or under my direction and control and that this U.S. Public Land Survey Monument Record is correct and complete to the best of my knowledge and belief.

John C. Schulke January 5th, 1987  
Signature Date



Certificate Ready for Filing: Dale O. Starg 2/24/87  
District Ranger Date