

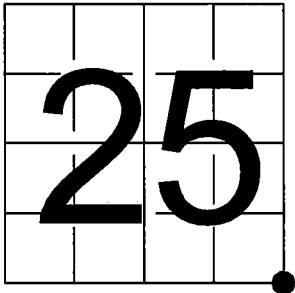
FILED ON:  
12/10/2025 10:02 AM  
CORTNEY BRITTEN CLEEREMAN  
REGISTER OF DEEDS  
FOREST COUNTY WI  
PAGES: 1

U.S. PUBLIC LAND SURVEY  
MONUMENT RECORD

NOTE: This form is intended and designed to fulfill all requirements of Wisconsin Administrative Code, Chapter A-E 7.08 U.S. Public Land Survey Monument Record (3) (a-i)

A-E 7.08(3)(a) Identity of corner:  
Southeast Corner Section 25,  
Township 37 North, Range 15 East  
of the Fourth Principal Meridian,  
Town of Armstrong Creek, Forest County,  
Wisconsin

WISCRS - FOREST COUNTY  
N: 599,834.737 USft (XXX,XXX.XXX)  
E: 925,812.280 USft (XXX,XXX.XXX)  
Datum: NAD83 (2011)  
GNSS Method RTN  
GNSS Control WISCORS VRS



The coordinate value shown has been verified by the average of two or more GPS observations at a markedly different time. Coordinates shown in parenthesis are previously published values.

A-E 7.08(3)(b)

Original Surveyor: Artemas Curtis - March 1857  
Tamarac 8 - S 65° W, 37 Links, Tamarac 8 - N 41° W, 52 Links, Tamarac 9 - N 53° E, 80 Links, Tamarac 7 - S 35° E, 47 Links

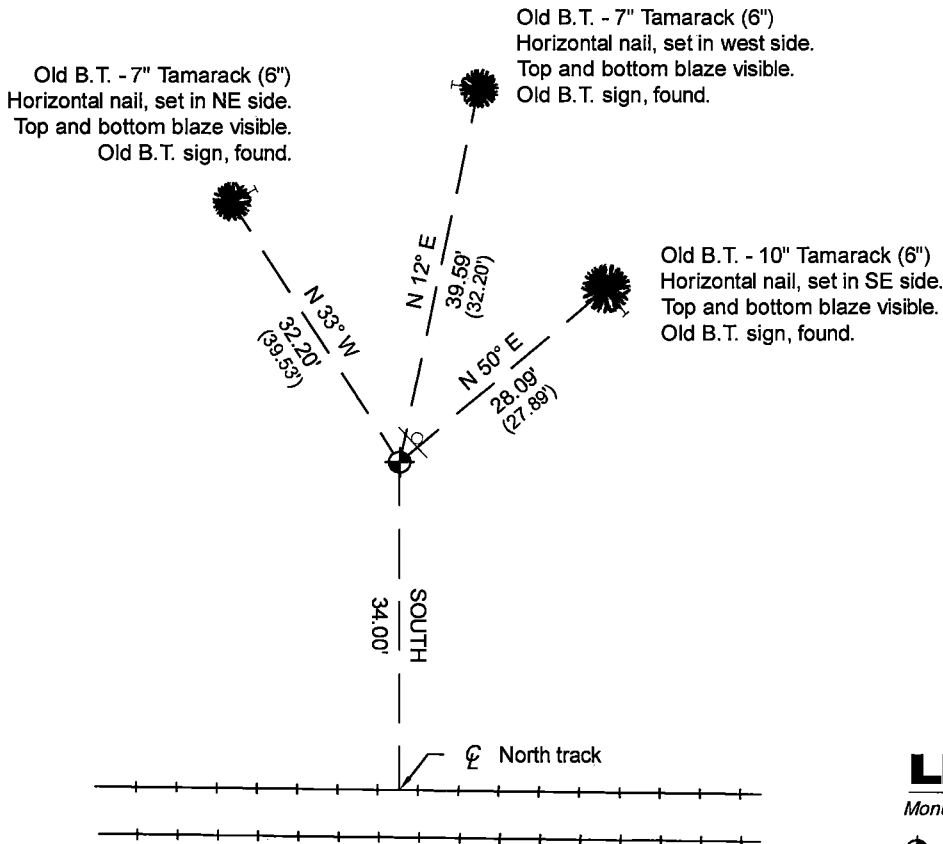
See previous U.S. Public Land Survey Monument Record - V-25- April 25, 1995 - Surveyor 1685 - John R. Garske - THENCE:

- July 30, 1996 - Surveyor 1394 - Norman A. Harrison - indicates this position as "Federal Forest Service aluminum monument" on county record Map #371630-19851010.

August 12, 2025 - I found a 2.4" diameter aluminum pipe monument with a 3.25" diameter aluminum cap stamped to identify the corner location (NOTE: monument stamp is incorrect, referring to Range 16 & 17 East, it should read Range 15 & 16 East). The monument is ±36 feet north of the centerline railroad tracks in a low wet Tamarack marsh. I also found 3 of Garske's bearing trees alive and in good condition.

I established 1 new reference monument as shown below.

A-E 7.08(3)(c)(d) Plan view of corner with references to at least 4 witness monuments.

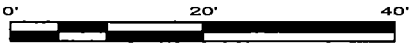


Bearings listed to the nearest second are referenced to the: Wisconsin Coordinate Reference System, Forest County Zone. All other bearings are magnetic.

LEGEND

Monument sizes = outside diameter measurements.

- ⊕ This Corner
- Steel post, found ±1 foot NE of corner
- ⊕ Galvanized nail, set or nail found as shown



A-E 7.08(3)(e) 1857 Surveyor set a post, 1983 Surveyor set a 2" aluminum monument, 1994 Surveyor found the same, 1996 Surveyor found similar. I found 2.4" diameter aluminum pipe monument with a 3.25" diameter aluminum cap stamped to identify the corner location in 2025.

A-E 7.08(3)(f) I accept this monument in good faith as a FOUND PERPETUATED LOCATION of the corner.

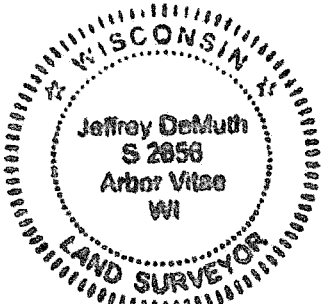
A-E 7.08(3)(g)(h) This corner was previously determined through lost-corner-proportionate methods.

A-E 7.08(3)(i) I, Jeffrey L. DeMuth, Professional Land Surveyor No. S-2656, hereby certify that the corner location on this record was determined by me or under my direction and control, and that this U.S. Public Land Survey Monument Record is correct and complete to the best of my knowledge, and belief.

SIGNATURE

September 16, 2025

DATE



43715250000

43715250000

V25

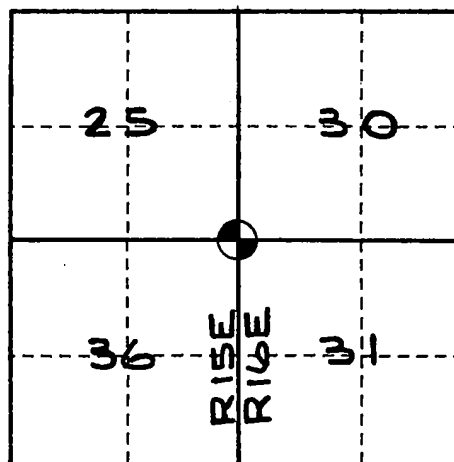
## U. S. PUBLIC LAND SURVEY MONUMENT RECORD

## INSTRUCTIONS:

This record shall show the location of the corner and shall include all of the following nine elements (a through i).

- (a) Identify the corner by reference to the U.S. public land survey system.  
 O = Corner monument restored.

Section corner common to Sections 25 and 36,  
 T37N, R15E, and Sections 30 and 31, T37N,  
 R16E, Forest County, WI.



- (b) Describe any record evidence, monument evidence, occupational evidence, testimonial evidence or any other material evidence you considered, and whether the monument was found or placed.

Original township line survey by Artemas Curtis, October, 1857.

## Original bearing trees:

Tamarack 8 - S65°W, 37 links  
 Tamarack 8 - N41°W, 52 links  
 Tamarack 9 - N53°E, 80 links  
 Tamarack 7 - S35°E - 47 links

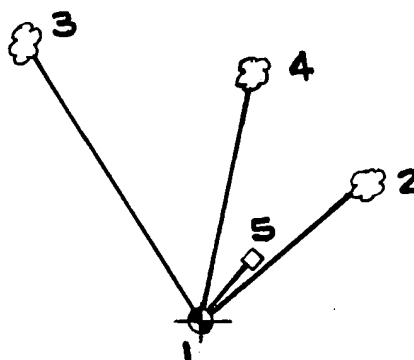
5/12/82 - Milo Stefan, RLS, set a 2" x 120" aluminum monument in bog and made the following bearing trees: Tamarack - N50°E, 27.89 feet; Tamarack, 6" - N33°W, 39.63 feet; Tamarack, 6" - N12°E, 32.20 feet; Steel sign post - Northeast, 0.8 feet.

11/10/94 - John R. Garske, RLS, found monument and bearing trees as described above.

- (c) In the plan view drawing below, provide reference ties to at least 4 witness monuments, or, if the location is within a municipality, to at least 2 witness monuments. (witness monuments shall be made of concrete, natural stone, iron or other equally durable material.)

- (d) Show a plan view drawing depicting the relevant monuments and reference ties which is sufficient in detail to enable accurate relocation of the corner monument if the corner monument is disturbed. Indicate north.

- 1- 2" x 36" aluminum monument with stamped tablet.
- 2- Tamarack, 6" - N50°E, 27.89 feet.
- 3- Tamarack, 6" - N33°W, 39.63 feet.
- 4- Tamarack, 6" - N12°E, 32.20 feet.
- 5- Steel sign post - Northeast, 0.8 feet.



(e) Describe any material discrepancy between the location of the corner as restored or reestablished and the location of that corner as previously restored or reestablished by distance and direction. Show the discrepancy on the plan view drawing under (d), above. Show the distances between the corner as previously restored or reestablished and (1) the corner as restored or reestablished, and (2) to at least 2 of the witness monuments shown on the drawing in (d), above.

None

(f) Was the corner restored through acceptance of (1) an obliterated evidence location, or, (2) a found perpetuated location?

2.

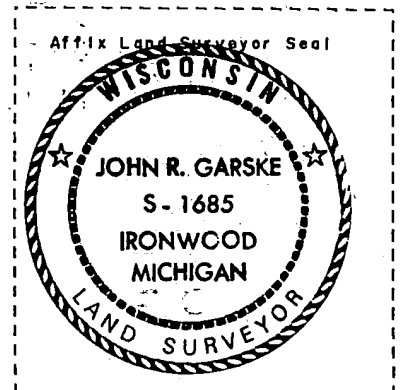
(g & h) Was the corner reestablished through lost corner proportionate methods? If so, show the method, including the directions and distances to other public land survey corners used as evidence or used for proportioning in determining the corner location?

No

REGISTER'S OFFICE  
Forest County, Wis.

Received for record this 10<sup>th</sup> day  
of May, A.D. 1995 at  
8:30 o'clock A.M. and recorded  
in Vol. Case Reiterations  
page 37-154: V-25

Paul Chittka, Deputy  
Register of Deeds



(1) I, John R. Garske, S-1685

(type or print name) certify that the corner location shown on this record was determined by me or under my direction and control and that this U.S. Public Land Survey Monument Record is correct and complete to the best of my knowledge and belief.

John R Garske  
Signature

4/25/95  
Date

CERTIFICATE READY FOR FILING:

Darryl Hucker  
District Ranger