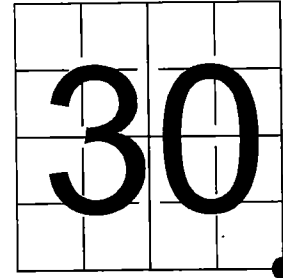


U. S. PUBLIC LAND SURVEY MONUMENT RECORD - ADDENDUM

NOTE: This form is intended and designed to fulfill all requirements of Wisconsin Administrative Code, Chapter A-E 7.08 U.S. Public Land Survey Monument Record (3) (a-i)

A-E 7.08(3)(a) Identity of corner:
Southeast Corner Section 30,
Township 37 North, Range 15 East
of the Fourth Principal Meridian,
Town of Casswell, Forest County, Wisconsin

WISCRS - FOREST COUNTY
N: 600,346.892 USft (XXX,XXX.XXX)
E: 899,236.643 USft (XXX,XXX.XXX)
Datum: NAD83 (2011)
GNSS Method RTK
GNSS Control WISCORS VRS



The coordinate value shown has been verified by the average of two or more GPS observations at a markedly different time. Coordinates shown in parenthesis are previously published values.

A-E 7.08(3)(b)

Original Surveyor: J.L. Nowlin - August 7, 1865 to August 18, 1865
W. Pine 6 - N 28° W 16 Links, W. Pine 7 - N 56° E 38 Links

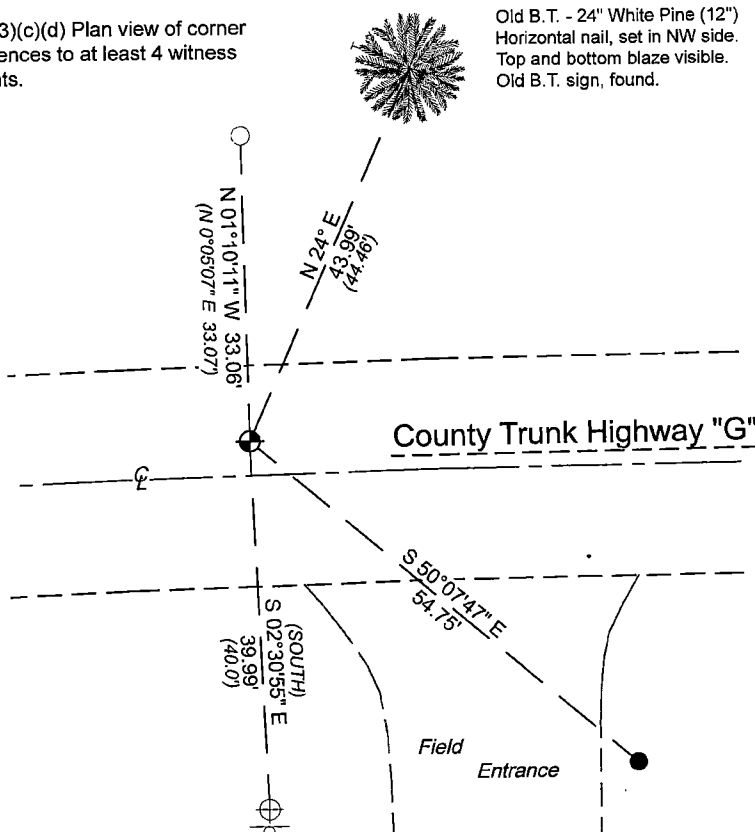
See previous U.S. Public Land Survey Monument Record - V-5 - December 3, 1986 - Surveyor 1651 - Alan D. Harrison - THENCE:

- June 1988, Surveyor 1558 - Milo E. Stefan - indicates this position as "Railroad spike in surface of blacktop" on County file 371529-19890328.
- March 3, 1998 - Surveyor 809 - Michael S. Hess - indicates this position as "R.R. spike marking the section corner found" on Certified Survey Map #161119 as recorded in volume 5 of records on page 109.
- November 16, 2005 - Surveyor 2197 - Michael A. Tremi - indicates this position as "existing railroad spike" on County file 371530-20060306.
- October 26, 2007 - Surveyor 2763 - Brian J. Peot - indicates this position as "Forest County monument" on County file 371530-20071123.
- May 10, 2010 - Surveyor 2763 - Brian J. Peot - indicates this position as "Forest County monument" on County file 371530-20100517.
- October 6, 2016 - Surveyor 809 - Michael S. Hess - indicates this position as "R.R. spike set from ties" on County file 371530-20161010.

February 14, 2024 - I did not find the railroad spike. I found: the witness corner, and White pine witness from previous record. I also found a 1.7" diameter iron pipe from Certified Survey Map #161119.

I set a Berntsen steel Survey Mark Spike using existing witnesses and Certified Survey Map #161119. The monument is ±4' north of the County Trunk Highway G centerline.
I established 2 new reference monuments as shown below.

A-E 7.08(3)(c)(d) Plan view of corner with references to at least 4 witness monuments.

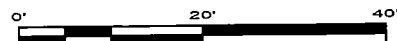


Bearings listed to the nearest second are referenced to the: Wisconsin County Coordinate Reference System, FOREST County Zone. All other bearings are magnetic.

LEGEND

Monument sizes = outside diameter measurements.

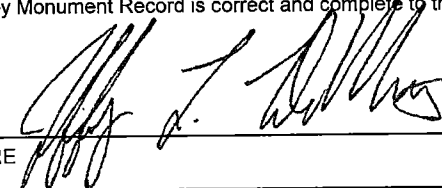
- ⊕ This Corner
- Steel sign post, found ±41 feet south of corner
- 0.75" diameter X 18" long iron rod, weighing 1.5 lbs. per lineal foot, set
- ⊕ Aluminum witness monument, 3.25 diameter aluminum cap, found
- 1.7" diameter iron pipe, found

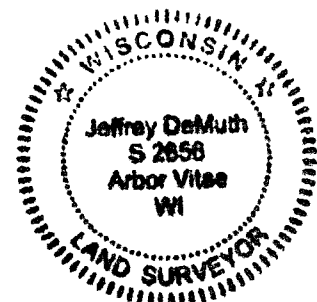


A-E 7.08(3)(e) 1986 Surveyor found a railroad spike, subsequent surveyors found the same, I reestablished the corner in 2024.

A-E 7.08(3)(f) I accept this monument in good faith as a PERPETUATED LOCATION of the corner.
A-E 7.08(3)(g)(h) This corner was previously determined through lost-corner-proportionate methods.

A-E 7.08(3)(i) I, Jeffrey L. DeMuth, Professional Land Surveyor No. S-2656, hereby certify that the corner location on this record was determined by me or under my direction and control, and that this U.S. Public Land Survey Monument Record is correct and complete to the best of my knowledge, and belief.

SIGNATURE  DATE March 15, 2024



43715300000

43715300000

V5

CERTIFIED LAND CORNER RESTORATION

Index No. **V-55**

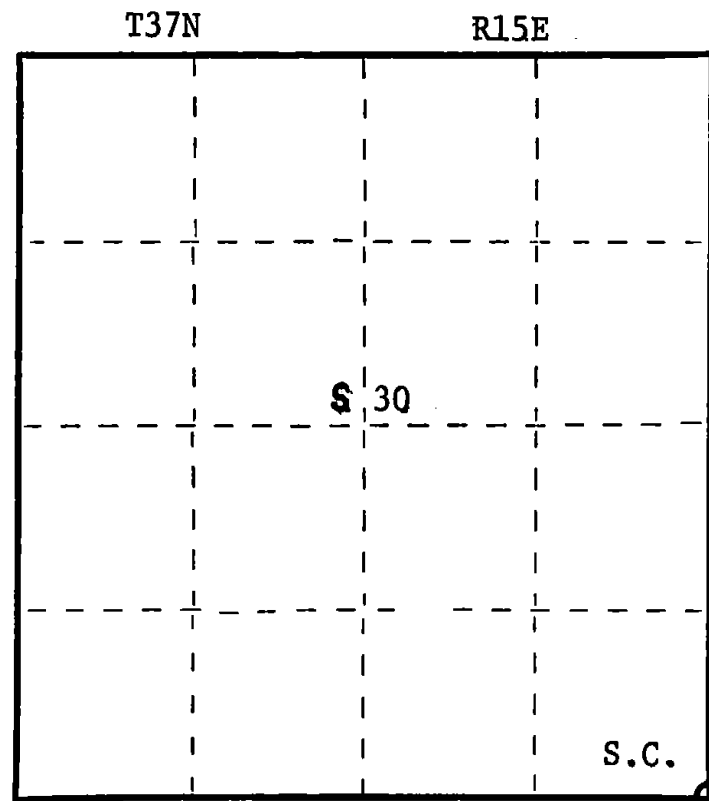
State of Wisconsin }
County of Forest } ss.

I Daniel K. Pleoger, do hereby
certify that on the 15 day
of July, 19 81, I
Established the section
corner of sections 29-30-31-32
Township 37, North, Range
15 East, Fourth Principal Meridian,
as described hereon; and that from this evidence
I established a new monument and accessories
as described hereon to perpetuate the original
location of this corner.

Resident witnesses:



FORM 985 M. C. MILLER CO., MILWAUKEE



○ = Corner monument restored.

History of original corner establishment:

Original corner established by James L. Nowlin, Gov. Deputy Surveyor in 1865 from
which white pine 6" bears N28W 16 lks and white pine 7" N56E 38 lks.

Description of corner evidence found:

Re-established section corner by proportional distance run from 1/4 corner between
sections 31 & 32 to S 1/16 corner between Sections 31 & 32 which was established by
Owen N. Smith registered land surveyor in 1952 for a distance of 1324.754 ft. at
bearing N6-39-01W, doubled distance and on line set section corner 29-30-31-32.

Description of monument and accessories I established to perpetuate the original location of this corner.

Set a railroad spike 2.0ft north of center line of CTH "G" for true corner.
Set a 2½" aluminum A-1 Federal monument with alloy cap for witness corner stamped:

Monument projects 12" above ground
Marked NBT and B.O. to true corner
White pine 11" N24E 44.46 ft - scribed S.C. - B.T.
Power pole - spike west side - S19W 31.42 ft.

T37N R 15E
S.C. 30 29
31 32
S1537 - 1981
N. 40 ft. to Cor

Dated at Rhinelander, Wis., this 17 day of September, 19 81

Signature Daniel K. Pleoger Title Registered Land Surveyor Registration No. 1537
(County Surveyor, Registered Land Surveyor, or other duly authorized official)

Office of Register of Deeds, County of Forest, I hereby certify that the within
instrument was filed in this office for record on the 25th day of September, 19 81
at 2:00 o'clock P. M.

Eugene J. Statynsky
(Register of Deeds)

DOCUMENT NO. **120539**

By Deputy

4371530000

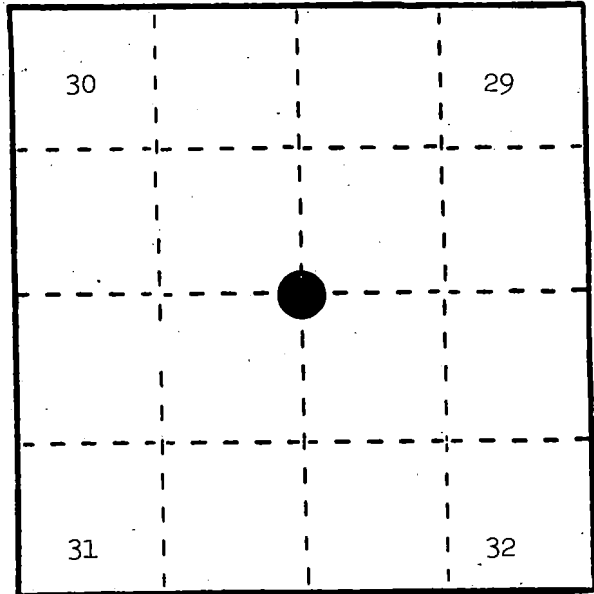
U. S. PUBLIC LAND SURVEY MONUMENT RECORD

INSTRUCTIONS: This record shall show the location of the corner and shall include all of the following nine elements (a through i).

- (a) Identify the corner by reference to the U.S. public land survey system.

○ = Corner monument restored.

Section corner to Sections 29, 30, 31, and 32, T.37N., R.15E.



REGISTER'S OFFICE
Forest County, Wis.

Received for record this 3rd day
of December A.D., 1986, at
1:30 o'clock P.M. and recorded
in Vol. CORNER RESTORATIONS

page V-5

Paul Achenbrenner
Register of Deeds

- (b) Describe any record evidence, monument evidence, occupational evidence, testimonial evidence or any other material evidence you considered, and whether the monument was found or placed.

In 1865, J. L. Nowlin set wood post with the following BTs: White Pine, 7", N.56°E., 38 links; White Pine, 6", N.28°W., 16 links.

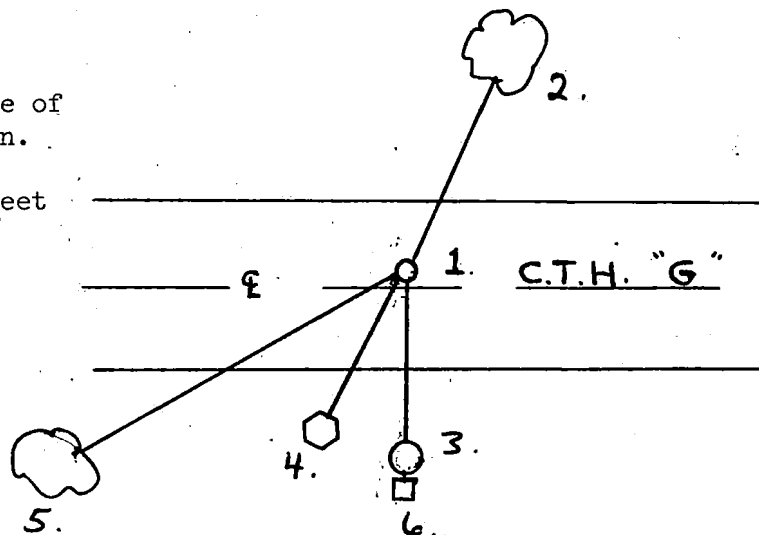
In 1981, Daniel Pleoger reestablished corner by proportional distance run from quarter corner between Sections 31 and 32 to S 1/16 corner between Sections 31 and 32, which was established by Owen N. Smith, R.L.S., in 1952 for a distance of 1324.754 feet at bearing of N6°-39'-01"W, doubled distance and on line set section corner. He placed a railroad spike 2.0 feet north of centerline of County Highway "G" and made the following BTs: White Pine, 11", N.24°E., 44.46 feet; Power Pole, S.19°W., 31.42 feet; Witness Corner (Forest County Cap), South, 40.00 feet.

In 1985, Milo Stefan found railroad spike as set by Pleoger. Also found White Pine BT and witness corner, but power pole had been replaced. Accepted this location and added new BTs.

- (c) In the plan view drawing below, provide reference ties to at least 4 witness monuments, or, if the location is within a municipality, to at least 2 witness monuments. (Witness monuments shall be made of concrete, natural stone, iron or other equally durable material.) Describe witness monuments.

- (d) Show a plan view drawing depicting the relevant monuments and reference ties which is sufficient in detail to enable accurate relocation of the corner monument if the corner monument is disturbed. Indicate north.

- Railroad spike 2.0 feet north of centerline of County Hwy. "G" marking the corner location.
- White Pine, 12", N.24°E., 44.46 feet
- Witness Corner (County Cap), South, 40.0 feet
- Power Pole #3715-23W1, S.19°W., 31.42 feet
- White Pine, 11", S.48°W., 93.5 feet
- Steel Sign Post, South, 41.0 feet



V-5

43715300000

V-5

(e) Describe any material discrepancy between the location of the corner as restored or reestablished and the location of that corner as previously restored or reestablished by distance and direction. Show the discrepancy on the plan view drawing under (d), above. Show the distances between the corner as previously restored or reestablished and (1) the corner as restored or reestablished, and (2) to at least 2 of the witness monuments shown on the drawing in (d), above.

(f) Was the corner restored through acceptance of (1) an obliterated evidence location, or, (2) a found perpetuated location?

(2) a found perpetuated location.

(g&h) Was the corner reestablished through lost corner proportionate methods? If so, show the method, including the directions and distances to other public land survey corners used as evidence or used for proportioning in determining the corner location?

Yes, by Daniel Pleoger as per Document No. 120539.

(1) I, Alan D. Harrison
(type or print name) certify that the corner location shown
on this record was determined by me or under my direction and
control and that this U.S. Public Land Survey Monument Record is
correct and complete to the best of my knowledge and belief.

Signature

Date

12-03-86

