

CORTNEY BRITTEN CLEEREMAN
REGISTER OF DEEDS
FOREST COUNTY WI
PAGES: 1

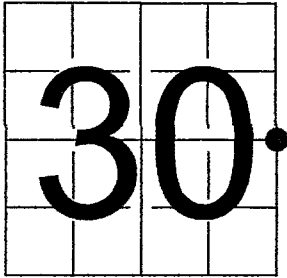
INDEX#: T5

U. S. PUBLIC LAND SURVEY MONUMENT RECORD

NOTE: This form is intended and designed to fulfill all requirements of Wisconsin Administrative Code, Chapter A-E 7.08 U.S. Public Land Survey Monument Record (3) (a-i)

A-E 7.08(3)(a) Identity of corner:
East 1/4 Corner Section 30,
Township 37 North, Range 15 East
of the Fourth Principal Meridian,
Town of Casswell, Forest County, Wisconsin

WISCRS - FOREST COUNTY
N: 602,945.601 USft (XXX,XXX.XXX)
E: 899 185.809 USft (XXX,XXX.XXX)
Datum: NAD83 (2011)
GNSS Method RTK
GNSS Control WISCRS VRS



The coordinate value shown has been verified by the average of two or more GPS observations at a markedly different time. Coordinates shown in parenthesis are previously published values.

A-E 7.08(3)(b)

Original Surveyor: J.L. Nowlin - August 7, 1865 to August 18, 1865
Aspen 7 - S 32° E 17 Links, Aspen 6 - N 11° E 21 Links

See previous U.S.Public Land Survey Monument Record - T-5 - June 6, 1988 - Surveyor 1558 - Milo E. Stefan - THENCE:

- November 16, 2005 - Surveyor 2197 - Michael A. Tremi - indicates this position as "existing 2" aluminum monument" on County file 371530-20060306.
- October 26, 2007 - Surveyor 2763 - Brian J. Peot - indicates this position as "Forest County monument" on County file 371530-20071123.
- May 10, 2010 - Surveyor 2763 - Brian J. Peot - indicates this position as "Forest County monument" on County file 371530-20100517.
- October 6, 2016 - Surveyor 809 - Michael S. Hess - indicates this position as "Forest County monument" on County file 371530-20161010.

February 14, 2024 - I found a 2.5" diameter aluminum pipe with a 3.25" diameter aluminum cap stamped to identify the corner location. I also found 2 of Stefan's bearing trees and his steel sign post..

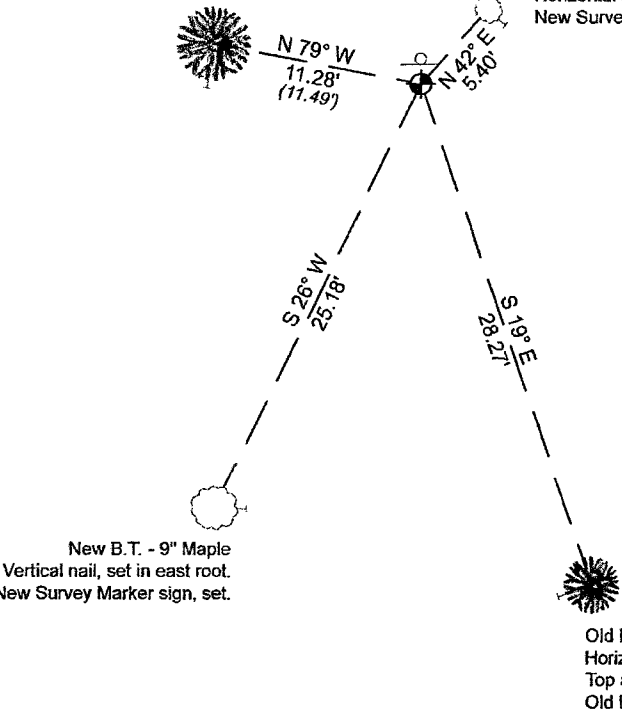
I established 2 new reference monuments as shown below.

A-E 7.08(3)(c)(d) Plan view of corner with references to at least 4 witness monuments.

Old B.T. - 15" White Pine (6")
Vertical nail, set in south root.
Top and bottom blaze visible.
Old B.T. sign, found.

New B.T. - 6" Maple
Horizontal nail, set in SE side.
New Survey Marker sign, set.

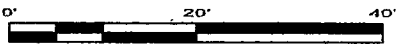
Bearings listed to the nearest second
are referenced to the:
Wisconsin County Coordinate
Reference System,
FOREST County Zone.
All other bearings are magnetic.



LEGEND

Monument sizes = outside diameter measurements.

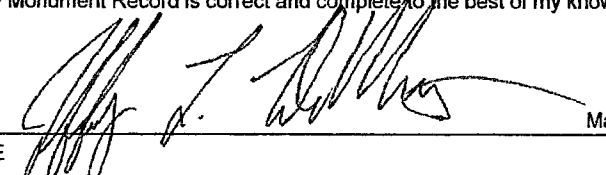
- ⊕ This Corner
- Steel sign post, found ±1.4 feet north of corner

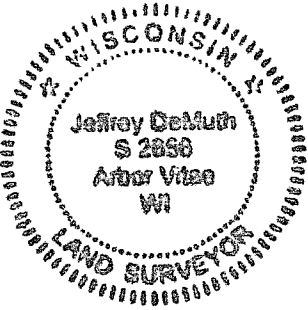


A-E 7.08(3)(e) 1988 Surveyor found a Forest County aluminum monument, subsequent surveyors found the same, as did I in 2024.

A-E 7.08(3)(f) I accept this monument in good faith as a FOUND PERPETUATED LOCATION of the corner.
A-E 7.08(3)(g)(h) This corner was previously determined through lost-corner-proportionate methods.

A-E 7.08(3)(i) I, Jeffrey L. DeMuth, Professional Land Surveyor No. S-2656, hereby certify that the corner location on this record was determined by me or under my direction and control, and that this U.S. Public Land Survey Monument Record is correct and complete to the best of my knowledge, and belief.


SIGNATURE March 15, 2024
DATE



43715302000

43715302000

T5

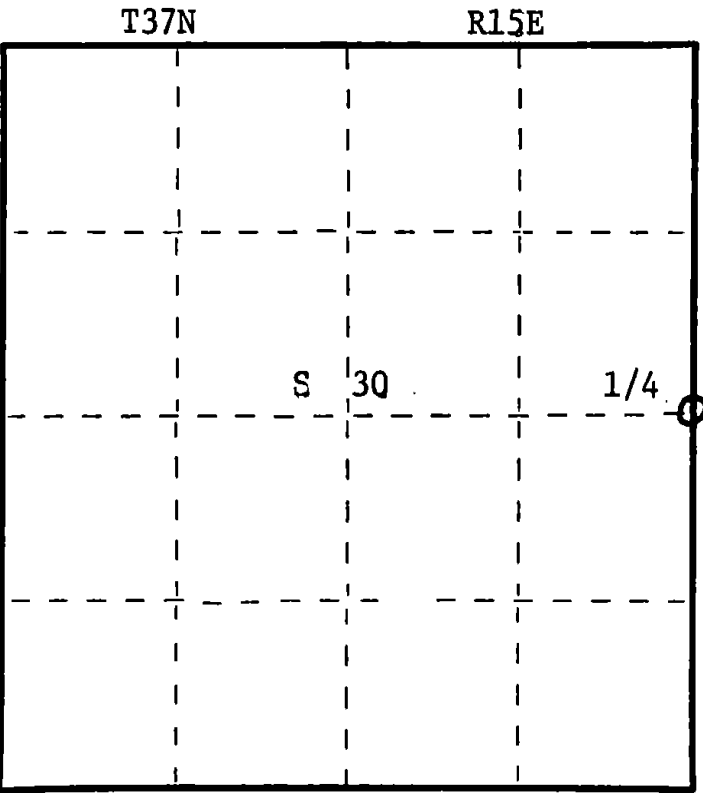
CERTIFIED LAND CORNER RESTORATION

Index No. **T-55**

State of Wisconsin }
County of Forest } ss.

I Daniel K. Pleoger, do hereby
certify that on the 20 day
of July, 1981, I found
evidence of the Quarter
corner of Sections 29 & 30
Township 37, North, Range
15 East, Fourth Principal Meridian,
as described hereon; and that from this evidence
I established a new monument and accessories
as described hereon to perpetuate the original
location of this corner.

Resident witnesses



History of original corner establishment:

Original corner established by James L. Nowlin, Gov. Deputy Surveyor in 1865, from
which aspen 7" bears S32E 17 lks and aspen 6" bears N11E 21 lks.

Description of corner evidence found:

Recovered an old 1"x30" iron pipe at the intersection of old fence running north-south
and east. Also an old forest service location tag tacked to fence corner.

Description of monument and accessories I established to perpetuate the original location of this corner.

Replaced iron pipe with a 2 1/2" aluminum A-1 Federal Monument with alloy cap stamped:

Monument projects 18" above ground

Marked NBTs

White pine 5" N79W 11.36 ft.

Maple 5" N25W 12.98 ft.

Maple 5" N22E 17.86 ft.

T37N R15E

1/4 30 29

S1537 - 1981

Dated at Rhineland, Wis., this 21 day of September, 1981

Signature Daniel K. Pleoger Title Registered Land Surveyor Registration No. 1537
(County Surveyor, Registered Land Surveyor, or other duly authorized official)

Office of Register of Deeds, County of Forest, I hereby certify that the within
instrument was filed in this office for record on the 25th day of September, 1981
at 2:00 o'clock P. M.

Eugene Stutzman
(Register of Deeds)
By _____ Deputy

DOCUMENT NO. **120535**

FORM 985 M. C. MILLER CO., MILWAUKEE

43719302000

U. S. PUBLIC LAND SURVEY MONUMENT RECORD.

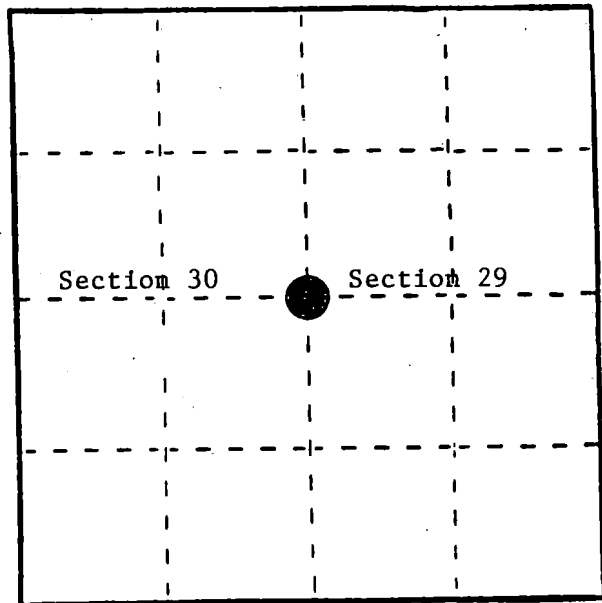
INSTRUCTIONS: This record shall show the location of the corner and shall include all of the following nine elements (a through i).

- (a) Identify the corner by reference to the U.S. public land survey system.

○ = Corner monument restored.

Quarter Corner to Sections 29 and 30,
T.37N.R.15E.

REGISTER'S OFFICE }
Forest County, Wis. }
Received for record this 30th day
of June A. D., 1988 at
2:40 o'clock P. M. and
recorded in Vol. CORNER RESTORATIONS
on page 5 of records
Jail Aschenbrenner
REGISTER



- (b) Describe any record evidence, monument evidence, occupational evidence, testimonial evidence or any other material evidence you considered, and whether the monument was found or placed.

1865, James Nowlin set 1/4 section post with the following BTs:

6" Aspen, N11°E, 21 links

7" Aspen, S32°E, 17 links

7/20/81 Daniel K. Pleager recovered 1" x 30" iron pipe at fence corner with old location poster at fence corner. Made 3 BTs:

5" White Pine, N79°W, 11.36 Feet

5" Maple, N25°W, 12.98 Feet

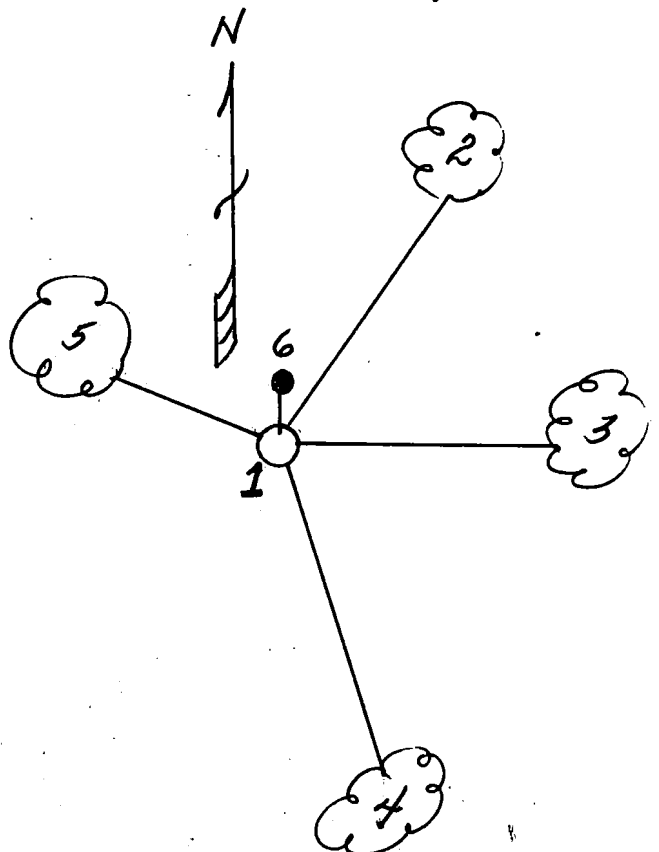
5" Maple, N22°E, 17.86 Feet

6/14/88 Milo E. Stefan found Forest County Monument with Northwest Maple down. Made two new BTs, placed sign post and painted up corner to Forest Service standard.

- (c) In the plan view drawing below, provide reference ties to at least 4 witness monuments, or, if the location is within a municipality, to at least 2 witness monuments. (Witness monuments shall be made of concrete, natural stone, iron or other equally durable material.) Describe witness monuments.

- (d) Show a plan view drawing depicting the relevant monuments and reference ties which is sufficient in detail to enable accurate relocation of the corner monument if the corner monument is disturbed. Indicate north.

1. Forest County Aluminum Monument.
2. 5" Red Maple, N23°E, 18.08 Feet.
3. 11" White Spruce, East, 32.22 Feet.
4. 3" White Pine, S19°E, 28.27 Feet.
5. 6" White Pine, N79°W, 11.49 Feet.
6. Steel sign post, North, 1.4 Feet.



- (e) Describe any material discrepancy between the location of the corner as restored or reestablished and the location of that corner as previously restored or reestablished by distance and direction. Show the discrepancy on the plan view drawing under (d), above. Show the distances between the corner as previously restored or reestablished and (1) the corner as restored or reestablished, and (2) to at least 2 of the witness monuments shown on the drawing in (d), above.

- (f) Was the corner restored through acceptance of (1) an obliterated evidence location, or, (2) a found perpetuated location?

(2) A found perpetuated location.

- (g) Was the corner reestablished through lost corner proportionate methods? If so, show the method, including the directions and distances to other public land survey corners used as evidence or used for proportioning in determining the corner location?

No.

(1) Milo E. Stefan

(type or print name) certify that the corner location shown on this record was determined by me or under my direction and control and that this U.S. Public Land Survey Monument Record is correct and complete to the best of my knowledge and belief.

Milo E. Stefan
Signature

6/26/88
Date

Certificate ready for filing: _____

District Ranger

