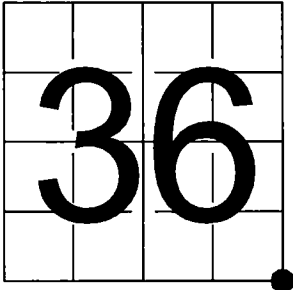


U.S. PUBLIC LAND SURVEY
MONUMENT RECORD

NOTE: This form is intended and designed to fulfill all requirements of Wisconsin Administrative Code, Chapter A-E 7.08 U.S. Public Land Survey Monument Record (3) (a-i)

A-E 7.08(3)(a) Identity of corner:
Southeast Corner Section 36,
Township 37 North, Range 15 East
of the Fourth Principal Meridian,
Town of Armstrong Creek, Forest County,
Wisconsin

WISCRS - FOREST COUNTY
N: 594,572.795 USft (XXX,XXX.XXX)
E: 925,804.483 USft (XXX,XXX.XXX)
Datum: NAD83 (2011)
GNSS Method RTN
GNSS Control WISCORS VRS



The coordinate value shown has been verified by the average of two or more GPS observations at a markedly different time. Coordinates shown in parenthesis are previously published values.

A-E 7.08(3)(b)

Original Surveyor: Artemas Curtis - March 1857
Sugar 6 - N 69° W, 55 Links, Sugar 20 - N 68° E, 34 Links, Sugar 18 - S 56° E, 57 Links, Sugar 16 - S 51° W, 62 Links

See previous Certified Land Corner Restoration - A 25 -December 22, 1975 - Surveyor 498 - Philip T. Hansen - THENCE:

- 1995 - Surveyor 1685 - John R. Garske - indicates this position as "found 2 1/2" aluminum capped pipe" on county record Map #371536-19950000.
- December 6, 2024 - Surveyor 3032 - Michael J. Hoffman - indicates this position as "found aluminum capped monument" on county record Map #371631-20241206.

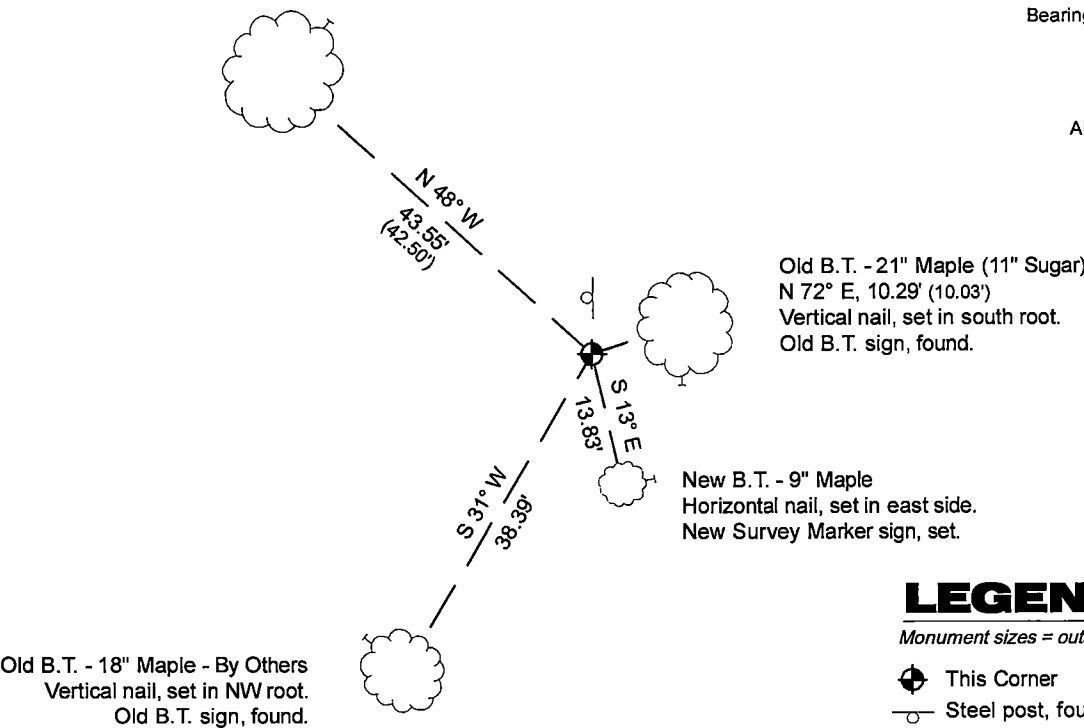
August 19, 2025 - I found a 2.4" diameter aluminum pipe monument with a 3.25" diameter aluminum cap stamped to identify the corner location. The monument is ±500 feet west of a gas line, in open hardwoods, and extends ±12" above grade. I also found 2 of Hansen's bearing trees alive and in good condition, and 1 bearing tree by others.

I established 1 new reference monument as shown below.

A-E 7.08(3)(c)(d) Plan view of corner with references to at least 4 witness monuments.

Old B.T. - 25" Maple (13" Sugar)
Vertical nail, set in NE root.
New Survey Marker sign, set.

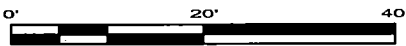
Bearings listed to the nearest second
are referenced to the:
Wisconsin Coordinate
Reference System,
Forest County Zone.
All other bearings are magnetic.



LEGEND

Monument sizes = outside diameter measurements.

- ⊕ This Corner
- Steel post, found ±2 feet north of corner
- Galvanized nail, set or nail found as shown



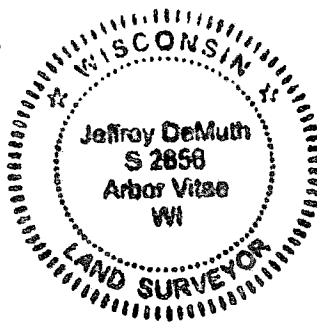
A-E 7.08(3)(e) 1857 Surveyor set a post, 1975 Surveyor found a cedar post and set a 2 1/2" aluminum monument, 1995 and 2024 Surveyors found the same. I found 2.4" diameter aluminum pipe monument with a 3.25" diameter aluminum cap stamped to identify the corner location in 2025.

A-E 7.08(3)(f) I accept this monument in good faith as a FOUND PERPETUATED LOCATION of the corner.

A-E 7.08(3)(g)(h) This corner was not determined through lost-corner-proportionate methods.

A-E 7.08(3)(i) I, Jeffrey L. DeMuth, Professional Land Surveyor No. S-2656, hereby certify that the corner location on this record was determined by me or under my direction and control, and that this U.S. Public Land Survey Monument Record is correct and complete to the best of my knowledge, and belief.

SIGNATURE _____ DATE September 16, 2025



43715360000

CERTIFIED LAND CORNER RESTORATION

Index No.

A 25

State of Wisconsin
County of Forest } ss.

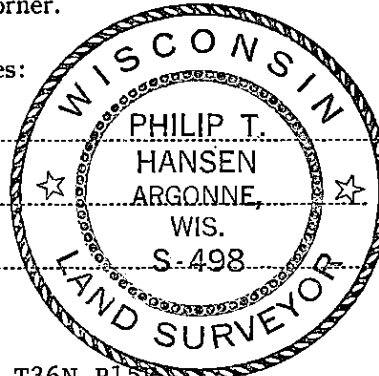
I Philip T. Hansen, do hereby
certify that on the 16th day
of December, 1975, I found
evidence of the Section
corner of S36, 31, 6, and 1
Township 37 and 36
15 & 16 East, Fourth Principal Meridian,
as described hereon; and that from this evidence
I established a new monument and accessories
as described hereon to perpetuate the original
location of this corner.

Resident witnesses:

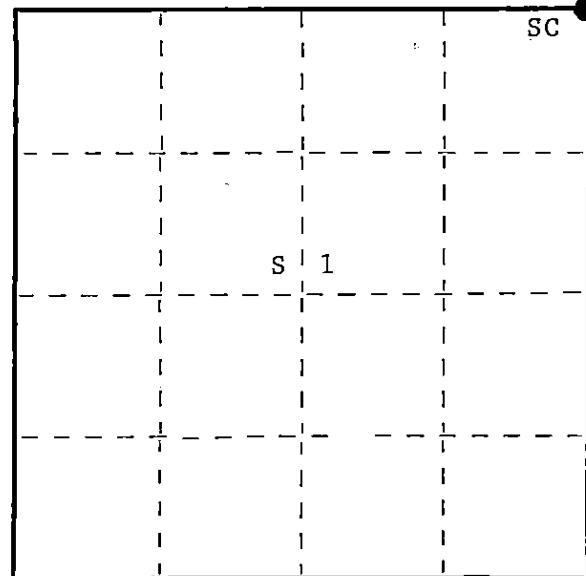
Glen Barker

Jim Claflin

Tom Jewell



T36N R15E



○ = Corner monument restored.

History of original corner establishment: Original corner established by A. Cortiss, Deputy Surveyor, in 1857, from which sugar 16" bears S51°W 62 links, sugar 6" bears N69°W 55 links, sugar 20" bears N68°E 34 links, and sugar 18" bears S56°E 57 links.

No records of subsequent surveys. Ray Leigh, Consolidated Forester in 1940, found corner intact and in place in 1949, during mapping of this section. Corner recovered in place in 1959 during remapping.

Description of corner evidence found: Recovered 4" squared cedar post with rock cairn built around base. Post in poor condition.

Description of monument and accessories I established to perpetuate the original location of this corner.

Replaced 4" squared cedar post with 2½" Berntsen A-1 Federal Monument, aluminum, with magnet installed in cap and base; Cap stamped -

Pipe projects 18" above ground.

NBT's - Sugar 13" N48°W 66.4 links, scribed SC BT.
Sugar 11½" N4°E 44.2 links, scribed SC BT.
Sugar 11" N72°E 15.2 links, scribed SC BT.

		S498			
R	T37N			R	
15	36	31		16	
E	1	6		E	
		T36N			
		1975			

Pipe and BT's painted blue.

Dated at Argonne, Wis., this 22nd day of December, 1975.

Signature Philip T. Hansen Title Registered Land Surveyor Registration No. S-498
(County Surveyor, Registered Land Surveyor, or other duly authorized official)

Office of Register of Deeds, County of Forest, I hereby certify that the within instrument was filed in this office for record on the 5th day of January, 1976 at 2:45 o'clock P. M.

EUGENE STATEZNY

(Register of Deeds)

DOCUMENT NUMBER --- 108490

By Eileen Schmidt Deputy