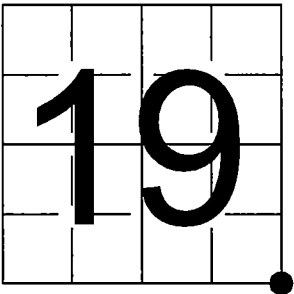


U.S. PUBLIC LAND SURVEY MONUMENT RECORD

NOTE: This form is intended and designed to fulfill all requirements of Wisconsin Administrative Code, Chapter A-E 7.08 U.S. Public Land Survey Monument Record (3) (a-i)

A-E 7.08(3)(a) Identity of corner:
Southeast Corner Section 19,
Township 37 North, Range 16 East
of the Fourth Principal Meridian,
Town of Armstrong Creek, Forest County,
Wisconsin

WISCRS - FOREST COUNTY
N: 605,034.653 USft (XXX,XXX.XXX)
E: 931,789.535 USft (XXX,XXX.XXX)
Datum: NAD83 (2011)
GNSS Method RTK
GNSS Control WISCRS VRS



The coordinate value shown has been verified by the average of two or more GPS observations at a markedly different time. Coordinates shown in parenthesis are previously published values.

A-E 7.08(3)(b)

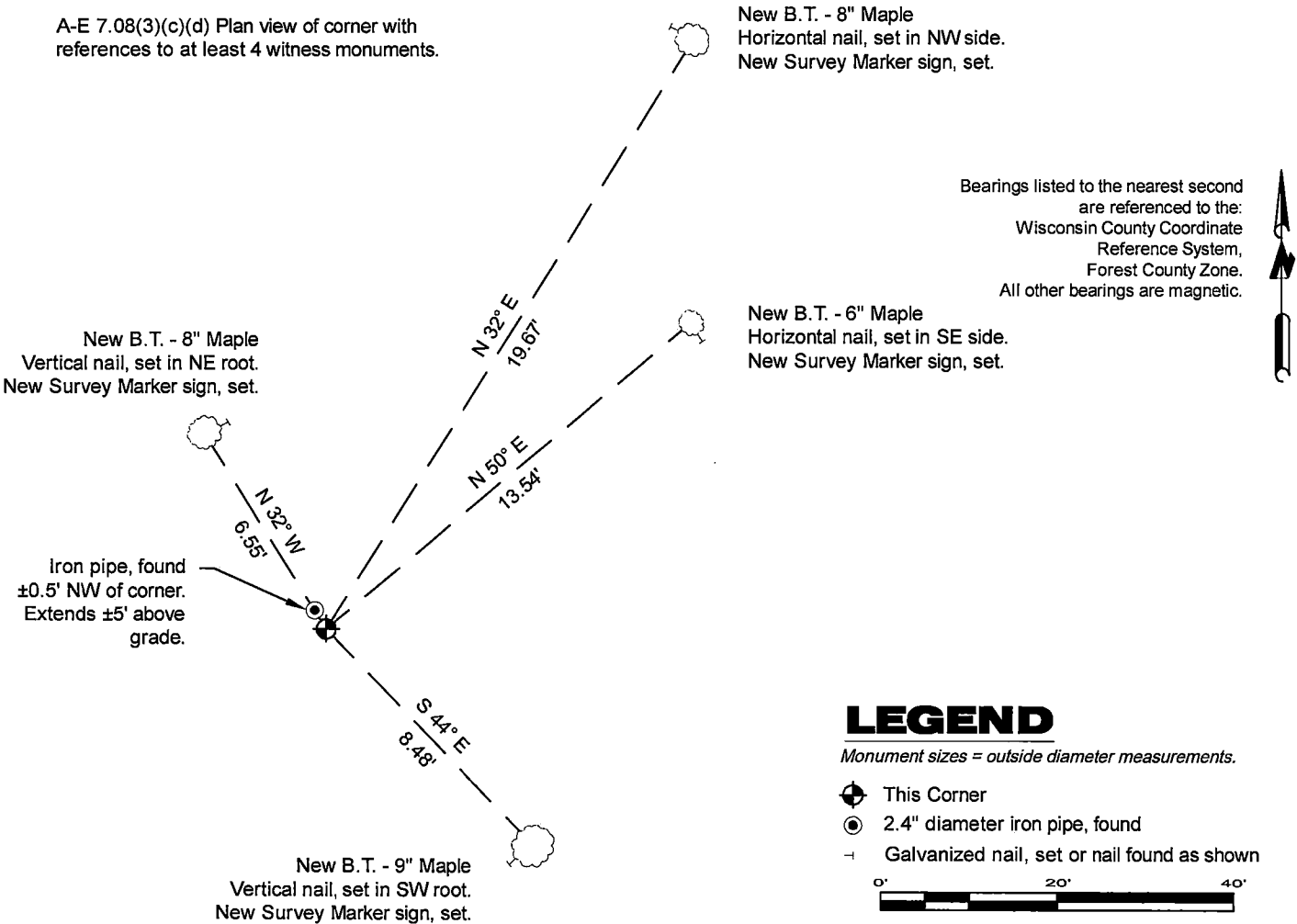
Original Surveyor: James McBride - July 11, 1859 to July 16, 1859
Elm 10 - N 56° W, 57 Links, Fir 10 - N 41° E, 70 Links, Elm 12 - S 60° E, 18 Links, Fir 8 - S 15° W, 29 Links

See previous Certified Land Corner Restoration - R-5 - August 8, 1986 - Surveyor 1394 - Norman A. Harrison - THENCE:

- January 21, 2016 - Surveyor 3065 - Casey J. Pries - indicates this position as "Forest County aluminum monument" on county record Map #371619-20160208.
- November 15, 2016 - Surveyor 3065 - Casey J. Pries - indicates this position as "Forest County aluminum monument" on county record Map #371630-20161130.

March 10, 2025 - I found a 2.4" diameter aluminum pipe monument with a 3.25" diameter aluminum cap, stamped to identify the corner location. The monument is ±17 feet north of an east-west woods road, extends ±15" above grade, and is leaning east (±4" out of plumb). I measured the west side base of the monument.
I did not find any of Harrison's bearing trees.
I established 4 new reference monuments as shown below.

A-E 7.08(3)(c)(d) Plan view of corner with references to at least 4 witness monuments.



LEGEND

Monument sizes = outside diameter measurements.

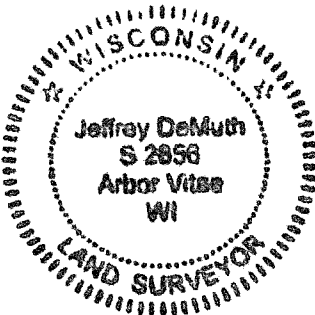
- ⊕ This Corner
- ⊙ 2.4" diameter iron pipe, found
- Galvanized nail, set or nail found as shown

A-E 7.08(3)(e) 1859 Surveyor set a post, 1986 Surveyor set a Forest County aluminum monument, I found the same in 2025.

A-E 7.08(3)(f) I accept this monument in good faith as a FOUND PERPETUATED LOCATION of the corner.

A-E 7.08(3)(g)(h) This corner was not determined through lost-corner-proportionate methods.

A-E 7.08(3)(i) I, Jeffrey L. DeMuth, Professional Land Surveyor No. S-2656, hereby certify that the corner location on this record was determined by me or under my direction and control, and that this U.S. Public Land Survey Monument Record is correct and complete to the best of my knowledge, and belief.



SIGNATURE

Jeffrey L. DeMuth

March 14, 2025

DATE

43716190000

43716190000

R5

CERTIFIED LAND CORNER RESTORATION

Index No. R-5

State of Wisconsin }
County of Forest } ss.

I, Norman A. Harrison, do hereby
certify that on the 8th day
of August, 1986, I found
evidence of the northeast corner
corner of Section 30
Township 37, North, Range
16, Fourth Principal Meridian,
as described hereon; and that from this evidence
I established a new monument and accessories
as described hereon to perpetuate the original
location of this corner.

Resident witnesses:

History of original corner establishment: Subdivision of Township 37 North, Range 16 East,
4th Principal meridian by James McBride, Deputy Surveyor.
Commenced July 11, 1859 - Finished July 16, 1859

80.00 Set post ~~corner~~ to Sections 19, 20, 29 and 30
Elm 10 N 56 W 57
Fir 10 N 41 E 70
Elm 12 S 60 E 18
Fir 8 S 15 W 29

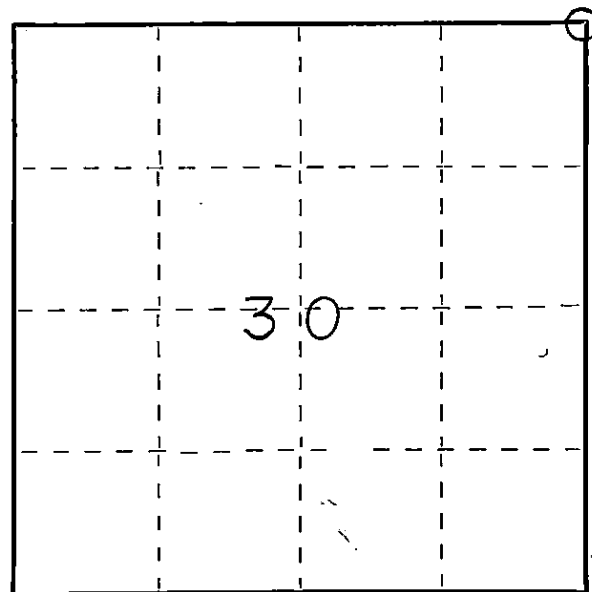
Description of corner evidence found: No evidence of original corner found.
Found old 4 way fence corner at edge of swamp, fence corners at the sixteen corners
on North line of Section and road intersection at north quarter corner of Section.
Accepted old fence corner as best evidence of perpetuation of original corner location.
Sketch on back side of this sheet.

Description of monument and accessories I established to perpetuate the original location of this corner
Set Forest County Aluminum monument at corner.

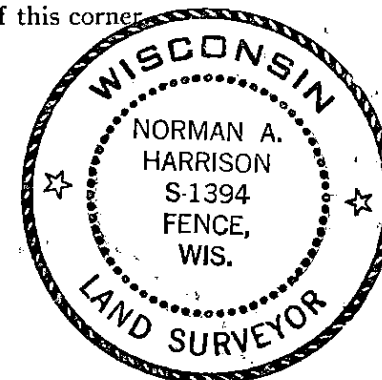
New bearing trees

soft maple	9"	N 55° 56' W	28.6 feet
hard maple	7"	N 66° 32' E	70.0 feet
soft maple	8"	S 87° 34' W	41.0 feet

bearings referenced to Magnetic North



○ = Corner monument restored.



Dated at Fence, Wis., this 18th day of December, 1986.

Signature Norman A. Harrison Title Surveyor Registration No. 1394
(County Surveyor, Registered Land Surveyor, or other duly authorized official)

Office of Register of Deeds, County of Forest, I hereby certify that the within
instrument was filed in this office for record on the 18th day of December, 1986
at 11:00 o'clock A. M.

Paul Aschenbrenner
(Register of Deeds)

By _____ Deputy

DOCUMENT NUMBER
131742

FORM 985 R. C. MILLER CO., MILWAUKEE

43716190000

